

THESIS REPORT ON

FIVE STAR HOTEL
GREATER NOIDA, UTTAR PRADESH

A Thesis submitted
in partial fulfilment of the
requirements
for the degree of

BACHELOR OF ARCHITECTURE

BY
SNEHA GUPTA
1130101061

GUIDED BY-
AR DIXIT SIR
AR ARPIT SIR

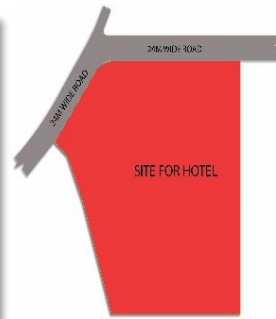
SESSION
2019-2020

TO THE
SCHOOL OF ARCHITECTURE AND
PLANNING

BABU BANARASI DAS UNIVERSITY
LUCKNOW



INTRODUCTION



Five star hotels, are meeting-places for the rich and powerful-places. The hotel industry has its roots in the past in almost over country of the world.

Hotel provides a service to the customer whose requirements are clean, quiet and comfortable stays. The emphasis lies on **good food and good services**. Hotels range in different sizes depending on the market requirement.

The development in the hotel industry leads through in the tourism of the country. The **beautiful and exotic locations** are new accessible for the entire tourists coming to the country. **Restaurants and coffee-shops** have always been the attraction of hotels. To cater the growing trend of pre-dinner drinks and dances, bars have also been incorporated in five star.

Need for the study

Hotels today have become such a popular and **profitable business**, that now they are recognize as an industry. The large and increasing of tourist coupled with rapidly changing social and cultural life of Indian community at large has resulted integrate demands for hotels. Today India has approved hotel rooms according to the requirement of customers.

REASON FOR SELECTING OF SITE:

- NOIDA IS THE FASTEST GROWING CITIES IN INDIA AND THRIVING HUBFOR ECONOMIC ACTIVITIES.
- IT IS LOCATED AT THE INTERSECTION OF WESTERN AND EASTERN DEDICATED CORRIDORS AND IS ALSO THE GATEWAY TO THE DELHI MUMBAI INDUSTRIAL CORRIDORS.
- IT IS ONE OF THE LARGEST TOWNSHIP IN ASIA AND LIES WITHIN THE NATIONAL CAPITAL RESION OF INDIA.
- IT HAS EMERGED AS A MODERNMODEL OF SMART TOWN PLANNING.

SITE LOCATION

**Site For Proposed Hotel Located In Noida
Sector 94 Uttar Pradesh**

SITE SURROUNDING

ROAD CONNECTIVITY

- NH-24 VIA MAYUR VIHAR VIHAR AND NIZAMUDDIN BRIDGE
- DND FLYWAY VIA ASHRAM- UNHINDERED ACCESS TO SOUTH DELHI.
- KALINDI KUNJ/ AMARPALI MARG VIA JASOLA: CONNECT TO THE FARIDABAD+ALTERNATE ROUTE TO SOUTH DELHI.



METRO CONNECTIVITY

- CENTRAL DELHI-NOIDA LINK (CBO VIA COMMON-WEALTH GAMES AND MAYUR VIHAR)-1KM.
- SOUTH DELHI LINK (JASOLA)-3KM.

LITERATURE CASE STUDY:

- HOTEL RADISSON BLU, KAUSHAMBI
- HOTEL RENAISSANCE, LUCKNOW

POSSIBLE CASE STUDY:

- HOTEL VIVANTA BY TAJ, WHITEFIEL BANGALORE
- LE MERIDIAN, NEW DELHI

WIND DIRECTION:

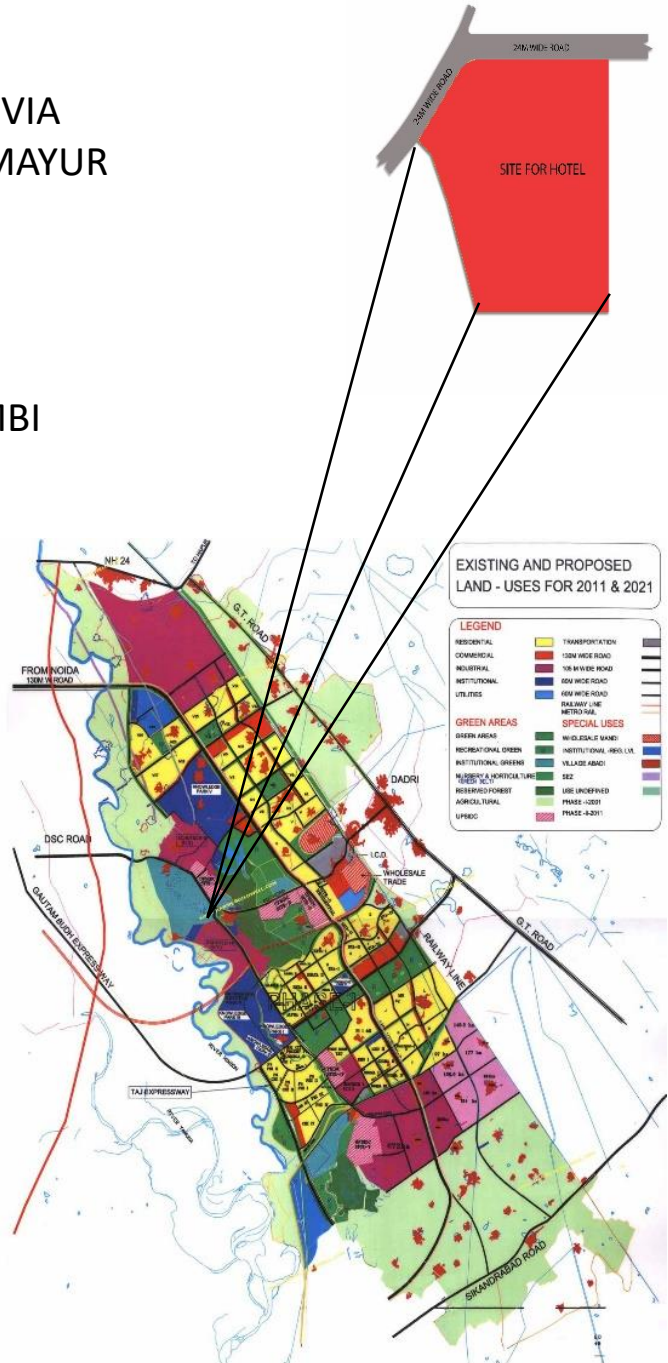
- WIND FLOWS FROM NORTH EAST TO SOUTH WEST.

SOIL:

- ALLUVIAL SOIL.
- LOAD BEARING CAPACITY IS 80-160 KN PER SQM
- PILE FOUNDATION

TEMPERATURE:

- MIN. TEMP.- 6 DEGREES
- MAX. TEMP.- 44 DEGREES



★★★★★



FIVE STAR HOTEL

Hotelstar		Excerpt of the catalogue of criteria
★	<i>Tourist</i>	<ul style="list-style-type: none"> • 100% of the rooms with shower/WC or bath tub/WC • Daily room cleaning • 100% of the rooms with colour-TV together with remote control • Table and chair • Soap or body wash • Reception service • Facsimile at the reception • Publicly available telephone for guests • Extended breakfast • Beverage offer in the hotel • Deposit possibility
★S	<i>Superior Tourist</i>	The Superior flag is provided when the additional service and accommodation provisions are not sufficient for the next Hotelstar. The bathroom facilities are usually at the same level as for two stars hotels but built from cheaper materials. The cost for regular inspection by independent associations is waived as well.
★★	<i>Standard</i>	<p>In addition to the single star (*) hotels:</p> <ul style="list-style-type: none"> • Breakfast buffet • Reading light next to the bed • Bath essence or shower gel • Bath towels • Linen shelves • Offer of sanitary products (e.g. toothbrush, toothpaste, shaving kit) • Credit cards

★★S	<i>Superior Standard</i>	The Superior flag is provided when the additional service and accommodation provisions are not sufficient for the next Hotelstar. The Standard-Superior does usually offer the same service level as three-star hotels but the interiors of the hotel are smaller and cheaper so that the three stars were not to be awarded by the inspection body. A two-star superior does not require mystery guesting.
★★★	<i>Comfort</i>	<p>In addition to the standard star (**) hotels:</p> <ul style="list-style-type: none"> • Reception opened 14 hours, accessible by phone 24 hours from inside and outside, bilingual staff (e.g. German/English) • Three piece suite at the reception, luggage service • Beverage offer in the room • Telephone in the room • Internet access in the room or in the public area • Heating facility in the bathroom, hair-dryer, cleansing tissue • Dressing mirror, place to put the luggage/suitcase • Sewing kit, shoe polish utensils, laundry and ironing service • Additional pillow and additional blanket on demand • Systematic complaint management system

FIVE STAR HOTEL

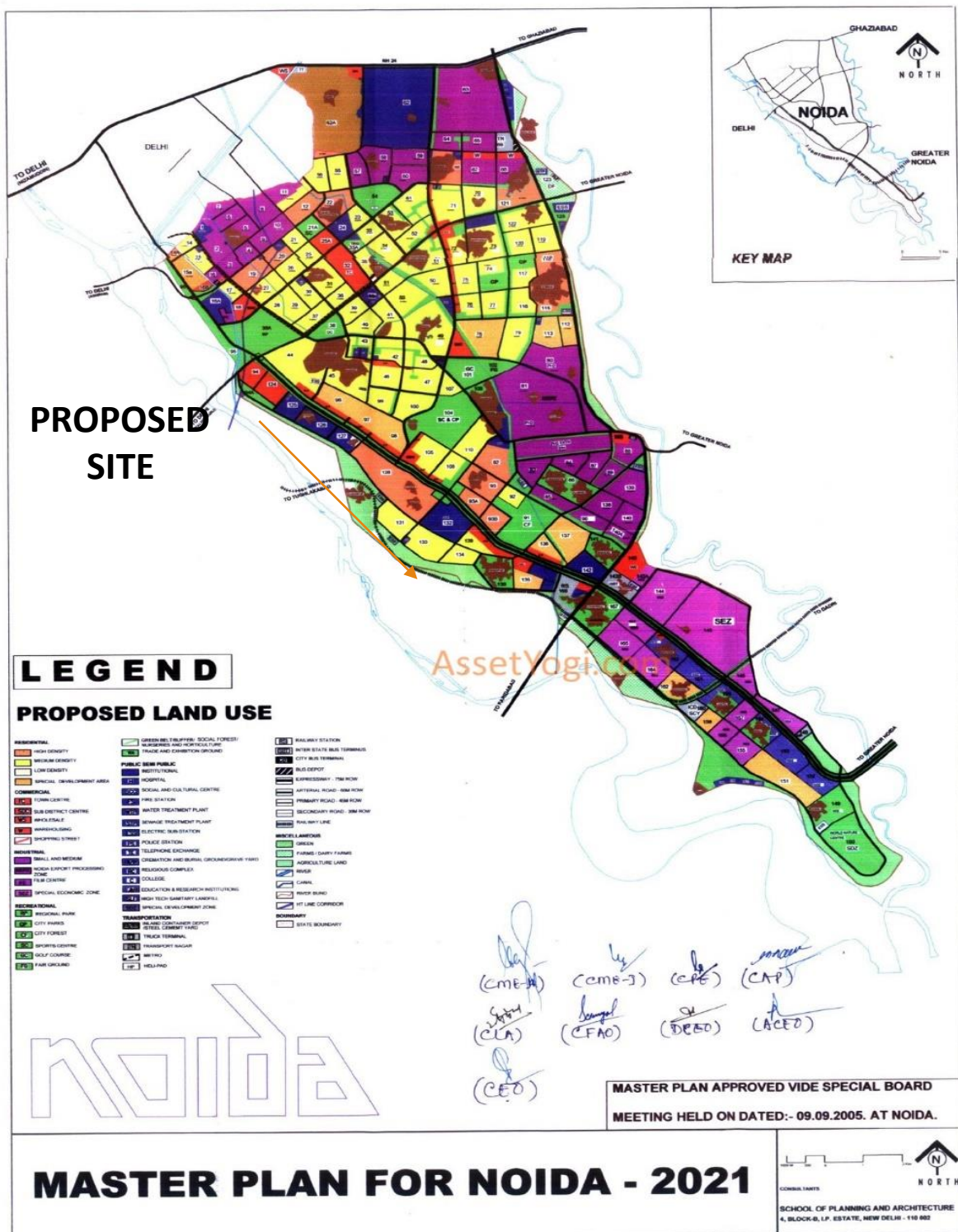
★★★★S	<i>Superior Comfort</i>	The Superior flag is provided when the additional service and accommodation provisions are not sufficient for the next Hotelstar. The accommodation facilities for a superior hotel need to be on a modern level and fully renovated which is checked regularly.
★★★★★	<i>First Class</i>	<p>In addition to the comfort star (***) hotels:</p> <ul style="list-style-type: none"> • Reception opened 18 hours, accessible by phone 24 hours from inside and outside • Lobby with seats and beverage service • Breakfast buffet or breakfast menu card via room service • Minibar or 24 hours beverages via room service • Upholstered chair/couch with side table • Bath robe and slippers on demand • Cosmetic products (e.g. shower cap, nail file, cotton swabs), vanity mirror, tray of a large scale in the bathroom • Internet access and internet terminal • "À la carte"-restaurant
★★★★★S	<i>First Class Superior</i>	The Superior flag is provided when the first class hotel has a proven high quality not only in the rooms. The superior hotels provide for additional facilities in the hotel like a sauna or a workout room. The quality is checked regularly by mystery guesting of an external inspection service.
★★★★★	<i>Luxury</i>	<p>In addition to the first class (****) hotels:</p> <ul style="list-style-type: none"> • Reception opened 24 hours, multilingual staff • Doorman-service or valet parking • Concierge, page boy • Spacious reception hall with several seats and beverage service • Personalized greeting for each guest with fresh flowers or a present in the room • Minibar and food and beverage offer via room service during 24 hours • Personal care products in flacons • Internet-PC in the room • Safe in the room • Ironing service (return within 1 hour), shoe polish service • Turndown service in the evening • Mystery guesting
★★★★★S	<i>Superior Luxury</i>	The Luxury star hotels need to attain high expectations of an international guest service. The Superior Luxury star is only awarded with a system of intensive guest care.

FIVE STAR HOTEL

ABOUT THE SITE:

THE SITE IS LOCATED IN SECTOR 94 NOIDA (GAUTAM
BUDH NAGAR) U.P.

SITE AREA IS 8 ACRE (32375 sqm)



PROPOSED SITE LOCATION:

AREA- 9ACRE (36421 sq. m)

GROUND COVERAGE=30% (10926 sq. m)

FAR= 4

BUILD UP AREA(MAX)=145684 sq. m



FIVE STAR HOTEL

SITE SURROUNDING :-



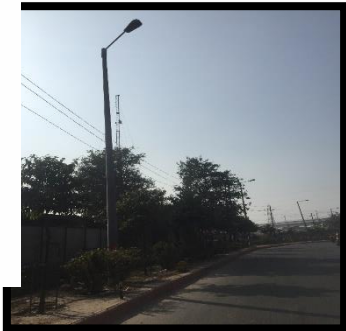
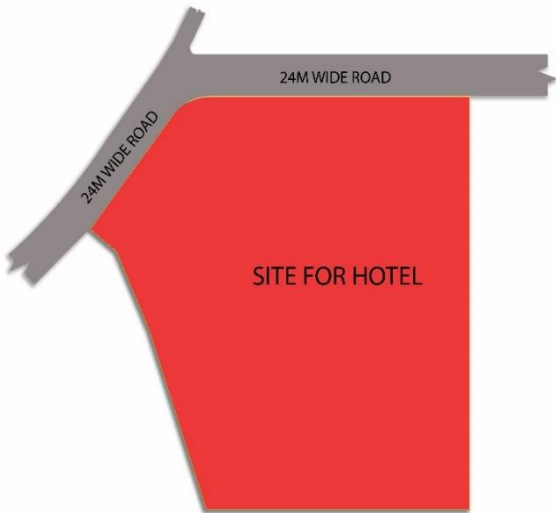
Metro Station



1. Commercial Complex



TOPOGRAPHY	Flat , no Rocks or Natural Terrains Present
SOIL TYPE	<ul style="list-style-type: none"> Alluvial Soil (Clay + 40 – 60 % Sand) Bearing Capacity 160 Kn/M²
VEGETATION	<ul style="list-style-type: none"> Trees Are Present Near The Site But On The Site Wild Bushes, Tropical Thorn Only, No Trees.
WATER SUPPLY	<ul style="list-style-type: none"> Water Will Be Supplied From Water Tank(2000 kl) In Sector 94, Noida
SEWER	<ul style="list-style-type: none"> Lines Laid On The Adjacent Road
TRAFFIC	<ul style="list-style-type: none"> The Road Adjoining Are Not Wide Enough, There Is No Service Road
ELECTRICITY	<ul style="list-style-type: none"> High Tension Wires Pass Through The Front Road. Transformer Is Also Present
GAS PIPELINE	<ul style="list-style-type: none"> Gas Pipe Line Runs On The Adjacent Road
STREET LIGHT	



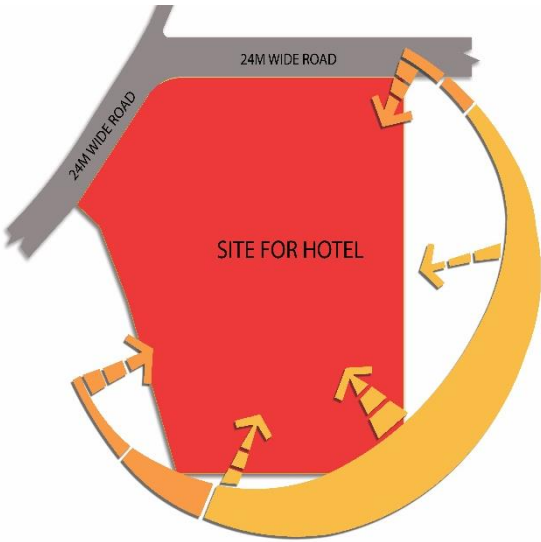
DESIGN CONSIDERATION IN COMPOSITE CLIMATE

Objectives

- 1) Resist Heat Gain In Summer And Resist Heat Loss In Winter
- Decrease Exposed Surface Area
 - Increase Thermal Resistance
 - Increase Buffer Spaces
 - Decrease Air Exchange Rate
 - Increase Shading
- 2) Promote Heat Loss In Summer/ Monsoon
- Increase Air Exchange Rate
-
- Increase Humidity Levels
 - Decrease Humidity In Monsoon

Physical Manifestation

- Orientation And Shape Of Building.
- Use Of Trees As Wind Barriers
- Roof Insulation And Wall Insulation
- Air Locks/ Balconies
- Weather Stripping
- Walls, Glass Surface Protected By Overhangs, Fins And Trees
- Pale Colour, Glazed China Mosaic Tiles Etc.
- Courtyard/ Wind Tower/ Arrangement Of Openings
- Trees And Water Ponds For Cooling Effect
- Dehumidifiers/ Desiccant Cooling



CLIMATE

LATITUDE: 28° 53'N
LONGITUDE: 77° 39'E
ZONE: TROPIC OF
CANCER
CLIMATE: COMPOSITE

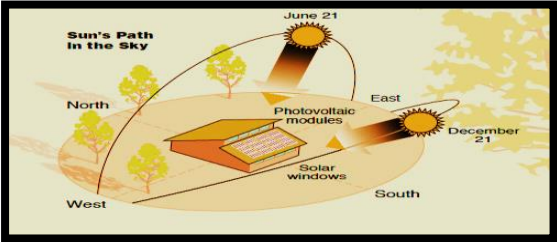
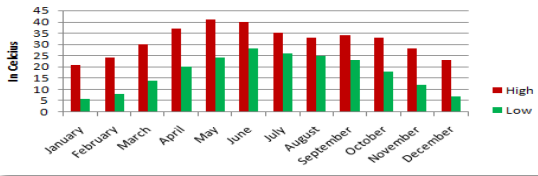
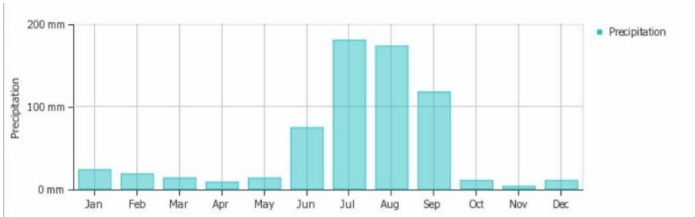
RAINFALL

The Maximum Rainfall In Noida Is 180 Mm In July And Minimum Is 1 Mm In November. The Average Annual Rainfall In The District Is 728 Mm. About 81% Of The Annual Rainfall Is Received During The Monsoon Months Of July, August, And September

RELATIVE HUMIDITY

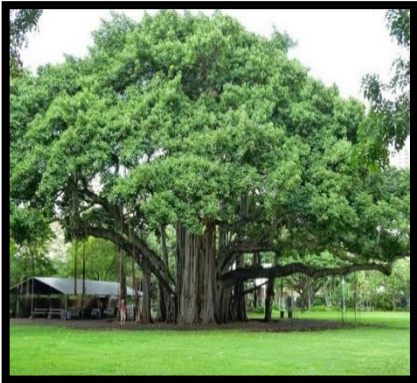
IN DRY SEASONS: 20-55%
IN WET SEASONS: 55-95%

Climate data for Noida													[hide]
Month	Jan	Feb	Mar	Apr	May	Jun	Jul	Aug	Sep	Oct	Nov	Dec	Year
Average high °C (°F)	21 (70)	24 (75)	30 (86)	36 (97)	38 (100)	37 (99)	35 (95)	34 (93)	34 (93)	33 (91)	29 (84)	23 (73)	31.2 (88.1)
Average low °C (°F)	6 (43)	10 (50)	15 (59)	21 (70)	27 (81)	29 (84)	27 (81)	26 (79)	25 (77)	19 (66)	12 (54)	08 (46)	18.8 (65.8)
Average precipitation mm (inches)	25 (0.98)	22 (0.87)	17 (0.67)	7 (0.28)	8 (0.31)	65 (2.56)	211 (8.31)	173 (6.81)	150 (5.91)	31 (1.22)	1 (0.04)	5 (0.2)	715 (28.15)



VEGETATION:

<u>DECIDIOUS TREE</u>	<u>SCIENTIFIC NAME</u>	<u>HEIGHT</u>
ORCHID	Bauhinia Variegata	15 m
ASHOKA	Saraca Asoka	15 m
BISMARCK PALM	Bismark Nobilis	25 m
PEEPAL	Ficus Religiosa	30 m
INDIAN A CORK	Millingtonia Hortensis	24 m
PUTRANJIVA	Putranjiva Roxanbhughii	25 m
BABUL	Vachellia Nilotica	5-20 m
BAEL	Aegle Marmelos	Not Defined
LEBBECK	ALBIZIA LEBBECK	18-30 m



<u>SMALL DECIDUOUS TREE</u>	<u>SCIENTIFIC NAME</u>	<u>HEIGHT</u>
Golden Shower Tree	Cassia Fistula	10-20 m

WIND:

Wind Direction:

Monsoon Winds - Se To Nw (July-sept)
Cold & Dry Winds - Ne To Sw (Oct-feb)
Hot And Dry Wind(loos) - From West (Mar-jun)

WIND VELOCITY:

AVERAGE SPEED : 6.875(kts)
On Average, The Most Wind Is Seen In June.
On Average, The Least Wind Is Seen In November

The Composite Zone Covers Central Part Of India Including Cities Like Delhi , Cities Of Uttar Pradesh , Madhya Pradesh Etc.

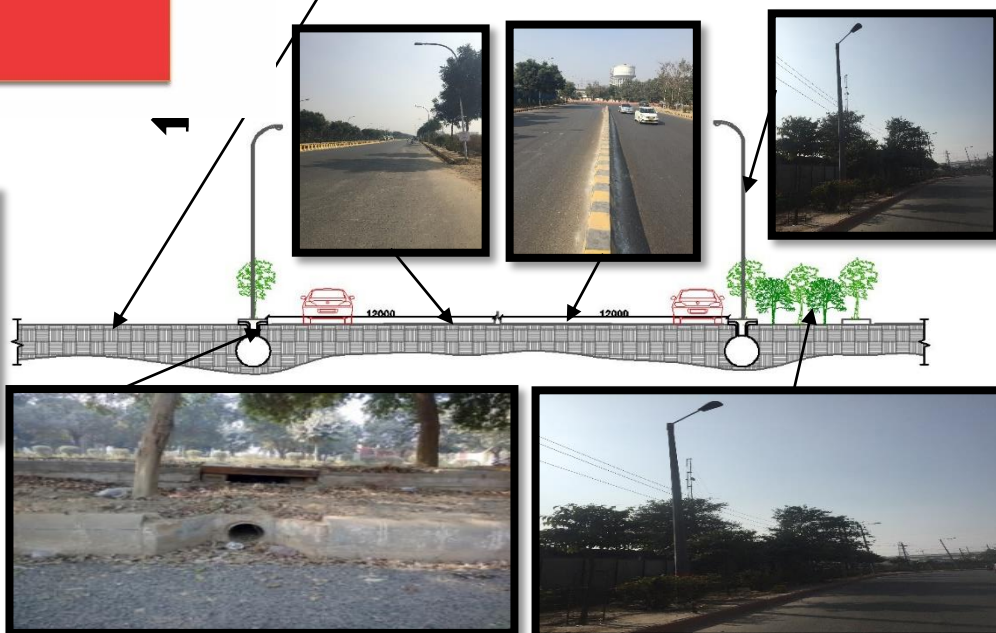
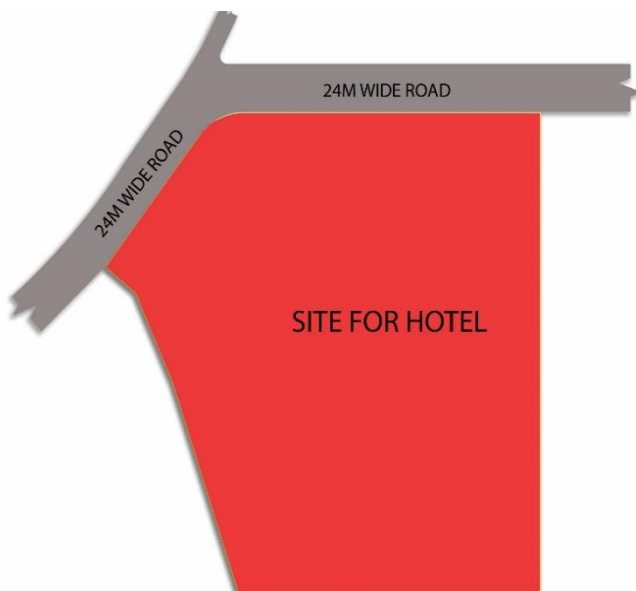
Most Common Type Of Vegetation In Composite Climate Is **“Deciduous”** .
These Type Of Trees Are Less Dense Than Evergreen Trees And Shed Their Leaves In Particular Season Of A Year.

Their Average Height Is 20-25m. Generally Require Less Water And Can Bear Harsh Sun In Summers Too.

<u>SHRUBS</u>	<u>SCIENTIFIC NAME</u>	<u>HEIGHT</u>
Chaff Flower	ACRYANTHES ASPERA	-
Poppy	ARGEMONE MEXICANA	-
Kair	CAPPARIS DECIDUA	5 m
Crown Flower	CALOTROPIS GIGANTEA	4 m

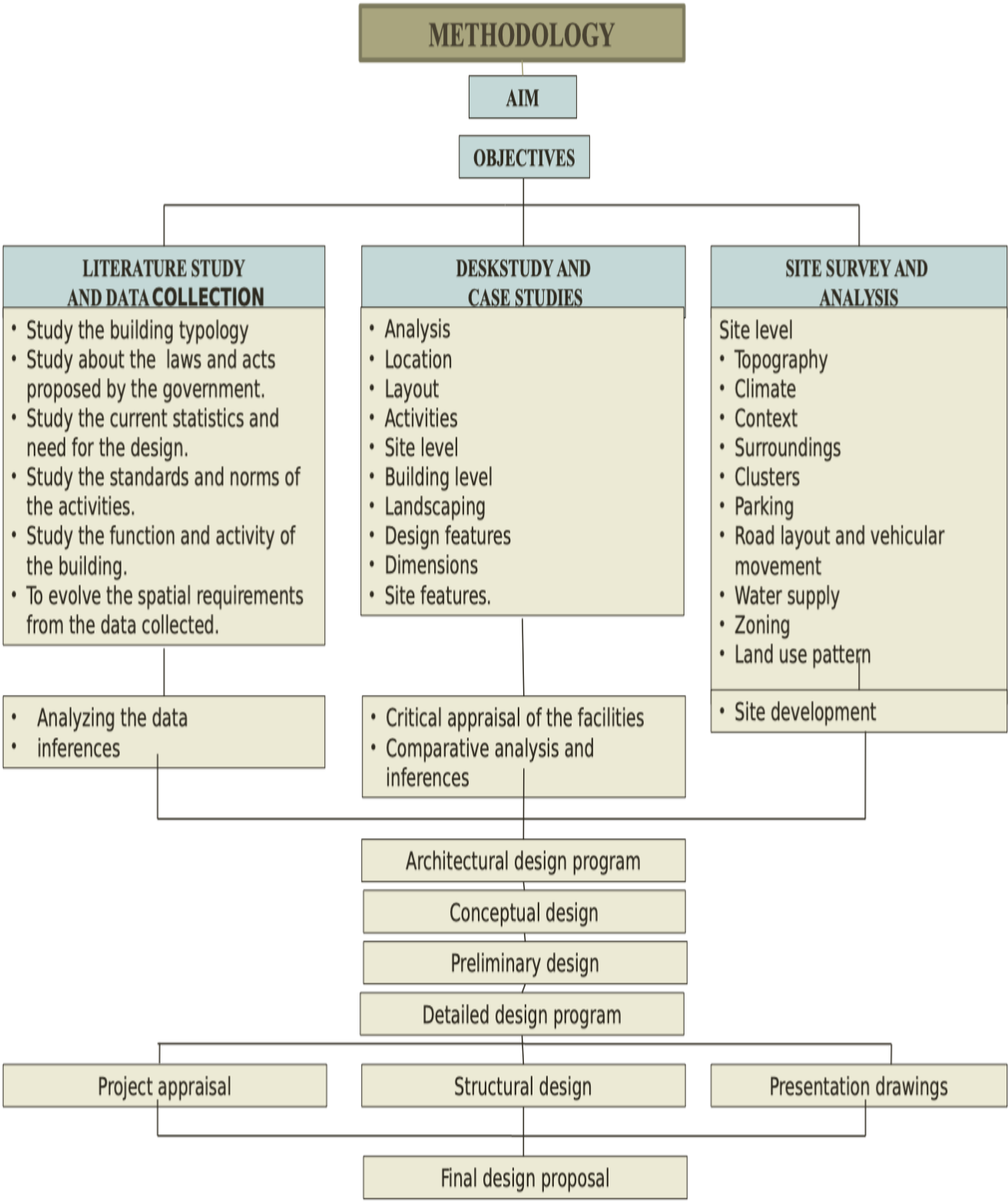


ROAD SECTION



S.W.O.T :-

STRENGTH	WEAKNESS	OPPORTUNITIES	THREATS
<ul style="list-style-type: none"> Plain Land(low Gradient). Easily Accessible. Surrounded By Road From Two Side Sides Abundant Natural Resources Like Wind, Daylight Etc. Facilities Like Sewer , Water Supply , Security , Treated Water Etc . Low Ground Table 	<ul style="list-style-type: none"> In Earthquake Zone 4. Connected Road Are Not Wide Enough No Service Road Available 	<ul style="list-style-type: none"> Opportunities Of Increase Foot Fall In Coming Time Due To Propose Airport Terminal 	<ul style="list-style-type: none"> Highly Earthquake Prone Area Subjective To Severe Damage.. Unavailability Of Local Market Place Near The Site Usually At Night.



METHODOLOGY

FIVE STAR HOTEL

CASE STUDY:- 1

HOTEL RADISSION BLU DELHI

CASE STUDY- RADISSON BLU, KAUSHAMBI

Radisson Blu, formerly Radisson, is an upscale international chain of full services hotels and resorts brand for Radisson.

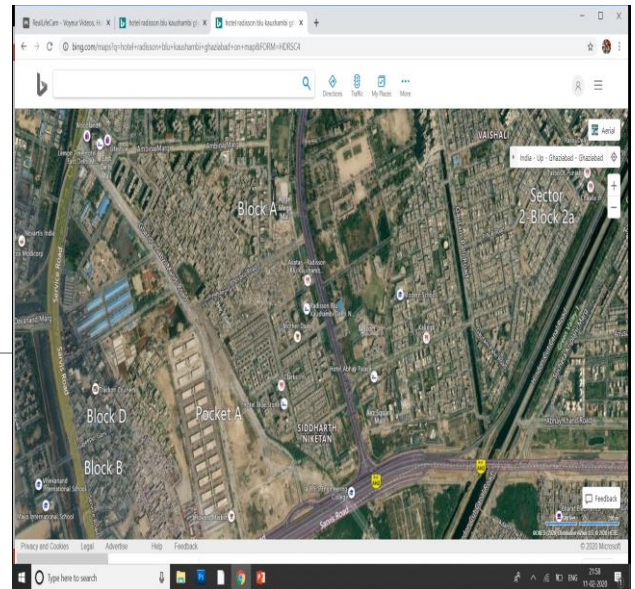
Radisson Blu Kaushambi, the first and the only 5 star deluxe accommodation in east Delhi-NCR. Ideally located on the east side of Delhi, the five-star Radisson Blu Kaushambi Delhi NCR boasts top amenities.

Soothing massage at Nilaya Spa, free-form swimming pool. Services like our travel desk, a business Center and airport transfers to enhance the stay. If you're looking for a place to host a conference or a wedding, reserve our flexible and elegant event space, which can accommodate up to 3,500 guests and the latest audio-visual equipment, catering options and the assistance of our dedicated staff.

CONCEPT:

The Whole Concept Was To Design A Space To Provide Leisure And Comfort To The Business Elites, Travellers By Providing Modern Amenities. This Was Achieved in Planning As Well As In Facade Stage **PROS/CONS OF HOTEL.**

- The Hotel Is Located On A Posh Locality Which Is Surrounded By Commercial And Industrial Areas.
- The Hotel Is The Only 5 Star Hotel in East Delhi - NCR.
- Easily Accessible To Various Amenities Like Entertainment, Leisure And Conveyance.
- Equipped with Modern Facilities Helps The Business Centres To Organize Events. Since, Being The Only 5 Star Hotel, The Size Is Considered Less As Compared To Proximity Area.

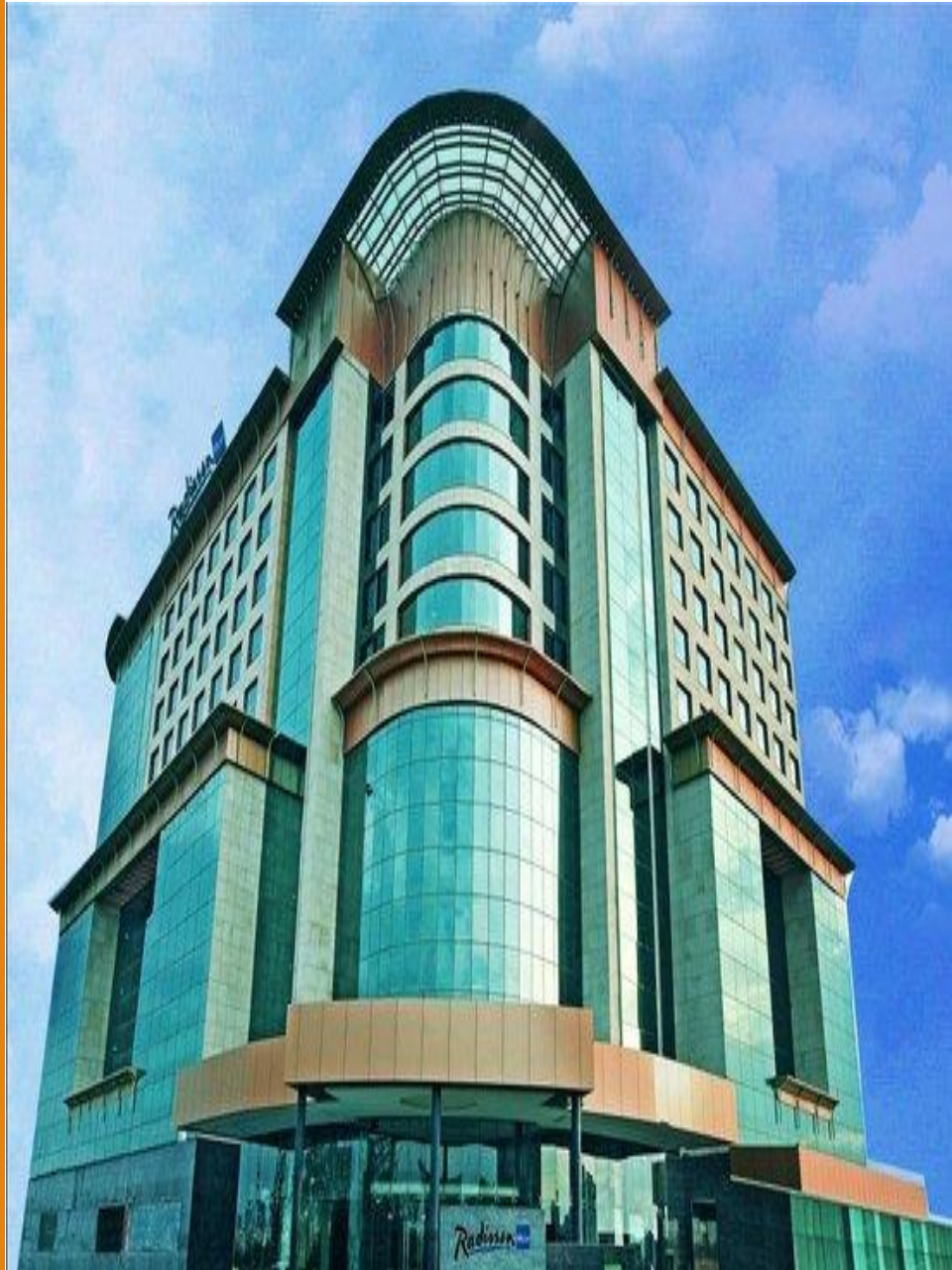


SITE DESCRIPTION

THE SITE IS LOCATED ON A MAIN ROAD WHICH CONNECTS NH 24 ON ONE PART AND GHAZIABAD CITY TO THE OTHER. THE SITE IS RECTANGLE IN SHAPE OF AREA 4.15 ACRES. HOTEL BEING SQUARE IN SHAPE WITH THE FRONT CORNER EDGE CHAMFERED AND WITH CENTRAL VOID.

THE 9M WIDE ROAD IS PAVED WITH CONCRETE TILES WITH SPEED BREAKERS IN OTHER TO AVOID HIGH SPEED.

THERE IS OPEN PARKING IN FRONT AND THE GREEN AREA ACTS LIKE A BUFFER SPACE B/w THE MAIN ROAD AND SITE.



FIVE STAR HOTEL

LOCATION:

- SECTOR 14, KAUSHAMBI

CLIENT:

- CARLSON REZIDOR HOTEL GROUP

ARCHITECT:

- THOM CATALLO

ACCESSIBILITY:

- KAUSHAMBI METRO STATION-2KMS
- AKSHARDHAM TEMPLE-6.8KMS
- NOIDA COMMERCIAL HUB-7.2KMS
- NEW DELHI RAILWAY STATION-14.5KMS
- IGI INTERNATIONAL AIRPORT-32.5KMS
- PRAGATI MAIDAN EXPO CENTER-11KMS
- WAVE MALL-1.8KMS
- CANNAUGHT PLACE-14.2KMS

PROJECT TYPE:

- HOSPITALITY/COMMERCIAL

CLIMATE:

- AVERAGE TEMP.- 4 TO 48 C
- AVERAGE RAINFALL-51MM
- AVERAGE HUMID-63%

AREA:

- TOTAL SITE AREA-16,800 SQ.M
- GROUND COVERAGE-4200 SQ.M
- F.A.R.-2.1
- TOTAL BUILT UP AREA- 35280 SQ.M

REASON FOR SELECTION:

- The Hotel Belongs To Prestigious Hospitality Group Having Project All Over The World.
- The Main Clients / Guest Are Business Class Functionally And Planning Is Done To Provide Comfort And Leisure Stay Rooms And Interiors Modern Element Used.

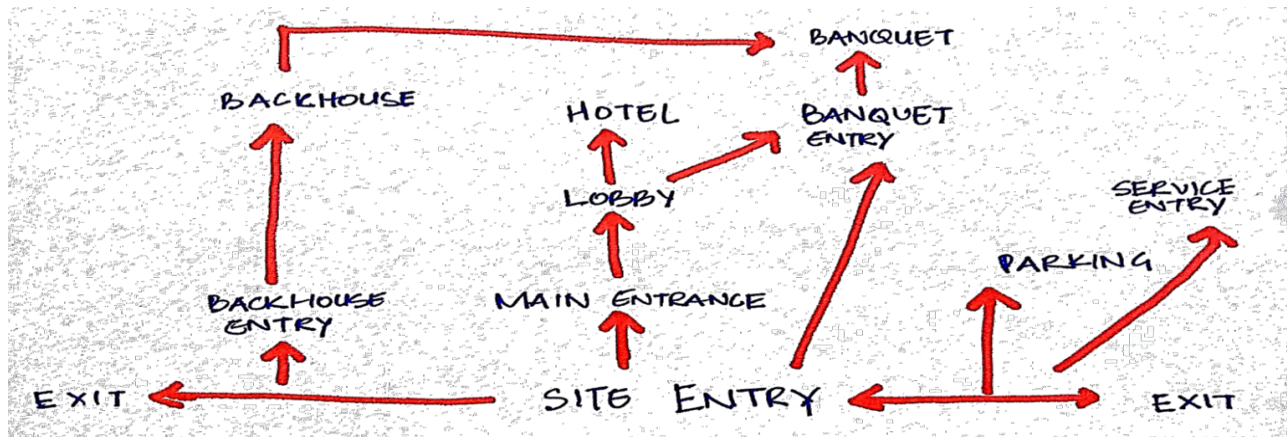
Lobby-

Area- 523 Sqm,
Standard 1.2 Sqm X No. OF Rooms= 179 Sqm

- The Entrance of The Hotel Leads To A Double Height Lobby, Designed With Modern Interiors With A Reception, Shops, Bakery Kiosk And Sitting Area
- Various Areas Like Lift, Restaurants, Bars Are Connected To Lobby Well Planned, Acting As A Connecting Element To Various Part Of The Hotel. Use Of Combination Of Beige And Brown Colours Creates A Sense Of Cosiness.

TIME OFFICE :-

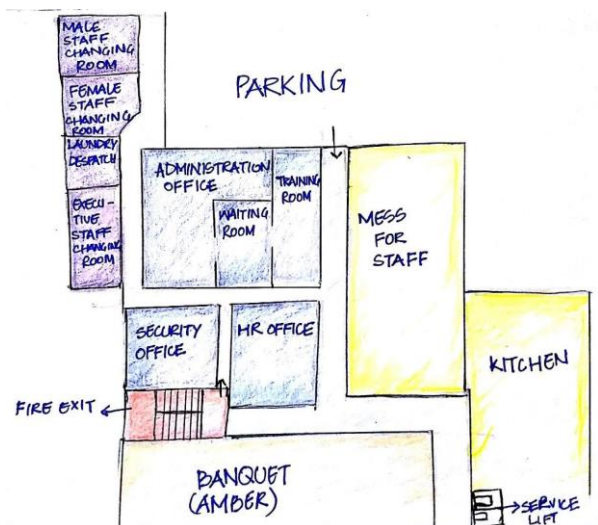
Located in Basement-1, This Area Is At The Entrance Of The Back House Of Hotel Which Consists Sections Like HR Office, Administration Office, Security Office, Locker Rooms Etc. In The Adjoining Part Is Kitchen, Staff Mess Which Has A Connection To Basement Parking As Well As Amber Banquet.



PROJECT SILENT FEATURE:

- UNIQUE STYLISH ROOMS SUITES.
- 147 CONTEMPORARY ROOMS.
- CLUB LOUNGE.
- NILAYA SPA & SALON.
- BANQUET SPACE UPTO 3000 GUESTS.
- 4 MULTICUISINE RESTAURANTS
- LUST THE BAR.
- UPSCALE AMMENITIES.
- ERGONOMICALLY DESIGNED FURNITURES.

SOLAR PLANT, SMOKE OUTLET TERRACE
ELEVENTH FLOOR, ROOMS
TENTH FLOOR, ROOMS
NINTH FLOOR, ROOMS
EIGHT FLOOR, ROOMS
SEVENTH FLOOR, ROOMS
SIXTH FLOOR, SPA, SALON, SWIMMING POOL, ROOMS
FIFTH FLOOR, SWIMMING POOL, PLANT, HOUSE KEEPING OFFICE, IT OFFICE
FOURTH FLOOR, COMMERCIAL FLOOR
THIRD FLOOR, COMMERCIAL FLOOR
SECOND FLOOR, COMMERCIAL FLOOR
FIRST FLOOR, BANQUET (LAVANYA)
GROUND FLOOR, RECEPTION, RESTAURANTS, OPEN PARKING,
BASEMENT-1, PARKING, TIME OFFICE, KITCHEN, BANQUETS (AMBER)
BASEMENT-2, PARKING, CHILLER PLANT, STP, WTP,



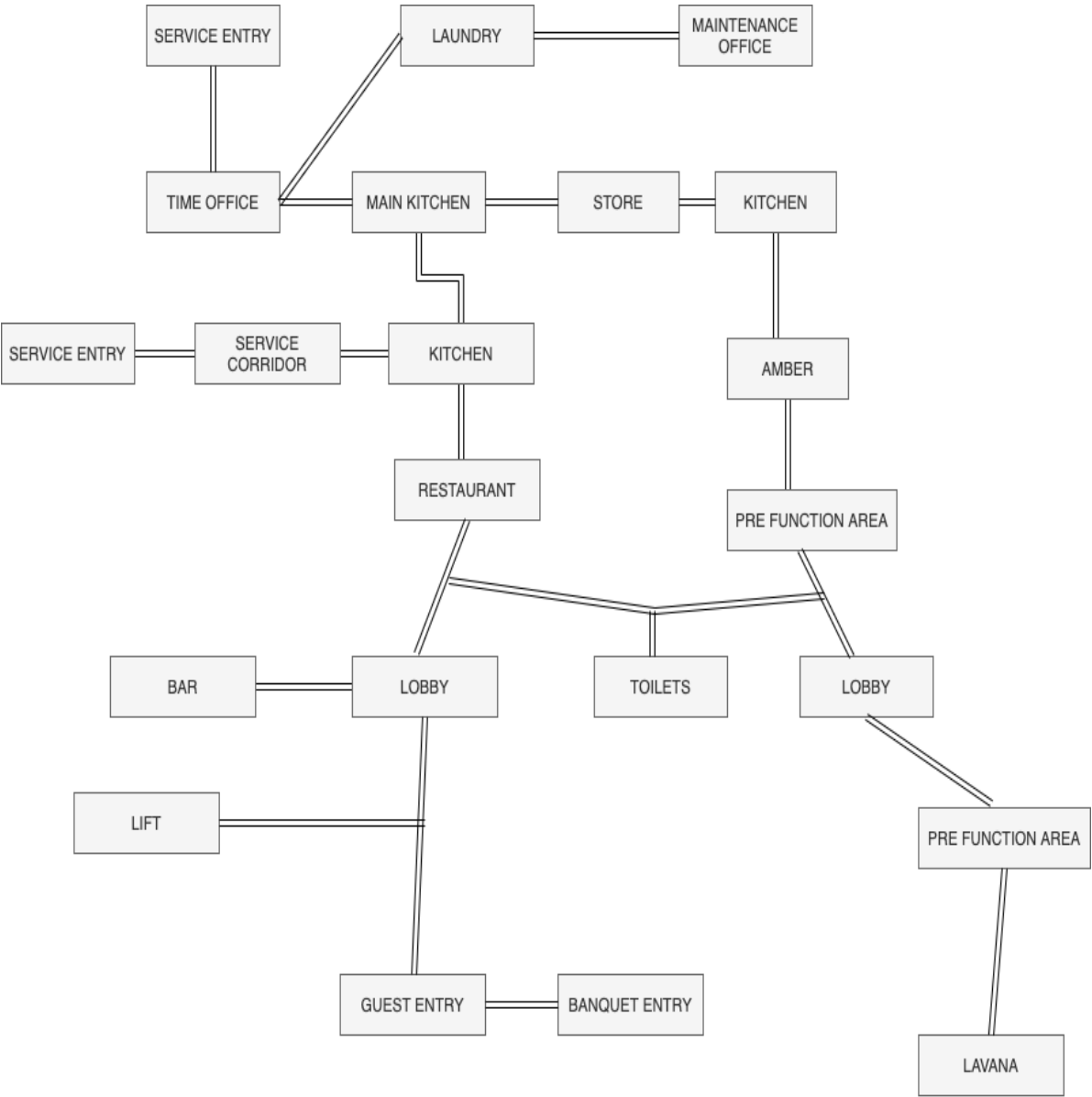
HALL	CAPACITY	AREA (SQ. M.)
AMBER	800	725
AMBER 1	300	363
AMBER2	300	363
AMBER 3	300	651
AMBER PFA	-	744
AMBER SALON	200	224
AMBER SALON PFA	-	56
LAVANYA 1	250	558
LAVANYA 1 PFA	-	158
LAVANYA 2	150	521
LAVANYA 2 PFA	-	158
LAVANYA 3	250	558
LAVANYA 3 PFA	-	93

BANQUET HALL:

All Amber Banquets Are Located In Basement1 And All Lavanya Banquets Are Located on First Floor.
All The Banquet Have Separate Kitchen.
It Has Italian Marble Floor Finish With Cream Vertical Surface With Proper Acoustics Panel.
The Banquet Are Partitioned By Temporary Panels. Massive And Beautiful Chandeliers To The Hall Provides A Sense Of Royalty.

BANQUET HALL STANDARD:

For meeting- 0.9-1.1sqm M/Head, 0.5-0.65 sqm M/Head
Dining With Banquet Layout- 1.1-1.3 sqm M/Head



BASIC AMENITIES:

PRIVATE AREAS:

- Guest Room – 147
- Superior Room -89
- Deluxe Room- 12
- Business Class Room- 25
- Executive Suite-20
- Deluxe Suite-1

BANQUET HALLS:

- Amber
- Amber 1,2,3
- Amber Salon
- Lavanya 1,2,3

PUBLIC AREAS:-

- Restaurant And Bar
- Avatar- All Day Restaurant
- Sultan- The Veg. Restaurant
- Kama- North Indian Cuisine
- Lust - The All Day Bar
- Lust By The Pool- Bar At Swimming Pool Side.

HOTEL ADMINISTRATION AREAS:

- F & B (Food Beverages)
- HR Office
- Security Office
- Administration Office
- Maintenance Office
- Engineer Office
- Front Office, Reception
- Housekeeping Office
- Finance Office
- Sales And Marketing Office
- Laundry Office

SERVICES :-

WATER SUPPLY & TREATMENT

- The Hotel Has Its Own Bore well And A Water Treatment Plant Both For Inlet of Water And The Water Discharged.
- According to Govt. Of India, The Water Should Be Treated Before Being Discharged To The Sewer Line.
- The Hotel Has Its Own System Of Filtration, Chlorination And Purification
- Hotel Has Its Own Ro Plant For Purification of Water
- The Stp Plant Is Located in Basement 2 & Water Treatment Plant Is Clubbed With Boiler Plant And Fire Fighting Plant in Basement 2.

KITCHEN

- The Main Kitchen Caters The Sultan Restaurant.
- There Are Various Sections In The Kitchen Like Poultry, Baking, Veg. Non-veg. Etc.
- There Are Total 5 Kitchen In The Hotel, For Each. Main, Avatar, Kama, Amber, Lavanya.
- The Cold Storages Are Separate For Each Kitchen.
- There Is A Special Area In Basement 2 Where All Expensive F & b Products Are Stored Like Dry Fruits, Wine, Chocolates Etc. RO Plant Is Placed Separately Adjacent To The Above Clubbed Plants

AIR CONDITIONING -.

- The Whole Structure is Centrally Air Conditioned•
- Fcu Are Provided To Each Room With A Separate Controller.
- Ac Plant Is Located on Basement 2.
- Total There Are 3 Chiller Plants.

LEISURE

- Swimming Pool
- Nilaya, The Spa
- Salon
- Gymnasium
- Sin

ROOMS :-

SUPERIOR ROOM

- Room Size - 31 Sqm
- Ideal For Business And Leisure Travellers
- Total No. Of Room 89

DELUXE SUIT

- Room Size -94 SQm
- UP SCALE FEATURES LIKE MARBLE BATHROOM, A SEPARATE LIVING ROOM & A WORK/DINING ARE
- Total No. Of Room 1

DELUXE ROOM

- Room Size - 33 Sqm
- Deluxe Room With King Size Bed Include All The Amenities Of Superior Room
- Total No. Of Room 12

BOILER

- The Boiler Room is Provided on Basement 2.
- At Hotel, Steam Boilers Are Used To Produce Steam For Heating Water Which Is Then Supplied To Various Areas.

PASSENGER LIFT:

- Passenger Lift Of 16 Passenger Capacity- 3
- Service Lifts Of 21 Passenger Capacity-2
- Luggage Lift Of 12 Passenger Capacity-1

BUSINESS CLASS ROOM

- Room Size - 39 Sqm
- Designed for Corporate Travellers With Additional Mini Bar
- Total No. Of Room 25

EXECUTIVE SUIT

- Room Size – 52 Sqm
- Include Business Class Amenities With Various Complementary Facilities
- Total No. Of Room 20

DELUXE SUIT

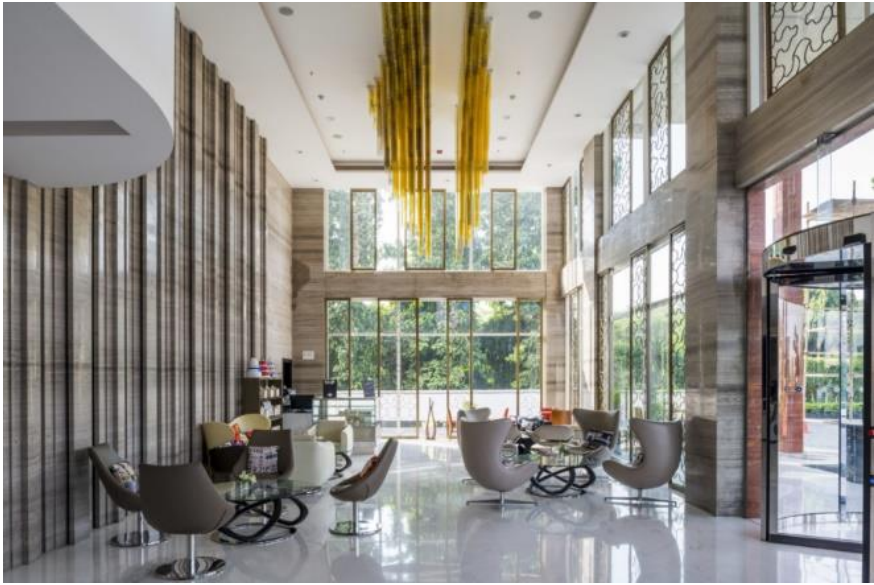
- Room Size - 94 Sqm
- UP SCALE FEATURES LIKE MARBLE BATHROOM, A SEPARATE LIVING ROOM & A WORK/DINING ARE
- Total No. Of Room 1

CASE STUDY- 2

HOTEL RENAISSANCE, LUCKNOW



FIVE STAR HOTEL



LOBBY



ROOM



SKY BAR

Renaissance Hotels

The city's tallest hotel, Renaissance Lucknow offers 5-star luxury high above the vibrant downtown district. Embrace refined comfort in tastefully appointed accommodations with modern interiors, deluxe amenities and plush furniture with innovative Smart glass features. Delight your palate with distinctive international cuisine at our stylish hotel restaurants. Discover intriguing attractions in and around Gomti Nagar, including Hazratganj, Charbagh railway station, Indira Gandhi Pratishthan and Ambedkar Memorial Park.

Renaissance Marriott is a 112-room, 5-star hotel in a prime location with views over the Gomti River in **Lucknow**, Uttar Pradesh, India. Across 16 floors Spread over 16 floors, with a large banquet hall and business centre on the ground and first levels, the hotel offers all-day dining, a multi-cuisine restaurant located on the 14th floor and swimming pool and bar on the 16th..

SITE DESCRIPTION

THE SITE IS LOCATED IN VIPIN KHAN, GOMTI NAGAR, LUCKNOW. THE SITE IS ACCESSIBLE FROM A 12M WIDE ROAD CONNECTING TO A 24M WIDE MAIN ROAD SEPERATING ENTRANCE FOE GUEST, STAFF AND SERVICES IS GIVEN.

- THE SITE IS RECTANGULAR IN SHAPE OF AREA 1.9 ACRES.
- THERE IS AN UNDER GROUND PARKING AND THE FRONT PARKING OF THE HOTEL IS FOR VISITORS AND TAXI AND THE GREEN AREA ACTSBLIKE A BUFFER APACE B/W THE MAIN ROAD AND THE SITE.

PROJECT SILENT FEATURES

- UNIQUE STYLISH ROOMS SUITS.
- CLUB LOUNGE AND SKY BAR WITH POOL.
- BANQUET SPACE NAMED “TOPAZ” FOR 1000+300 PERSONS.
- 4 MULTICUISINE RESTAURANTS.
- UPSCALE AMENITIES.
- BEAUTIFULL VIEW FROM THE TOP.(5-6 KM)
- 111 ROOMS WITH EXOTIC VIEW.

LOCATION- VIPIN KHAND, LUCKNOW

ARCHITECT- Chapman Taylor was the Lead Architect for the project.

ACCESSIBILITY-

- INDRA NAGAR METRO STATION-6.1KM
- HAZRATGANJ METRO STATION-4.6KM
- CHARBAGH RAILWAY STATION-7.1KM
- NEW HIGH COURT-5.4KM
- CHAUDHARY CHARAN SINGH INTERNATIONAL AIRPORT, LUCKNOW-17.6KM
- SAHARA MALL-4.4KM

CLIMATE-

The **Lucknow** lies on 121m above sea level

The **climate** here is mild, and generally warm and temperate

- **maximum temperature** in the **Lucknow** was 45.4 degrees Celsius.
- **MINIMUM temperature** in the **Lucknow** was -0.2 degrees Celsius.

AREA

- TOTAL SITE AREA-7,854.19 sq m
- GROUND COVERAGE AREA-2,644 sq m
- TOTAL BUILD UP AREA- 42305sq m

LOBBY-

- The Entrance of The Hotel Leads To A Double Height Lobby, Designed With Modern Interiors With A Reception, Bakery Kiosk And Sitting Area.
- Various Areas Like Lift, Restaurants, Bars Are Connected at back of the Lobby Well Planned, Acting As A Connecting Element To Various Part Of The Hotel.

BANQUET HALL:

- “TOPAZ” Banquet is Located at ground floor.
- The Banquet Have Separate Kitchen.
- It Has Italian Marble Floor Finish With Cream Vertical Surface With Proper Acoustics Panel.
- The banquet area is divided in two separate portion, one is closed area with seating of 300 persons at a time. And second portion is an open ground for almost 1000 person.

BASIC AMENTIES:

PRIVATE AREAS:

- Guest Room – 111
- Superior Room-
- Deluxe Room- 12
- Business Class Room- 25
- Executive Suite-10
- Deluxe Suite-1

PUBLIC AREAS:-

- Restaurant And Bar
- Sepia-All Day Restaurant with multicuisine.
- Sky - The All Day Bar
- SKY- By The Pool- Bar At Swimming Pool Side.

HOTEL ADMINISTRATION AREAS:

- F & B (Food Beverages)
- HR Office
- Security Office
- Administration Office
- Maintenance Office
- Engineer Office
- Reception
- Housekeeping Office
- Finance Office
- Sales And Marketing Office
- Laundry Office
- **LEISURE**
- Swimming Pool
- Gymnasium

ROOMS :-

BASIC ROOM

- Room Size - 28 Sqm
- Ideal For FAMILY And Leisure Travellers
- Total No. Of Room 70

STUDIO SUIT

- Room Size -65 SQm
- UP SCALE FEATURES LIKE MARBLE BATHROOM WITH BATHTUB, A SEPARATE LIVING ROOM & A WORK DINING AREA
- Total No. Of Room 1

DELUXE ROOM

- Room Size - 33 Sqm
- Deluxe Room With King Size Bed Include All The Amenities Of Superior Room
- Total No. Of Room 20

KITCHEN

- The Main Kitchen Caters The TOPAZ Restaurant.
- There Are Various Sections In The Kitchen Like Poultry, Baking, Veg. Non-veg. Etc.
- There Are Total 3 Kitchen In The Hotel, For Each. Main, TOPAZ, SEPIA, AND SKY BAR.
- The Cold Storages Are Separate For Each Kitchen.
- There Is A Special Area In Basement 2 Where All Expensive F & b Products Are Stored Like Dry Fruits, Wine, Chocolates Etc. RO Plant Is Placed Separately Adjacent To The Above Clubbed Plants

BUSINESS CLASS ROOM

- Room Size - 39 Sqm
- Designed for Cooperate Travellers With Additional Mini Bar
- Total No. Of Room 12

EXECUTIVE SUIT

- Room Size – 52 Sqm
- Include Business Class Amenities With Various Complementary Facilities
- Total No. Of Room 10

SERVICES :-

WATER SUPPLY & TREATMENT

- The Hotel Has Its Own Bore well And A Water Treatment Plant Both For Inlet of Water And The Water Discharged.
- According to Govt. Of India, The Water Should Be Treated Before Being Discharged To The Sewer Line.
- Hotel Has Its Own RO Plant For Purification of Water

AIR CONDITIONING -.

- The Whole Structure is Centrally Air Conditioned
- Fcu Are Provided To Each Room With A Separate Controller.
- Ac Plant Is Located on Basement.
- Total There Are 3 Chiller Plants.

PASSENGER LIFT:

- Passenger Lift Of 16 Passenger (4)
- Service Lifts Of 21 Passenger Capacity-2
- Luggage Lift Of 12 Passenger Capacity-1
- GOODS LIFT

NCLUDES:

112 room hotel, a restaurant, 6 meeting rooms, with 2,700m² of conference space, and a roof top infinity pool

AREA:

17,500m²

HEIGHT:

16 floors

COST:

£18m

COMPLETED:

2015

KEY AWARD:

Best Hotel Architecture India - Asia Pacific International Property Awards 2015

Critically acclaimed

Before it even opened in 2015, the project gained the accolade 'Highly Recommended' in the 'Best Hotel Architecture for India' element of the Asia Pacific Property Awards.

Across 16 floors

Spread over 16 floors, with a large banquet hall and business centre on the ground and first levels, the hotel offers all-day dining, a multi-cuisine restaurant located on the 14th floor and swimming pool and bar on the 16th.

LITERATURE STUDY:- 1

HOTEL VIVANTA
BY TAJ,
WHITEFIELD, BANGALORE



INTRODUCTION

- VIVANTA, inspired from “Bon Vivant,” speaks of style, sophistication and refinement.
- The word symbolizes life and being alive.
- VIVANTA can be associated with vitality, all that is vivacious and vivid in character.
- Its identity is sophisticated, handcrafted and contemporary.

Standing at the main entrance to the International Tech Park, Bangalore (ITPB).

- Located 45 km away from the Airport, 18 km away from the CBD of the city.
- Gateway statement between the IT Park and the developing city around it.
- Architects: WOW Architects | Warner Wong Design
- Location: Whitefield, Bangalore, Karnataka, India
- Collaborator: Spazzio Design Architecture
- Client: The Indian Hotels Company Limited (IHCL)
- Area: 19638.0 sqm
- Project Year: 2009
- Photographs: Aaron Pocock

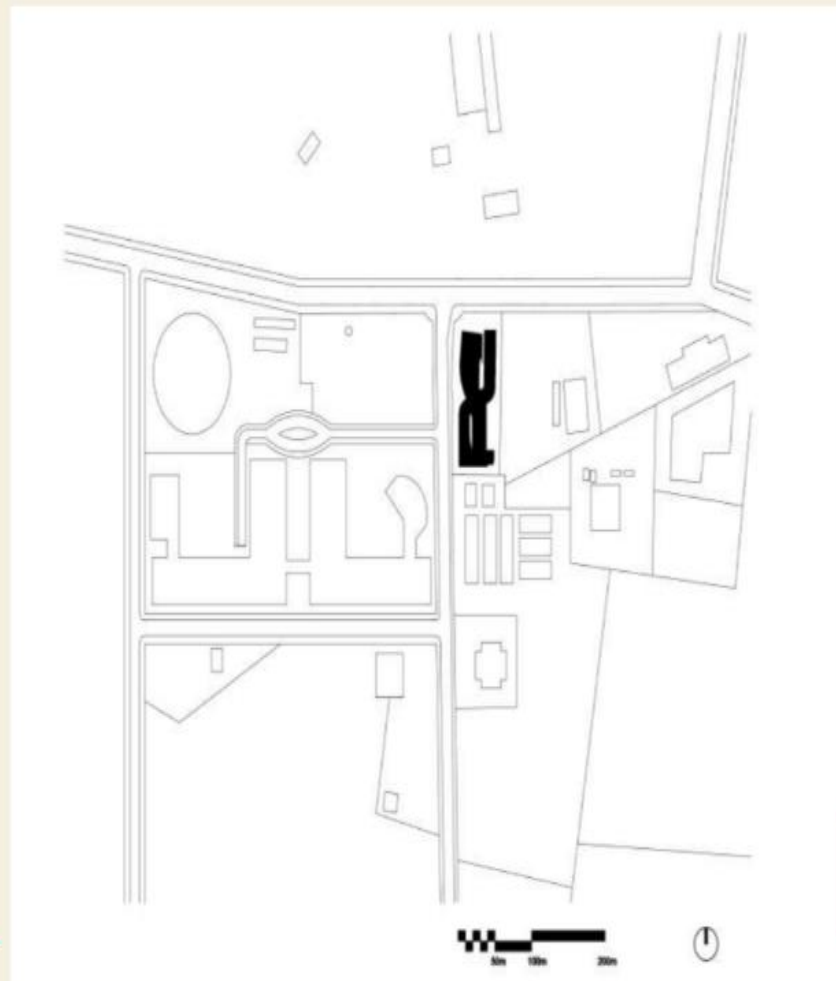
Site

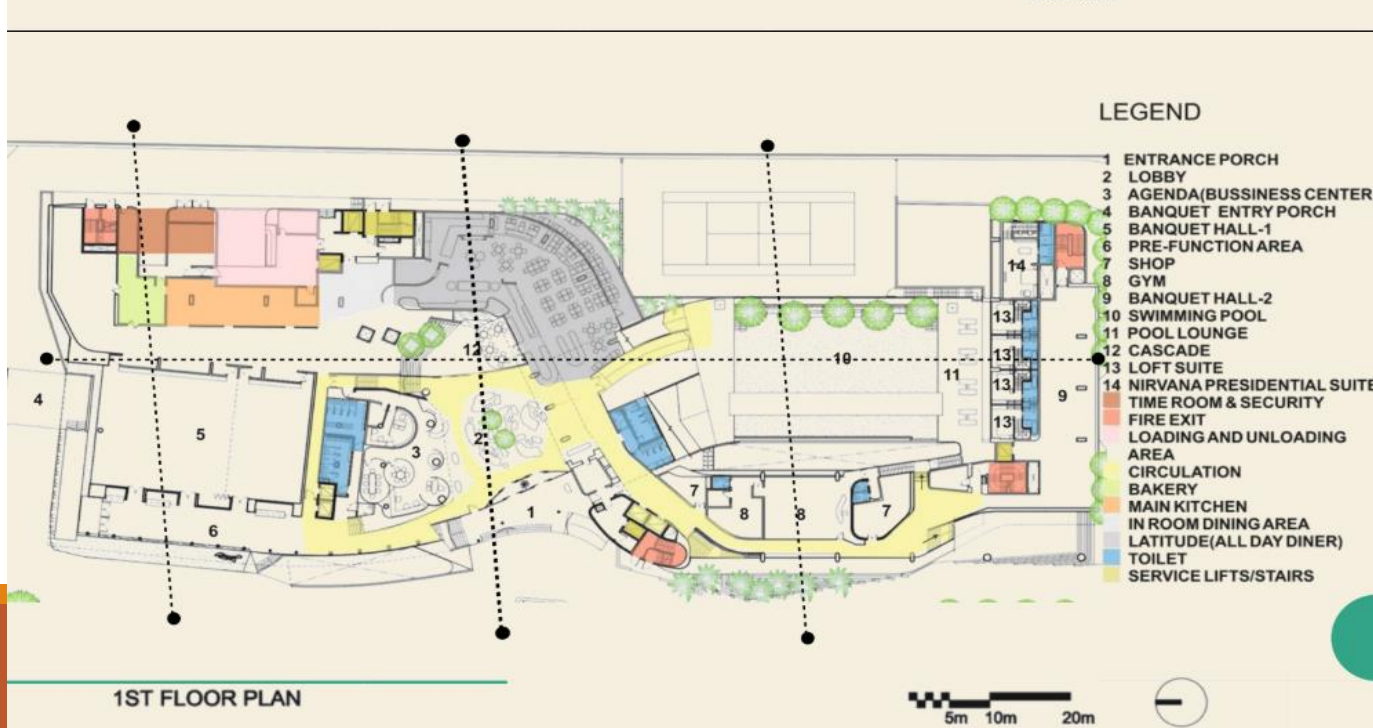
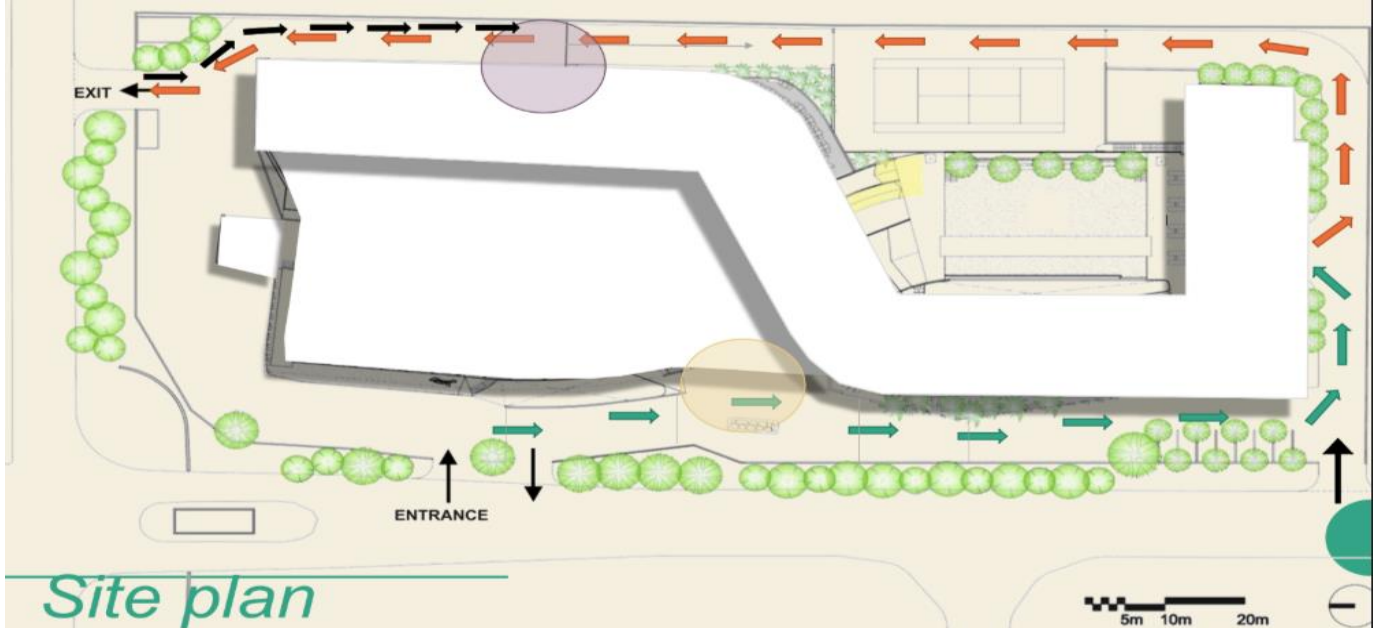


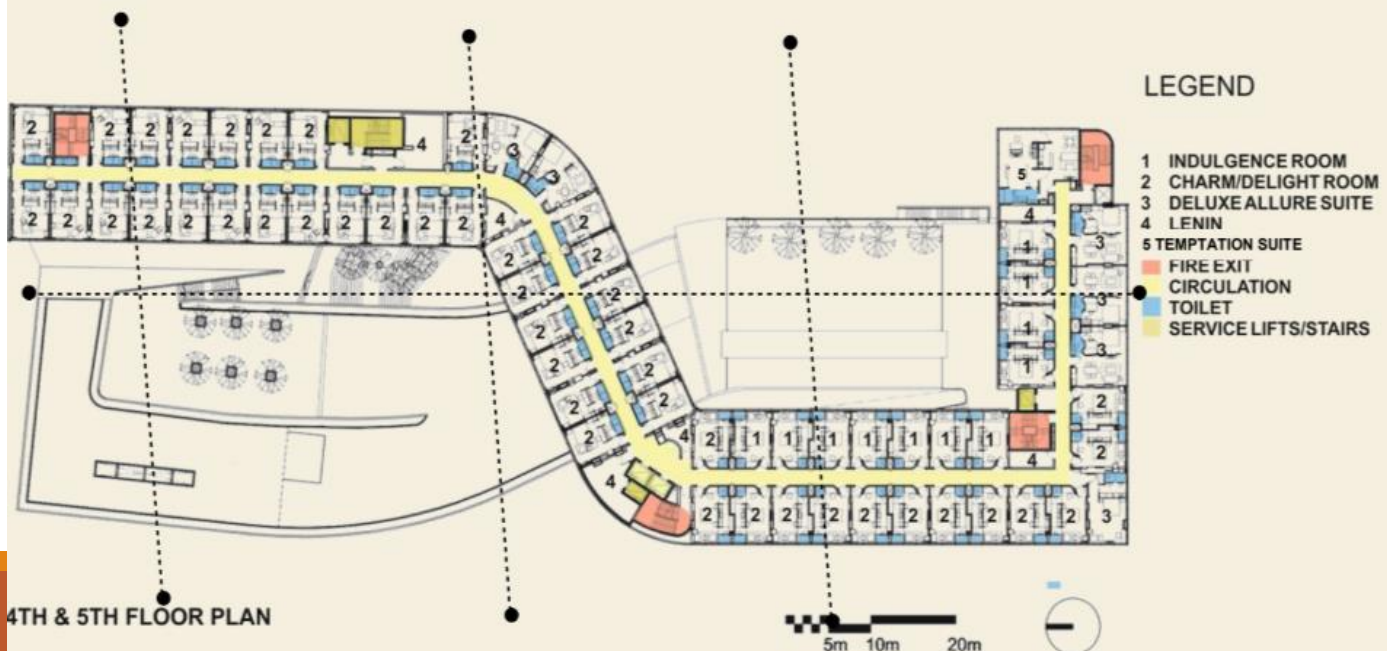
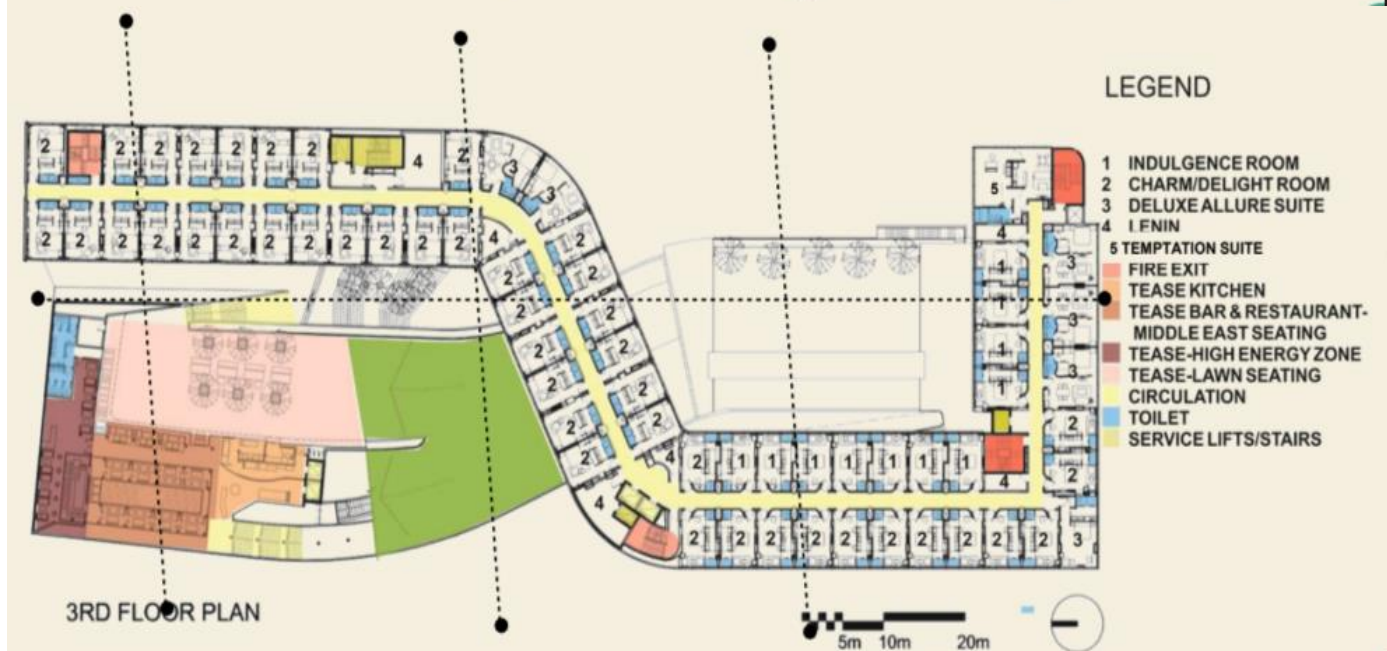
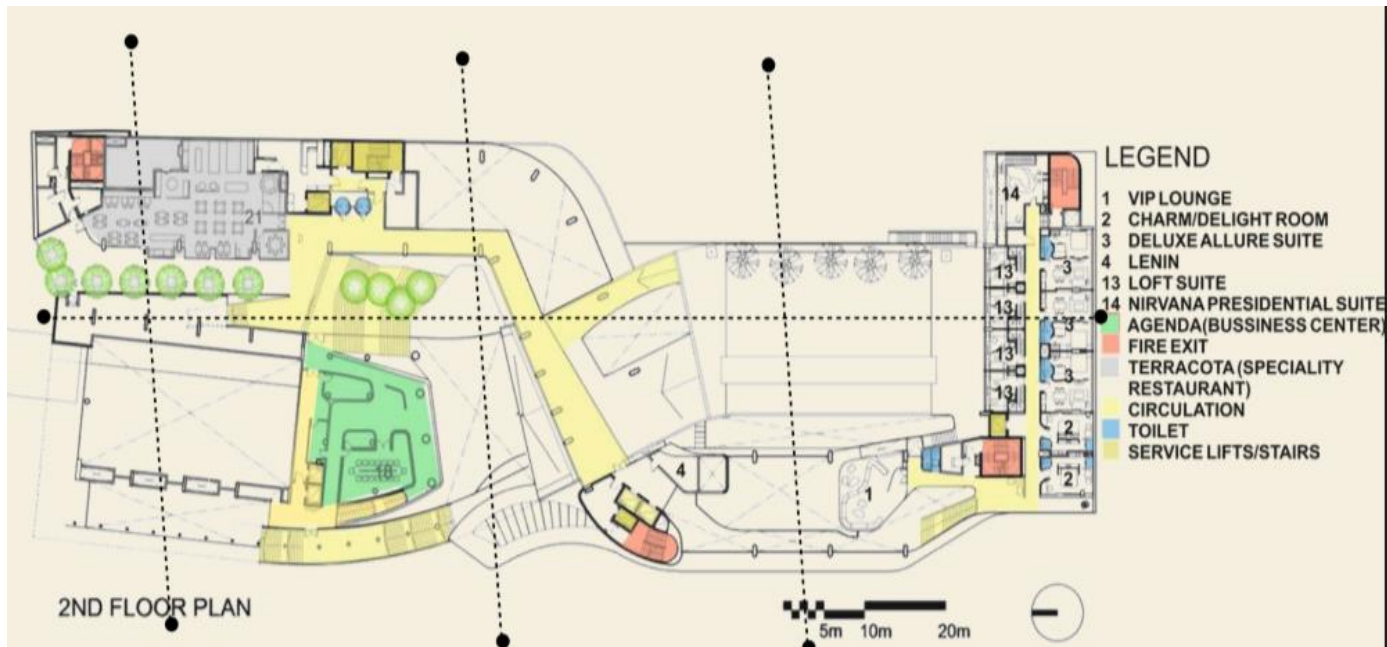
LOCATION: AS A PART OF THE IT PARK IN WHITEFIELD, BANGALORE

Concept

- *Landscaper over skyscraper – Mobius Strip
- *Designed as a flowing land-scraper that blends earth to sky
- *Spaces flow and connect to each other encouraging exchange and interaction.

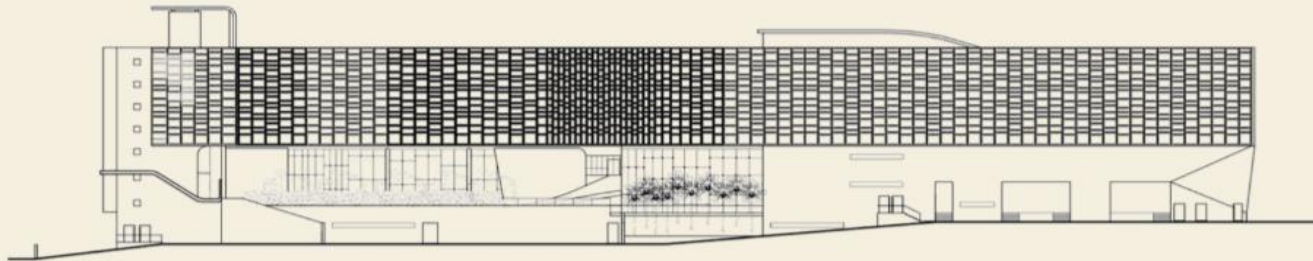








LONG SECTION THROUGH POOL & GREEN TERRACE

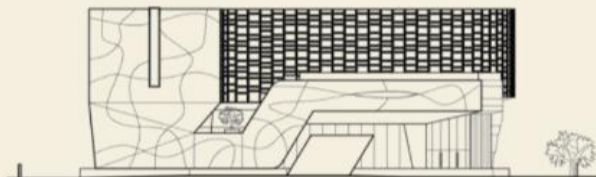


EAST ELEVATION

Elevations



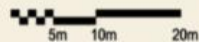
WEST ELEVATION



NORTH ELEVATION



SOUTH ELEVATION



Sections



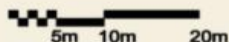
SECTION THROUGH LOBBY



SECTION THROUGH POOL



SECTION THROUGH BAR LOUNGE





Public Spaces



Recreation: Pool - Celsius



- Dimensions: length - 25.15 Meters; width - 10.75 Meters (1 m = 3.2 feet)
- Depth of the Pool - 1.2 Meters (approx. 4 feet)
- A separate KIDS pool: length - 25.15 Meters; width - 3 Meters; Depth - 0.18 to 0.65 Meters
- Temperature display
- Two watches displayed
- Water treatment plant with chlorination
- Timings: 6 am to 9 pm.

Recreation: Fitness Centre



- Open 24-hours, instructor available from 6:30 a.m. to 9:00 p.m.
- Equipped with Life Fitness circuit training and cardio machines
- Free weights
- Personal training
- Yoga & Aerobics in an exclusive area adjacent to the gym
- **THE EQUIPMENT INCLUDES**
 - 3 Treadmills
 - 1 Static cycle
 - 1 Elliptical bike
 - 1 EFX
 - 1 Stepper,
 - 7 Individual single station machines
 - 2 Flexible machines for anterior and posterior thigh muscles.
 - Flat bench
 - Incline and decline bench
 - Free weights

Recreation: Spa - Jiva



- 3 treatment suites. The suites have been innovatively designed around a soothing garden
 - Prithvi - 192 Sq ft
 - Vayu - 192 Sq ft
 - Akash - 192 Sq ft
- Relaxation room with two heated loungers
- Spa operational hours:
Wet areas - 07:00 hrs - 20:00 hrs
Treatments - 08:00 hrs - 20:00 hrs
- A beauty salon
- Separate steam and sauna room
- Experiential showers
- Changing rooms and personal amenities
- Long term fitness regime for regular guests

Recreation: Lounge - Rhythm



- You'll find Rhythm near the fitness centre.
- A chilled out space, where guests living in Indulgence rooms and suites are invited.
- This lounge presents a stunning view of the pool.
- Enjoy complimentary hi-tea or select alcohol from 6 PM to 10 PM.

Recreation: Boardroom - Agenda



- VGA Laptop Presentation Capabilities, Motorized Screen
- 63 inch LCD, Video and Audio Conferencing with session recording capabilities
- Video conferencing codec
- Polycom, 7 Boundary microphones on the table
- Tilt boxes with Lan Network, DVD Player
- Room Control (Lights, Volume, VC, Presentation switching, camera pan, recording, TV controls) all on one interface
- AC thermostat in room

Recreation: Business Centre -Oval



- Wi-Fi printer
- Comb binding
- lamination
- Photocopier
- Fax
- Internet access
- 2 PCs
- Night vision cameras
- Two meeting rooms for 8 and 6 people respectively.

Terracotta –Indian Restaurant

- Indian Specialty Restaurant
- Open interactive Kitchens
- Hours:
 - Lunch: 12pm – 2:45pm
 - Dinner: 7pm – 11.30pm

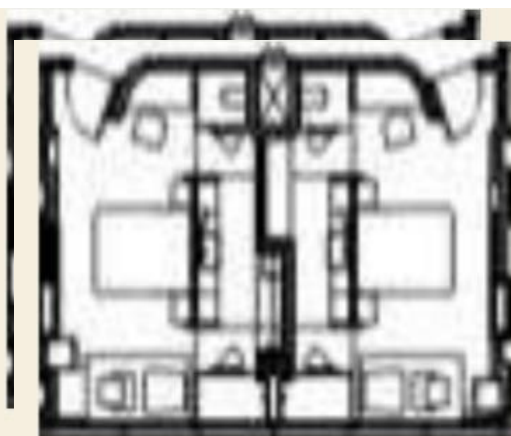


Tango 1 & 2– Ballrooms

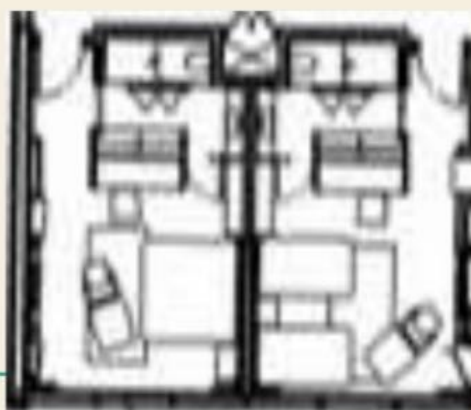
- Ballrooms Inbuilt AV features(Drop Down Screen, Drop Down Projector)
- Pillar less Halls
- Modular tables from Forbes - UK & Buzzer assistance
- Interface with complete room control(lights, volume, drop down screen, projector control)



Room Type	No of Rooms	Total Area	Bathroom Area
Superior Charm	89	327 sq. ft.	70 sq ft.
Deluxe Delight	48	327 sq. ft.	70 sq ft
Premium Indulgence	33	327 sq. ft.	70 sq ft
Deluxe Allure Suite	21	447 sq. ft.	62 sq.ft
Temptation Suite	3	770 sq. ft.	75 sq ft.
Loft Suite	4	925 sq. ft.	58 sq ft
Nirvana - The Presidential Suite	1	970 sq. ft.	81 sq ft



TYPE 1



TYPE 2



- Room size- 327 sq ft
- Ergonomically designed study table and chair
- Television - 32" LCD TV screen with home theatre system and surround sound to personalize your entertainment
- Internet Protocol telephone
- Bathrooms with shower cubicles (rain shower) and toilet area
- Bath amenities are Forest Essentials made from natural ingredients
- 100% cotton robes
- Cotton towels
- Wall-mounted makeup mirror, and hair drier
- Electronic safe
- Complimentary personal tea/coffee makers, mineral water & newspapers.
- Use of pool, fitness centre and wet areas of the Jiva spa
- Treat Yourself cabinet with a selection of drinks, snacks, chocolate treats and beverages (charge applies)
- Rest Easy menu with choice of pillows
- Yoga kit, aromatic diffuser on request
- 24-hour in room dining
- Housekeeping service twice daily - morning cleaning and evening turndown
- Rollaway beds and cribs available on request.



TYPE 1



TYPE 2



- Deluxe Allure Suite - 447 sq ft
- Wifi services for resident guests (terms and conditions apply)
 - * Basic access - complimentary
 - * Premium access - at a nominal charge
- Access to Rhythm Lounge
- SPA voucher worth Rs. 500/- per stay (To be used against treatments only)
- Happy Hours at the Rhythm Lounge
- Complimentary 24 Hr Wifi at Rhythm Lounge
- Complimentary 2 hours usage of Meeting Rooms Agenda/Oval (On availability)
- Complimentary Tea/Coffee and Cookies at Rhythm lounge during operating hours
- Complimentary pressing
- All the Services provided for Charm and Delight

Temptation Suite

- Premium Temptation Suite - 770 sq. ft
- All Services Provided for Loft Suite
- Double level Room
- Access from Upper level



FACILITIES PROVIDED

ESSENTIALS

Babysitting
Car hire service
Currency exchange
Doctor on call
24-hour laundry/dry cleaning
Postal/parcel services
Travel and tours desk
Airport and railway transfers
Shoeshine
Valet to assist with packing and unpacking

LEISURE SERVICES

24-hour in-room dining
Jiva spa
On-demand video and music
I-Radio
Beauty salon
Fitness centre
Cycling
Outdoor swimming pool
Choice of music in-car CDs
Fitness centre
Yoga and Aerobics

CONCIERGE SERVICES

Car rentals
Sightseeing tours
Special services such as floral arrangements
Shopping guidance

WELLNESS AMENITIES

Steam and sauna facilities
Unisex Saloon
Three Aromatherapy rooms
Relaxation Lounge
Outdoor Pool
Gym

ESSENTIAL SERVICES

Babysitting
Car hire service
Currency exchange
Doctor-on-call
24-hour laundry/Dry cleaning
Postal/Parcel services
Travel and tours desk
Airport and railway transfers
Shoeshine
Valet to assist with packing and unpacking

PET AMENITIES & SERVICES

Pet Food Bowls
Contacts of Veterinary Doctors
Pet Saloons & Grooming Services
"Pet in Room" Signage for rooms
Pet Menu
Pet Bed/Blanket
Select Branded Pet Food (Like Pedigree)
Hotel Concierge to offer Pet walking services
Poop dispenser

BUSINESS SERVICES

Oval – the 24-hour Business Centre
High-speed internet access
Wi-Fi access with printing
Scanning services
Online stock information
Online world clock
Online world weather
Information kiosk in the Lobby
Cellular phone in car with one-touch key for
ASK services
Facsimile
Photocopying
Secretarial services
Laptops on hire
Mobile phones; SIM cards on hire
Portable printers on hire
Translation/interpretation services
Video-conferencing facilities
Webcast facility
Workstations
Express check-in and check-out

Plants and Machinery

- Screw Chillers – 250 Tr X 03 No's – Kirloskar
- Dg Set's – 750 Kva X 02 No's – Cummins
- Transformers – 1000 Kva X 02 No's
- Hot Water Boilers – 2 Lacs K. Calories Per Hour
- 10 Kl Per Hour – Ro Plant For Water Treatment
- Sewage Treatment Plant – 200 Kl Per Day

Water usage

- Basement – 3 tanks
- Roof – 7 tanks
- 150L/C/D
- 9 kitchens – 1000L/hr
- Total usage – 48000 KL/day

Awards and Certifications

Certifications

- Certified for ISO 22000 Valid TILL 2017
- Food handlers test / Hygiene audits by Diversey
- Earth check Gold certification
- Certificate of excellence through trip advisor

Awards and Accolades

- Leaf Design awards for the best commercial building World Wide 2012
- Singapore President's Design award for Hotel Design
- Travel and Leisure Award 2011- Top 2 Hotels in India,
- Best in Bangalore for Women Business Traveler
- Today's Traveler Award for Best New Age Service Design in Hospitality 2011
- HA+D Award for Design Excellence in Hotel Architecture 2010
- Building of the year (SIA) Architectural Design Awards 2011
- Architecture Design Award , Singapore Institute of Architects Awards
- Interiors Award Commercial Projects (SIA) |Design S, Push Showcase, Special Mention 2010
- IAD Best Architect , Hospitality 2009
- IAD best Interior designer 2009
- Trip Advisor top 10 trendiest hotels 2012|

LITERATURE STUDY:- 2

HOTEL LE MERIDIEN, DELHI

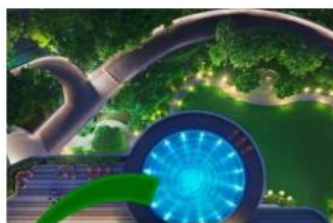




ENTRANCE POARCH



ENTRANCE POARCH



GARDEN VIEW



COMMERCIAL BUILDING



SURFACE PARKING



SITE PLAN

SERVICE ENTRY



RESIDENSIAL BLOC



SITE ANALYSIS

- SITE AREA IS 4.29 ACRE
- NORTH IS ALREADY MARKED IN PICTURE.
- SITE IS SURROUNDED BY ROAD FROM TWO SIDES.

ZONING

ZONING IS DIVIDED INTO THREE PARTS-

- BUILDING BLOCK
- GREEN AREA
- PARKING

BUILDING BLOCK

- RESIDENSIAL
- COMMERCIAL



SITE PLAN



BUILDING BLOCK
TOTAL BULT UP
AREA 18700 SQ M



GREEN AREA
40% GREEN AREA IS
PROVIDED.



PARKING
300 BASEMENT
PARKING(CAR)
30 SURFACE
PARKING(BUS /
OBI-VAN).

N

LOUNGE:

- THE ATRIUM IS 67 METRES HIGH THE SHOPS AND RESTAURANTS ARE PLANNED AROUND THIS CENTRAL ATRIUM
- CORRIDORS LINED WITH ROOMS ALSO LOOK IN, PARTICIPATING IN THE TOTAL SCHEME.



ELEVATORS

- THERE ARE TOTAL 23 FLOORS WHICH INCLUDE BASEMENT AND TERRACE LEVELS.
- 4 SERVICE ELEVATORS HAVING 20 PERSON CAPACITY COVERING BETWEEN -2 LEVEL (ROOM SERVICE) TO 20TH FLOOR.
- 2 COFFEE SHOP KITCHEN ELEVATORS HAVING 20 PERSON CAPACITY, OPERATING BETWEEN -2 TO 2 FL.



GUEST ROOMS:

SPACIOUS ROOMS OPENING INTO THE ATRIUM LOBBY, DINING RESTAURANTS AND EXCELLENT LEISURE FACILITIES MINGLE THE ELEGANT STYLE OF FRANCE WITH WARM HOSPITALITY OF INDIA.



GUEST ROOMS:

DELUXE ROOMS 107
PREMIUM ROOMS 80
LE ROYAL CLUB ROOMS 115
DELUXE SUITES 23
PREMIUM SUITES 20
LE ROYAL CLUB SUITES 6
LUXURY SUITES 6
PRESIDENTIAL SUITE 1
SUITE MEASUREMENTS VARY FROM 50-200 SQM. AND CONSISTS OF A LIVING ROOM AND ONE / TWO BEDROOMS.

RECREATION:

- TENNIS COURT,
- SWIMMING POOL
- HEALTH CLUB

CONFERENCE & BANQUET HALLS:

6 CONFERENCE HALLS WHICH CAN ACCOMMODATE ALL TYPES OF CONFERENCES, MEETINGS, SEMINARS, WORKSHOPS & PRODUCT BUNCHES-

THE NAPOLEAN HALL (1066 SQ.M.)

IT CAN ACCOMMODATE 1000 PAX FOR RECEPTION AND 550 PAX FOR SIT-DOWN DINNER WITH A DANCE FLOOR. THIS HALL CAN BE DIVIDED IF REQUIRED, BY A SOUND PROOF PARTITION GIVING TWO HALLS.

RASINA HALL (234 SQ.M)

THIS HALL CAN ACCOMMODATE 200 PAX FOR RECEPTION AND 100 PAX FOR SIT-DOWN DINNER

WINDSOR HALL (232 SQ.M.)

IT IS A UNIQUE BANQUET HALL WITH GRANITE, GLASS AND MARBLE AND CAN ACCOMMODATE 200 PAX FOR RECEPTION AND SIT-DOWN DINNER FOR 100 PAX .

BARS AND RESTAURANTS

LA BRASSERIE FOR 144 GUEST:

24-HOUR COFFEE SHOP OFFERS A LA CARTE LUNCH AND AN ELABORATE BUFFET FOR BREAKFAST AND DINNER. LA BRASSERIE ALSO OFFERS A VARIETY OF INDIAN, EUROPEAN AND ASIAN CUISINES.

LA PLAZA FOR 40 GUEST

A WIDE RANGE OF SANDWICHES, AND COOKIES AVAILABLE IN THE ATRIUM TEA LOUNGE.

GOLDEN PHOENIX FOR 84 GUEST

ONE OF THE CITY'S MOST POPULAR RESTAURANTS SERVING SZECHWAN AND CANTONESE CUISINE.

PAKWAN FOR 108 GUEST

WITH AN ETHNIC INDIAN AMBIENCE, THE RESTAURANT SPECIALIZES IN NORTH-WEST FRONTIER CUISINE AND HAS A PERFECT SETTING WITH LIVE GHAZALS.

LE BELVEDERE FOR 84 GUEST: ROOF TOP RESTAURANT AND NIGHT CLUB

HENRI BAR: ROOF TOP BAR

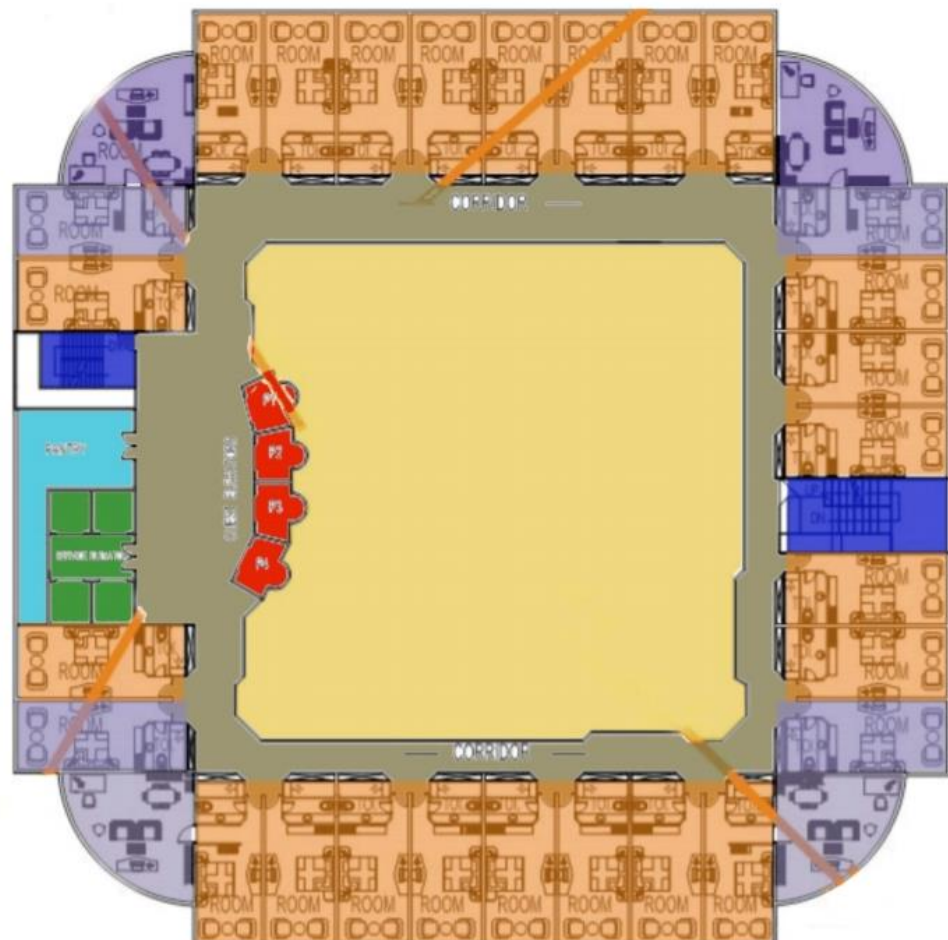
DJ'S: DISCOTHEQUE AT BANQUET FLOOR



TYPICAL FLOOR

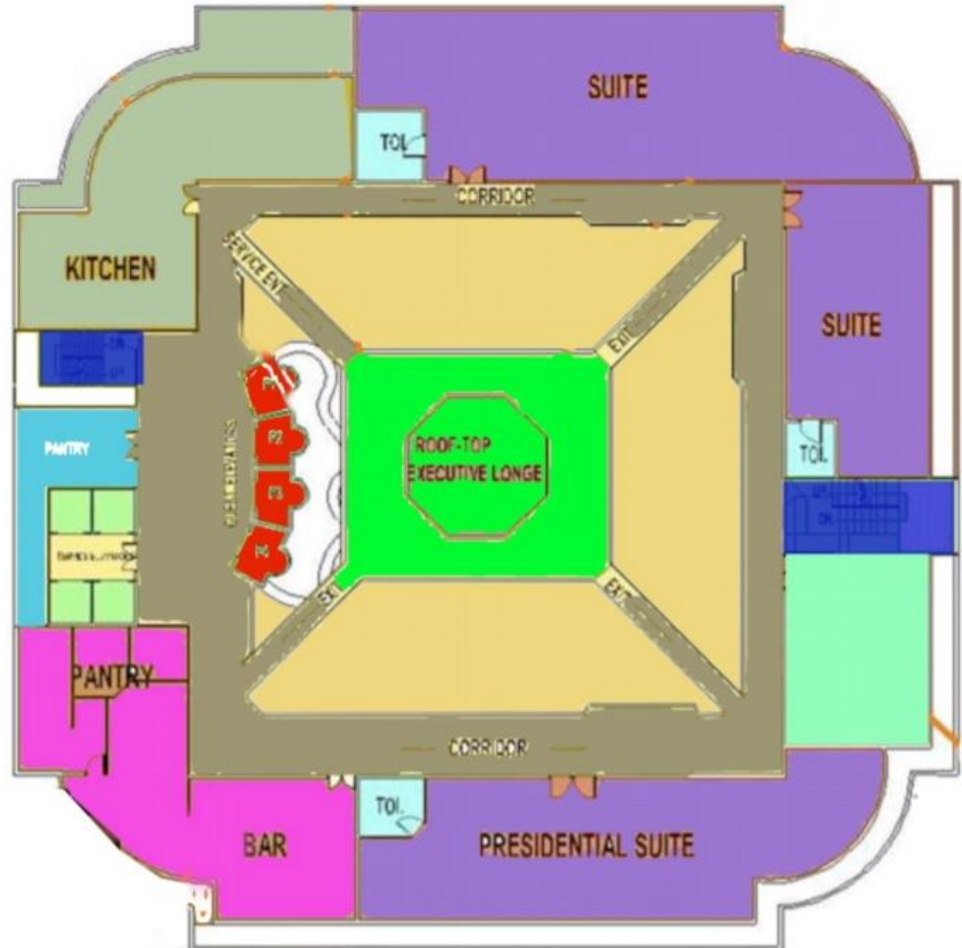
5th FLOOR TO 12th FLOOR

- ROOMS AND SUITES
- 2 FIRE EXIT STAIR CASE
- 4 GUEST LIFTS
- 4 SERVICE LIFT



TWENTIETH FLOOR

- PRESIDENTIAL SUITES,
- SUITES
- 1 BAR,
- 2 RESTAURANTS



TYPICAL FLOOR

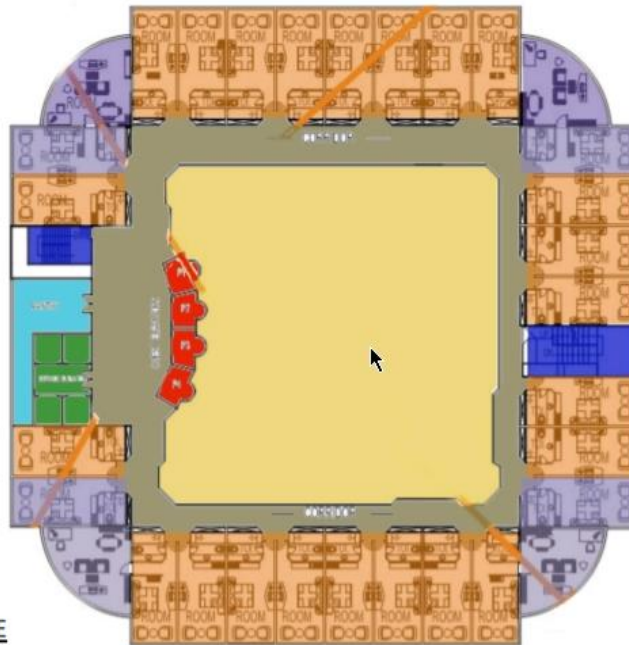
5th FLOOR TO 12th FLOOR



LIFT LOBBY AREA



VIEW OF ATRIUM SHOWING
CAPSULE LIFT
AND EXECUTIVE LOUNGE ABOVE



VIEW OF ATRIUM SHOWING



VIEW OF CORRIDOR



SUITE ROOM INTERIOR



DELUXE ROOM INTERIOR



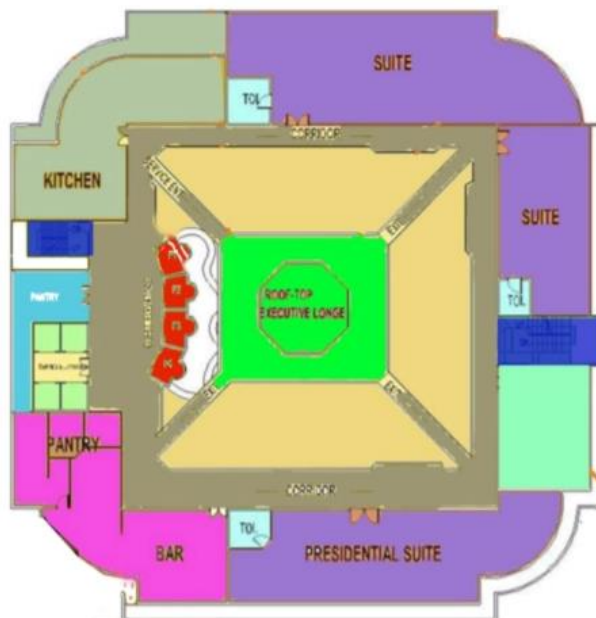
TWENTIETH FLOOR



VIEW OF SUITE



EXECUTIVE LOUNGE



VIEW OF SUITE



VIEW OF BAR



VIEW OF PRESIDENTIAL SUITE



SERVICES

WATER SUPPLY AND TREATMENT

Source: Bore Well

-total four types of water tanks are there

-There Is A Change In Water of Swimming Pool Every 6 Hours.

-Boiler: 3nos. 600 Kl/Hr Water Into Steam Which Is Supplied To Laundry And Kitchen.

-The Hotel Has Its Own System Of Filtration, Chlorination And Changing Of Water.

-Calorifier: Vessel Full Of Cold Water Steam Gets Condensed & Comes To The Boilers.

WATER DISPOSAL SYSTEM:

Sumps are provided in the service floor.

SEWAGE:

Include both liquid and solid waste.

Vertical shafts are provided for sewage.

Automatic sprinkler alarm panel

Separate entrance for garbage carrying vehicle is provided.

There are two types of garbage storage:

Dry garbage area: separate stores for crushed bottles, canes and dust bin disposal.

Wet garbage area: air -conditioned area at temperature of -9 degree Celsius.

AIR CONDITIONING:

The whole structure is centrally air conditioned

Fan coil units are provided in each room to control the quantity and quality of air.

A.C. plant room is on the second basement Height-6 meters.

Thumb rule-1 tonnage used for 27 meters cube of volume chilled water system.

Chilled water used as refrigerant

Plant room is centrally placed

a. No. of A.H.U.s- 5

b. Total load- 1500 ton

Chiller plant - 3 Nos. of 300 Ton each

All 3 are used in peak hours

13 degrees input and 8 degrees output

Average temperature - 8 °C

Colour code

m. Chilled water line - blue

n. Condenser line - green

¾ inch the pipes provided in all rooms.

In winters, steam from the boiler is used to heat water for air-conditioning.

Total area covered by the AC- 37790 sq. m.

Total capacity when fully used - 1100 tons

BOILERS:

The boiler room is provided next to the parking on the first basement having an area of 170 Sq.M.

At Le Meridien ,steam boilers are used to produce steam for heating water.

There are 3 steam boilers each with a capacity of 3.5 ton/ hour.

The hot water supply to the hotels is divided in 2 parts:

FIRE FIGHTING AND INSTALLATION:

- I. Fire hydrants with rubberized canvas for major fire are provided on each floors.
- II. Yard hydrants are provided around the building
- III. Automatic sprinkler system:

In case of fire when temperature rises above 68-79 °C, the quartzite head bursts installed at a distance of 3M centre to centre in the ceiling.

21 The image cannot be displayed. Your computer may not have enough memory to open the image, or the image may have been corrupted. Restart your computer, and then open the file again. If the red x still appears, you may have to delete the image and then insert it again.

22 The image cannot be displayed. Your computer may not have enough memory to open the image, or the image may have been corrupted. Restart your computer, and then open the file again. If the red x still appears, you may have to delete the image and then insert it again.

Manual call box indication
Public address system
Smoke Detectors
Fire Detection Panel and
Warning System:

23 The image cannot be displayed. Your computer may not have enough memory to open the image, or the image may have been corrupted. Restart your computer, and then open the file again. If the red x still appears, you may have to delete the image and then insert it again.



2 ATRIUM...



- THE ATRIUM IS 67 METERS HIGH WITH LIGHT TAKEN FROM THE SIDES.
- AREA OF THE ATRIUM IS NOT INCLUDE IN THE FLOOR AREA. AND IT GIVES BETTER VIEW FROM ALL FLOOR.

3 FAÇADE....

▪ FAÇADE TREATMENT ON THE EXTERIOR PRESENTS A VERY STABLE AND STRONG VISUAL EFFECT BY USE OF MIRRORED CURTAIN WALLS WHICH GO AGAINST THE CULTURAL STYLE OF DELHI, THE DESIGN IS CONCEIVED TO EXPRESS MATERIALS AND MOOD THAT BELONG TO THE FUTURISTIC ENVIRONMENT AND AGE.



4 STRUCTURE...

• THE HOTEL IS A 20 STOREY HIGH BUILDING THEREFORE THE STRUCTURE OF THE BUILDING IS THOUGHT-FULLY DESIGNED R.C.C. FRAMED STRUCTURE, WHICH HAS CREATED FLEXIBLE SPACES IN THE INTERIOR.



5 MATERIALS ...



USE OF VARIOUS MODERN DAY MATERIALS LIKE TINTED-GLASS, AND ALSO THE USE OF LOCAL FABRICS, REGIONAL CARPETS AND TRADITIONAL CRAFTS EMPHASIZING THE INDIAN CHARACTER OF THE HOTEL.

6 LANDSCAPE

INTERNAL SPACES HAVE BEEN EXTENSIVELY LANDSCAPED BY USE OF PLANTERS, SCULPTURES, SITTING AREAS ETC.

7 CIRCULATIONS...

VEHICULAR MOVEMENT IS RESTRICTED ONLY TO THE PERIPHERY OF THE SITE WITH ONLY PEDESTRIAN MOVEMENT ALLOWED INSIDE THE BLOCKS CREATING A VERY CLEAN ENVIRONMENT. PARKING HAS BEEN KEPT IN THE BASEMENT ALLOWING REST OF THE SITE TO BE LANDSCAPED.





ENTRANCE POARCH



ENTRANCE POARCH



GARDEN VIEW



COMMERCIAL BUILDING



SURFACE PARKING

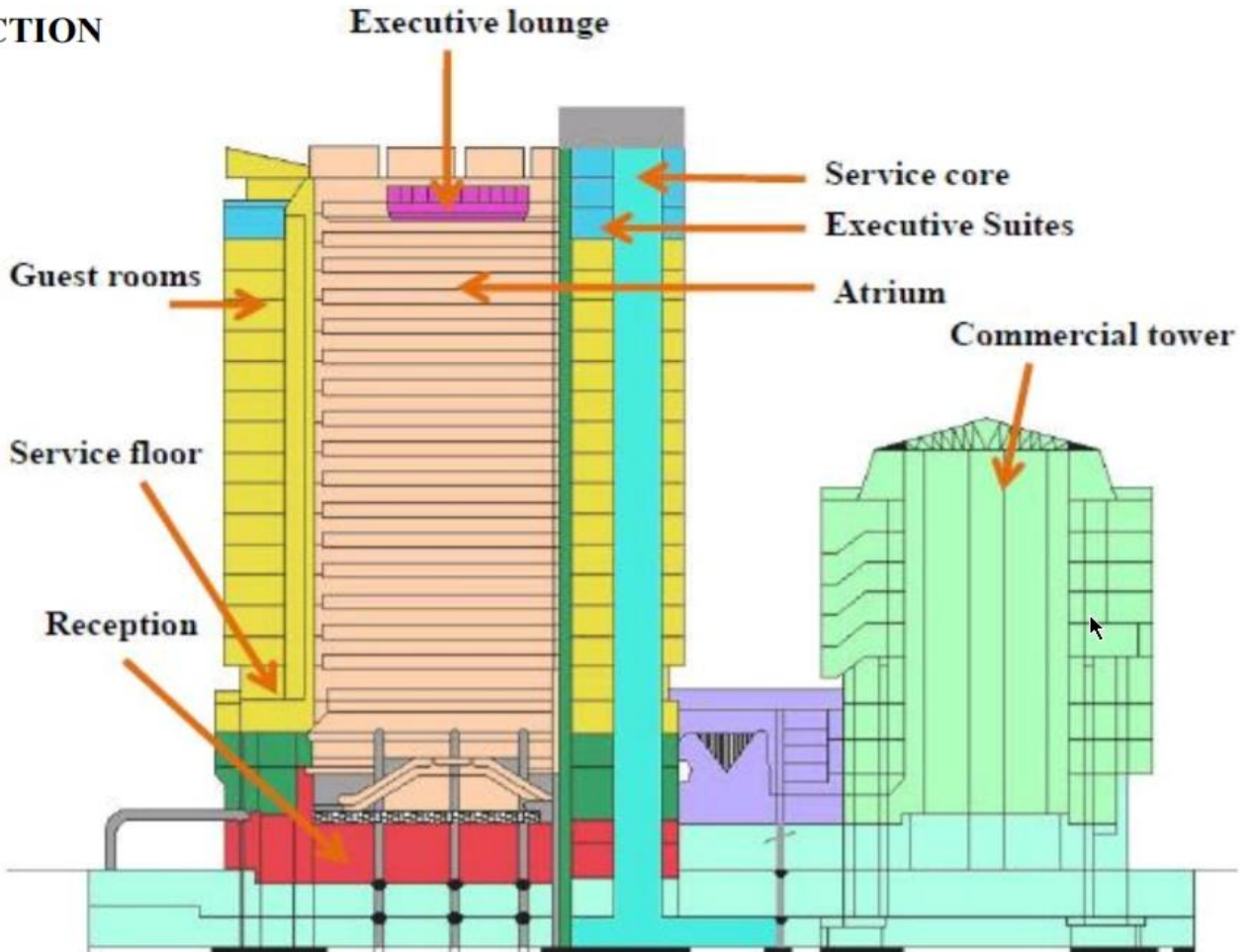


RESIDENSIAL BLOCK



SERVICE ENTRY

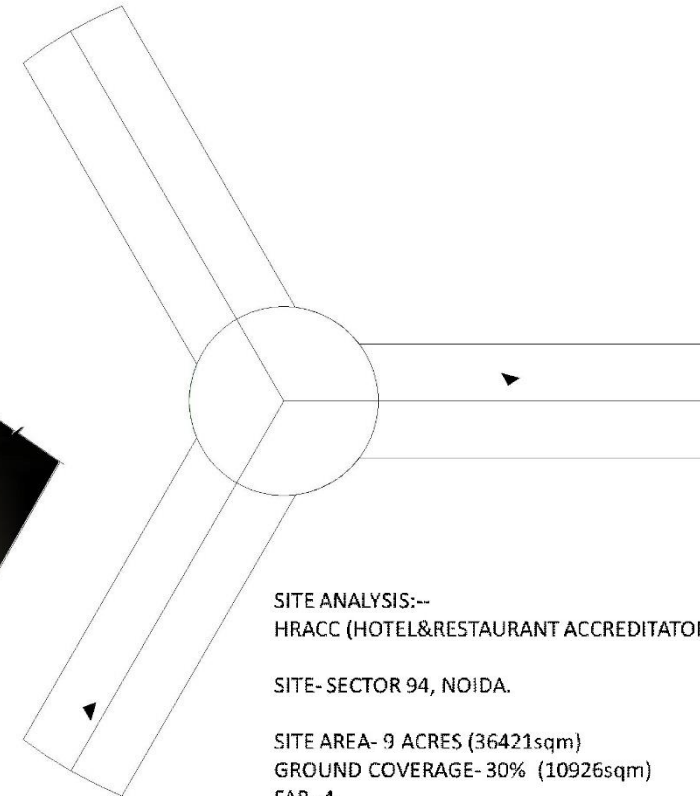
SECTION



SITE PLAN:



CONCEPT:



SITE ANALYSIS:--
HRACC (HOTEL&RESTAURANT ACCREDITATON COMMITTEE)

SITE- SECTOR 94, NOIDA.

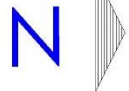
SITE AREA- 9 ACRES (36421sqm)
GROUND COVERAGE- 30% (10926sqm)
FAR- 4
BUILD UP AREA- 145684sqm

GROUND COVERAGE- 20% (7284sqm)
FAR- 4
BUILD UP AREA- 134316sqm
TOTAL NO. OF FLOOR- 12
BASEMENT- B1 + B2= 5m (DEPTH)
CARPET AREA- 94021sqm
(70% of build up area)

AT NOIDA
SEC-94

SITE PLAN & CONCEPT

SCALE- 1:100



GUIDED BY-
AR DIXIT SIR
AR ARPIT SIR

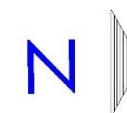
SUBMITTED BY-
SNEHA GUPTA
B.B.D.U LKO.

B.ARCH
5th YEAR
2019-20
1130101061.

5 STAR HOTEL AT NOIDA SEC-94

1st & 2nd FLOOR PLAN

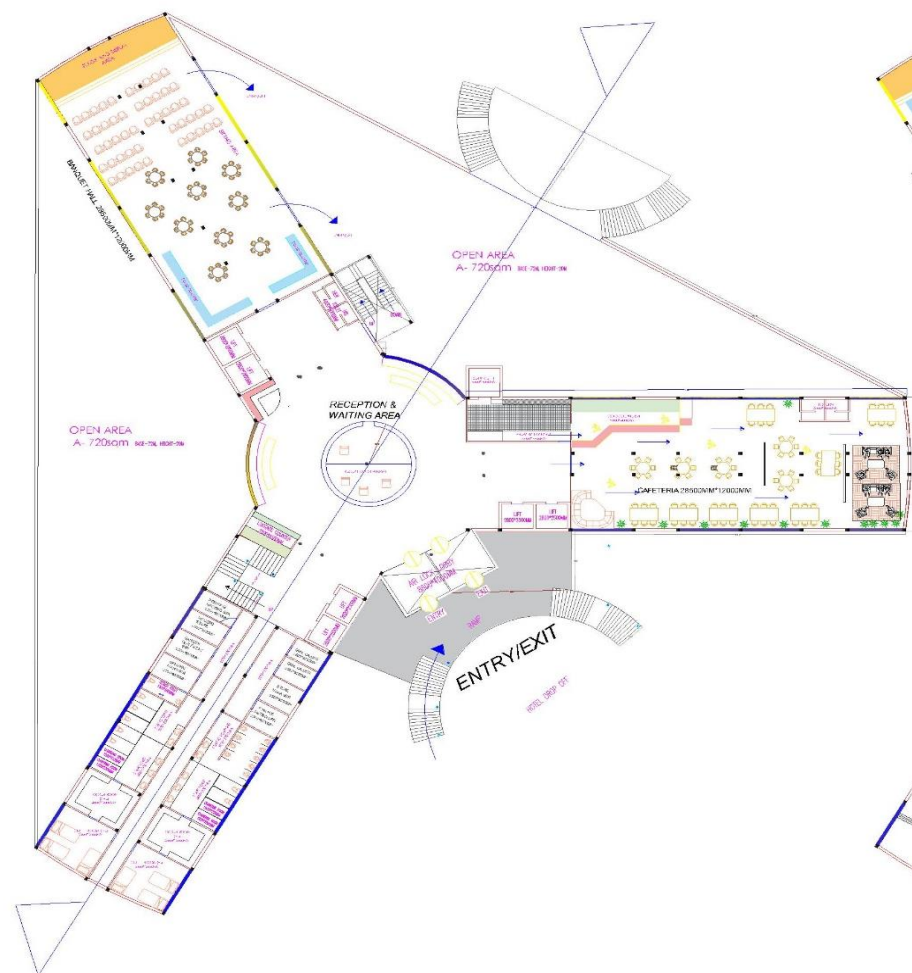
SCALE- 1:100



GUIDED BY-
AR DIXIT SIR
AR ARPIT SIR

SUBMITTED BY-
SNEHA GUPTA
B.B.D.U LKO.

B.ARCH
5th YEAR
2019-20
1130101061.



1st FLOOR PLAN

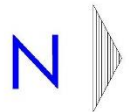


2nd FLOOR PLAN

5 STAR HOTEL AT NOIDA SEC-94

1st & 2nd FLOOR PLAN

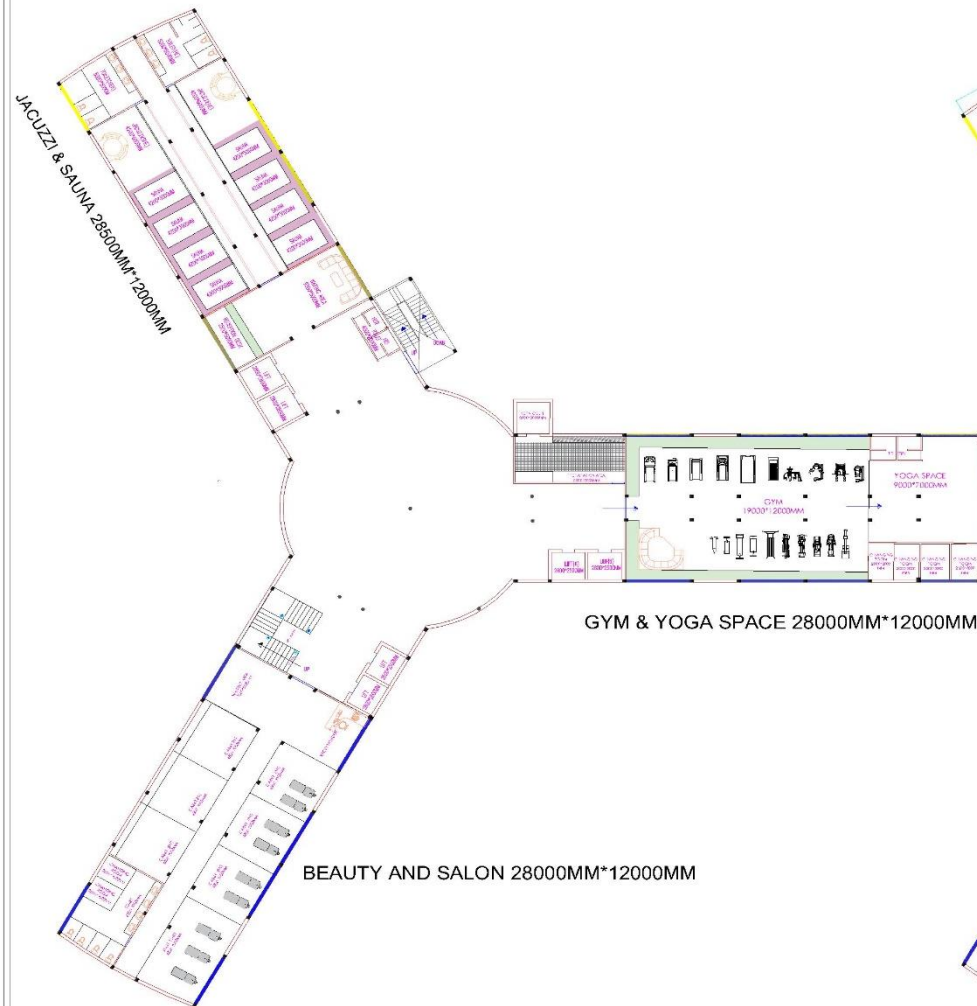
SCALE- 1:100



GUIDED BY-
AR DIXIT SIR
AR ARPIT SIR

SUBMITTED BY-
SNEHA GUPTA
B.B.D.U LKO.

B.ARCH
5th YEAR
2019-20
1130101061.



3rd FLOOR PLAN



4th FLOOR PLAN

5 STAR HOTEL AT NOIDA SEC-94

1st & 2nd FLOOR PLAN

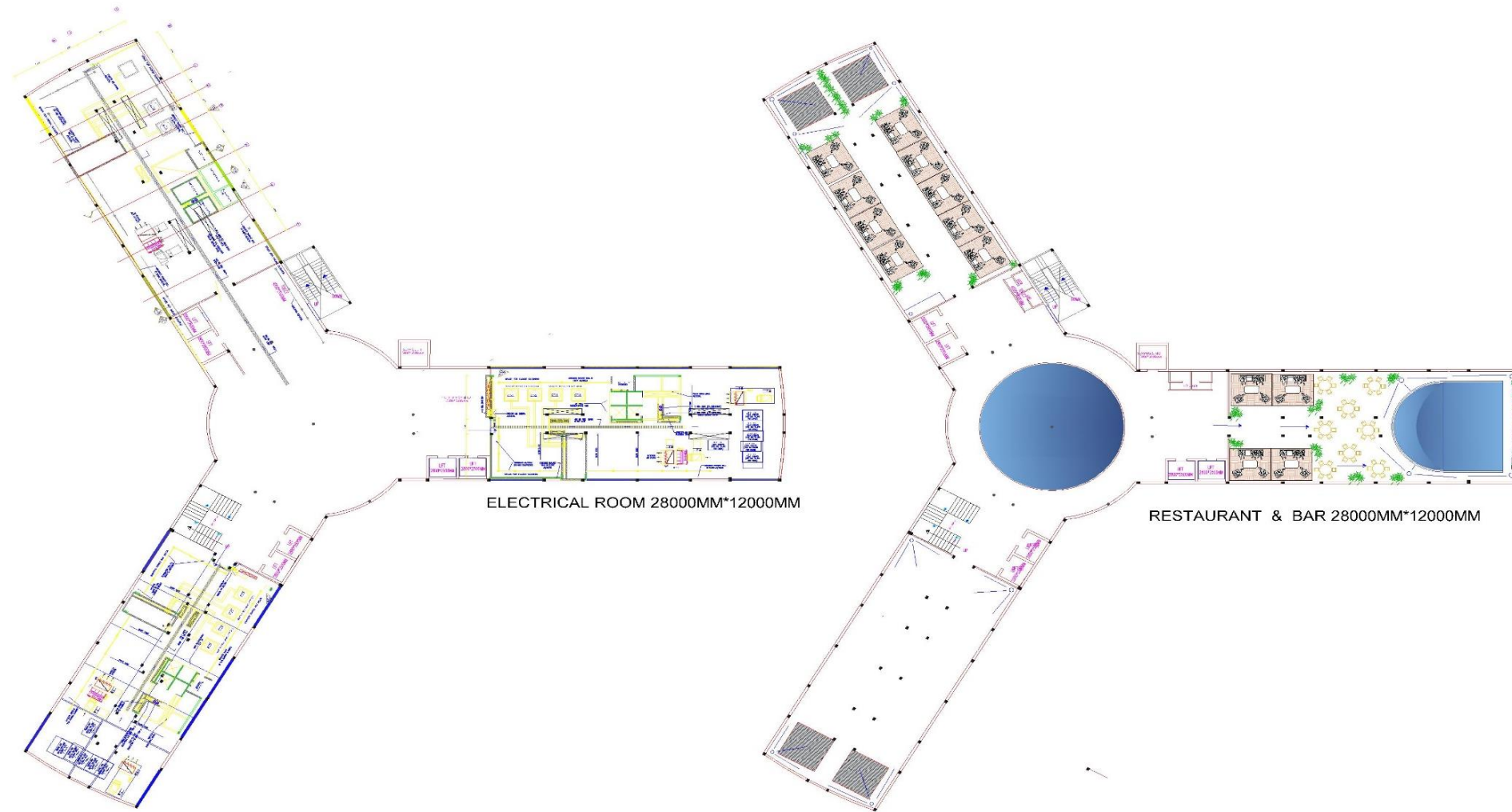
SCALE- 1:100



GUIDED BY-
AR DIXIT SIR
AR ARPIT SIR

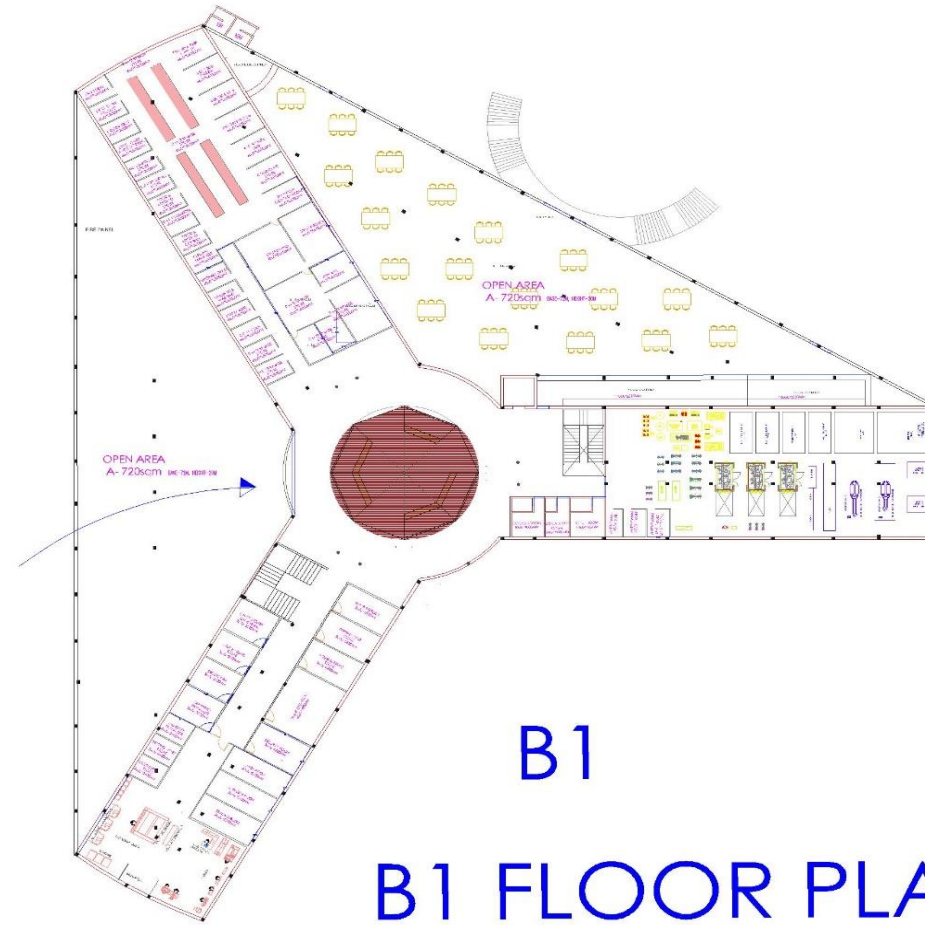
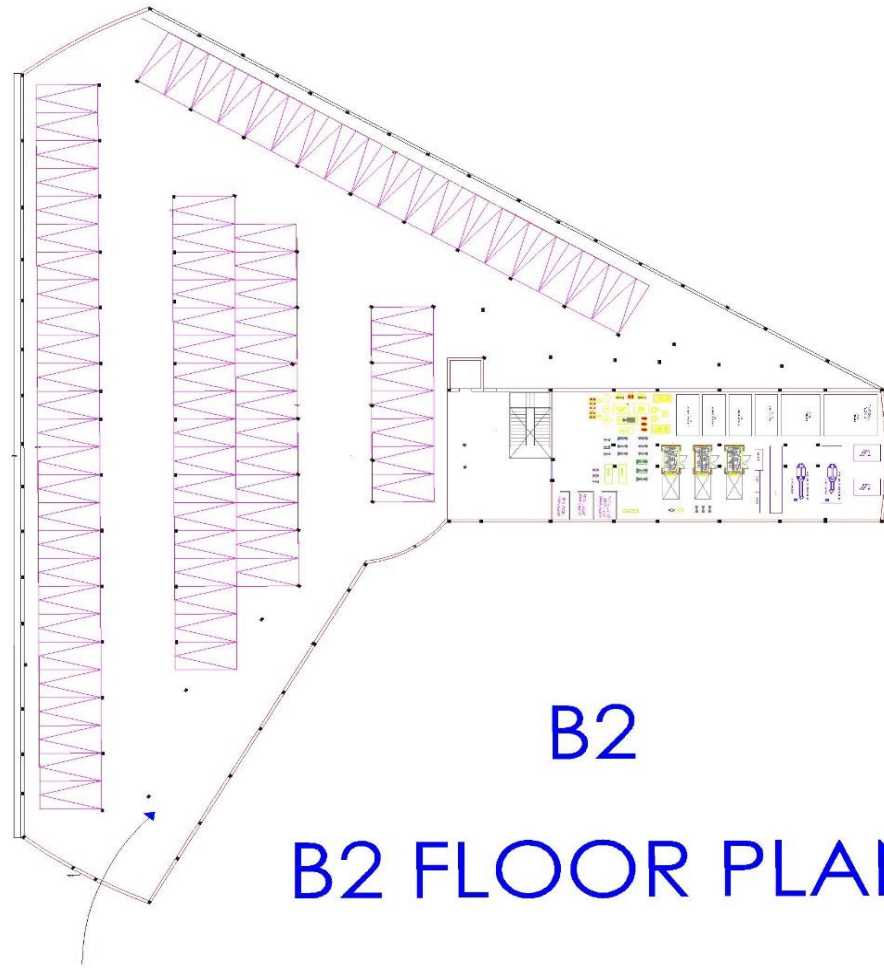
SUBMITTED BY-
SNEHA GUPTA
B.B.D.U LKO.

B.ARCH
5th YEAR
2019-20
1130101061.



SERVICE FLOOR

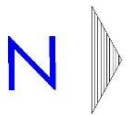
TARRACE PLAN



AT NOIDA
SEC-94

1st & 2nd FLOOR PLAN

SCALE- 1:100

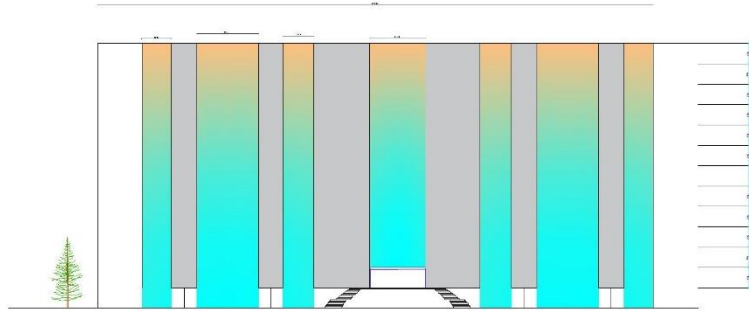


GUIDED BY-
AR DIXIT SIR
AR ARPIT SIR

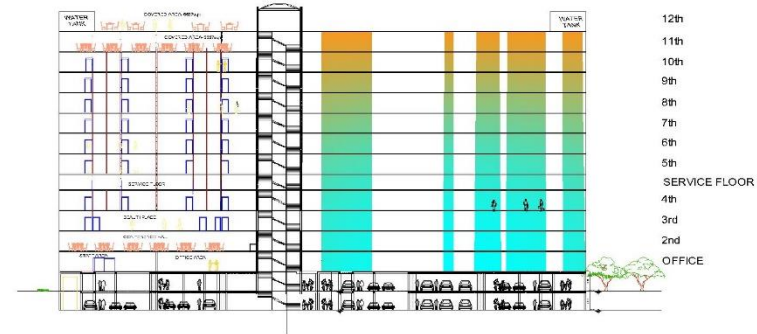
SUBMITTED BY-
SNEHA GUPTA
B.B.D.U LKO.

B.ARCH
5th YEAR
2019-20
1130101061.

ELEVATION



SECTION AA:



AT NOIDA
SEC-94

SITE PLAN & CONCEPT

SCALE- 1:100

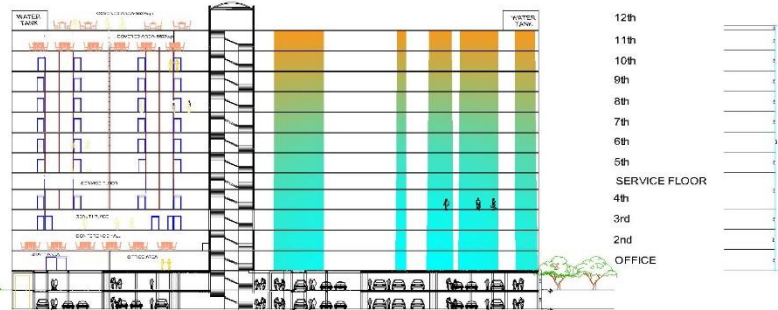


REQUIREMENTS TENTATIVE AREA NORMS/STANDARDS

ENTRANCE PORCH/LOBBY		
ENTRANCE PORCH	270 SQM	-
AIRLOCK LOBBY	21.2 SQM	1 % OF LOBBY AREA
MAIN LOBBY AND LOUNGE	468 SQM	1.1-1.4 SQM / ROOM
LUGGAGE ROOM	11 SQM	0.05 SQM / ROOM
BELL-MAN DESK	9 SQM	0.04 SQM / ROOM
RESTROOM (MALE)	25 SQM	(MIN LENGTH 1.05 MTR)
RESTROOM (FEMALE)	25 SQM	MIN. 25 SQM
RESTROOM (HANDICAPPED)	7.5 SQM	MIN. 20 SQM

ADMINISTRATION OFFICES (BACK HOUSE)		
GENERAL MANAGER'S OFFICE	9.5 SQM	9.5 SQM
DIRECTOR'S OFFICE	22.4 SQM	13.5 SQMT + 6.3 SQMT TOL
PRO OFFICE	9 SQM	7 SQM
RESTROOM	11 SQM	-
MEETING ROOM	25 SQM	MIN 10 PPL

GUEST ROOM'S		
DELUXE ROOM (DOUBLE BED)	35 SQM / 50 = 1750SQM	2.0 SQM
Ø KING SIZE BED ROOM	30 SQM	-
Ø TOILET	5 SQM	4.2 SQM
DELUXE ROOM (TWIN BED)	35 SQM / 25 = 875SQM	20 SQM
Ø KING SIZE BED ROOM	30 SQM	-
Ø TOILET	5 SQM	4.2 SQM
EXECUTIVE ROOM	44 SQM / 10 = 440SQM	27 SQM
Ø QUEEN SIZE BED ROOM	32 SQM	18 SQM
Ø TOILET	6 SQM	4.2 SQM
EXECUTIVE SUITE	50 SQM / 10 = 500SQM	-
Ø KING SIZE BED ROOM+LIVING	39 SQM	-
Ø TOILET+ DRESSING	11 SQM	5.7 SQM
PRESIDENTIAL SUITE (DUPLEX)	214SQM / 4 = 850SQM	100 SQM
Ø 2 KING SIZE BED ROOM+LIVING	165 SQM	-
Ø GYM	7.2 SQM	-
Ø KITCHEN + BAR COUNTER	16 SQM	-
Ø TOILET WITH JACUZZI+SAUNA-	26 SQM	-
ROOM FOR HANDICAPPED	47 SQM / 15 = 700SQM	30 SQM
Ø KING SIZE BED ROOM	40 SQM	25 SQM
Ø TOILET	7.5 SQM	5 SQM



ROYAL SUITE	85 SQM / 10 = 850SQM	80SQM
Ø KING SIZE BED ROOM+LIVING+	74 SQM	25 SQM
Ø TOILET+ DRESS	11 SQM	5 SQM
PREMIUM SUITE	355SQM / 10 = 350SQM	-
(SINGLE BEDED ROOMS)	-	-
PREMIUM ROOM	24 SQM / 15 = 360 SQM	-
RECREATIONAL AREA'S		
GYMNASIUM	155 SQM	0.66 SQM / ROOM
MEDITATION HALL	28 SQM	0.33 SQM / ROOM
LADIE'S PALOUR	28 SQM	0.23 SQM / ROOM
MENZ PARLOUR	28SQM	0.15 SQM / ROOM
SPA(M/F)	130 SQM	0.33 SQM / ROOM
SHOPPING ARCADE	663 SQM	0.36 SQM / ROOM
SWIMMING POOL+DECK	783 SQM	7.50 SQM / ROOM

GUEST ROOM'S		
DELUXE ROOM (DOUBLE BED)	35 SQM / 50 = 1750SQM	2.0 SQM
Ø KING SIZE BED ROOM	30 SQM	-
Ø TOILET	5 SQM	4.2 SQM
DELUXE ROOM (TWIN BED)	35 SQM / 25 = 875SQM	20 SQM
Ø KING SIZE BED ROOM	30 SQM	-
Ø TOILET	5 SQM	4.2 SQM
EXECUTIVE ROOM	44 SQM / 10 = 440SQM	27 SQM
Ø QUEEN SIZE BED ROOM	32 SQM	18 SQM
Ø TOILET	6 SQM	4.2 SQM
EXECUTIVE SUITE	50 SQM / 10 = 500SQM	-
Ø KING SIZE BED ROOM+LIVING	39 SQM	-
Ø TOILET+ DRESSING	11 SQM	5.7 SQM
PRESIDENTIAL SUITE (DUPLEX)	214SQM / 4 = 850SQM	100 SQM
Ø 2 KING SIZE BED ROOM+LIVING	165 SQM	-
Ø GYM	7.2 SQM	-
Ø KITCHEN + BAR COUNTER	16 SQM	-
Ø TOILET WITH JACUZZI+SAUNA-	26 SQM	-
ROOM FOR HANDICAPPED	47 SQM / 15 = 700SQM	30 SQM
Ø KING SIZE BED ROOM	40 SQM	25 SQM
Ø TOILET	7.5 SQM	5 SQM

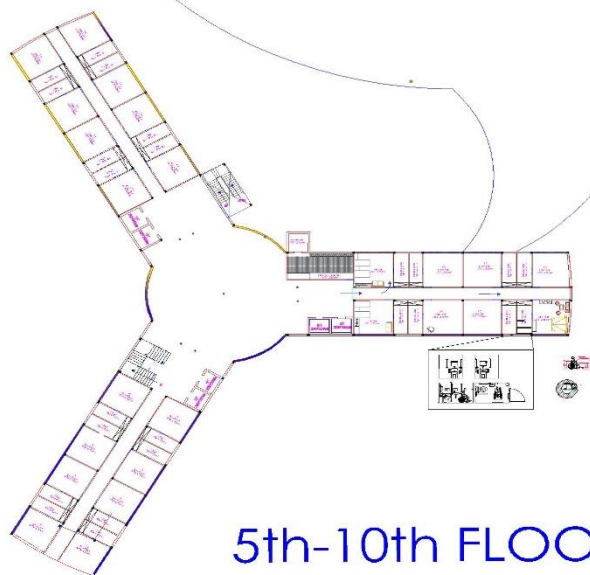
GUIDED BY-
AR DIXIT SIR
AR ARPIT SIR

SUBMITTED BY-
SNEHA GUPTA
B.B.D.U LKO.

B.ARCH
5th YEAR
2019-20
1130101061.



GUEST ROOM



5th-10th FLOOR
PLAN



11th FLOOR PLAN

BANQUET HALL		28000*12500MM	350sqm
CAFÉ		28000*12500MM	350sqm
STAFF ROOM		5000*5000MM	25sqm
STAFF TOILET		4800*5000MM	24sqm
HELPDESK		9000*5000MM	45sqm
PUBLIC LIFT		3000*3000MM	9sqm
SURVICE LIFT		4200*3200MM	13.44sqm
CAFÉ AREA FOOD COUNTER		9000*5000MM	45sqm
PUBLIC TOILET (INSIDE)		4100*2000MM	8.2sqm
EMERGENCY		7300*3500MM	25.55sqm
RECEPTION		RADIUS-4000MM	50.24sqm
BUSSINESS		28000*12500MM	350sqm
MULTI-CUISINE KITCHEN		16500*5000MM	82.5sqm
CONFERENCE		28000*12500MM	350sqm
PUBLIC STAIR		5800*4500MM	26.2sqm
CONRIDOR		12500*2000MM	250sqm
GYM & YOGA		28000*12500MM	350sqm
BEAUTI SALON		28000*12500MM	350sqm
SALON TOILET		8000*5000MM	40sqm
BEAUTI CABIN		5000*5000MM	25sqm
SAUNA CABIN		4200*3000MM	12.6sqm
SAUNA TOILET		4700*5000MM	23.5sqm
MEETING ROOM		28000*12500MM	350sqm
RESTAURANT & BAR PREPARATION		6000*5000MM	30sqm
COUNTER (RESTRO.)		1000*2000MM	2sqm
STAFF TOILET		4200*2000MM	8.4sqm
ADMIN BLOCK		5000*5000MM	25sqm
CABIN		5000*3000MM	15sqm
BASIC ROOM		5000*5000MM	25sqm
BASIC ROOM TOILET		2000*5000MM	10sqm
TOILET STAFF		2000*5000MM	10sqm
JUNIOR SUIT		7000*5000MM	35sqm
ROOM FOR DIFF. ABLE		5000*5000MM	25sqm
TOILET FOR DIFF. ABLE		2000*5000MM	10sqm
PRESIDENT ROOM		7000*5000MM	35sqm
DINING AREA		3800*7000MM	26.6sqm
GYM & YOGA		3400*7000MM	23.8sqm
KITCHEN		7000*5000MM	35sqm
STAFF ROOM		5000*5000MM	25sqm
GUARD ROOM		5000*5000MM	25sqm
DRAWING ROOM		5000*5000MM	25sqm
SECRETARY ROOM		5000*5000MM	25sqm
TOILET SECRETARY		5000*5000MM	35sqm
TOILET PRESIDENT		7000*5000MM	35sqm
WATER TANK	OVERHEAD	25KL*2	
RESERVE TANK		30KL*2	
PARKING B2		84 FOUR WHEELERS	
POOL DEPTH FOR CHILD			
POOL DEPTH FOR ADULTS			
FOOD CORNER FOR POOL PARTY GUIST		600sqm	