

THESIS REPORT
ON
**COWORKING OFFICE SPACE,
GURUGRAM,HARYANA**

A THESIS SUBMITTED IN PARTIAL FULFILLMENT OF THE
REQUIREMENT FOR THE DEGREE OF:

**BACHELOR OF INTERIOR DESIGN
BY**

**(JAY BATHAM)
(ROLL NO. 1210107009)**

THESIS GUIDE
()
SESSION 2024-25



**TO THE
SCHOOL OF ARCHITECTURE AND PLANNING
BABU BANARASI DAS UNIVERSITY
LUCKNOW.**

CERTIFICATE

I hereby recommend that the thesis entitled “**COWORKING OFFICE SPACE, GURUGRAM,HARYANA** “under the supervision, is the bonafide work of the students and can be accepted as partial fulfillment of the requirement for the degree of Bachelor’s degree in Architecture, School of Architecture & Planning, BBDU, Lucknow.

Prof. Sangeeta Sharma
Head

Prof. Sumit Wadhera
Dean

Recommendation

Accepted
Not Accepted

External Examiner

External Examiner

**BABU BANARASI DAS UNIVERSITY, LUCKNOW
(U.P.).**

Certificate of thesis submission for evaluation

1. Name : JAY BATHAM
2. Roll No. : 1210107009
3. Thesis Title : COWORKING OFFICE SPACE, GURUGRAM,HARYANA
4. Degree for which the thesis is submitted : BACHELOR OF INTERIOR DESIGN
5. Faculty of University to which the thesis is submitted: Yes / No
6. Thesis preparation guide was referred to for preparing the thesis. Yes / No
7. Specification regarding thesis format have been closely followed. Yes / No
8. The content of the thesis have been organized based on the guidelines. Yes / No
9. The thesis has been prepared without resorting to plagiarism Yes / No
10. All the sources used have been cited appropriately Yes / No
11. The thesis has not been submitted elsewhere for a degree. Yes / No
12. Submitted 3 hard bound copied plus one CD Yes / No

(Signature of the supervisor)

Name:

(Signature of the Candidate)

Name:

Roll No.:

ACKNOWLEDGEMENT

I acknowledge my sincere to my guide who guided me through active participation and discussions and gave kind cooperation throughout the process. My sincere thanks to our Thesis coordinator Mrs.**Ar. VARSHA VERMA** for her cooperation and understanding at every stage of the study, which gave my study a new direction and make it more meaningful. I am thankful to our Dean, **Prof. Ar. Sumit Wadhera** for his cooperation and invaluable support. I am also thankful to the persons concerned to my studies for their cooperation and devoting their valuable time for discussing with me... Above all, thanks to my friends for their sincere help throughout, without which this report would not have been in its present shape. Last but not the least I thank my parents for their forever support and blessings.

JAY BATHAM
1210107009

TABLE OF CONTENT

S.NO.	TITLE
1.	INTRODUCTION
2.	SYNOPSIS
	1. INTRODUCTION
	2. HISTORY AND BACKGROUND
	3. NEED OF THIS TOPIC
	4. AIM AND OBJECTIVE & SCOPE
	5. MAJOR REQUIREMENT
	6. LIMITATION
	7. SITE IDENTIFICATION
	8. S.W.O.T
3.	SITE ANALYSIS
	1. INTRODUCTION
	2. LOCATION
	3. SITE PLAN
	4. CONECTIVITY
	5. CLIMATE
4.	LITERATURE STUDY
5.	CASE STUDY
6.	CONCEPT
7.	DRAWINGS
	1. FURNITURE LAYOUT PLAN
	2. REFLECTED CEILING PLAN
	3. FLOORING RENDER PLAN
	4. ELEVATIONS
8.	1. FURNITURE DETAIL
	2. ELECTRICAL AND HVAC
	3. VIEWS

INTRODUCTION

- ❑ Co-working spaces are shared working environments designed for freelancers, startups, and professionals from various fields. They provide flexible desk arrangements, common utilities, and collaborative areas within one unified space.
- ❑ In the evolving landscape of work culture, co-working spaces have emerged as dynamic and flexible alternatives to conventional office environments. These spaces are designed to support a wide range of users—freelancers, startups, creative professionals, and remote teams—by offering shared workstations, collaborative zones, and informal lounges within a single interior setting. The co-working model encourages innovation, communication, and community through its spatial openness and adaptable layouts.
- ❑ Interior design plays a crucial role in shaping the experience and functionality of co-working environments. Elements such as lighting, acoustics, zoning, and material selection directly affect productivity, comfort, and the brand identity of a space. With a focus on flexibility, aesthetics, and well-being, this thesis explores the design of a modern industrial-style co-working office on the 12th floor of Vatika Business Park, Sohna Road, Gurugram. The project addresses the spatial, functional, and psychological needs of professionals in a shared working atmosphere.

HISTORY AND BACKGROUND

- ❑ The concept of co-working originated in the early 2000s to provide freelancers and independent professionals with a flexible, collaborative alternative to traditional offices. Over the past two decades, it has grown into a global movement, especially in urban centers where real estate costs and hybrid work culture demand adaptable workspaces. In India, cities like Bengaluru, Gurugram, and Mumbai have embraced co-working as a mainstream model. These spaces now cater to a wide range of users—from startups and SMEs to digital nomads—offering a professional environment enhanced by good design. The growth of this typology has made interior design a critical tool in defining identity, comfort, and user experience.

NEED OF TOPIC ?

- ❑ In today's rapidly evolving professional landscape, traditional office structures are becoming less relevant for independent workers, startups, and hybrid teams. The rising demand for adaptable, affordable, and collaborative environments has made co-working spaces a preferred choice. These spaces offer flexibility in time, usage, and interaction, which is especially important in a post-pandemic world that has normalized remote and hybrid work models.
- ❑ Interior design plays a vital role in shaping the functionality and atmosphere of co-working spaces. Good design supports user comfort, productivity, and mental well-being through thoughtful zoning, ergonomic furniture, lighting, and acoustics. It allows users to experience a sense of identity and purpose in a shared environment while still offering pockets of privacy and focus.
- ❑ This thesis aims to address the growing need for well-designed co-working interiors by exploring efficient planning strategies and the application of a modern industrial design language suited to professional, creative, and collaborative communities.

AIM AND OBJECTIVES

- ❑ The primary aim of this thesis is to design a co-working office space that blends flexibility, functionality, and aesthetic appeal, catering to the diverse needs of modern professionals. The project intends to create an interior environment that supports both focused work and open collaboration, while promoting user comfort and well-being.
- Objectives of the study include:
- To understand spatial requirements and zoning strategies in co-working environments.
- To apply the principles of modern industrial interior design within a shared workspace.
- To create an ergonomic, biophilic, and visually engaging space.
- To integrate modular furniture, lighting, and acoustics suitable for co-working users.

SCOPE

- ❑ The study focuses on the interior design of a co-working space located on the 12th floor of Vatika Business Park, Sohna Road, Gurugram. It includes detailed space planning, functional zoning, furniture layout, material selection, lighting, and thematic expression based on a modern industrial style. The project addresses both shared and private workspace requirements. The scope is limited to interior-level interventions and does not include architectural modifications, exterior façade design, or structural changes.

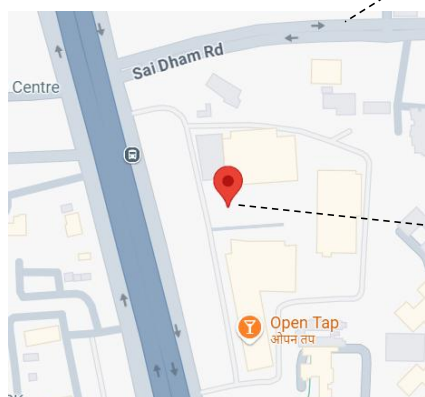
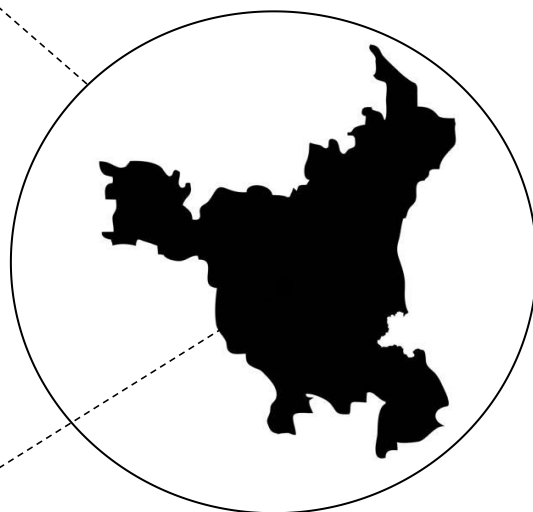
REQUURIMENTS

- RECEPTION & WAITING AREA
- SHARED WORKSTATIONS / HOT DESKING ZONE
- PRIVATE CABINS
- DIRECTOR/MANAGER'S CABIN
- MEETING ROOMS (SMALL AND LARGE)
- CONFERENCE/BOARD ROOM
- PHONE BOOTHS / FOCUS PODS
- INFORMAL LOUNGE / BREAKOUT ZONES
- CAFETERIA / PANTRY AREA
- PLAY OR RECREATIONAL AREA
- WASHROOMS (SEPARATE FOR MALE, FEMALE, AND UNIVERSAL ACCESS)
- STORAGE / PRINT / SERVER ROOM
- UTILITY / HOUSEKEEPING / SERVICE AREA

LIMITATIONS

- THE DESIGN IS DEVELOPED FOR ACADEMIC PURPOSES AND DOES NOT ACCOUNT FOR A REAL-TIME BUDGET, EXECUTION CONSTRAINTS, OR ACTUAL SITE CONSTRUCTION CHALLENGES.
- THE SCOPE IS LIMITED TO INTERIOR DESIGN; NO ARCHITECTURAL OR STRUCTURAL ALTERATIONS ARE PROPOSED IN THE PROJECT.
- MATERIAL CHOICES, LIGHTING FIXTURES, AND FURNITURE SPECIFICATIONS ARE THEORETICAL AND BASED ON CURRENT MARKET TRENDS.
- SERVICE SYSTEMS SUCH AS HVAC, FIRE SAFETY, AND PLUMBING LAYOUTS ARE CONSIDERED CONCEPTUALLY BUT MAY VARY IN REAL-WORLD IMPLEMENTATION.
- USER BEHAVIOR AND LONG-TERM ADAPTABILITY ARE ASSUMED BASED ON RESEARCH AND CASE STUDIES, AND MAY DIFFER IN PRACTICE.

SITE IDENTIFICATION



METHODOLOGY

- ❑ A detailed site study and analysis was conducted to understand the physical condition, access, orientation, services, and urban context of the selected site located on the 12th floor of Vatika Business Park, Sohna Road, Gurugram.
- ❑ Relevant literature was reviewed to explore the evolution, design principles, and space typologies in co-working interiors. In addition, national and international case studies were analyzed to understand planning patterns, user requirements, and material applications in similar projects.
- ❑ Based on the insights gathered, a concept was formulated with zoning diagrams, mood boards, theme direction, and space distribution—anchored in a modern industrial design language that encourages collaboration, functionality, and user comfort.
- ❑ The final design phase included the preparation of 2D layout drawings, 3D rendered views, material specifications, furniture detailing, and services integration to create a comprehensive and user-centric co-working environment.

SWOT ANALYSIS

Strengths (Internal Positive Factors)

1. **Prime Location:** Situated on the 12th floor of Vatika Business Park, a high-end commercial hub on Sohna Road, offering excellent visibility and accessibility.
2. **Ample Natural Light:** The elevated floor level ensures abundant daylight and open views, enhancing user comfort and work productivity.
3. **Flexible Floor Layout:** A large, open floorplate of approx. 48,000–50,000 sq. ft. allows for efficient space zoning and modular planning.
4. **Modern Infrastructure:** Located in a premium-grade building equipped with elevators, HVAC systems, and 24×7 power backup.

Weaknesses (Internal Negative Factors)

1. **High Operating Costs:** Rent, maintenance, and services in a prime commercial tower can lead to increased running expenses.
2. **Fixed Core Services:** Existing shaft and utility locations may limit planning flexibility in interior design.
3. **Shared Amenities:** Public lobbies and lifts are shared with other offices, which may affect branding and user privacy.

Opportunities (External Positive Factors)

1. **Growing Demand for Hybrid Workspaces:** The shift toward flexible work models boosts demand for co-working environments.
2. **Start-Up Culture:** Gurugram is a growing hub for start-ups and entrepreneurs, ensuring a consistent target audience.
3. **Networking Events & Workshops:** The space can host interactive events that strengthen community and visibility.
4. **Social Media Presence:** Design-led interiors can attract media coverage and online engagement with minimal marketing effort.

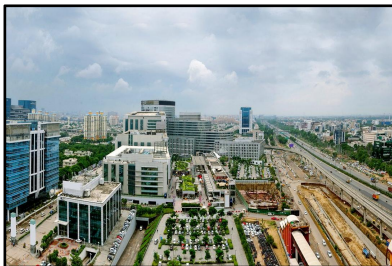
Threats (External Negative Factors)

1. **High Competition:** Multiple co-working chains like WeWork and Innov8 are located nearby, offering similar services.
2. **Market Instability:** Economic slowdowns or global crises may reduce occupancy rates or delay expansions.
3. **Technological Reliance:** Disruptions in internet or tech infrastructure can impact day-to-day business operations.
4. **Trend Saturation:** The rise in co-working spaces may create an oversaturated market, making differentiation difficult.

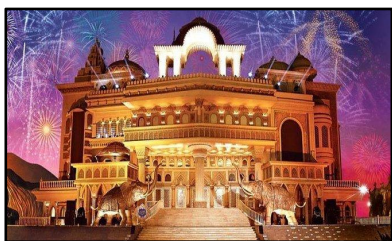
SITE ANALYSIS

ABOUT GURUGRAM

Gurugram, located in the northern Indian state of Haryana, is one of India's leading financial and industrial hubs. Formerly known as Gurgaon, the city lies just southwest of New Delhi and is a part of the National Capital Region (NCR). Over the past two decades, Gurugram has experienced rapid urban development, with the rise of skyscrapers, luxury apartments, multinational offices, and high-end infrastructure. It is home to many Fortune 500 companies, IT parks, and co-working chains, making it a magnet for startups and professionals. Its excellent metro connectivity, expressways, and modern urban planning make it ideal for innovative commercial interior projects.



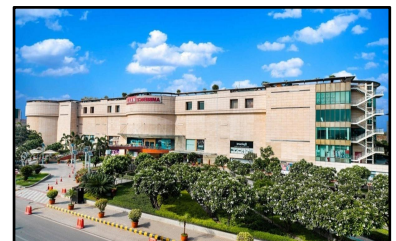
MAJOR LANDMARK



KINGDOM OF DREAMS



CYBER HUB



AMBIENCE MALL



DAMDAMA LAKE



SULTANPUR PARK

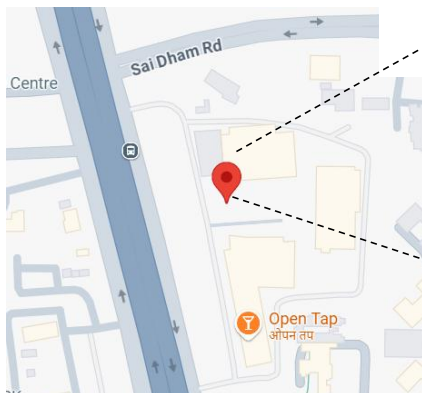
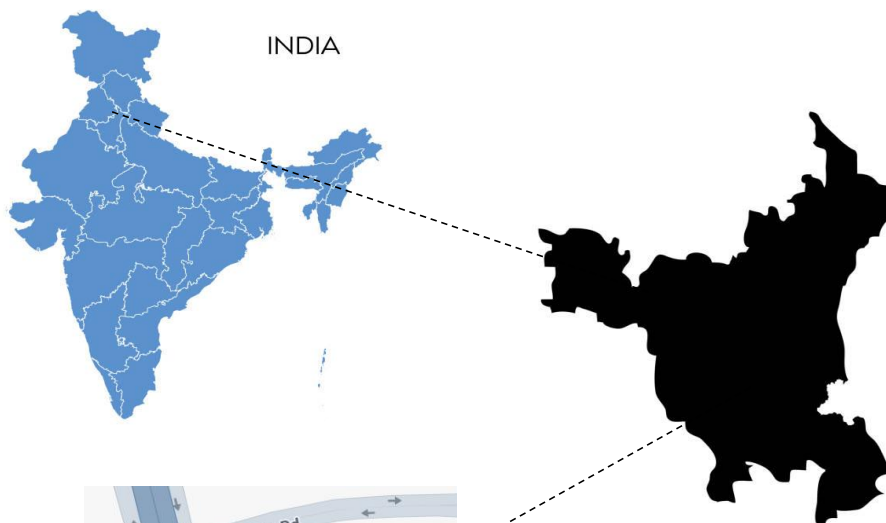


LEISURE VALLEY

SITE INTRODUCTION

CLIENT - MR. GAURAV MITTAL
PROJECT TYPE - CO-WORKING OFFICE
LOCATON - 49, Sohna Rd, Vatika City, Block W,
Sector 49, Gurugram, Haryana
●
SITE AREA - 48000-50000 sq.ft.

SITE IDENTIFICATION



SOHNA ROAD





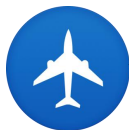
CONNECTIVITY



MILLENIUM CITY
CENTRE METRO
7.9 km.



BADSHAHPUR
CHOWK
3.2 K.M.



IGI AIRPORT
21.0 K.M.



NH-48
1 K.M.

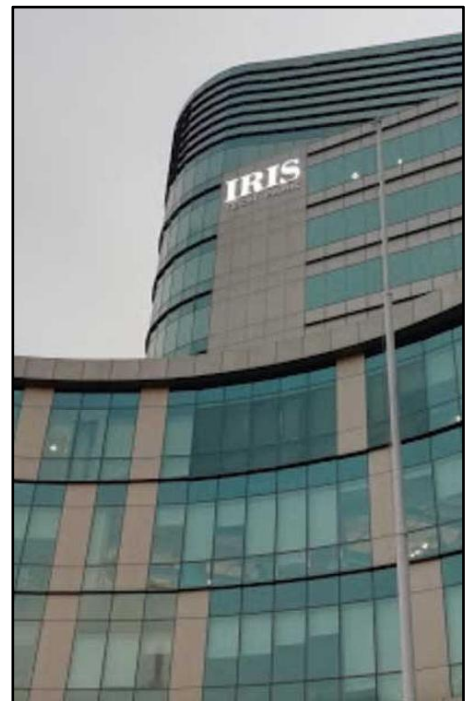
SITE SURROUNDINGS



D.A.V PUBLIC SCHOOL



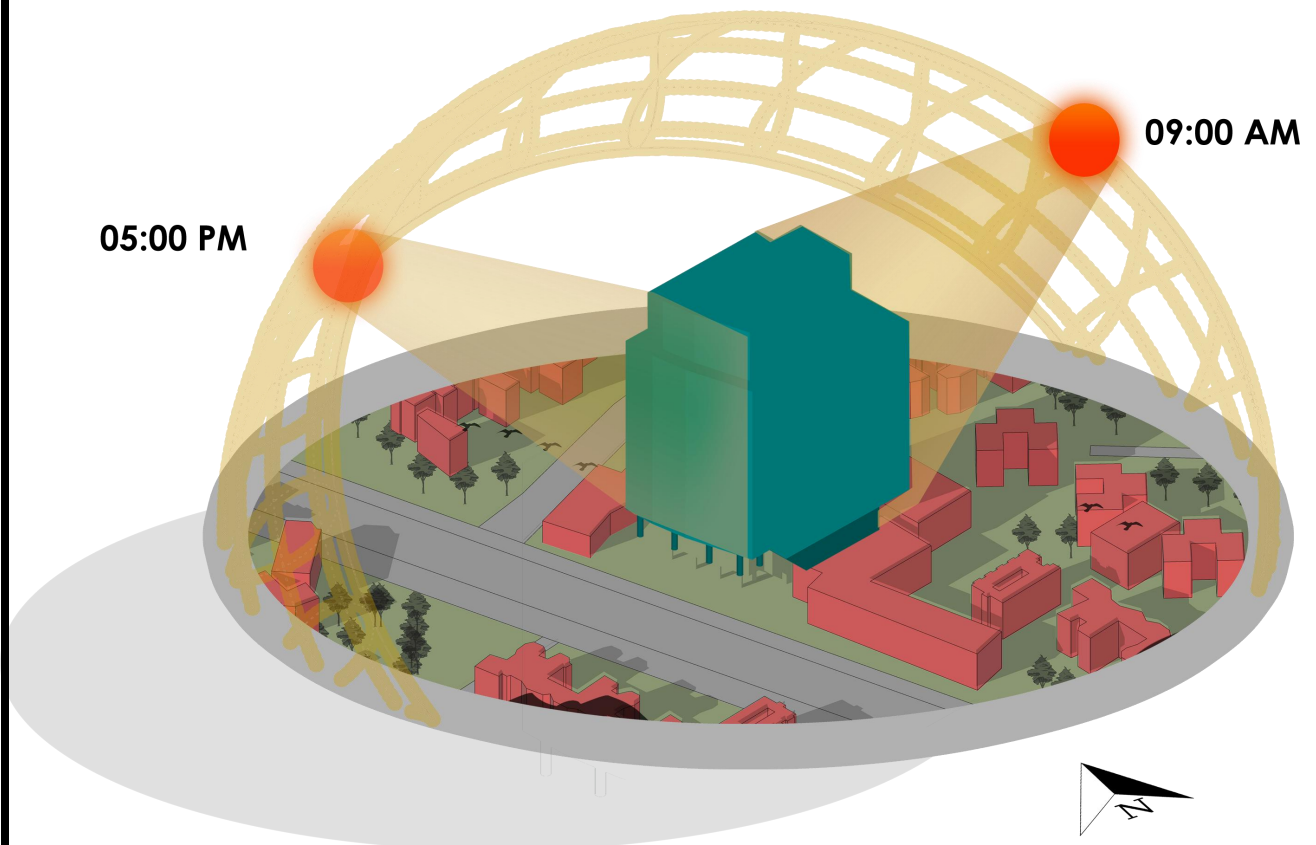
MATRIKIRAN
SCHOOL



IRIS TECH PARK

SUN PATH

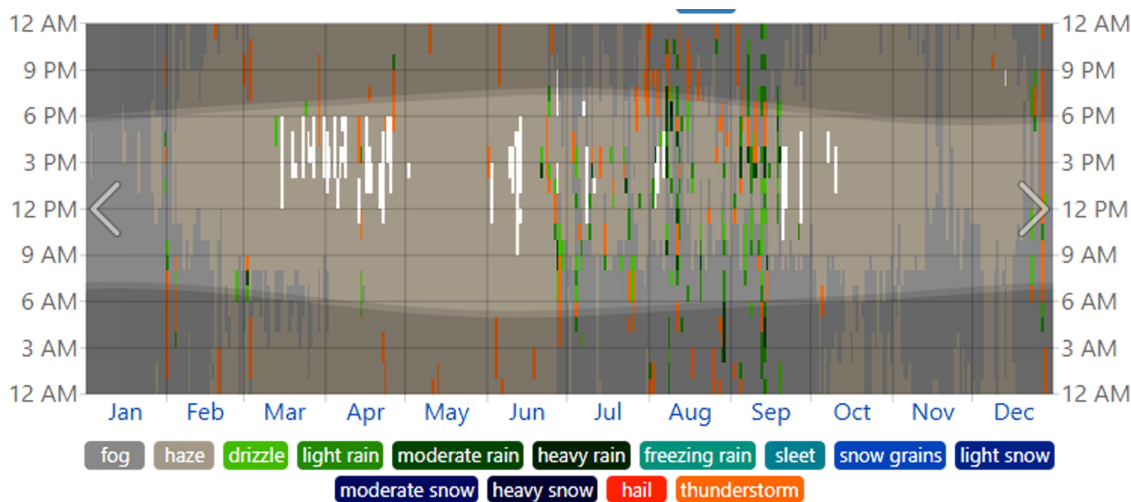
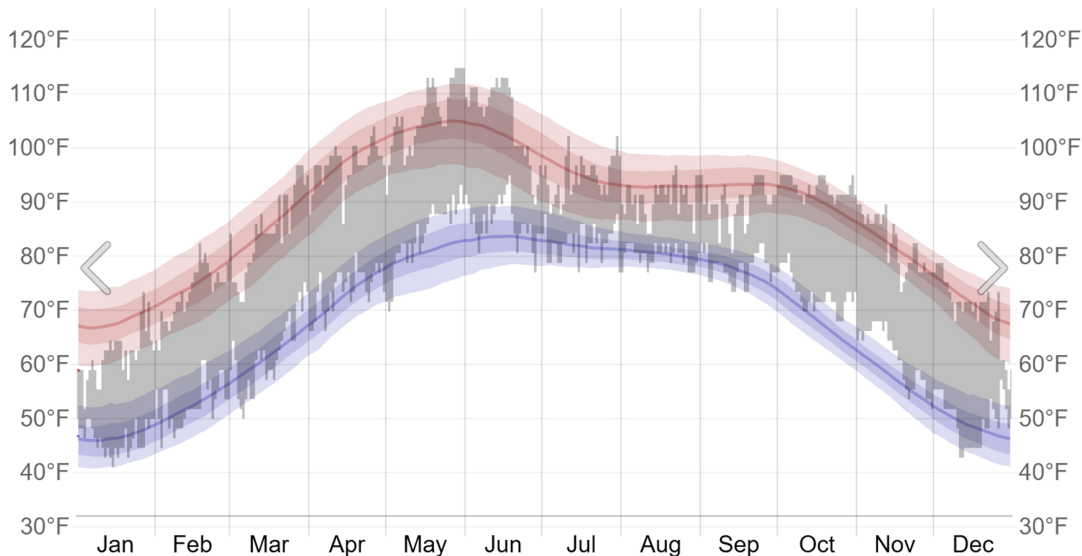
- The 12th-floor site receives ample natural daylight due to its elevation and unobstructed facade.
- East-facing zones receive direct sunlight in the morning, ideal for energizing collaborative areas or break zones.
- West-facing areas receive harsher afternoon light, requiring glare control through blinds or shading devices.
- South-facing façades benefit from consistent daylight throughout the day and are suitable for workstations and lounges.
- North-facing areas offer diffused, glare-free light, ideal for meeting rooms and focus zones.



CLIMATE DATA

Gurugram has a composite climate with hot summers (35–45°C), cool winters (5–20°C), and moderate monsoons (600–800 mm rainfall annually). The site on the 12th floor benefits from strong daylight and natural ventilation. South-facing facades receive consistent sun, while seasonal wind patterns enhance airflow. Interior planning must address glare, heat gain, and thermal comfort through shading and smart HVAC design.

TEMPERATURE GRAPH



RAIN GRAPH

LITERATURE STUDY -1

**Unboxed Coworking Offices – Noida
| Chaukor Studio**

INTRODUCTION

Unboxed Co-working in Noida is a transformative project that repurposes an old industrial unit into a dynamic co-working space. Designed by Chaukor Studio, the project emphasizes sustainability and adaptive reuse, reflecting a blend of industrial heritage and modern functionality.



Unboxed Co-working located in Noida, India is one of its kind. Designed by Noida based Chaukor Studio, its uniqueness is imbibed in its regenerative transformation from an old industrial unit to a dynamic co-working space.



Retaining most of the surfaces and reusing salvaged elements from the old building creates a resource efficient and cost-effective design process. An overlap of new layers to the existing patterns and form of the building gives the space its distinct character; a dynamic mix of old and new.

SITE LOCATION



SITE DETAIL

CLIENT	- UNBOXED CO-WORKING
ARCHITECT	- CHAUKOR STUDIOS
PROJECT TYPE	- CO-WORKING OFFICE
LOCATON	- NOIDA, UTTAR PRADESH
SITE AREA	- 12,000 sq.ft.

INTERIOR APPROACH

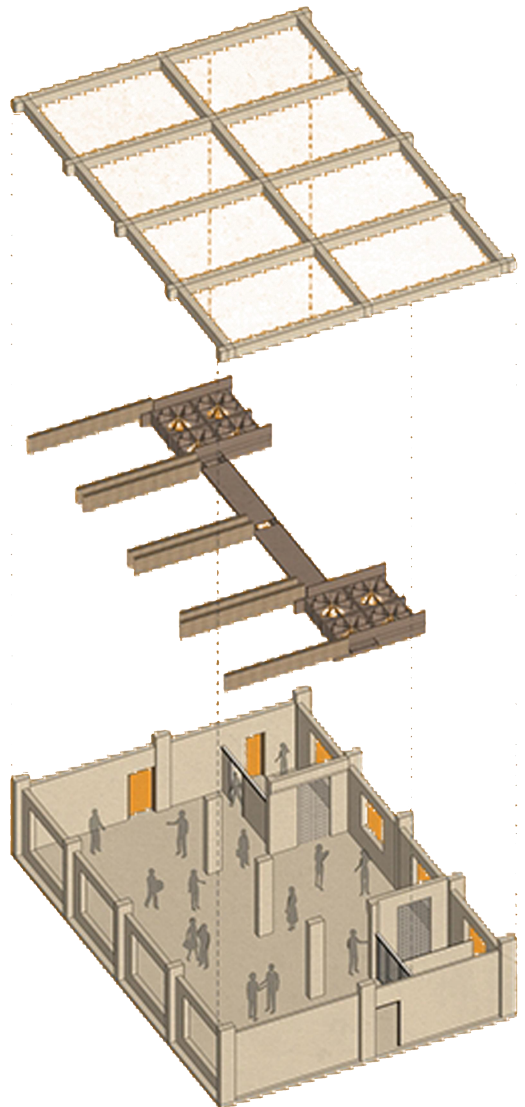
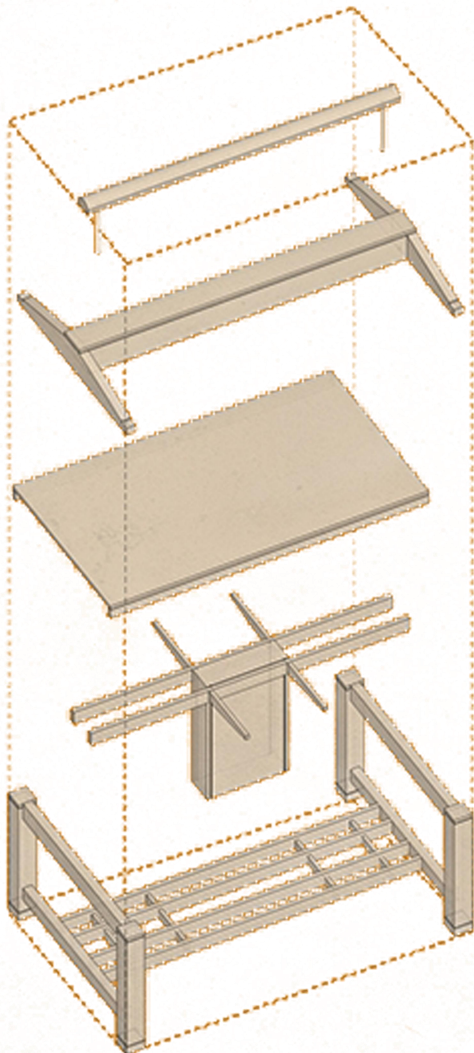
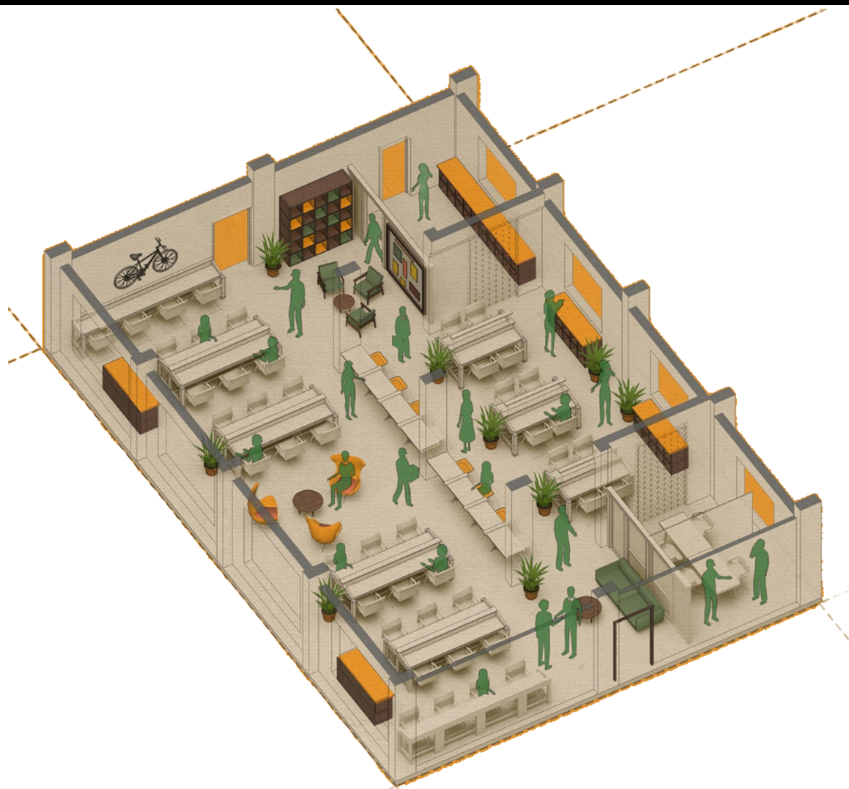
Unboxed Co-working follows a user-centered interior design approach that emphasizes openness, flexibility, and a sense of community. The layout is thoughtfully zoned to accommodate both collaborative and private working styles, offering open desks, breakout zones, meeting rooms, and quiet nooks within a fluid spatial plan.

The design integrates industrial and rustic elements through the use of exposed brick walls, concrete flooring, suspended light fixtures, and reclaimed wooden furniture. Natural lighting is maximized with large windows, while greenery and indoor planters soften the raw textures and enhance the biophilic quality of the space.



Color and graphics are used purposefully to define zones and promote creativity, especially in common areas. The furniture is modular, allowing quick reconfiguration to support workshops, events, or team meetings. Overall, the interior reflects an energetic, youthful, and functional environment tailored for startups, freelancers, and remote teams.





MATERIALS SPECIFICATION :-

FLOOR COVERING:

- Wooden Flooring/Natural Finish
- Carpet Tiles/Metro Gray/Flotex

PARTITIONS:

- Plywood/Greenlam
- HDF Boards/Exterior Grade
- Veneer/American Walnut
- Texture Paint/Metallic Finish
- Texture Paint/Oikos Marmorino
- Smile Board/Cement Particle Boards
- Writable Acrylic LGP Panels/Custom

CEILING SYSTEMS:

1. Aluminium/JSW (for framing)
2. HDF/Exterior Grade/Greenlam
3. Paint/Steel Grey 0643/Asian paints
4. Acoustical Board/HERA/Saint Gobain

LIGHTING:

1. Ceiling Light/Magnus 4x LBT/ Plus Light Tech
2. Strip Light/Flexible LED Strip/Uniser

FURNITURE:

1. Executive Chairs/Flex Executive/Andreu World
2. Executive Chairs/Deep Executive/Quinti
3. Staff Chair/Celle Chairs/Herman Miller
4. MD cabin's Sofa/Digital/Roche Bobois

LITERATURE STUDY -2

**Studio Nova Co-Working
Amsterdam, Netherlands**

Studio Nova is an international co-working space located in Amsterdam, designed with a minimalist and biophilic approach. The space encourages collaboration through open planning, flexible furniture, and natural materials. Light wood finishes, indoor plants, and neutral colors create a calming work atmosphere. The design promotes well-being, adaptability, and creativity, making it ideal for freelancers, startups, and professionals working in design, tech, and the creative industries.



SITE DETAIL



Studio Nova Co-Working Amsterdam, Netherlands

Architects: Wiel Arets

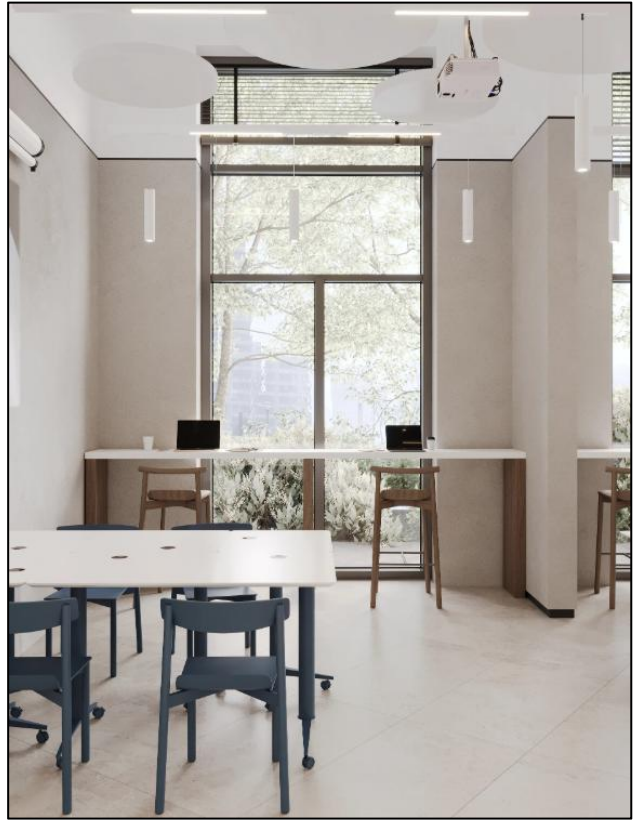
Area : 8000 ft²

Year : 2021

Manufacturers : Aluglaze

Lead Architects : Winy Maas, Ben van Berkel

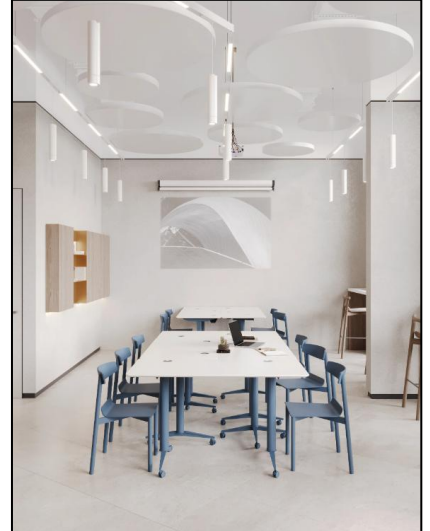
INTERIOR APPROACH



Studio Nova embodies a refined approach to collaborative workspace design with a focus on minimalism, fluid circulation, and natural integration. The interiors are open-plan, modular, and acoustically balanced. Furniture is deliberately simple, light, and functional to reflect an uncluttered aesthetic. Biophilic elements like vertical gardens and indoor planters soften the layout and enhance user well-being. The palette is neutral—featuring whites, beiges, and natural wood—to amplify daylight and maintain a calm ambiance.ital professionals.

Informal lounges, movable partitions, and layered lighting create a user-driven and flexible workspace ideal for creatives and dig

The interior approach at Studio Nova combines simplicity with nature-inspired detailing. Minimalist design principles are applied through clean-lined furniture, light-toned finishes, and clutter-free layouts. Biophilic design enhances user comfort by incorporating greenery, daylight, and organic materials.



THE SPATIAL FLOW

Studio Nova follows an open and uninterrupted spatial flow that promotes both collaboration and focused work. The entry leads into a central reception and lounge area, visually connected to flexible workstations arranged in a grid layout. Meeting pods and private cabins are strategically placed along the periphery, separated by partial glass partitions that maintain openness while controlling sound. Circulation is intuitive, with wide corridors and minimal obstructions guiding movement naturally across zones. Informal seating areas and standing desks are distributed organically throughout the plan, encouraging spontaneous interaction. The spatial arrangement is highly adaptive, allowing users to navigate between quiet zones, collaborative spaces, and breakout areas without disruption. The seamless flow enhances user comfort and supports diverse work styles within a calm, cohesive environment.

FLOOR COVERING:

- Natural Oak/Wooden Planks
- Recycled Carpet Tiles/Grey Speckle

WALL FINISHES/CURTAIN:

- Material Palette: White, warm wood tones, brushed aluminum accents.
- Color Scheme: Neutral base with accents of blue, beige, and natural textures..
- wood
- Fluted glass
- Reclaimed jute

CEILING SYSTEMS:

1. Acoustic ceiling baffles for noise control in open spaces.
2. HDF/Exterior Grade/Greenlam

LIGHTING:

1. Use of natural daylight supported with minimal linear pendant lighting
2. Strip Light
3. hanging light made with glass bowl and rope

FURNITURE:

1. Reclaimed wood
2. Leather
3. Reclaimed m.s.

CASE STUDY

**OFIS SQUARE CO-WORKING SPACE ,
SECTOR 3 NOIDA**

INTRODUCTION

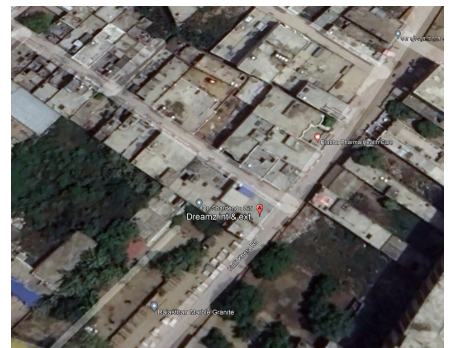
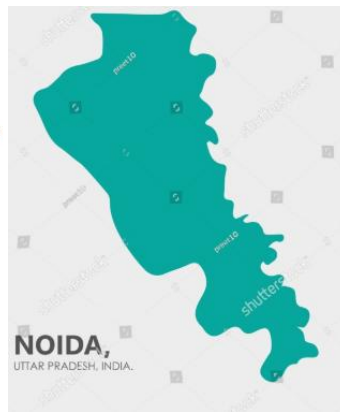
OFIS SQUARE

Add. : A-1, Sector 3, Noida, Uttar Pradesh

Area : 12000 ft²

Project Type: Co-working Office Space

SITE LOCATION



ABOUT THE THEME

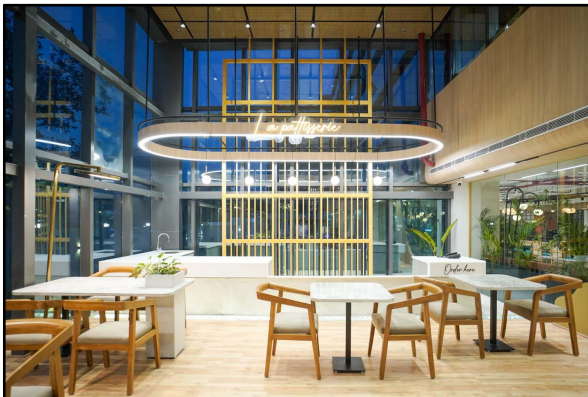
- The theme of Case Study 1, Ofis Square – Sector 3, Noida, follows a modern minimalistic interior approach with a focus on functionality, simplicity, and user comfort. The design uses a neutral color palette, modular furniture, and clean lines to create an efficient and organized workspace. Emphasis is placed on openness, flexibility, and collaboration, making it ideal for startups and small teams seeking a professional yet inviting environment.

CONNECTIVITY:

- Excellent connectivity via Delhi Metro Blue Line (nearest: Sector 16 Metro Station)
- Connected through major arterial roads like Captain Vijayant Thapar Marg and DND Flyway
- Multiple public transport options including autos, buses, and e-rickshaws

INTERIOR APPROACH

- The design for Ofis Square in Sector 3, Noida is focused on efficiency, clarity, and collaboration, suitable for startups and independent professionals. The interior follows a modern minimalistic approach, utilizing clean lines, neutral colors, and modular work settings. Open desks, private cabins, and collaborative zones are smartly laid out to support different working styles while maintaining an overall professional vibe.



Spatial Planning

- Reception & Waiting Area
- Open Workstations / Hot Desking Zone
- Private Cabins for 1–4 users
- Director/Manager Cabin
- Meeting Room (Small)
- Conference Room
- Cafeteria
- Washrooms & Utility Area

Design Features

Material Palette: Grey carpet tiles, matte black metal fixtures, engineered wood furniture, and white ceiling panels

Lighting: Linear LED panels and track lights ensure consistent and well-diffused illumination

Furniture: Ergonomic, modular, and space-efficient with emphasis on flexibility

Color Scheme: Neutral tones with pops of green (biophilia)

KEY LEARNING

- Efficient use of limited floor area through vertical storage and compact planning
- Importance of natural light and acoustic control in maintaining focus
- Balanced integration of formal and informal zones to support varied workstyles

MATERIALS SPECIFICATION :-

WALL COVERING:

1. White colour paint
2. Wooden textured pvc panels
3. Geometric pattern pvc panels
4. Artificial grass carpet

FLOOR COVERING:

1. Beige colour ceramic tiles
2. Carpet

PARTITIONS:

1. Plywood
2. Mdf board
3. Veneer
5. Paint
6. Cement-bonded Particle Boards
7. Mdf jali

FALSE CEILING:

1. Gypsum board
2. Mdf jali
3. Paint/off white/Asian paints
4. Wooden textured Pvc panels
5. paint/brown/asian paints

LIGHTING:

1. Panel light
2. Cove Light
3. Hanging light

FURNITURE:

1. Made with plywood
2. Brown colour mica
3. white colour mica
4. MD cabin's Sofa/Digital/Roche Bobois

PRE MADE FURNITURE:

1. Visitors chair
2. Boss chair
3. employee chair

SANITARY EQUIPMENT:

1. Floor mounted w.c.
2. Wall mounted washbasin

CONCEPT



OPEN SPACE DESIGN IN OFFICE

The design concept focuses on creating a dynamic, adaptive, and collaborative work environment tailored for modern professionals. It integrates zoned workstyles—from open hot-desking to private cabins—within a modern industrial interior language. The space promotes interaction, flexibility, and user comfort through open layouts, natural lighting, modular furniture, and biophilic touches.

- Encourage creativity and productivity
- Balance focus areas with informal zones
- Blend raw materials with refined finishes
- Use industrial detailing (exposed ceiling, black frames, wood tones)



MOOD BOARD

THIS MOOD BOARD REFLECTS A MODERN INDUSTRIAL INTERIOR STYLE, BLENDING RAW TEXTURES WITH CONTEMPORARY ELEGANCE. THE USE OF GREY CARPET TILES AND ENGINEERED WOOD FLOORING CREATES A BALANCED CONTRAST BETWEEN WARMTH AND RUGGEDNESS. LINEAR WHITE-BODY LIGHTS ENHANCE THE MINIMAL AESTHETIC, WHILE INDOOR PLANTERS ADD A REFRESHING BIOPHILIC ELEMENT TO SOFTEN THE INDUSTRIAL PALETTE. THE OVERALL DESIGN EMPHASIZES FUNCTIONALITY, OPENNESS, AND VISUAL RHYTHM—PERFECTLY SUITED FOR A DYNAMIC, COLLABORATIVE CO-WORKING ENVIRONMENT ROOTED IN COMFORT AND MODERNITY.

INTERIOR THEME

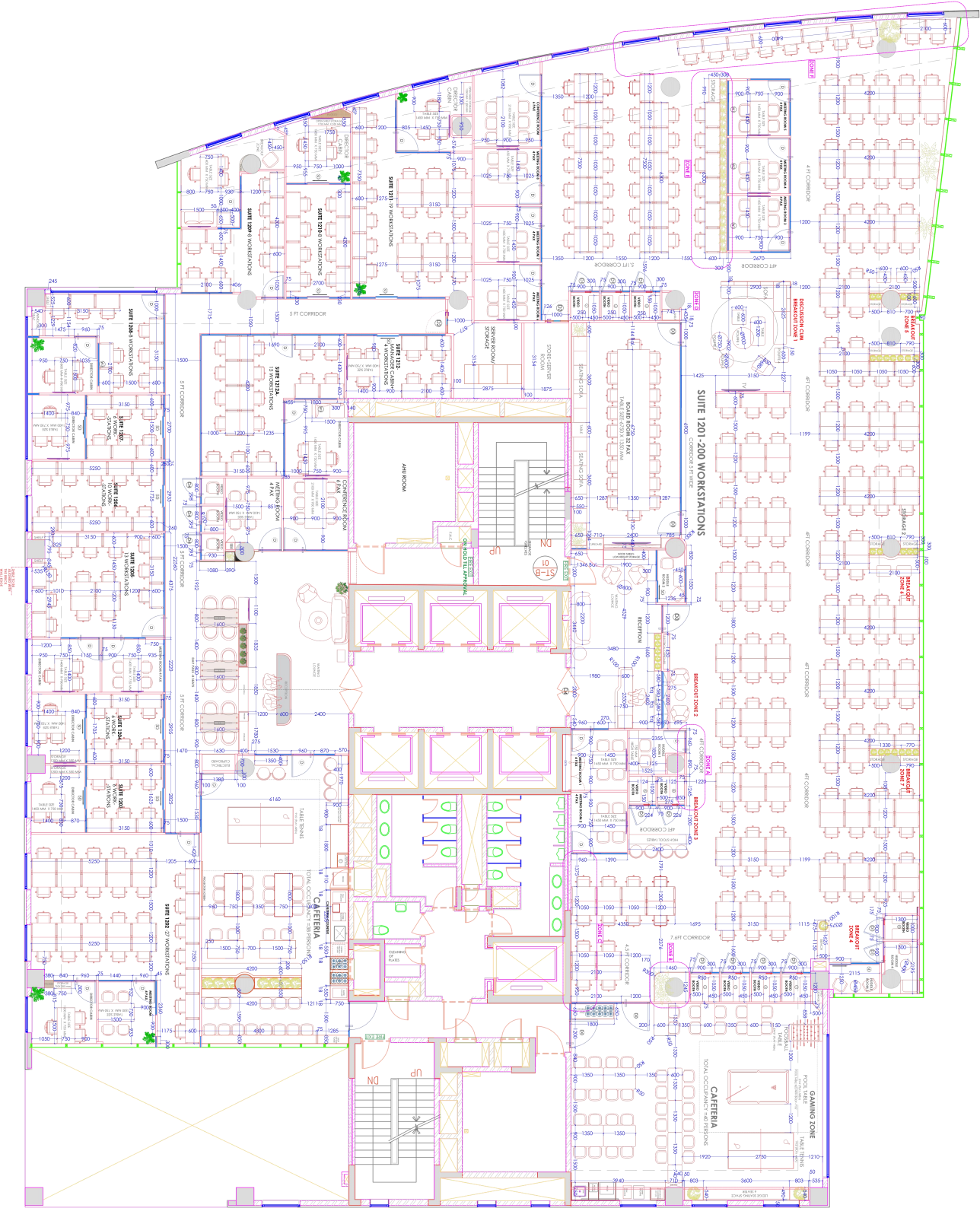
THE INTERIOR DESIGN THEME FOR THIS CO-WORKING SPACE IS INSPIRED BY MODERN INDUSTRIAL AESTHETICS, COMBINING RAW ARCHITECTURAL ELEMENTS WITH CONTEMPORARY MINIMALISM. THE DESIGN EMPHASIZES OPEN CEILINGS, EXPOSED DUCTWORK, MATTE BLACK METAL FRAMES, AND ENGINEERED WOOD FINISHES TO ACHIEVE A BOLD YET PROFESSIONAL ATMOSPHERE. A NEUTRAL COLOR PALETTE OF GREYS, BLACKS, AND NATURAL BROWNS CREATES VISUAL BALANCE, WHILE INDOOR PLANTERS AND NATURAL LIGHT INTRODUCE BIOPHILIC WARMTH TO SOFTEN THE INDUSTRIAL TONE. THE THEME IS CHOSEN TO REFLECT THE NEEDS OF TODAY'S AGILE WORKFORCE, FOCUSING ON FLEXIBILITY, FUNCTIONALITY, AND COMFORT. MODULAR FURNITURE, ACOUSTIC CEILING BAFFLES, AND STRATEGICALLY ZONED WORK AREAS ENHANCE USER PRODUCTIVITY AND COLLABORATION. INFORMAL LOUNGE ZONES, CAFETERIAS, AND BREAKOUT AREAS ARE DESIGNED WITH CLEAN LINES AND PRACTICAL LAYOUTS, MAKING THE SPACE BOTH DYNAMIC AND INVITING. THIS MODERN INDUSTRIAL THEME CELEBRATES RAW BEAUTY WHILE SUPPORTING INNOVATION AND A SENSE OF COMMUNITY.

MATERIAL BOARD



DESIGN DEVELOPMENT

WALL ELEVATIONS,FLOORING,FALSE
CEILING



DOOR/WINDOW SCHEDULE			
TYPE OF DOOR	D/W	DOOR SIZES IN MM	UNIT/L
SILE DOOR	D1	960 X 2250	2250 00
SILE DOOR	D2	1200 X 2250	2250 00
SILE DOOR	D3	900 X 2250	2250 00
VISION PANEL	D4	1000 X 2250	2250 00
SILE DOOR	D5	1000 X 2250	2250 00
SILE DOOR	D6	900 X 2250	2250 00
SLIDING DOOR	SD	900 X 2250	2250 00
FIXED WINDOW	W1	2250 X 1200	2250 1050
FIXED WINDOW	W2	2250 X 1200	2250 1050
FIXED WINDOW	W3	1800 X 1200	2250 1050
ALUMINUM PART. (GEORGIAN BARS)		600 X 2250	2250 00

CEILING TYPE LEGEND

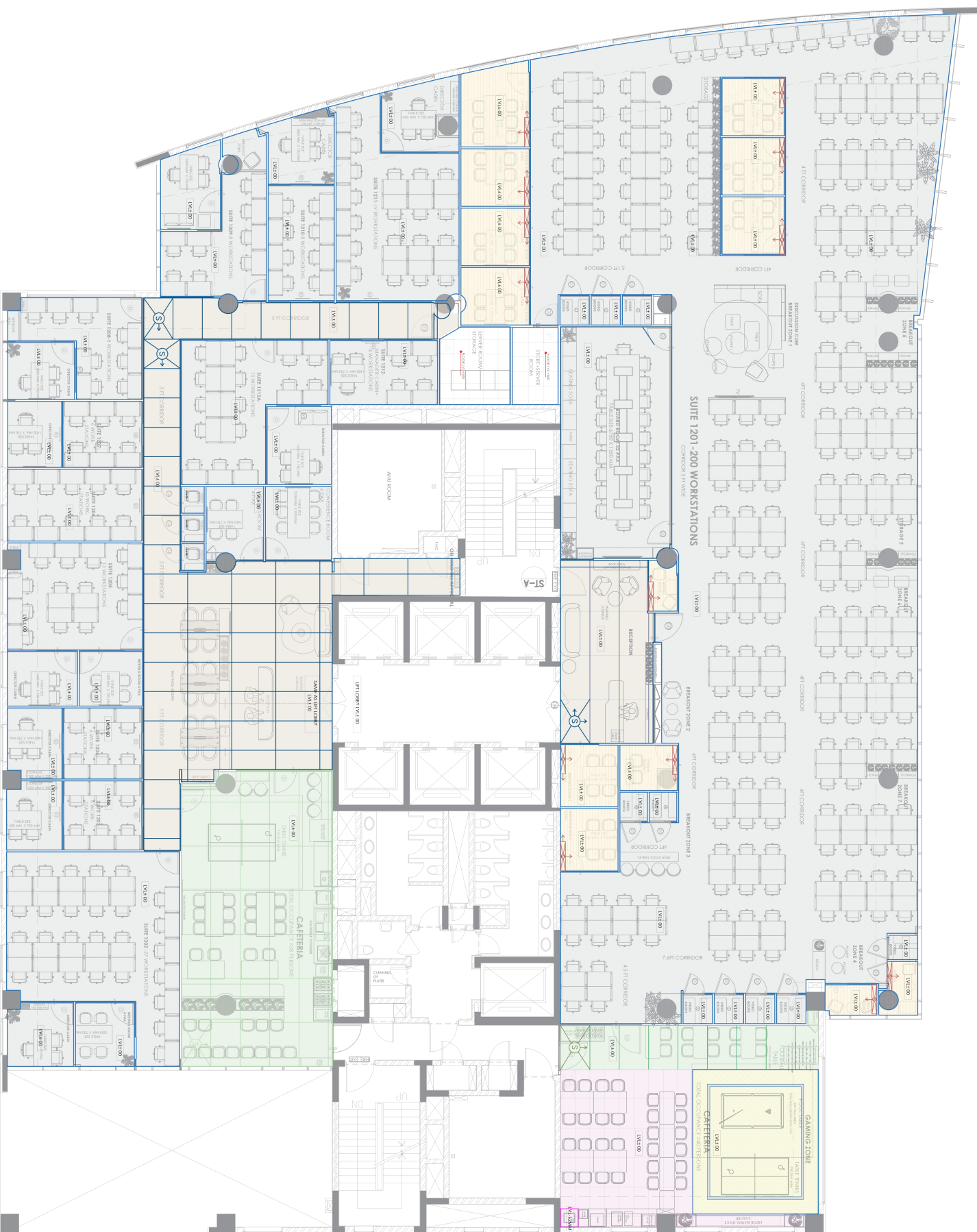
SYMBOL	DESCRIPTION	DESCRIPTION
	GYP/SLIM CEILING	LVL 4-2300 MM BOTTOM LEVEL
	CALCIUM SILICATE 2 X 2	LVL 4-2500 MM BOTTOM LEVEL
	PlyWOOD/IXARKINE PLY WITH LAMINATE FINISH	LVL 4-2300 MM BOTTOM LEVEL
	MEAL PERFORATED 2 X 4	LVL 4-2500 MM BOTTOM LEVEL
	PLYWOOD WITH LAMINATE FINISH	LVL 4-2300 MM BOTTOM LEVEL
	PELMEI	LVL 4-2300/2480 MM BOTTOM LEVEL

LEGEND-LIGHTS

SYMBOL	DESCRIPTION	No.
	SURFACE CYLINDER (WHITE BODY)	36
	HANGING CYLINDER (WHITE BODY)	103
	SQUARE DIFFUSED LIGHT (BLACK BODY)	8
	DIFFUSED LIGHT	2
	PENDANT LIGHT	3
	LINEAR DIFFUSED LIGHT 3600	24
	LINEAR DIFFUSED LIGHT 2400	17
	LINEAR DIFFUSED LIGHT 1800	7
	LINEAR DIFFUSED LIGHT 1200	19
	PANEL LIGHT	48
	CONE PENDANT LIGHT - 300 MM DIA	3
	PENDANT LIGHT WHITE BODY WITH WOODEN TOP - 350 MM DIA	15
	PENDANT LIGHT BLACK BODY - 350 MM DIA	2
	PANCAKE FLAT BODY DIFFUSED LIGHT - 300 MM	13
	HANGING BALL LIGHT	2
	GARDEN SPIKE LIGHT	4
	LED SPOT LIGHT	2
	30 WATT PHILIPS - GRID LIGHT	AS PER SITE
	COVE LIGHT IN CEILING	6
	NEON LIGHT, LIGHT UNDER SHELVES AS PER SITE	11
	FIRE EXT. SMOKE	3
	FAN LIGHT	3
	DAY PASS LIGHT	3
	TRACK LIGHT (1 METRE)	3
	TRACK LIGHT (2 METERS)	3
	DIFFUSED RECTANGLE LIGHT (1800 MM X 900 MM)	1
	20 WATT DIFFUSED PANEL	1

1. PLEASE NOTE THAT THE FINAL PELMET LEVELS TO BE FOLLOWED AS PER VAIKA FACADE CONTROL DETAILS SHARED.





DESIGN DEVELOPMENT

WALL ELEVATIONS/3D VIEW



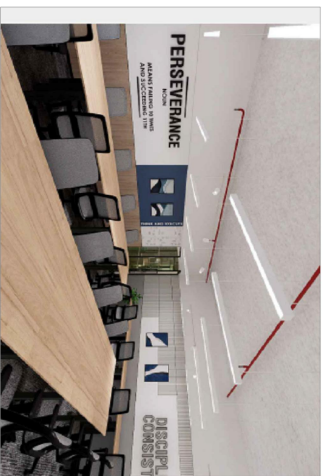
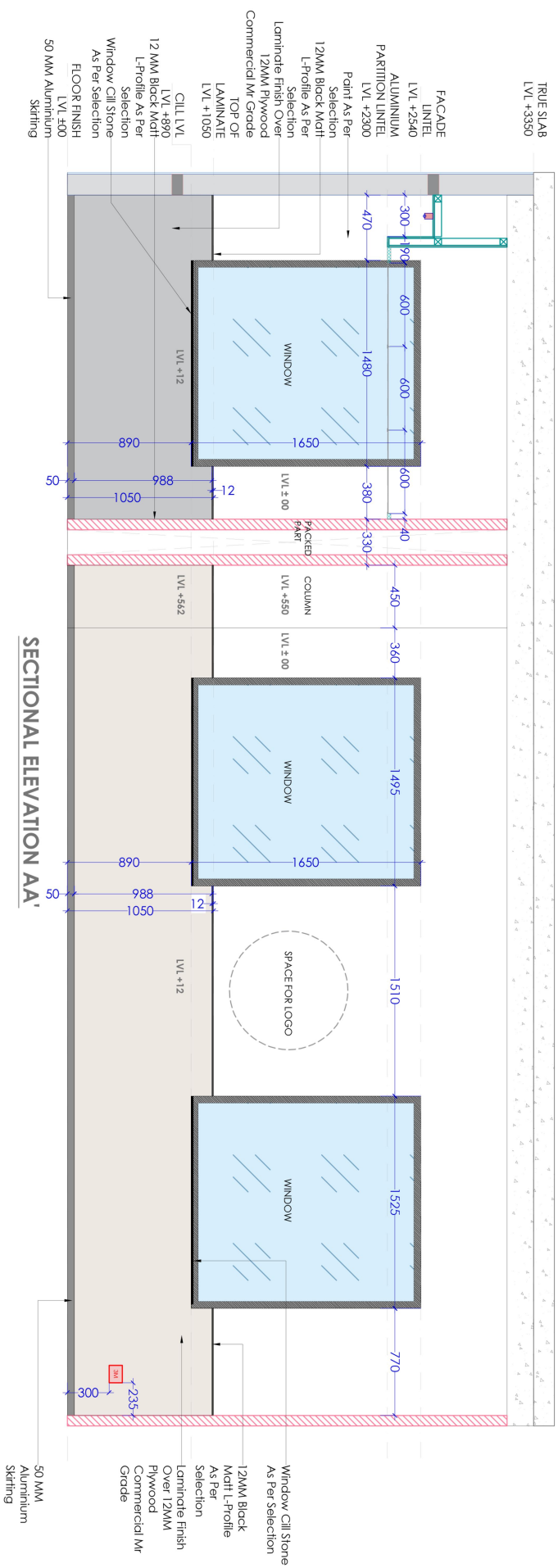
PERSEVERANCE

MOTIVATION

REINVENTING YOUR BUSINESS
AND REDEFINING IT

THINK AND EXECUTE

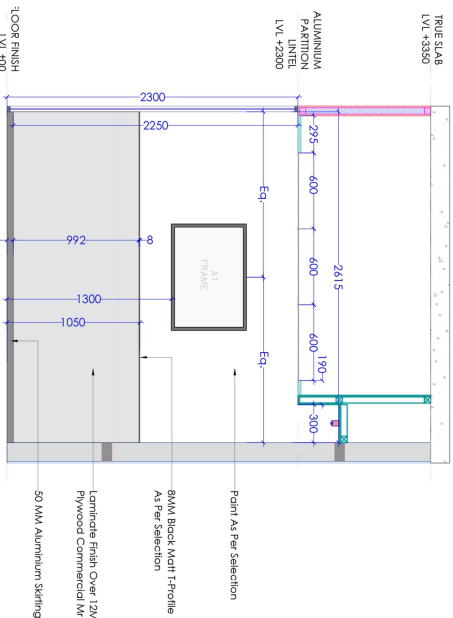
REFERENCE IMAGE 3



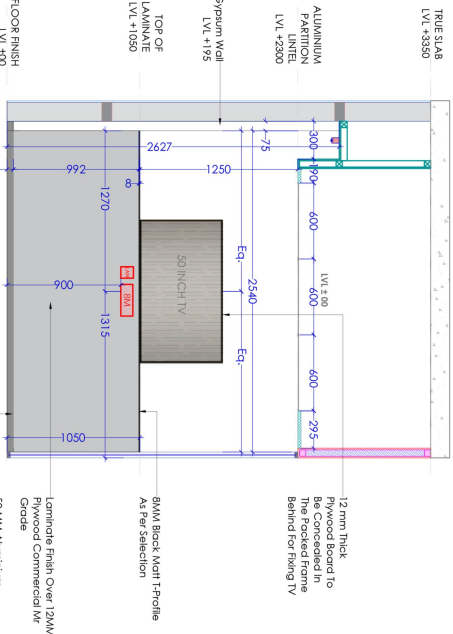
REFERENCE IMAGE 1



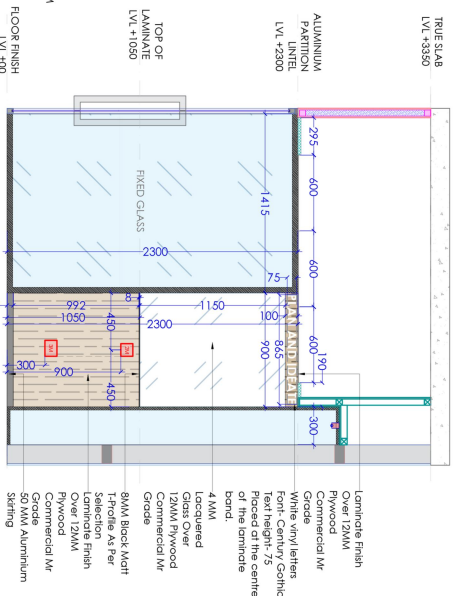
REFERENCE IMAGE 2



SECTIONAL ELEVATION BB'



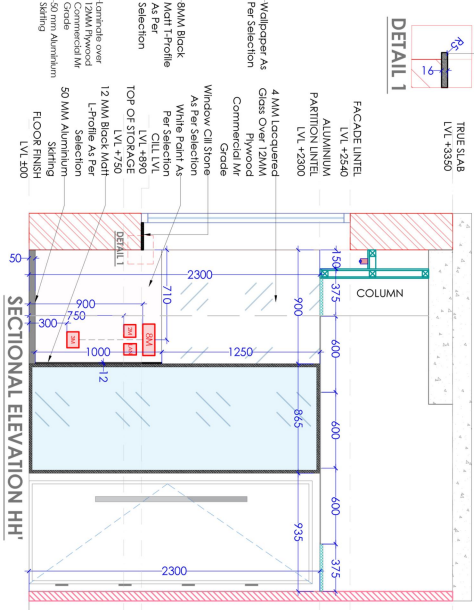
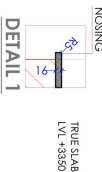
SECTIONAL ELEVATION CC'



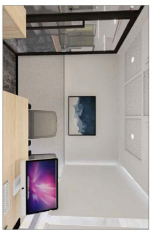
SECTIONAL ELEVATION DD'



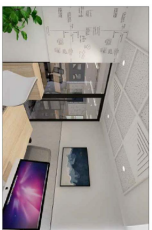
SECTIONAL ELEVATION EE'



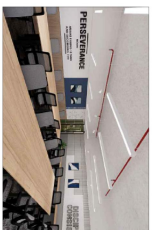
SECTIONAL ELEVATION HH'



REFERENCE IMAGE 1



REFERENCE IMAGE 2



REFERENCE IMAGE 3



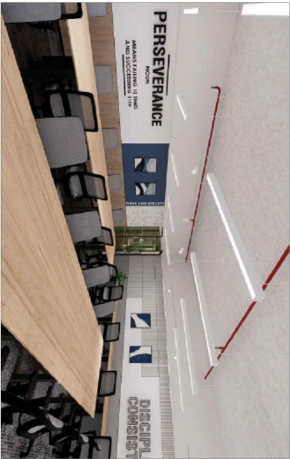
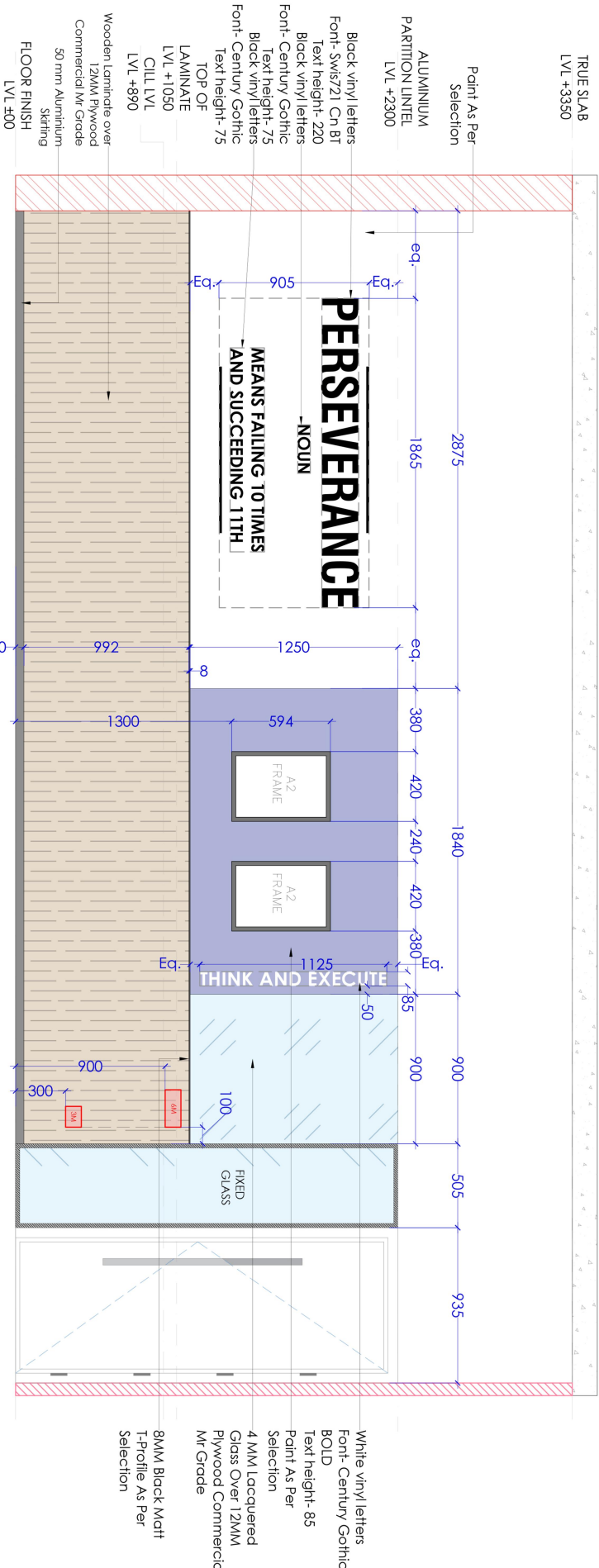
REFERENCE IMAGE 4



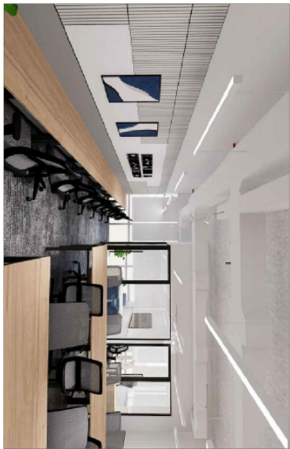
REFERENCE IMAGE 5



REFERENCE IMAGE 6



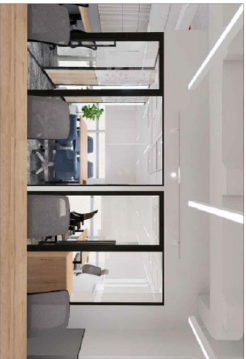
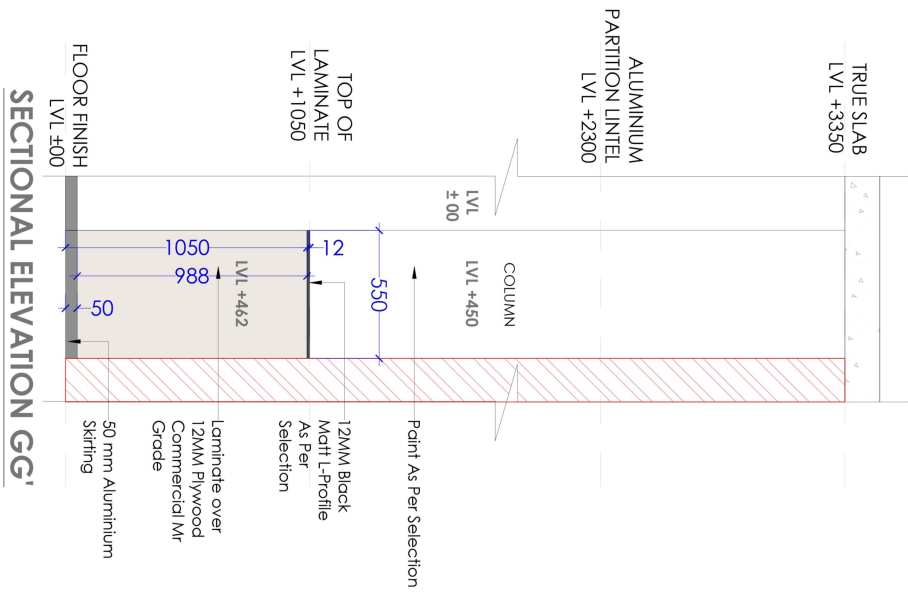
REFERENCE IMAGE 1



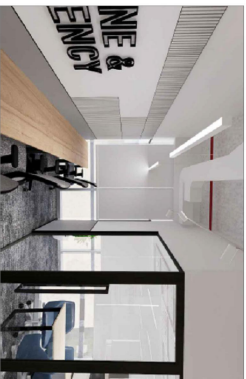
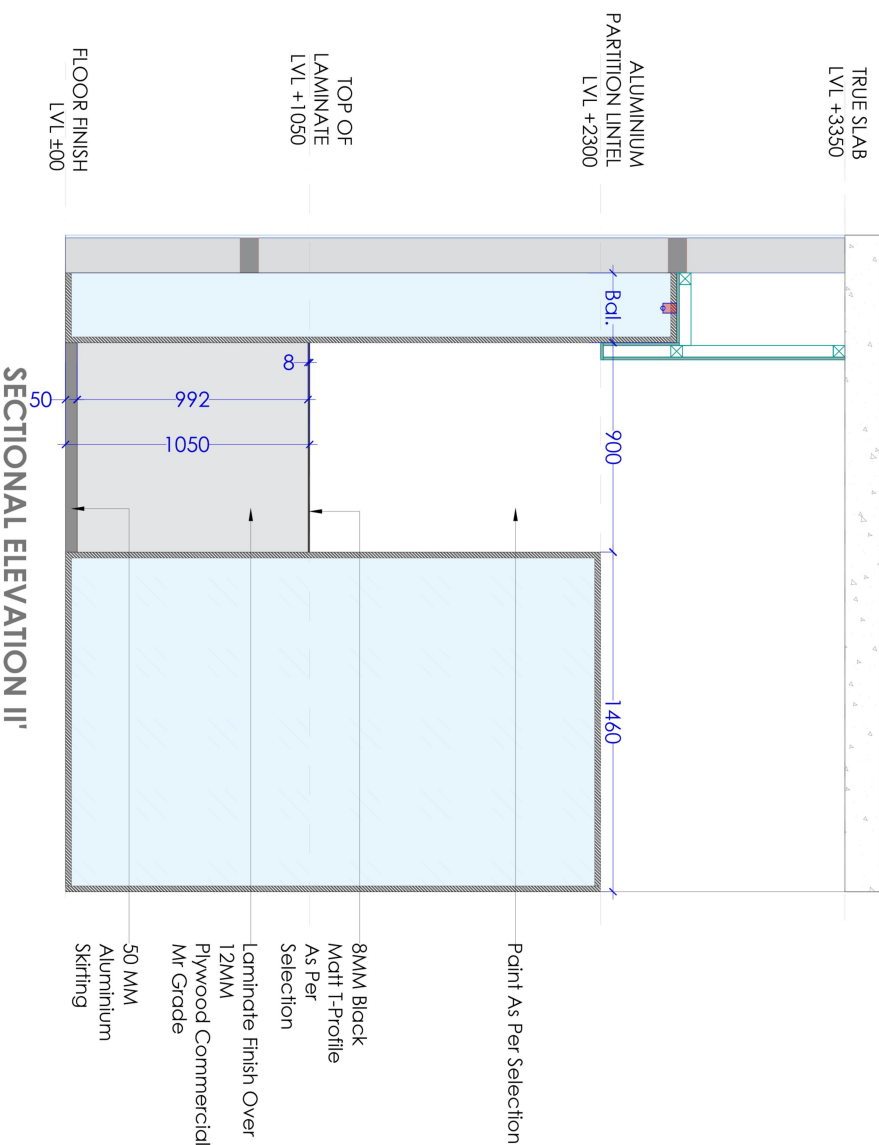
REFERENCE IMAGE 2



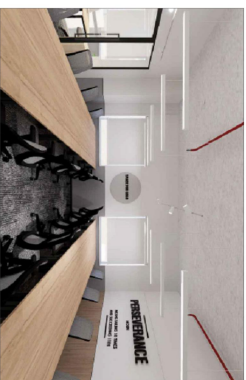
REFERENCE IMAGE 3



REFERENCE
IMAGE 1

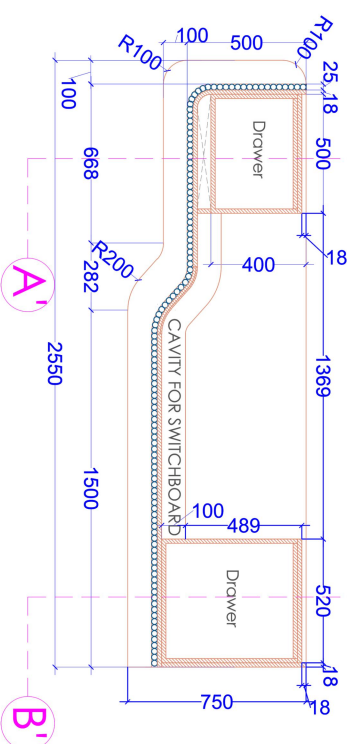
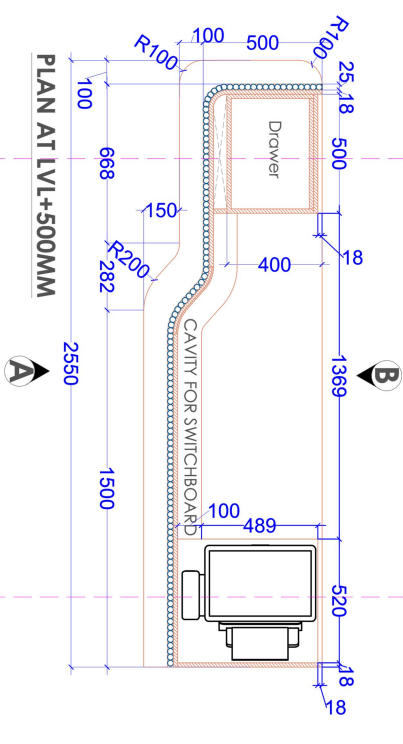
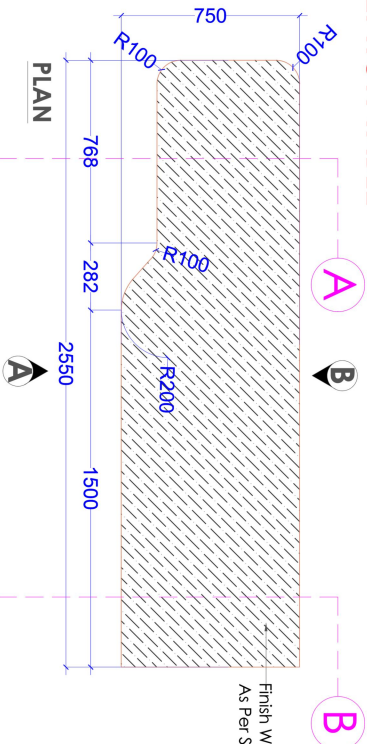


REFERENCE
IMAGE 2



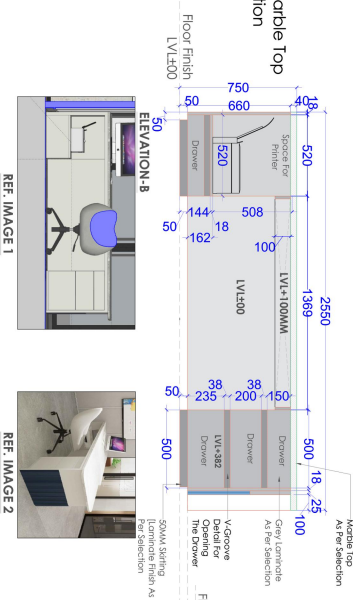
REFERENCE
IMAGE 3

RECEPTION TABLE

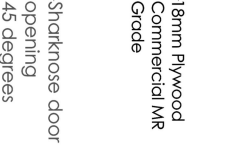
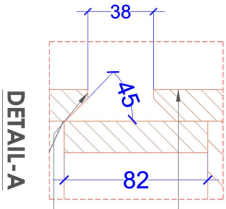
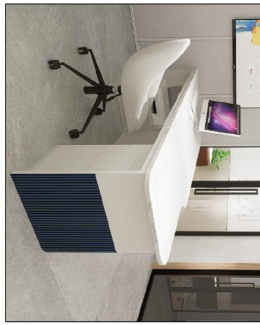
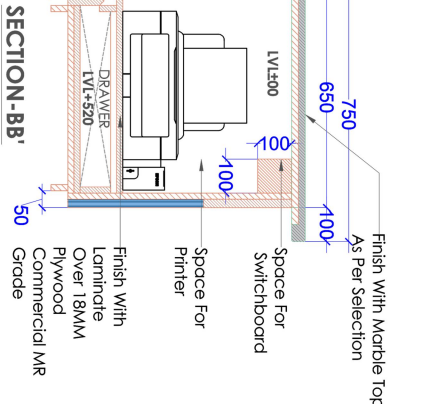
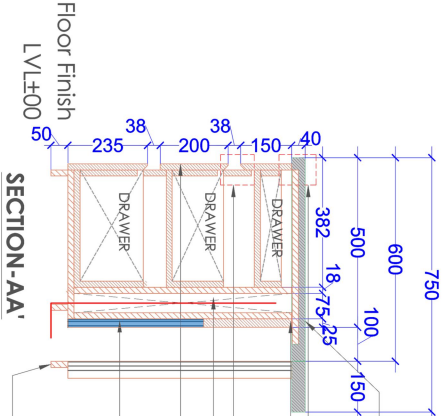


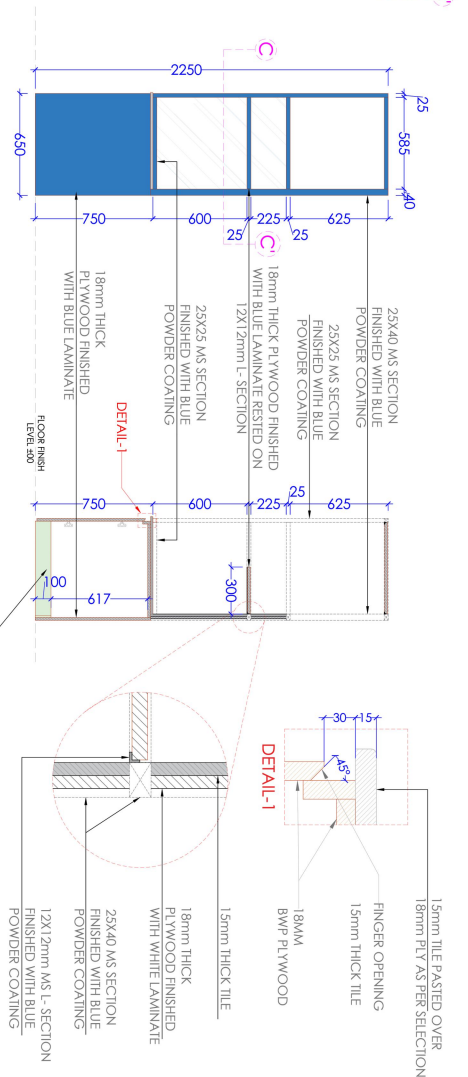
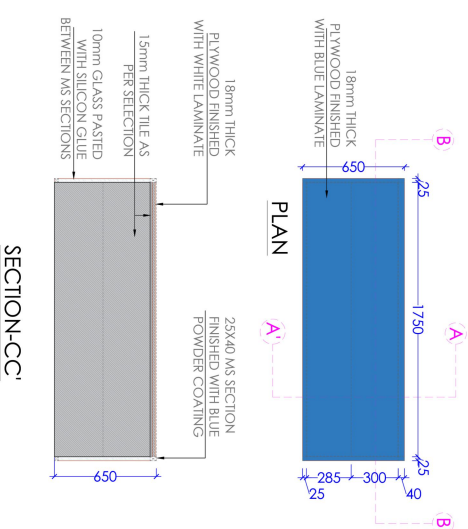
PLAN AT LVL+100MM

RECEPTION TABLE [ELEVATION -B]

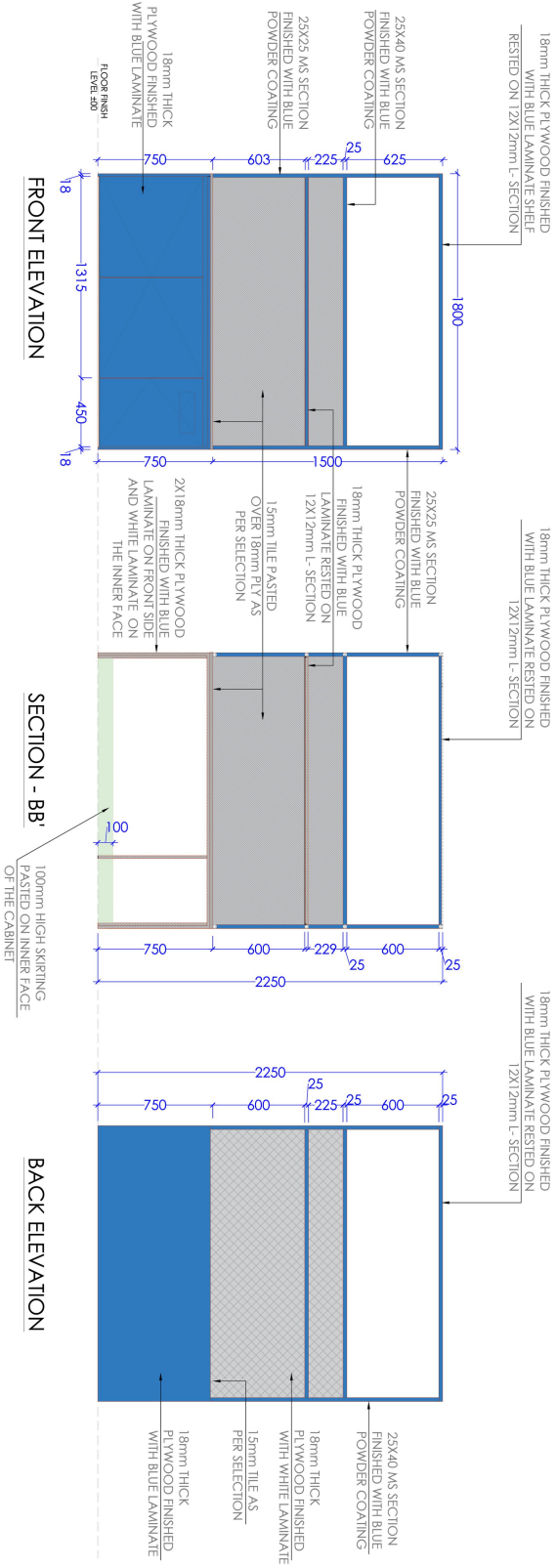


RECEPTION TABLE [ELEVATION -A]





NOTE:- WHITE LAMINATE HAS TO BE USED ON INNER FACE OF THE STORAGE.
25X40mm MS SECTION ONLY USED IN BACK FRAME



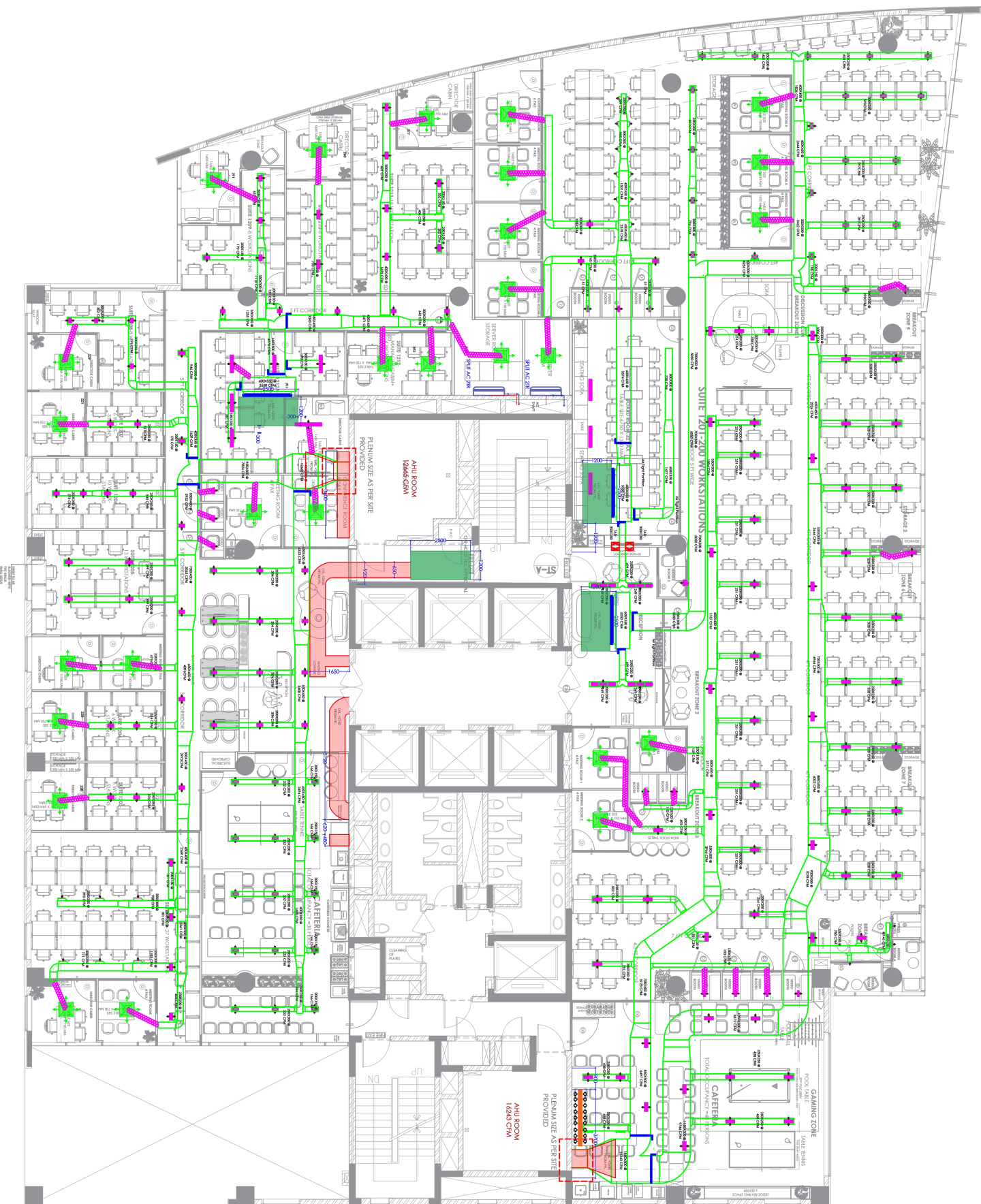
REFERENCE IMAGE



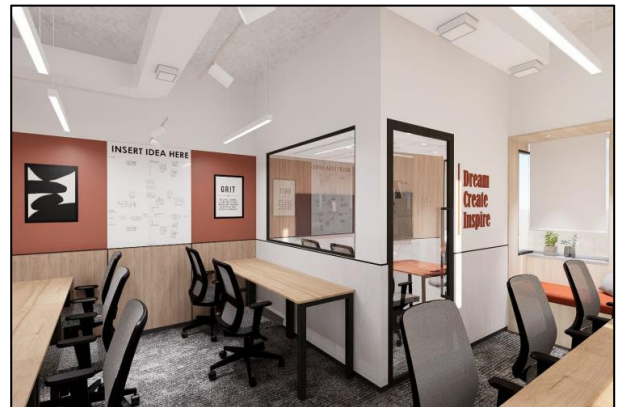
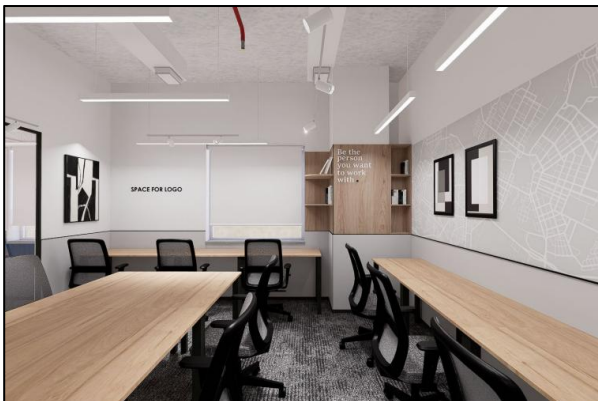
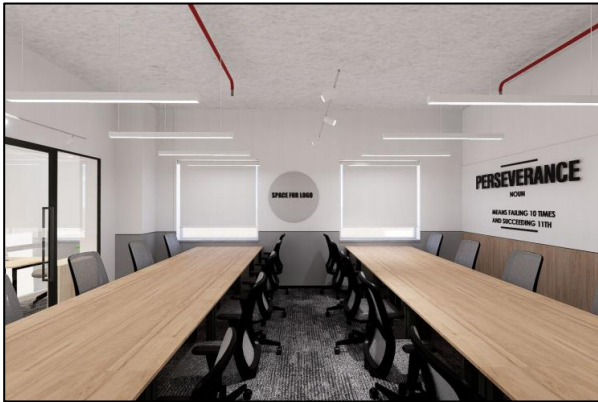
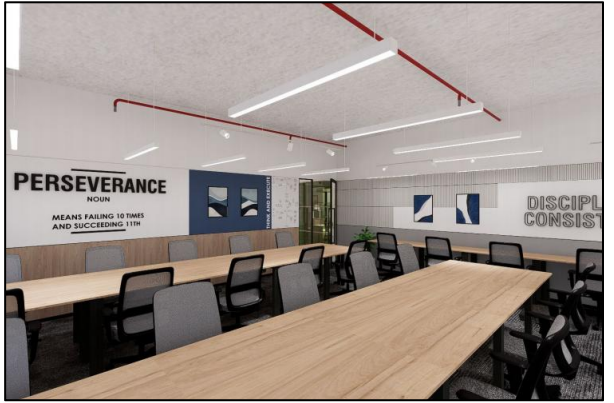
REFERENCE IMAGE







VIEWS



BIBLIOGRAPHY

BOOKS

- The Co-Working Revolution – by Mark Hemphill
- Working in Style: Architecture + Interiors for Work – by Aidan Walker
- Interior Design Illustrated – by Francis D.K. Ching
- The Interior Design Reference & Specification Book – by Chris Grimley and Mimi Love
- Designing Interiors – by Rosemary Kilmer & W. Otie Kilmer
- The Future of the Office – by Peter Cappelli
- The Architecture of Happiness – by Alain de Botton

WEBSITE

- <https://www.archdaily.com>
- <https://www.dezeen.com>
- <https://www.designboom.com>
- <https://www.wework.com>
- <https://www.coworker.com>
- <https://www.ofissquare.com>
- <https://www.indiamart.com> (for product research)
- <https://www.designcurial.com>
- <https://www.creativebloq.com>
- <https://www.behance.net> (for design references)