

# **ECO RESORT AT KALAGARH, PAURI GARWAL, UTTARAKHAND**



**A Thesis Submitted in Partial Fulfillment of the Requirements for  
the Degree of**

**BACHELOR OF ARCHITECTURE**

**by**

**SYED MOZAHIR ABBAS**  
**(Enrollment No. 1190101024)**

**Under the Supervision of**  
**Ar. KUNWAR GHANSHYAM YADAV**

**to the**  
**School of Architecture & planning**  
**BABU BANARSI DAS UNIVERSITY**  
BBD Green City, Faizabad Road, Lucknow

**2023-2024**

## **DECLARATION**

I hereby declare that the work presented in this report entitled **“ECO RESORT KALAGARH AT PAURI GARWAL, UTTARAKHAND”**, was carried out by me. I have not submitted the matter embodied in this report for the award of any other degree or diploma of any other University or Institute. I have given due credit to the original authors/sources for all the words, ideas, diagrams, graphics, computer programs, experiments, results, that are not my original contribution. I have used quotation marks to identify verbatim sentences and given credit to the original authors/sources.

I affirm that no portion of my work is plagiarized, and the experiments and results reported in the report are not manipulated. In the event of a complaint of plagiarism and the manipulation of the experiments and results, I shall be fully responsible and answerable.

Name : Syed Mozahir Abbas  
Enroll. No. : 1190101024  
Thesis Guide: Ar. Kunwar Ghanshyam Yadav

**(Candidate Signature)**



**SCHOOL OF ARCHITECTURE AND PLANNING**  
**BABA BANARSI DAS UNIVERSITY, LUCKNOW (U.P)**

**CERTIFICATE**

I hereby recommend that the thesis entitled “**ECO RESORT KALAGARH AT PAURI GARWAL,UTTRAKHAND**” Under the supervision is the bonafide Work of the students and can be accepted as partial fulfillment of the requirement For the degree of bachelor’s degree in architecture, school of architecture and planning , BBDU , Lucknow.

Signature  
Prof.Mohit kumar Agarwal  
Dean of Department

Signature  
Prof.Sangeeta Sharma  
Head of Department

Recommendation    Accepted  
                                 Not Accepted

Signature  
External Examiner

Signature  
External Examiner

## **ABSTRACT**

The concept of eco resorts has gained significant attention in the hospitality industry as a response to the growing concern for sustainable tourism. This thesis aims to explore the sustainability and environmental practices of an eco-resort through a comprehensive case study.

The research begins by examining the theoretical framework of sustainable tourism and its relevance to the hospitality sector, with a specific focus on eco resorts. Key concepts such as ecological footprint, green building design, waste management, renewable energy, and community engagement will be explored to establish a solid foundation for the study.

Using a qualitative research approach, the case study focuses on an eco-resort located in a prominent tourist destination. Primary data will be collected through interviews with resort management, staff, and guests, as well as on-site observations and document analysis. The research aims to investigate the resort's sustainability practices, including its energy and water conservation initiatives, waste management strategies, use of renewable resources, community involvement, and guest education programs.

The findings of the study will provide a comprehensive understanding of the eco resort's sustainability practices, successes, and challenges. Additionally, the research will assess the impact of these practices on the environment, local community, and guest satisfaction. The study will also identify opportunities for improvement and offer recommendations to enhance the resort's sustainability performance.

The significance of this research lies in its potential to contribute to the broader knowledge base of sustainable tourism and eco resorts. It will shed light on the practical implementation of sustainability practices within the hospitality industry and serve as a valuable resource for industry professionals, policymakers, and researchers seeking to promote environmentally responsible tourism.

Ultimately, this thesis aims to highlight the importance of eco resorts as catalysts for sustainable tourism, showcasing how these establishments can positively contribute to environmental conservation, local community development, and guest experiences. By showcasing a case study, this research aims to inspire other resorts and tourism establishments to adopt similar sustainability practices and contribute to a more sustainable future for the industry.

## **ACKNOWLEDGEMENT**

I am overjoyed to express my deepest gratitude to **PROF. SANGEETA SHARMA** for his Invaluable guidance, unwavering encouragement and steadfast support throughout the Duration of my thesis on a resort Uttarakhand. His esteemed mentorship and continuous Encouragement, from the project's inception to its completion, have been immensely Appreciated and cherished.

I extend my sincere thanks to **AR. MOHIT KUMAR AGARWAL** who graciously served As Dean and **PROF. SANGEETA SHARMA** the esteemed Head of the Department, for Their essential knowledge and insightful ideas shared during juries, which were instrumental In the successful execution of this endeavor.

My deepest thanks also go to **AR. SHAILESH KUMAR YADAV**, who served as thesis Coordinator, providing all the necessary resources and facilities for my work. His invaluable Contribution in conducting meeting and juries at various time and fostering an environment That encouraged the exploration of innovative ideas are greatly appreciated.

Finally, I extend my profound gratitude to my parents and family for their unwavering Encouragement , patience , and understanding throughout this journey.

I feel truly privileged to have had the support and guidance of such remarkable individuals And loved ones, and i will forever cherish their contributions to my success.

## **TABLE OF CONTENTS**

Topics	Page No.
Declaration	ii
Certificate	iii-iv
Abstract	v
Acknowledgement	vi
List of Tables	vii-viii
List of Figures	ix
<b>CHAPTER 1: INTRODUCTION</b>	<b>1-12</b>
1.1 Eco Resort	1
1.2 Need of the study	2
1.3 Project justification	3
4	
1.4 Why Eco Resort as Thesis Project	
1.5 Site Description	6-10
1.5.1 About Kalagarh	7
1.5.2 Geography of Kalagarh	7
1.5.3 Demography	9
1.5.4 Climate	9

1.5.5 Flora Fauna	10
1.6 Aim of The Thesis	11
1.7 Objective	11
1.8 Scope	11
1.9 Limitation	12
 <b>CHAPTER 2: LITERATURE STUDY</b>	 <b>13-17</b>
2.1 Taj Bekal Resort & Spa, Kerala	13
2.1.1 Architectural Features	15
2.2 Shinta Mani wild, Combodia	16
 <b>CHAPTER 3 : CASE STUDY</b>	 <b>18-32</b>
3.1 The Ananta Resort, Udaipur, Rajasthan	18
3.1.1 SWOT Analysis	24
3.2 Taj Rishikesh, Uttarakhand	25
3.2.1 SWOT Analysis	32
 <b>CHAPTER 4 : DESIGN</b>	 <b>33-52</b>
4.1 Concept	33
4.2 Zoning	34
4.3 Norms	36
4.4 Site Plan	39
4.5 Drawings	41

**LIST OF FIGURES**

Chapter	Topic	Page No.
1	Introduction	6-8
	1.1 Site Location	6
	1.2 Site photos	8
2	Literature Study	14-17
	2.1 Views	14
	2.2 Views	17
3	Case study	19-31
	3.1 Views	19
	3.2 Site Plan	20
	3.3 Bedroom View	21
	3.4 2 BHK Plan	21
	3.5 Living room View	22
	3.6 1 BHK Room	22
	3.7 Resort Images	23

	3.8 Site View	26
	3.9 Site Location	27
	3.10 Site Plan	28
	3.11 Details	29
	3.12 Site Views	30
	3.13 Interior Views	31
	Design	33-34
4	4.1 Concept Image	33
	4.2 Zoning	34

# CHAPTER 1: INTRODUCTION

## 1.1 ECO RESORT

An eco resort, also known as an eco-friendly resort or an ecotourism resort, is a type of accommodation that prioritizes sustainability, environmental conservation, and responsible tourism practices. These resorts are designed and operated with a focus on minimizing their impact on the environment while providing guests with a unique and immersive experience in nature.

Features of an Eco Resort:

1. **Sustainable Design:** Eco resorts are typically built using environmentally friendly materials and construction techniques. They may incorporate renewable energy sources such as solar power, wind energy, or geothermal heating and cooling systems. The design often integrates with the natural surroundings, utilizing local materials and blending into the landscape.
2. **Conservation and Biodiversity:** Eco resorts aim to protect and preserve the natural environment in which they are located. They may have initiatives to conserve water and energy, reduce waste, and promote recycling. These resorts often provide opportunities for guests to learn about local ecosystems, wildlife, and conservation efforts.
3. **Responsible Tourism:** Eco resorts prioritize responsible tourism practices, which involve minimizing negative impacts on the local community and culture. They may support local businesses, hire staff from nearby communities, and engage in community development projects. Eco resorts also encourage guests to respect local customs, traditions, and wildlife.
4. **Outdoor Activities:** Eco resorts often offer a range of outdoor activities that allow guests to explore and connect with nature. These may include hiking, wildlife spotting, nature walks, birdwatching, kayaking, snorkeling, or guided tours of nearby natural attractions.
5. **Education and Awareness:** Many eco resorts have educational programs and workshops that aim to raise awareness about environmental issues and promote sustainable living. These activities provide guests with an opportunity to learn about the local ecosystem, conservation efforts, and ways to make a positive impact on the environment.
6. **Organic and Locally Sourced Food:** Eco resorts often prioritize providing guests with organic, locally sourced food options. They may have their own gardens or work closely with local farmers to ensure fresh and sustainable ingredients are used in their restaurants. Some resorts even offer farm-to-table experiences where guests can participate in food harvesting or cooking classes.

Benefits of Staying at an Eco Resort:



1. **Immersive Nature Experience:** Eco resorts are usually located in picturesque natural settings, providing guests with an opportunity to immerse themselves in nature. The serene surroundings and outdoor activities can help reduce stress and promote well-being.
2. **Environmental Consciousness:** By choosing an eco-resort, guests can contribute to environmental conservation and support sustainable tourism practices. They can enjoy their vacation while knowing that their stay has a lower impact on the environment.
3. **Educational Opportunities:** Eco resorts often offer educational programs and experiences that allow guests to learn about the local environment, culture, and sustainability practices. This can be an enriching and educational experience for individuals or families.
4. **Authentic Cultural Experiences:** Many eco resorts are in areas with vibrant local communities and cultures. Staying at an eco-resort can provide opportunities to engage with the local community, learn about their customs, and support local businesses.
5. **Health and Wellness Benefits:** Being in a natural environment has been shown to have numerous health benefits, such as reducing stress, improving mood, and promoting physical activity. Eco resorts often offer wellness activities such as yoga, meditation, spa treatments, or nature-inspired therapies.

Overall, eco resorts offer a unique and sustainable vacation experience for individuals who are passionate about the environment, nature, and responsible travel. They provide an opportunity to relax, reconnect with nature, and contribute to conservation efforts while enjoying a memorable and eco-friendly getaway.

## **1.2 NEED OF THE STUDY**

1. **Environmental Conservation:** Eco resorts prioritize sustainable practices and minimize their impact on the environment. By studying eco resorts, we can learn about innovative approaches to reduce energy consumption, conserve water, manage waste, and protect fragile ecosystems. This knowledge can be applied to other industries and developments to promote environmental conservation on a broader scale.
2. **Sustainable Tourism:** Tourism can have significant environmental and social impacts on destinations. Studying eco resorts allows us to explore sustainable tourism models that balance the economic benefits of tourism with environmental and cultural preservation. By understanding how eco resorts integrate responsible tourism practices, we can promote sustainable tourism development in other areas as well.
3. **Education and Awareness:** Eco resorts often incorporate educational programs and activities that raise awareness about environmental issues, conservation efforts, and sustainable living. By studying eco resorts, we can better understand how to engage and educate guests, local communities, and stakeholders about the importance of environmental stewardship and sustainable practices.

4. **Economic Benefits:** Eco resorts can contribute to the local economy by providing employment opportunities and supporting local businesses, artisans, and farmers. By studying the economic aspects of eco resorts, we can gain insights into their potential for sustainable job creation, income generation, and community development.
5. **Sustainable Architecture and Design:** Eco resorts showcase innovative architectural and design approaches that prioritize energy efficiency, use of renewable materials, and integration with the natural environment. By studying eco resort design, we can learn from their sustainable design strategies and apply them to other architectural projects, promoting green building practices in the industry.
6. **Social and Cultural Impact:** Eco resorts often emphasize the preservation and celebration of local culture, traditions, and heritage. By studying eco resorts, we can understand how they engage with local communities, promote cultural exchange, and empower indigenous populations. This knowledge can be applied to foster cultural sustainability in other tourism developments.

Overall, studying eco resorts helps us advance sustainable development practices, raise environmental awareness, promote responsible tourism, and contribute to the preservation of natural and cultural heritage. It provides insights into innovative approaches to minimize environmental impacts, while maximizing the social and economic benefits of tourism.

## **1.3 PROJECT JUSTIFICATION**

1. **Environmental Conservation:** An eco resort project serves as a model for sustainable development, incorporating green building practices, renewable energy sources, and responsible tourism strategies. It aims to minimize environmental impact, protect natural habitats, and promote conservation of local ecosystems and biodiversity. By creating an eco-resort, we can demonstrate a commitment to environmental stewardship and inspire others to adopt sustainable practices.
2. **Sustainable Tourism:** The tourism industry often puts significant pressure on natural resources and local communities. An eco resort project offers a sustainable tourism alternative by showcasing responsible tourism practices, supporting local economies, and fostering cultural preservation. It provides a platform to educate guests about the importance of sustainable travel, encouraging them to make informed choices and support destinations that prioritize environmental and social well-being.
3. **Community Development:** An eco resort project can have positive socio-economic impacts on the local community. It creates employment opportunities, stimulates entrepreneurship, and supports local businesses, artisans, and farmers. By involving the community in the project's development and operations, it fosters a sense of ownership

and empowerment. The project can also contribute to infrastructure development, education, healthcare, and other community needs.

4. **Education and Awareness:** An eco resort project offers a platform for environmental education and awareness. It can incorporate interpretive centers, nature-based activities, and workshops that engage guests and local communities in sustainability-focused learning experiences. By raising awareness about environmental challenges and promoting sustainable living, the project can inspire behavioral change and cultivate a sense of environmental responsibility among its stakeholders.
5. **Market Demand and Competitive Advantage:** There is a growing global demand for sustainable tourism experiences. Travelers increasingly seek eco-friendly and socially responsible accommodations that align with their values. By developing an eco-resort, you tap into a niche market and gain a competitive advantage by differentiating your project from conventional resorts. This can attract environmentally conscious travelers, bolstering your business and positioning your project as a leader in sustainable tourism.
6. **Research and Innovation:** An eco resort project provides an opportunity for research and innovation in sustainable architecture, renewable energy, waste management, and resource conservation. It can serve as a living laboratory for testing and implementing cutting-edge technologies, methodologies, and best practices. By conducting research within the project, you contribute to the broader knowledge and understanding of sustainable development in the tourism sector.

By justifying an eco-resort project based on environmental conservation, sustainable tourism, community development, education, market demand, and research opportunities, you can demonstrate its significance and positive impact. Emphasizing the unique benefits and contributions of your eco resort project strengthens its value proposition and underscores the importance of its implementation.

## **1.4 WHY ECO RESORT AS THESIS PROJECT**

Choosing an eco-resort as a thesis project in architecture offers several compelling reasons:

1. **Relevance and Timeliness:** The focus on sustainability and environmentally conscious design is increasingly important in the field of architecture. As the world grapples with environmental challenges, designing an eco-resort allows you to address these pressing issues and contribute to sustainable development.
2. **Interdisciplinary Approach:** An eco resort project requires a multidisciplinary approach, incorporating elements of architecture, environmental science, landscape design, and

sustainable engineering. It allows you to explore the integration of various disciplines and gain a holistic understanding of how different components come together to create a sustainable and functional resort.

3. **Innovation and Creativity:** Designing an eco-resort challenges you to think creatively and innovatively. It encourages you to explore new materials, construction techniques, energyefficient systems, and sustainable design strategies. This project provides an opportunity to push the boundaries of traditional architectural practices and find innovative solutions that blend aesthetics, functionality, and sustainability.
4. **Real-World Impact:** An eco resort thesis project offers the potential for real-world impact. By designing a sustainable resort, you contribute to the promotion of responsible tourism and environmental conservation. Your project can serve as a showcase for sustainable design principles, inspiring others in the industry to adopt similar practices.
5. **Professional Growth:** Undertaking an eco-resort project for your thesis allows you to develop specialized knowledge and skills in sustainable architecture and green building practices. This expertise can enhance your professional profile and make you wellpositioned to work on future sustainable projects or pursue a career in sustainable design.
6. **Research Opportunities:** An eco resort thesis project provides ample research opportunities. You can explore topics such as sustainable materials, energy-efficient systems, water conservation, waste management, and the integration of nature within architectural design. Conducting research within the context of your thesis project adds depth to your work and contributes to the existing body of knowledge in the field.
7. **Ethical Considerations:** Choosing to design an eco-resort demonstrates a commitment to ethical architecture. By prioritizing sustainability, environmental conservation, and responsible tourism practices, you align your project with ethical and socially responsible design principles. This allows you to contribute positively to society and promote a more sustainable and resilient future.

In summary, selecting an eco-resort as your thesis project in architecture offers the opportunity to address pressing environmental concerns, showcase your creativity and innovation, make a realworld impact, develop specialized skills, engage in research, and contribute to the ethical practice of architecture. It is a compelling and relevant choice that aligns with the evolving needs of industry and society.

## 1.5 SITE DESCRIPTION

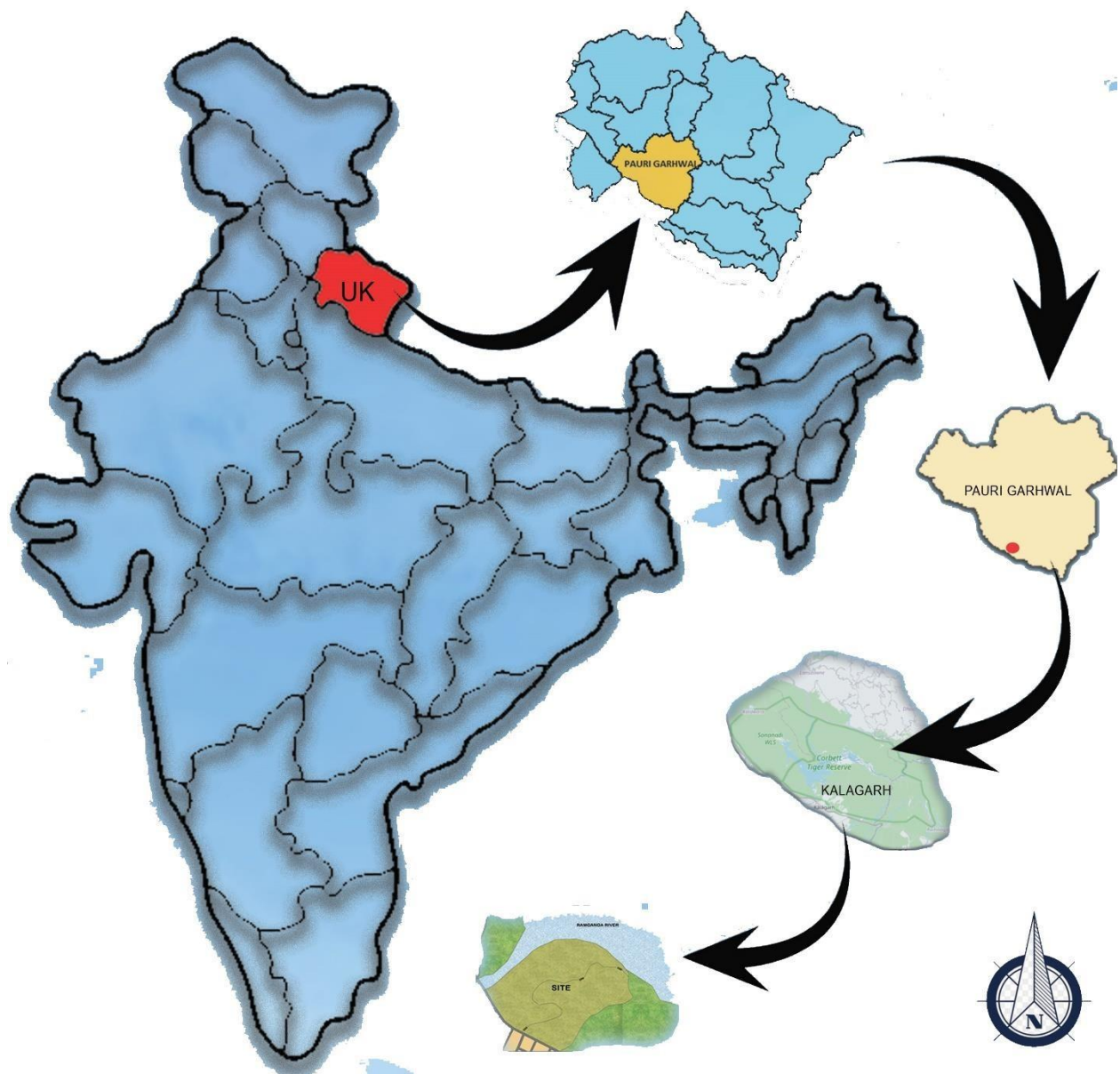


Fig. 1.1 Site Location

**LOCATION – KALAGARH, PAURI GARWAL , UTTARAKHAND**

### **1.5.1 ABOUT KALAGARH**

Kalagarh is a small town located in Pauri Garhwal district of Uttarakhand state. This place is situated on the banks of the river Ramganga. A dam is built on the river Ramganga in Kalagarh, which is known as the Kalagarh dam. This dam is also called Ramganga Dam, which is about 7 km away from Kalagarh. Nearby is Kalagarh Gate, which is one of the gates of Corbett National Park. Visitors can enjoy the jungle safari to roam in the park through Kalagarh Gate.

Kalagarh is a small town located in Uttarakhand state. A dam is built on the river Ramganga in Kalagarh, which is known as the Kalagarh dam. This dam is also called Ramganga Dam. Visitors visit Kalagarh and enjoy watching this dam. Nearby is Kalagarh Gate, which is one of the gates of Corbett National Park. Visitors can enjoy the jungle safari to roam in the park through kalagarh.

### **1.5.2 GEOGRAPHY OF KALAGARH**

Kalagarh is slightly uphill. As such, it experiences heavy rainfall, hot summers, and cold winters. The temperature in summer season may go high up to 40 degrees in this town while winter experience falls in mercury with temperature in the range of 4 to 20 degrees Celsius. Rainfall may be heavy in this region during the monsoon months. October to March is the best time to visit this area to enjoy its natural beauty and sightseeing. Most of the tourists visit Kalagarh during this phase of time only.

Since Kalagarh touches the boundary of Jim Corbett Park, it is an excellent tourist destination. The city is adjacent to Ranmagar which has all sorts of accommodations and travelling facilities for the tourists. The main attractions attached to this small town are Kalagarh Dam, gate to the reserve and Kalagarh Forest Reserve.





Fig. 1.2 Site photos

### 1.5.3. DEMOGRAPHY

Area (2020)	549.08 km <sup>2</sup>
Population (2020)	31156
Population Density	people per km <sup>2</sup>
Male Population	15330
Female Population	15826
Nearest airport & distance (Aerial)	Dehradun Airport, 76.49 km
Nearest Railway Station & Distance (Aerial)	Kotdwara, 26.11 km

### 1.5.4 CLIMATE

- In Pauri Garwal district, the summers are short, hot, and wet; the winters are short, cold, and dry; and it is mostly clear year round. Over the course of the year, the temperature typically varies from 4°C to 33°C and is rarely below 1.6°C or above 36°C.
- The hot season lasts for 2.4 months, from April 23 to July 5, with an average daily high temperature above 85°F. The hottest month of the year in Pauri is June, with an average high of 90°F and low of 68°F.
- The cool season lasts for 2.9 months, from November 30 to February 24, with an average daily high temperature below 67°F. The coldest month of the year in Pauri is January, with an average low of 40°F and high of 61°F.

### 1.5.5 FLORA FAUNA

Pauri Garhwal is a district located in the state of Uttarakhand, India. It is known for its scenic beauty and rich biodiversity. Here are some examples of flora and fauna found in Pauri Garhwal:



**Flora:**

1. Deodar (*Cedrus deodara*): This is one of the dominant tree species found in the region, known for its majestic stature and aromatic wood.
2. Pine (*Pinus* spp.): Various species of pine trees, such as Chir pine (*Pinus roxburghii*) and blue pine (*Pinus wallichiana*), can be found in the forests of Pauri Garhwal.
3. Oak (*Quercus* spp.): Different types of oak trees, including Banj oak (*Quercus leucotrichophora*) and Kharsu oak (*Quercus semecarpifolia*), are found in the higher altitude regions of the district.
4. Rhododendron (*Rhododendron* spp.): Pauri Garhwal is home to several species of rhododendron, which bloom in vibrant colors during the spring season.
5. Maple (*Acer* spp.): Some species of maple trees, such as Himalayan maple (*Acer caesium*) and Field maple (*Acer campestre*), can be found in the forests of Pauri Garhwal.

**Fauna:**

1. Himalayan Black Bear (*Ursus thibetanus*): Pauri Garhwal is home to the Himalayan black bear, a large mammal found in the higher altitude regions.
2. Musk Deer (*Moschus* spp.): Musk deer, known for their musk glands, can be found in the forests of Pauri Garhwal.
3. Barking Deer (*Muntiacus muntjak*): Also known as the Indian muntjac, this small deer species is found in the district's forests.
4. Leopard (*Panthera pardus*): The leopard is one of the big cat species found in the region, although they are elusive and rarely spotted.
5. Monal Pheasant (*Lophophorus impejanus*): The colorful and majestic Himalayan Monal, the state bird of Uttarakhand, can be found in the higher altitude areas of Pauri Garhwal.
6. Koklass Pheasant (*Pucrasia macrolopha*): This pheasant species with a distinctive crest is also found in the forests of Pauri Garhwal.
7. Red Fox (*Vulpes vulpes*): The red fox, a small carnivore, is found in various habitats across the district.
8. Various bird species: Pauri Garhwal is home to a wide variety of bird species, including thrushes, flycatchers, eagles, and vultures.

These are just a few examples of the flora and fauna that can be found in Pauri Garhwal. The district's diverse ecosystems and protected areas contribute to its rich biodiversity.

## **1.6 AIM OF THE THESIS**

To design an Eco resort not only for leisure but will offer tourist a complete eco experience.

## **1.7 OBJECTIVES**

- The main objective of this proposal is-
- Provide a recreational environment for varieties of facilities and functions.
- Comfortable design which portrays an environment of leisure and promotes interaction with nature.
- Respond to climatic and energy consumption issues raised by present day architecture through sustainable design.
- Designing with the suitable perspective to the surrounding environment and without the environmental disadvantages.
- Locating buildings with public spaces and common facilities for encouraging social interaction.
- Cost effective and functional design.

## **1.8 SCOPE**

- The scope of the project is the eco resort with recreational facilities.
- They intended to go some distance from the city so that they can enjoy the environment.
- The project provides a lot of scope for site planning and landscaping.
- The project provides an outlet to study the local architecture: an exercise in the evolution of an architectural vocabulary which takes the inspiration from the local and architecture, keeping in mind of the climatic factors, behavioral pattern and the user attitude.
- It also provides the opportunity to study the local culture and heritage.

## 1.9 LIMITATION

- There will be limited research and study on feasibility of project and detailed site suitability will not be analyzed.
- The project will not cover details related to landscape design though research will do according to architectural requirement.
- The project will not focus on constructural analysis of built structures of resorts, although structural consultation will be made, and it will not be sufficient.

Detailed environment assessment will not be done due to limitation of knowledge in this field, and it is not our primary focus.

## **CHAPTER 2: LITERATURE STUDY**

### **2.1 TAJ BEKAL RESORT & SPA, KERALA**

The Taj Bekal Resort & Spa is a luxurious eco resort located in Kerala, India. Situated in the serene and picturesque destination of Bekal, the resort offers a unique blend of luxury, sustainability, and cultural immersion. Here are some key features and highlights of the Taj Bekal Resort & Spa:

1. **Location:** Nestled amidst the lush greenery and backwaters of Bekal, the resort provides a tranquil and scenic setting. The pristine beaches, swaying coconut trees, and serene backwaters create a serene ambiance for guests to unwind and connect with nature.
2. **Sustainable Design:** The Taj Bekal Resort & Spa incorporates sustainable design principles to minimize its environmental impact. The architecture seamlessly blends with the natural surroundings, incorporating local materials, traditional craftsmanship, and eco-friendly construction techniques.
3. **Luxurious Accommodations:** The resort offers a range of luxurious accommodation, including villas and rooms with contemporary design and modern amenities. The spacious rooms provide panoramic views of the surroundings, creating a sense of harmony between the indoors and outdoors.
4. **Ayurvedic Spa:** The Jiva Spa at Taj Bekal Resort & Spa offers a range of rejuvenating and holistic Ayurvedic treatments. Guests can indulge in therapeutic massages, yoga sessions, and wellness therapies, enhancing their well-being and relaxation.
5. **Culinary Experiences:** The resort boasts multiple dining options, offering a culinary journey through the flavors of Kerala and beyond. Guests can savor traditional Kerala

cuisine, coastal delicacies, and international dishes prepared with locally sourced ingredients, supporting sustainability, and promoting local flavors.

6. **Cultural Immersion:** Taj Bekal Resort & Spa provides opportunities for guests to immerse themselves in the local culture and heritage. Cultural performances, art exhibitions, and curated experiences offer a glimpse into the rich traditions and customs of Kerala.
7. **Eco-friendly Practices:** The resort is committed to sustainable practices, including energy conservation, waste management, and water efficiency. It utilizes renewable energy sources, implements recycling programs, and emphasizes responsible water usage to minimize its ecological footprint.
8. **Recreational Activities:** Taj Bekal Resort & Spa offers a range of recreational activities to cater to guests' interests. These include boating in the backwaters, exploring nearby villages, visiting historic sites, cycling, and experiencing traditional fishing techniques.

The Taj Bekal Resort & Spa in Kerala exemplifies the combination of luxury, sustainability, and cultural immersion. With its stunning location, sustainable design, luxurious amenities, and commitment to responsible practices, it provides guests with a memorable and environmentally conscious resort experience.

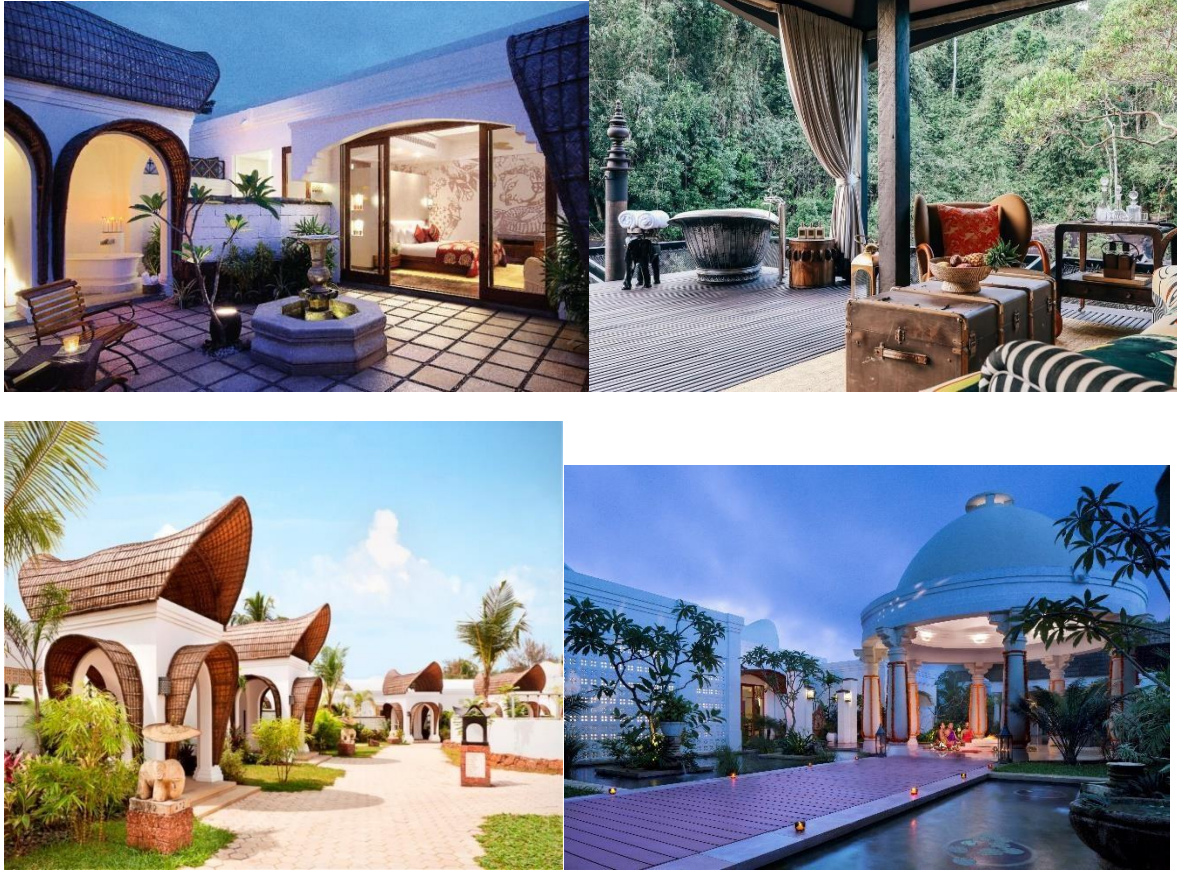


Fig 2.1 Views

- ➔ Location – BEKAL, KERALA
- ➔ Distance from Mangalore Airport : 76 km (approx.)
- ➔ Distance from Kasaragod Railway Station: 12 km (approx.).

### 2.1.1 ARCHITECTURAL FEATURES

The architectural features of Taj Bekal Resort & Spa in Kerala showcase a harmonious blend of traditional elements, local materials, and contemporary design. Here are some notable architectural features of the resort:

1. **Vernacular Architecture:** The resort's design draws inspiration from the traditional architecture of Kerala, known as "Nalukettu," characterized by sloping roofs, wooden pillars, and intricate carvings. This vernacular style is integrated into the design, creating a sense of cultural identity and connection to the local context.
2. **Courtyard Design:** The resort follows a courtyard layout, reminiscent of traditional Kerala homes. This design approach creates a central open space surrounded by the different wings of the resort, allowing for natural ventilation, ample daylight, and a sense of community within the resort.
3. **Sustainable Materials:** Local materials, such as laterite stone, wood, and bamboo, are prominently used in the construction of the resort. These materials not only reflect the region's architectural heritage but also contribute to sustainable practices by reducing carbon footprint and promoting local craftsmanship.
4. **Water Features:** The architectural design incorporates water features like ponds, reflecting pools, and cascading waterfalls. These water elements not only enhance the aesthetic appeal but also create a soothing and serene ambiance, promoting relaxation and tranquility for guests.
5. **Open Spaces and Panoramic Views:** The resort's design maximizes the use of open spaces and offers panoramic views of the surrounding natural landscape. Large windows, balconies, and terraces provide unobstructed views of the backwaters, lush greenery, and the Arabian Sea, creating a seamless connection between the indoors and outdoors.
6. **Eco-friendly Design:** The architecture of Taj Bekal Resort & Spa embraces eco-friendly design principles. Passive cooling techniques, such as cross-ventilation and shading devices, are incorporated to reduce the reliance on artificial cooling systems. The use of natural materials, sustainable construction practices, and energy-efficient systems further contribute to the resort's eco-friendly design.
7. **Integration with Nature:** The resort's architecture seamlessly integrates with the natural surroundings. The design takes advantage of the site's topography, vegetation, and water bodies, incorporating them into the overall aesthetic and guest experience. This integration

with nature enhances the sense of serenity and tranquility, providing a truly immersive and sustainable resort experience.

## **2.2 SHINTA MANI WILD, COMBODIA**

Shinta Mani Wild is a unique and extraordinary eco-resort located in Cambodia, nestled within the lush and untouched wilderness of the Cardamom Mountains. Designed by renowned architect Bill Bensley, this resort offers a one-of-a-kind experience that combines luxury with a deep commitment to conservation. Here are some notable features of Shinta Mani Wild:

1. **Tented Camp Concept:** Shinta Mani Wild embraces a tented camp concept, where guests stay in luxurious and beautifully designed tents that blend seamlessly with the natural surroundings. These spacious and elegantly furnished tents provide a comfortable and immersive experience in the heart of the wilderness.
2. **Sustainable Design:** The architecture of Shinta Mani Wild reflects a strong emphasis on sustainability. The resort's structures are built using locally sourced materials, with minimal impact on the environment. The design seamlessly integrates with the surrounding landscape, ensuring a minimal carbon footprint and preserving the natural beauty of the area.
3. **Remote Location:** Shinta Mani Wild is located in a remote and untouched part of the Cardamom Mountains, providing guests with a truly secluded and immersive experience. The resort is accessible only by a zipline or a scenic boat ride along the river, enhancing the sense of adventure and exclusivity.
4. **Conservation Focus:** Shinta Mani Wild is dedicated to the conservation and protection of the Cardamom Mountains' unique ecosystem. The resort actively engages in conservation initiatives, such as wildlife monitoring, reforestation projects, and community-based sustainable development. Guests have the opportunity to learn about these efforts and contribute to the conservation efforts during their stay.
5. **Wildlife Encounters:** The resort offers a range of activities that allow guests to connect with the incredible biodiversity of the region. Guided hikes, boat safaris, and wildlife spotting excursions provide opportunities to encounter rare and endangered species, including gibbons, Asian elephants, and a variety of bird species.
6. **Adventure Experiences:** Shinta Mani Wild provides a range of adventure experiences that allow guests to immerse themselves in the natural surroundings. Activities such as kayaking, paddleboarding, and trekking offer a chance to explore the pristine wilderness and discover hidden gems within the landscape.



7. Culinary Excellence: The resort offers exceptional dining experiences with a focus on sustainability and locally sourced ingredients. Guests can enjoy gourmet meals prepared by skilled chefs, featuring a fusion of international and local flavors. The resort also supports local communities by sourcing ingredients from nearby villages and promoting traditional culinary practices.

Shinta Mani Wild is a testament to the harmonious coexistence of luxury and environmental conservation. Its unique design, commitment to sustainability, remote location, conservation focus, wildlife encounters, adventure experiences, and culinary excellence make it a truly remarkable and unforgettable eco-resort in Cambodia.

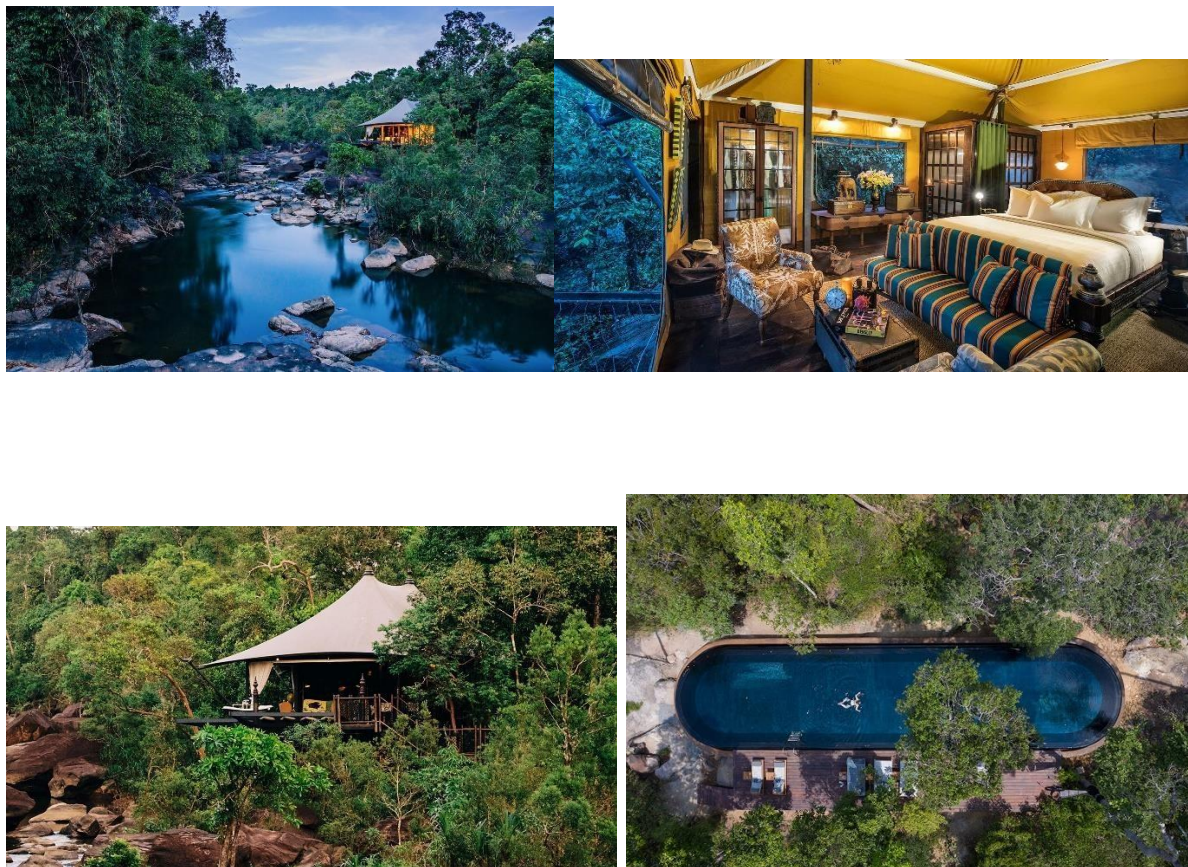


Fig 2.2 views

➔ Location - COMBODIA

➔ Distance from Sihanouk International Airport : 98 km (approx.) □ Distance from Sihanoukville Railway Station: 9.8 km (approx).

## **CHAPTER 3: CASE STUDY**

### **3.1 THE ANANTA RESORT, UDAIPUR, RAJASTHAN**

The Ananta Resort in Udaipur, Rajasthan, is a luxurious retreat that showcases the rich cultural heritage and architectural beauty of the region. With its regal charm and stunning views of the Aravalli Hills, the resort offers a blend of traditional Rajasthani design elements with contemporary luxury. Here are some notable architectural features of The Ananta Resort:

1. **Rajasthani Architecture:** The resort's architecture draws inspiration from the traditional palaces and havelis (mansions) of Rajasthan. The use of intricate carvings, arches, domes, and jharokhas (balconies) reflects the opulence and grandeur associated with Rajasthani architecture.
2. **Courtyard Design:** The resort follows a courtyard design, featuring a central open space surrounded by accommodation wings, restaurants, and recreational areas. The courtyard is often adorned with lush gardens, water features, and seating areas, creating a serene and inviting ambiance for guests.
3. **Use of Local Materials:** The Ananta Resort utilizes local materials, such as sandstone and marble, which are characteristic of Rajasthani architecture. These materials not only lend a sense of authenticity to the design but also showcase the region's traditional craftsmanship.
4. **Ornate Facades and Interiors:** Elaborate and ornate facades are a distinctive feature of The Ananta Resort. Intricate stone carvings, floral motifs, and filigree work adorn the exteriors, creating a visually stunning and regal appearance. The interiors are equally luxurious, with rich fabrics, handcrafted furniture, and traditional Rajasthani decor elements.
5. **Water Features:** Water features play a significant role in the architectural design of The Ananta Resort. Reflecting pools, fountains, and cascading waterfalls add an element of tranquility and serenity to the surroundings, enhancing the overall ambiance of the resort.
6. **Rooftop Terraces:** The resort boasts rooftop terraces that offer panoramic views of the Aravalli Hills and the surrounding landscape. These terraces provide guests with a vantage point to admire the breathtaking beauty of Udaipur and enjoy the mesmerizing sunsets that Rajasthan is renowned for.
7. **Landscaped Gardens:** The Ananta Resort is surrounded by beautifully landscaped gardens that showcase a variety of indigenous plants, flowers, and trees. These gardens contribute

to the resort's serene atmosphere, providing guests with spaces to relax, stroll, and appreciate nature.

8. Integration of Pools: The resort features multiple swimming pools that are seamlessly integrated into the architectural design. These pools are often surrounded by lush greenery, sun decks, and lounging areas, offering guests a refreshing and luxurious experience.

The architectural features of The Ananta Resort combine the regal elegance of Rajasthani architecture with modern amenities and comforts. The use of local materials, intricate designs, courtyard layouts, water features, rooftop terraces, landscaped gardens, and pool integration create a visually appealing and culturally immersive environment for guests to enjoy their stay in Udaipur, Rajasthan.



Fig 3.1 views

- ➔ Location: Village Bujhda, Tehsil Girwa, Kodyat Road, Udaipur, Rajasthan. □ Distance from Maharana Pratap Airport: 35.5 km (approx.) □ Distance from Udaipur Railway Station: 10.1 km (approx.).
- ➔ Distance from Udaipur city: 7km (approx.)



- ➔ Spread across 90 acres of lush greenery, the resort encompasses 182 contemporary villas.
- ➔ Its premium gateway resort surrounded by the Aravalli's.
- ➔ Ananta Udaipur has international standard spa naturopathy, Swedish spa thrapples, oriental spa, yoga, meditation etc.
- ➔ Two eclectic dining outlets
- ➔ Special kids' activity area
- ➔ Outdoor swimming pool
- ➔ Spa and fitness center
- ➔ Largest divisible banquet halls in Rajasthan.



Fig 3.2 Site plan



Fig 3.3 bedroom view

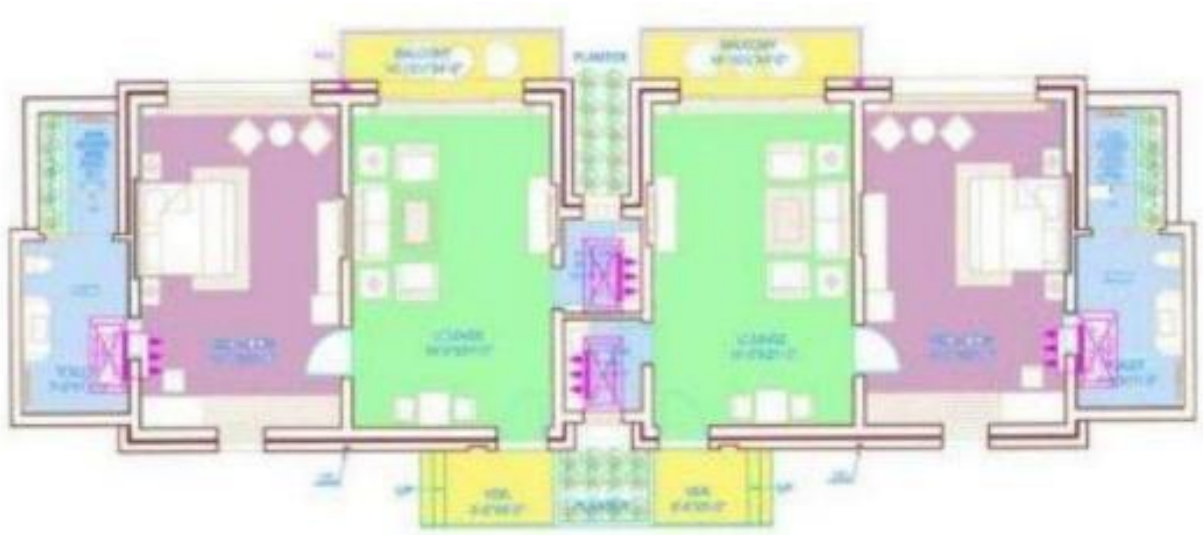


Fig 3.4 2 BHK plan



Fig 3.5 living room view



Fig 3.6 1 BHK Room





Fig 3.7 resort images



### 3.1.1 SWOT ANALYSIS

#### **Strengths:**

1. **Location:** Ananta Resort is situated in Udaipur, a popular tourist destination known for its rich cultural heritage and scenic beauty.
2. **Amenities and Facilities:** The resort offers a range of amenities and facilities, such as spacious rooms, swimming pool, spa, restaurants, and conference facilities, providing a comfortable and convenient stay for guests.
3. **Landscaping and Ambience:** The resort boasts well-maintained and aesthetically pleasing landscaping, creating a serene and relaxing atmosphere for visitors.
4. **Customer Service:** Ananta Resort has a reputation for providing excellent customer service, ensuring guest satisfaction and loyalty.
5. **Recreational Activities:** The resort offers various recreational activities, such as indoor games, outdoor sports, and cultural performances, enhancing the overall guest experience.

#### **Weaknesses:**

1. **Pricing:** The resort's pricing may be relatively higher compared to other accommodations in the area, making it less accessible to budget-conscious travelers.
2. **Distance from City Center:** Ananta Resort is located outside the city center, which may pose challenges for guests who prefer to be closer to the main tourist attractions and amenities.
3. **Limited Local Experience:** Since the resort is situated away from the city, guests may miss out on experiencing the local culture and attractions of Udaipur.

#### **Opportunities:**

1. **Market Growth:** Udaipur's tourism industry is growing steadily, presenting opportunities for Ananta Resort to attract more visitors and increase occupancy rates.
2. **Diversification of Offerings:** The resort can explore expanding its services and offerings, such as organizing local tours, adventure activities, or themed events, to cater to different customer preferences.
3. **Collaboration with Local Businesses:** Partnering with local businesses, such as tour operators or cultural organizations, can enhance the guest experience and provide unique offerings.

**Threats:**

1. **Competition:** Udaipur has a competitive hospitality industry, with numerous hotels and resorts vying for tourists' attention. Ananta Resort needs to differentiate itself effectively to remain competitive.
2. **Economic Factors:** Economic downturns or fluctuations can impact the tourism industry, leading to reduced travel and lower demand for accommodation.
3. **Online Reviews and Reputation:** Negative online reviews or a poor reputation can significantly impact the resort's image and affect bookings and customer perception.

It's important to note that this SWOT analysis is a general assessment and may not capture all specific factors and dynamics affecting Ananta Resort in Udaipur. Conducting a detailed analysis based on current market conditions and specific business factors would provide more accurate insights.

### **3.2 TAJ RISHIKESH, UTTARAKHAND**

Taj Rishikesh is a luxury resort located in Rishikesh, Uttarakhand, India. Here's an overview of Taj Rishikesh and its features:

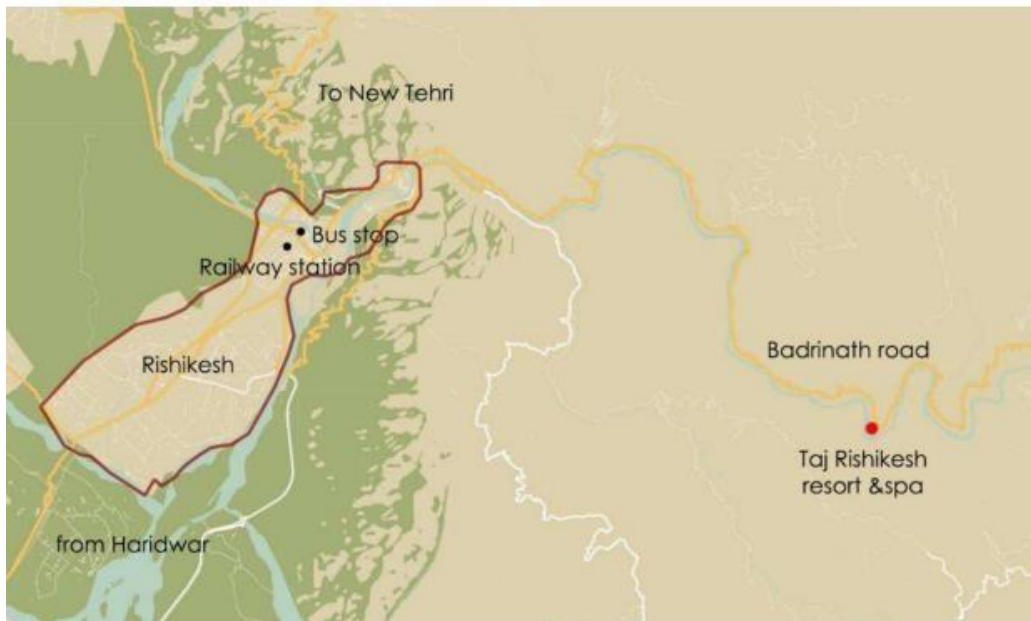
1. **Location:** Taj Rishikesh is situated in the scenic town of Rishikesh, known as the "Yoga Capital of the World" and nestled in the foothills of the Himalayas. The hotel enjoys a picturesque setting amidst the natural beauty of the region.
2. **Accommodation:** The hotel offers a range of luxurious and well-appointed rooms and suites that provide modern amenities and comfort. The rooms are designed to offer scenic views of the surrounding landscapes.
3. **Dining Options:** Taj Rishikesh provides guests with multiple dining options, including a specialty restaurant, an all-day dining restaurant, and a bar. The restaurants offer a variety of cuisines, including Indian, international, and local dishes, catering to diverse tastes.
4. **Wellness and Spa:** The hotel features a wellness center and a spa where guests can indulge in rejuvenating treatments and therapies. The spa is designed to offer relaxation, healing, and wellness experiences, drawing inspiration from traditional Indian practices.
5. **Recreational Facilities:** Taj Rishikesh offers various recreational facilities to ensure a memorable stay for guests. These may include a swimming pool, fitness center, outdoor activities, and access to nearby adventure sports such as white-water rafting and trekking.

6. Events and Conferences: The hotel provides state-of-the-art facilities for hosting events, conferences, and social gatherings. It has spacious meeting rooms and banquet halls equipped with modern technology and amenities to cater to the needs of business and leisure travelers.
7. Sustainable Practices: Taj Rishikesh is committed to sustainability and eco-friendly practices. The hotel may incorporate measures such as energy conservation, waste management, and using local and organic products to minimize its environmental impact.
8. Taj Hospitality: Taj Hotels is known for its world-class hospitality and personalized service. Taj Rishikesh aims to provide a memorable and enriching experience to its guests through attentive staff, warm hospitality, and attention to detail.

It's important to note that specific details about Taj Rishikesh, such as the number of rooms, specific dining options, and facilities, may vary. It is advisable to visit the official website or contact Taj Rishikesh directly for the most up-to-date and accurate information.



Fig 3.8 site view



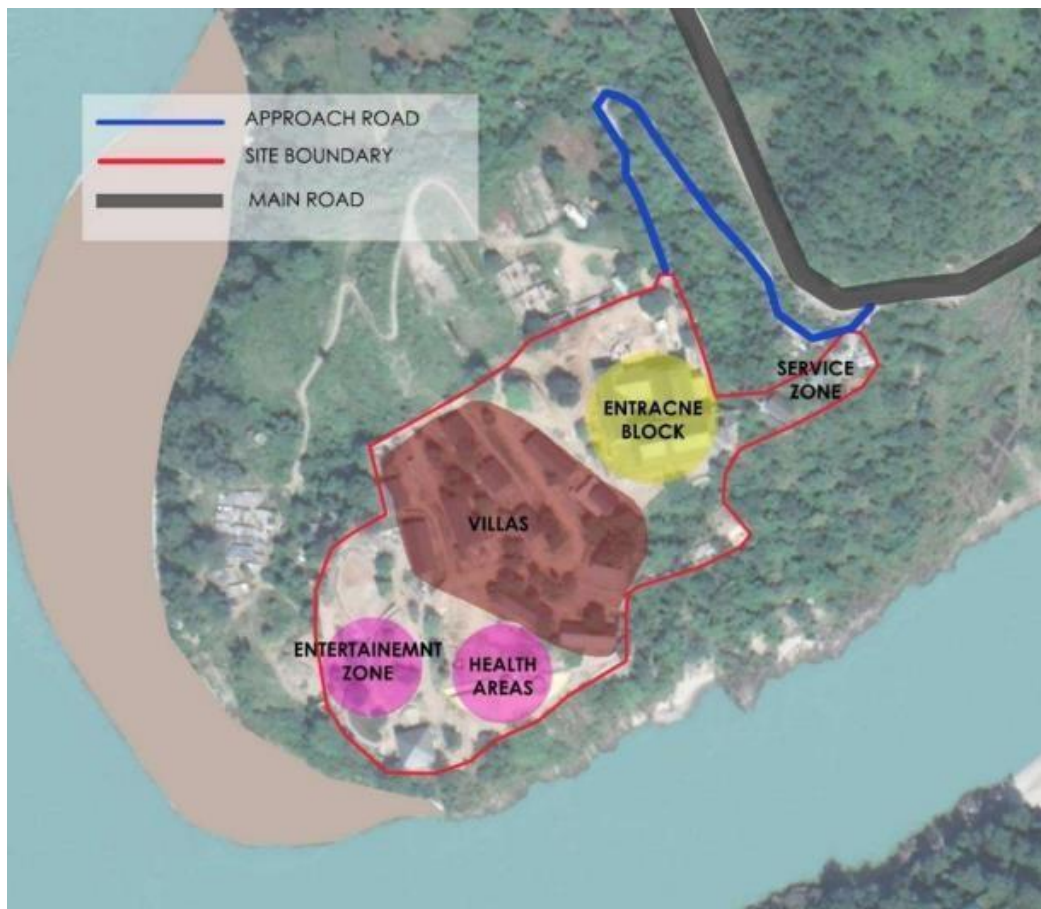


Fig 3.9 site location





Fig 3.10 site plan

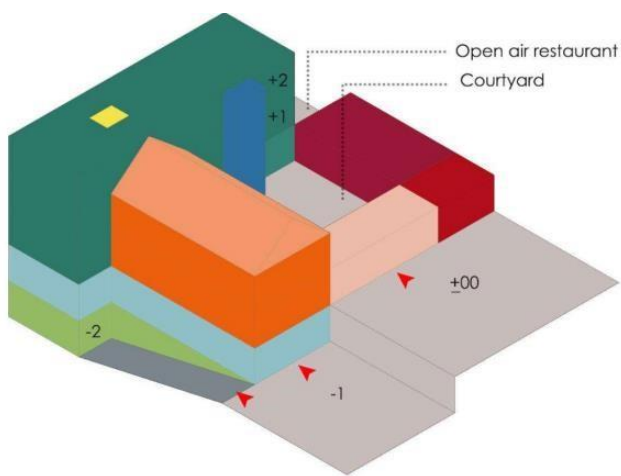
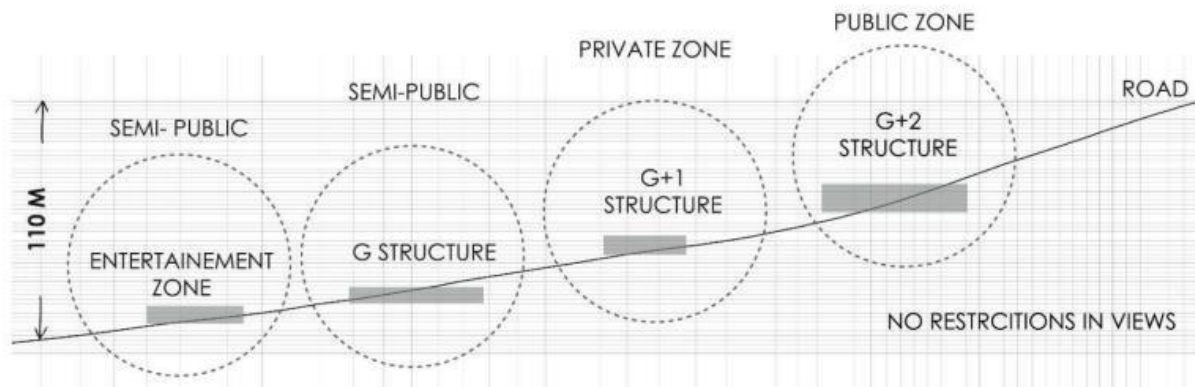


Fig 3.11 details



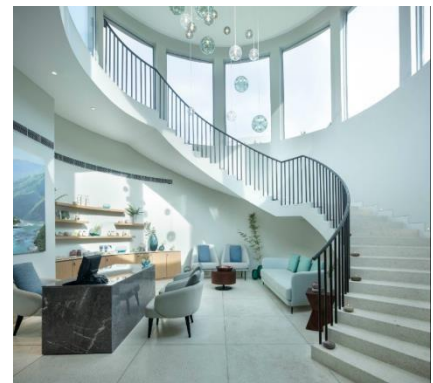


Fig 3.12 site views



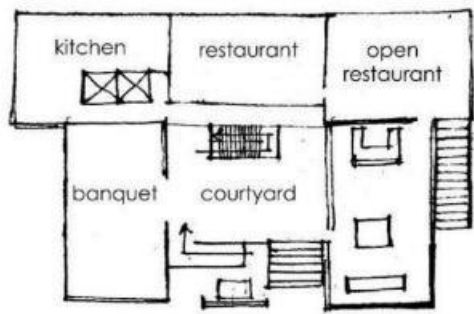


Fig 3.13 Interior views

### 3.2.1 SWOT ANALYSIS

#### Strengths:

1. **Brand Reputation:** Taj is a renowned and respected luxury hotel brand known for its exceptional hospitality and service.
2. **Location:** Taj Rishikesh is situated in the scenic town of Rishikesh, offering guests stunning views of the surrounding landscapes and a serene environment.
3. **Luxury Accommodation:** The hotel provides luxurious and well-appointed rooms and suites with modern amenities, ensuring a comfortable and indulgent stay for guests.
4. **Dining Experience:** Taj Rishikesh offers a range of dining options, including specialty restaurants, providing guests with a variety of culinary experiences.
5. **Wellness and Spa Facilities:** The hotel features a wellness center and spa, allowing guests to indulge in relaxation and rejuvenation therapies.

#### Weaknesses:

1. **Price:** Taj Rishikesh's luxury positioning may make it relatively expensive, limiting its accessibility to budget-conscious travelers.
2. **Competition:** Rishikesh has a growing number of luxury hotels and resorts, intensifying competition in the market.

#### Opportunities:

1. **Growing Tourism:** Rishikesh is witnessing an increase in tourist arrivals, providing an opportunity for Taj Rishikesh to capture a larger market share.
2. **Wellness and Yoga Tourism:** Rishikesh is renowned as a hub for wellness and yoga retreats. Taj Rishikesh can capitalize on this trend by offering specialized wellness and yoga programs.

#### Threats:

1. **External Factors:** The hotel industry is susceptible to external factors such as economic downturns, political instability, or natural disasters, which can impact tourist arrivals.
2. **Online Reputation:** Negative reviews or feedback on online platforms can harm the hotel's reputation and affect future bookings.

It's important to note that this SWOT analysis is a general assessment and may not capture all specific factors and dynamics affecting Taj Rishikesh. Conducting a detailed analysis based on current market conditions and specific business factors would provide more accurate insights.

## CHAPTER 4: DESIGN

### 4.1 CONCEPT

#### BIOMIMICRY

Biomimetic architecture is a multi-disciplinary scientific approach to sustainable design that goes beyond using nature as inspiration for aesthetics but rather deeply studying and applying construction principles that are found in natural environments and species.



Fig 4.1 concept image

- **Nature as Model**
- Biomimicry is a new science that studies nature's models and then emulates these forms, processes, systems, and strategies to solve human problems – sustainably.
- **Nature as Measure**

- Biomimicry uses an ecological standard to judge the sustainability of our innovations.  
After  
3.8 billion years of evolution, nature has learned what works and what lasts.
- **Nature as Mentor**
- Biomimicry is a new way of viewing and valuing nature.

## 4.2 ZONING



Fig 4.2 Zoning





### 4.3 NORMS

MAXIMUM GROUND COVERAGE – 20%

PERMISSIBLE F.A.R - 0.25

### AREA STATEMENT

TOTAL AREA - 187120 SQ.M. (45 Acre)

F.A.R. – 0.25 (46780 SQ.M.)

GROUND COVERAGE – 20% (37424 SQ.M) PARKING

– 1.5 ECS / 100 sq.m.

FRONT SETBACK – 20 M

SIDE SETBACK – 9 M



S. No.	Use group (Plot area in sq.metre)	Plain area		Hill area	
		Maximum ground coverage (%)	Permissible F.A.R *	Maximum ground coverage (%)	Permissible F.A.R
<b>1</b>	<b>Commercial Area/ Office</b>				
	- Upto 100				
	- Upto 200	65	1.50	70	1.30
	- Upto 500	60	1.70	65	1.50
	- Upto 1000	55	1.80	60	1.70
	- Upto 2500	45	2.00	50	1.90
	- Above 2500	40	2.20	40	2.10
<b>2</b>	Storage/cold storage	55	1.80	60	1.50
<b>3</b>	Mall/Multiplex	40	2.50	40	2.20
<b>4</b>	Integrated Office Complex	30	2.00	40	1.50

<b>5</b>	Hotel	Upto 5000*	40	2.00	45	1.80
		Above 5000*	35	2.10	40	1.60
<b>6</b>	Resorts		25	0.75	30	0.90
<b>7</b>	Eco Resorts		20	0.25	20	0.25
<b>8</b>	Motel		25	0.50	30	0.60
<b>9</b>	Amusement Park		15	0.25	20	0.25
<b>10</b>	Hostel/Guest House/ Lodging House		40	1.60	45	1.35

**PARKING – 1.50 ECS**



S.No	Occupancy of Building		Parking Space on per 100 sq.metre covered area or part
1	For multiple residential unit		1.00 ECS
2	Group/residential/Group housing		
	a	On each unit of 50-70 sq.meter floor area	
	b	On each unit of 75-150 sq.metre floor area	
	c	On each unit of above 150 sq.metre floor area	
3	Commercial use		
	-	On plots of upto 50 sq.metres	-
	-	On plots of upto 250 sq.metres	3.00 ECS
	-	On plots of upto 500 sq.metres	1.50 ECS
	-	On plots of above 500 sq.metres	2.50 ECS
4	Wholesale market – Freight Complex		3.50 ECS
5	Mall, Multiplex – Multiplex – Commercial, mixed use/Cinema hall		3.50 ECS
6	Hotel		2.50 ECS
7	Lodging/Tourist home/Musafirkhana/ Dharamshala/ Guest house/Resort/Hostel		1.50 ECS

## CHAPTER 5: BIBLIOGRAPHY

<https://www.tajhotels.com/en-in/taj/taj-bekal-kerala/> <https://shintamani.com/>  
<https://www.census2011.co.in/data/village/396959-kalagarh-orissa.html#:~:text=Kalagarh%20is%20a%20medium%20size,as%20per%20Population%20Census%202011>  
<https://www.anantahotels.com/ananta-hotels-udaipur/gallery.html>  
<https://www.tajhotels.com/en-in/taj/taj-rishikesh/> <https://www.anantahotels.com/ananta-hotels-udaipur/>  
NBC vol 1 & 2  
[Uttarakhand development norms https://pauri.nic.in/](https://pauri.nic.in/)  
<https://www.euttaranchal.com/tourism/pauri-garhwal.php>  
<https://www.euttaranchal.com/tourism/kalagarh-dam.php>  
<https://kalagarhtigerreserve.in/>



# ECO RESORT AT KALAGARH, PAURI GARWAL, UTTARAKHAND

## BIOMIMICRY

Biomimetic architecture is a multi-disciplinary scientific approach to sustainable design that goes beyond using nature as inspiration for aesthetics but rather deeply studying and applying construction principles that are found in natural environments and species.

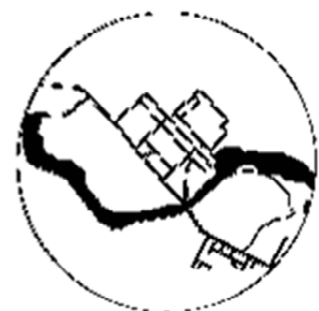
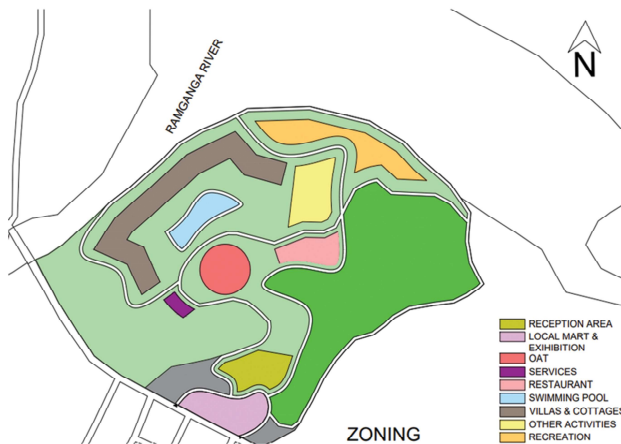


Biomimicry is a design approach that takes inspiration from nature's solutions to create sustainable and efficient human-made structures. Applying the principles of biomimicry to an eco resort can result in a harmonious blend of natural elements, sustainable practices, and innovative design. Here's a concept for an eco resort inspired by biomimicry:

1. Form and Structure.
2. Passive Climate Control.
3. Biomimetic Energy Generation.
4. Water Management.
5. Natural Integration.
6. Efficient Material Usage.
7. Educational Opportunities.



By incorporating biomimicry into the design and operations of an eco resort, it becomes possible to create a sustainable and immersive experience that showcases the beauty and efficiency of natural systems. This concept combines innovation, sustainability, and education to provide guests with a unique and inspiring stay in harmony with nature.



## CONCEPT

THESIS

GUIDED BY-  
Ar. K. G. YADAV

SUBMITTED BY-  
SYED MOZAHIR ABBAS  
B.ARCH. 5TH YEAR



5





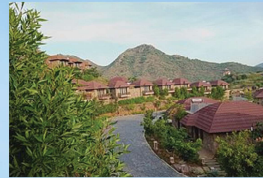
# ECO RESORT AT KALAGARH, PAURI GARWAL, UTTARAKHAND



## THE ANANTA RESORT , UDAIPUR , RAJASTHAN

### ABOUT –

LOCATION: VILLAGE BUJHDA, TEHSIL GIRWA,  
KODIYAT ROAD, UDAIPUR, RAJASTHAN.  
DISTANCE FROM MAHARANA PRATAB AIRPORT: 35.5 KM  
DISTANCE FROM UDAIPUR RAILWAY STATION: 10.1 KM  
DISTANCE FROM UDAIPUR CITY: 7KM (APPROX)



SPREAD ACROSS 90 ACRES OF LUSH GREENERY THE  
RESORT ENCOMPASSES 182 CONTEMPORARY VILLAS  
ITS PREMIUM GATEWAY RESORT SURROUNDED BY THE  
ARAVALLIS ANANTA UDAIPUR HAS INTERNATIONAL  
STANDARD SPA NATUROPATHY, SWEDISH SPA THERAPLES,  
ORIENTAL SPA, YOGA, MEDITATION ETC.  
TWO ECLECTIC DINING OUTLETS  
SPECIAL KIDS' ACTIVITY AREA  
OUTDOOR SWIMMING POOL  
SPA AND FITNESS CENTER  
LARGEST DIVISIBLE BANQUET HALLS IN RAJASTHAN

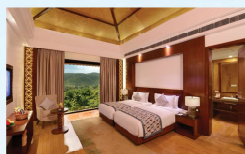
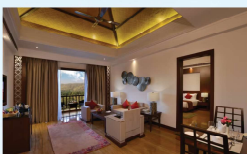


PRIVATE ZONE  
PUBLIC ZONE  
RECREATIONAL ZONE

TOTAL AREA - 96.8 SQ.M  
1 BEDROOM - 27.3 SQ.M  
LOUNGE - 27.3 SQ.M  
TOILET - 7.7 SQ.M

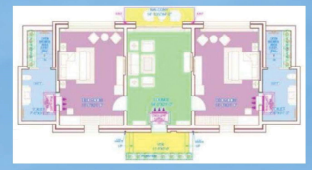


1 BHK ROOM



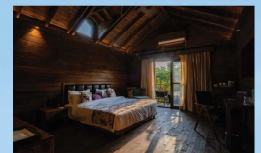
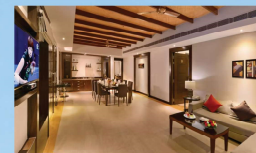
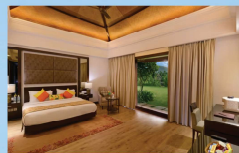
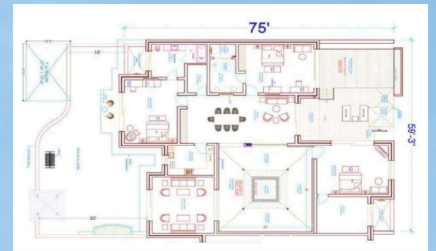
### 2 BHK VILLA

TOTAL AREA - 142.6 SQ.M  
1 BEDROOM - 27.3 SQ.M  
2 BEDROOM - 27.3 SQ.M  
LOUNGE - 27.3  
TOILET - 7.7 SQ.M



### PRESIDENTIAL SUITE

TOTAL AREA - 411.09 SQ.M  
3 BEDROOM + TOILET  
DRAWING & DINNING  
KITCHEN COURTYARD  
SWIMMING POOL  
PRIVATE LAWN



OPEN DINNING



CLOSED DINNING



BANQUET HALL



CONFERENCE HALL



SWIMMING POOL



POOL DECK



BILLARDS ROOM



INDOOR GAMES



GOLF



OAT



PLAY AREA



CHILDREN ROOM



SPA



THEATRE



PARLOUR



MASSAGE ROOM

## SWOT ANALYSIS

### STRENGTH

ANANTA RESORT UDAIPUR IS SITUATED IN A PRIME  
LOCATION WITH A SERENE AMBIANCE THAT OFFERS  
GUESTS A PEACEFUL AND COMFORTABLE STAY.  
THE RESORT OFFERS A RANGE OF AMENITIES, SUCH  
AS A SWIMMING POOL, SPA, FITNESS CENTER, AND A  
RESTAURANT, THAT CATER TO THE NEEDS OF ITS GUESTS.  
THE RESORT HAS MODERN INFRASTRUCTURE AND FACILITIES  
THAT PROVIDE A LUXURIOUS EXPERIENCE TO ITS GUESTS.

### OPPORTUNITY

THE RESORT CAN DIVERSIFY ITS SERVICES BY OFFERING  
MORE OUTDOOR ACTIVITIES SUCH AS TREKKING,  
BIRD WATCHING, AND CYCLING.  
ANANTA RESORT UDAIPUR CAN EXPAND ITS CUSTOMER  
BASE BY INTRODUCING SPECIAL PACKAGES FOR BUSINESS  
TRAVELERS, FAMILIES, AND COUPLES.

### WEAKNESS

THE RESORT IS LOCATED AWAY FROM THE CITY  
CENTER, WHICH CAN BE A DISADVANTAGE FOR  
GUESTS WHO WANT TO EXPLORE THE CITY OR  
ATTEND BUSINESS MEETINGS.  
THE RESORT IS RELATIVELY EXPENSIVE  
COMPARED TO OTHER HOTELS IN THE AREA,  
WHICH MAY LIMIT ITS CUSTOMER BASE.

### THREAD

THE HOSPITALITY INDUSTRY IN UDAIPUR IS  
HIGHLY COMPETITIVE, AND NEW HOTELS AND  
RESORTS ARE OPENING FREQUENTLY, WHICH  
CAN IMPACT ANANTA RESORT'S MARKET SHARE.  
ECONOMIC DOWNTURNS OR FLUCTUATIONS CAN  
AFFECT THE HOSPITALITY INDUSTRY AND IMPACT  
THE RESORT'S REVENUE.





# ECO RESORT AT KALAGARH, PAURI GARWAL, UTTARAKHAND



**TAJ RISHIKESH ,  
UTTARAKHAND**

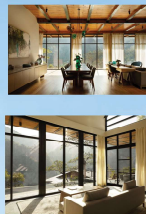
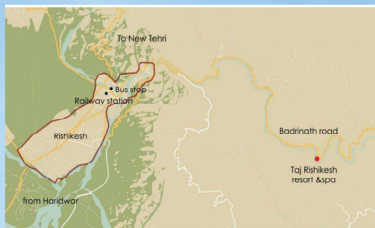
## OBJECTIVE OF CASE STUDY

TO UNDERSTAND THE PLANNING AND LAYOUT  
OF A RESORT ON CONTOURS.  
TO UNDERSTAND THE USE OF LOCAL MATERIAL  
AND ARCHITECTURE STYLE.  
TO UNDERSTAND THE FUNCTIONING OF  
5-STAR SPA RESORT. TO UNDERSTAND THE  
SERVICES ON CONTOUR SITE.



## ABOUT –

**LOCATION:** SINGTHALI, RISHIKESH, UTTARAKHAND  
**DISTANCE FROM RISHIKESH :** 30 KM  
**DISTANCE FROM DEHRADUN AIRPORT :** 70 KM  
**DISTANCE FROM RISHIKESH RAILWAY STATION:** 35 KM



## CONSTRUCTION DETAILS AND MATERIALS



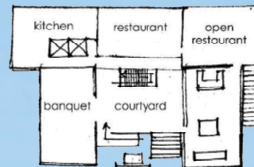
**DRY STONE  
WALL**



**SLATE AND  
SLOPED ROOF  
AND STONE MASONRY**



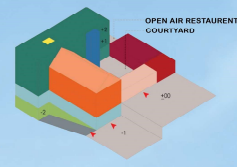
**TREES WERE CONSERVED**



**PLAN**



**ELEVATION**



**ZONING**

**A GATEWAY LOCATION TO THE CHAR DHAM PILGRIMAGE  
SITES OF KEDARNATH, BADRINATH AND ALSO HEMKUNT  
SAHIB.**

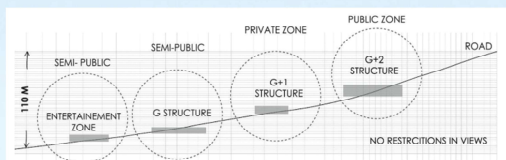
**80 ROOMS HAVE PANORAMIC VIEWS OF THE GANGES  
WITH ITS WHITE SANDY BEACH .  
DELUXE ROOM KING BED, DELUXE ROOMS TWIN BED,  
PREMIUM VILLA KING BED, PREMIUM VILLA TWIN BED,  
JUNIOR SUITE KING BED, GANGOTRI VILLA KING BED  
PANORAMA BAR  
PEBBLE BEACH - OPEN-AIR PIZZA BAR  
SPORTS LAWN (MAX CAPACITY: 150) 1560 SQ. FT.  
BANQUET HALL WITH A 600 SQ. FT. PRE FUNCTION AREA**



**SITE ZONING**

## SITE TOPOGRAPHY

**NO VISIBILITY FROM ROAD ONLY ROOF IS VISIBLE AS YOU ENTER  
THE PREMISES FROM THE APPROACH ROAD**



## SWOT ANALYSIS

### STRENGTH

TAJ RISHIKESH IS LOCATED IN A PICTURESQUE LOCATION  
OVERLOOKING THE GANGES RIVER IN THE FOOTHILLS OF  
THE HIMALAYAS, PROVIDING GUESTS WITH A SERENE AND  
PEACEFUL ATMOSPHERE.  
TAJ RISHIKESH HAS IMPLEMENTED SUSTAINABLE PRACTICES,  
SUCH AS USING SOLAR POWER AND RAINWATER HARVESTING,  
WHICH CAN APPEAL TO ECO-CONSCIOUS GUESTS.

### WEAKNESS

THE RESORT IS LOCATED FAR AWAY FROM  
MAJOR CITIES AND CAN BE DIFFICULT TO  
REACH FOR GUESTS WHO ARE NOT FAMILIAR  
WITH THE AREA.  
THE RESORT IS RELATIVELY EXPENSIVE  
COMPARED TO OTHER HOTELS IN THE AREA,  
WHICH MAY LIMIT ITS CUSTOMER BASE.

### OPPORTUNITY

TAJ RISHIKESH CAN EXPAND ITS CUSTOMER BASE BY  
INTRODUCING SPECIAL PACKAGES FOR FAMILIES,  
COUPLES, AND CORPORATE GROUPS.  
THE RESORT CAN DIVERSIFY ITS SERVICES BY OFFERING  
MORE OUTDOOR ACTIVITIES, SUCH AS HIKING, RAFTING,  
AND CAMPING, TO ATTRACT MORE ADVENTURE  
ENTHUSIASTS.

### THREAD

THE HOSPITALITY INDUSTRY IN RISHIKESH IS  
HIGHLY COMPETITIVE, AND NEW HOTELS AND  
RESORTS ARE OPENING FREQUENTLY,  
WHICH CAN IMPACT TAJ RISHIKESH'S MARKET  
SHARE.  
THE RESORT'S LOCATION IN THE FOOTHILLS OF  
THE HIMALAYAS CAN BE PRONE TO NATURAL  
DISASTERS.



# LEGEND -

1. PARKING
2. SHOPS & HAAT
3. STAFF PARKING
4. ADMINISTRATION BLOCK
5. GOLF CAR PARKING
6. KID'S PLAYGROUND
7. RESTAURANT
8. 1 BHK DELUXE
9. VOLLEYBALL GROUND
10. BADMINTON GROUND
11. RECREATIONAL BLOCK
12. GYM
13. SPA & WELLNESS
14. POOL
15. VILLA A
16. VILLA B
17. FAMILY SUITE
18. ZIPLINE
19. STAFF ACCOMMODATION & SERVICES
20. OPEN AIR THEATRE
21. RIVER RAFTING STARTING POINT
22. RIVER RAFTING END POINT
23. CYCLE TRACK
24. CYCLE STAND
25. CONVENIENCE ROOM
26. BARBEQUE
27. PLAY GROUND
28. GARDEN
29. GUARD ROOM
30. TRANSFORMER
31. STP

RAMGANGA RIVER

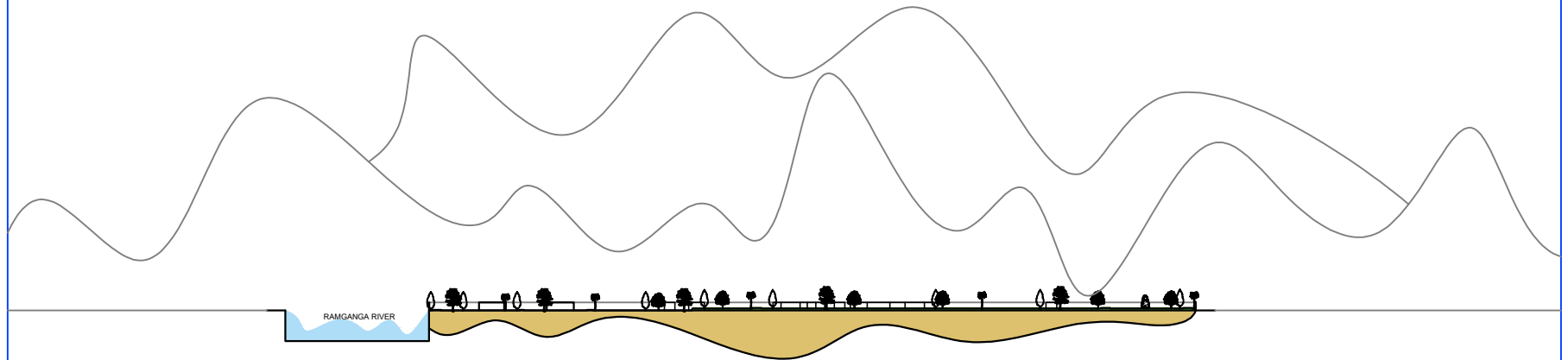
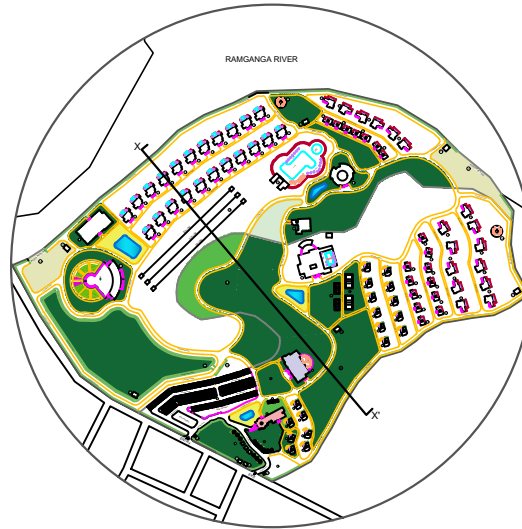


SITE AREA	- 187120 SQ.M (45 ACRE)
GIVEN FAR	- 0.25 - 46780 SQ.M
GIVEN GROUND COVERAGE - 20%	- 37424 SQ.M
ACHIEVED FAR	- 0.14 - 26428 SQ.M
ACHIEVED GC	- 12% - 21918 SQ.M



SCHOOL	DRAWN BY:	TOPIC:	SHEET CONTENT:	GUIDE:	SHEET NO.:
BBDU	SYED MOZAHIR	ABBAS RESORT AT KALAGARH, PAURI GARHWAL	SITE PLAN	AR.K.GHANSHYAM YADAV	06

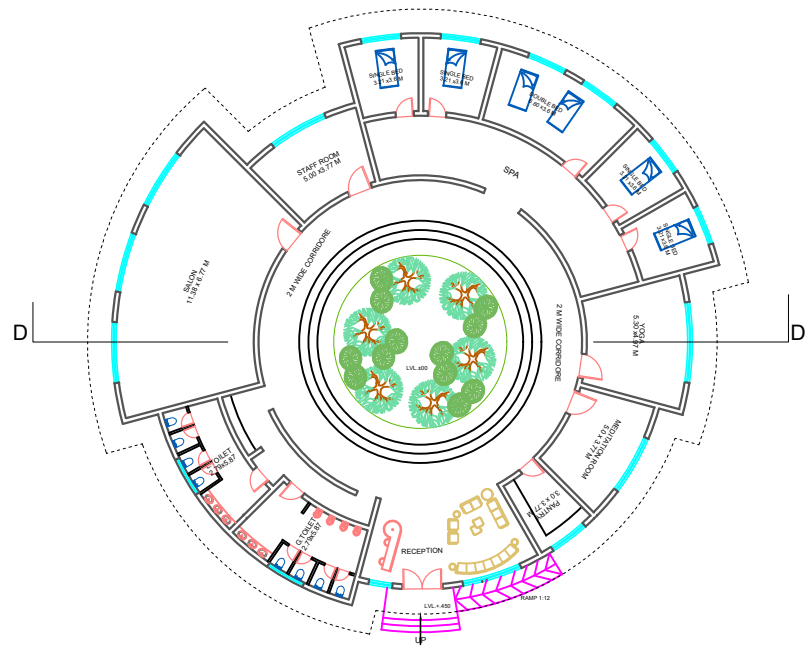




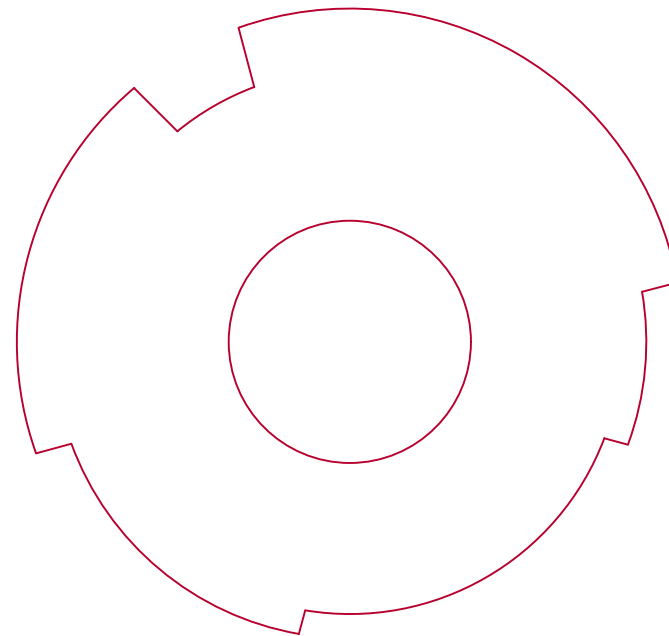
SITE SECTION -XX'

SCHOOL	DRAWN BY:	TOPIC:	SHEET CONTENT:	GUIDE:	SHEET NO.:
BBDU	SYED MOZAHIR ABBAS	ECO RESORT AT KALAGARH, PAURI GARHWAL	SITE SECTION	AR.K.GHANSHYAM YADAV	07

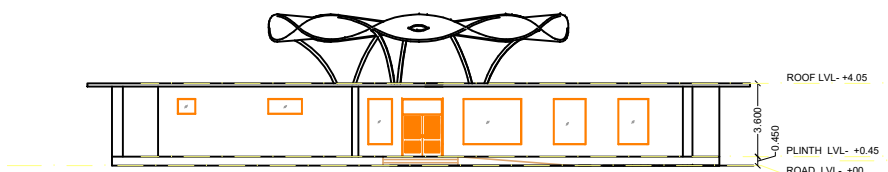




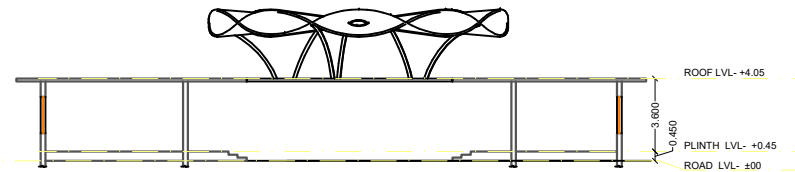
GROUND FLOOR PLAN



ROOF PLAN



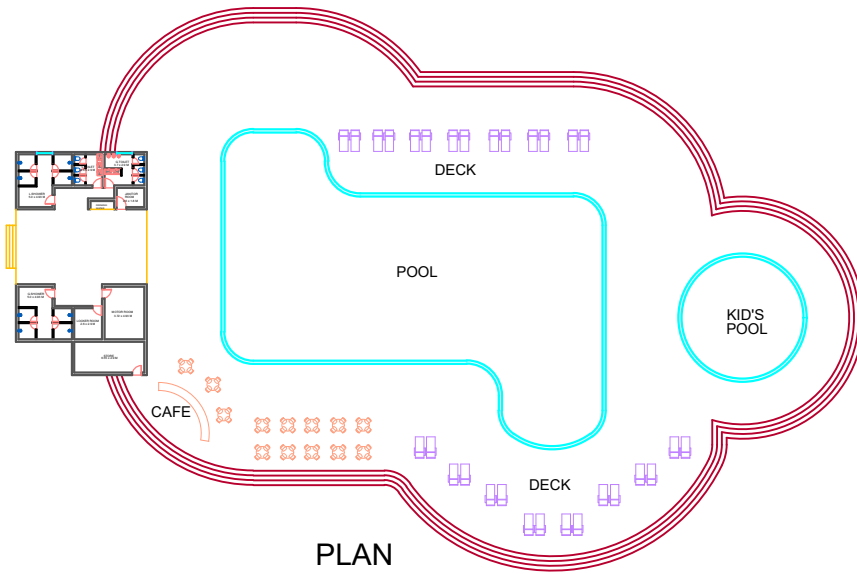
SECTION - DD'



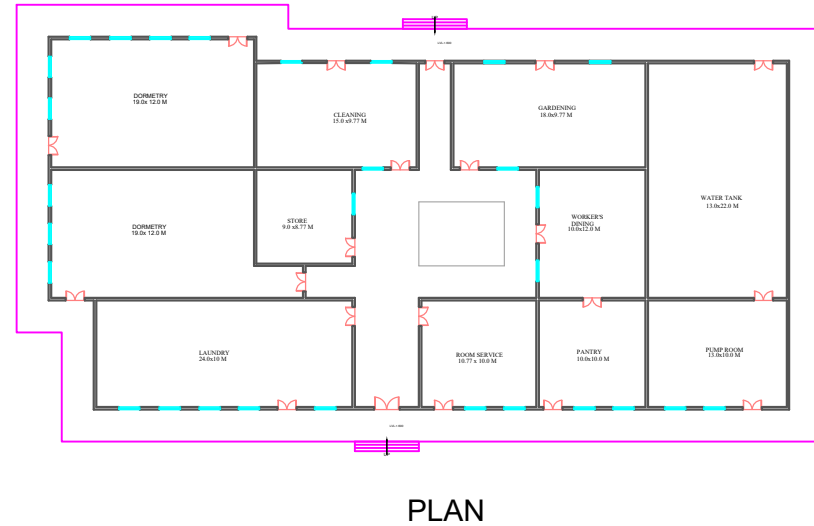
FRONT ELEVATION

SCHOOL	DRAWN BY:	TOPIC:	SHEET CONTENT:	GUIDE:	SHEET NO.:
BBDU	SYED MOZAHIR ABBAS	ECO RESORT AT KALAGARH , PAURI GARHWAL ,	SPA & WELLNESS	AR. K.GHANSHYAM YADAV	11

## SWIMMING POOL



## SERVICES



## BARBEQUE



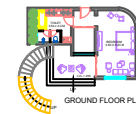
## TOILET BLOCK



## VILLA A

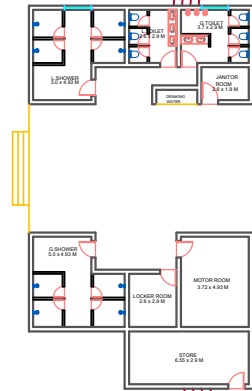


## 1 BHK DELUXE



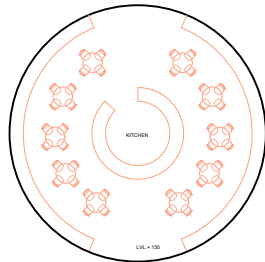
SCHOOL	DRAWN BY:	TOPIC:	SHEET CONTENT:	GUIDE:	SHEET NO.:
BBDU	SYED MOZAHIR ABBAS	ECO RESORT AT KALAGARH , PAURI GARHWAL ,	PLANS	AR. K.GHANSHYAM YADAV	16

SWIMMING  
POOL



CAFE

BBQ



PLAN

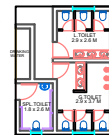
POOL

DECK

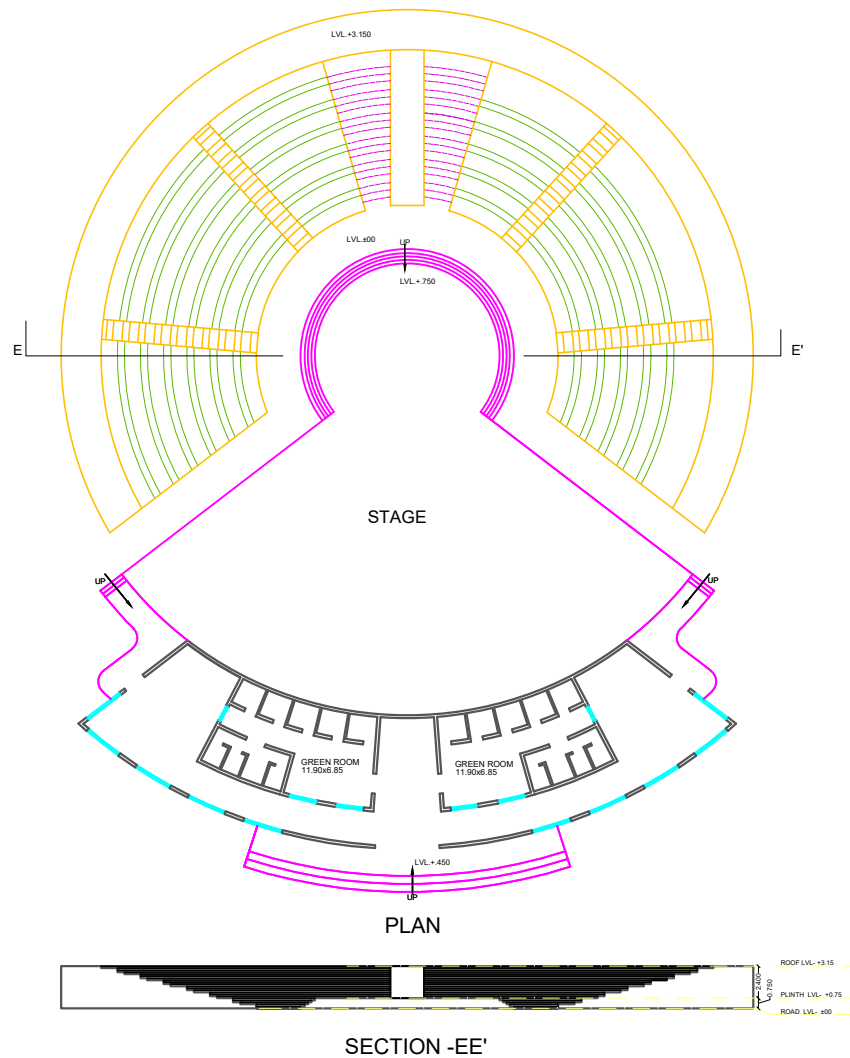
DECK

KID'S  
POOL

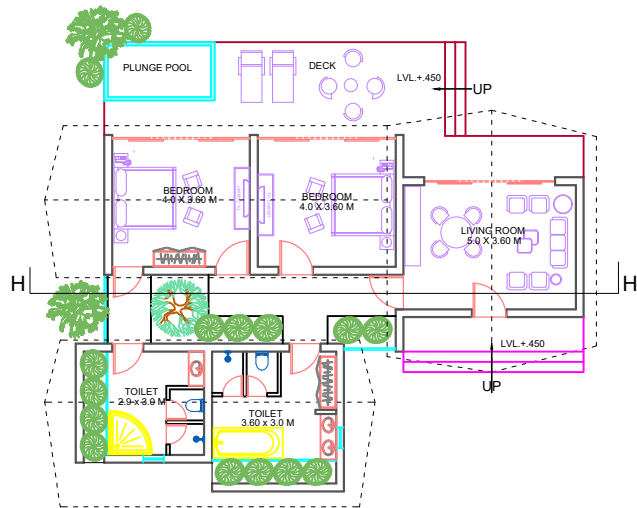
TOILET  
BLOCK



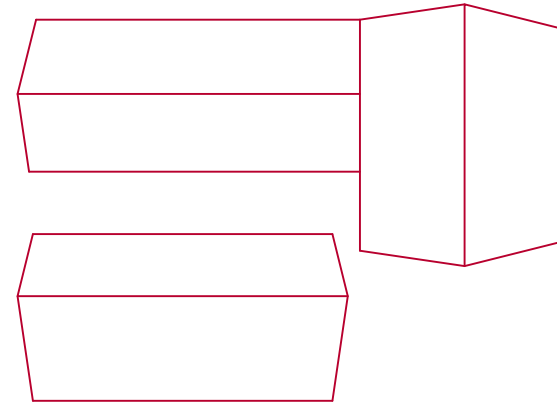
SCHOOL	DRAWN BY:	TOPIC:	SHEET CONTENT:	GUIDE:	SHEET NO.:
BBDU	SYED MOZAHIR ABBAS	ECO RESORT AT KALAGARH , PAURI GARHWAL ,	PLANS	AR. K.GHANSHYAM YADAV	



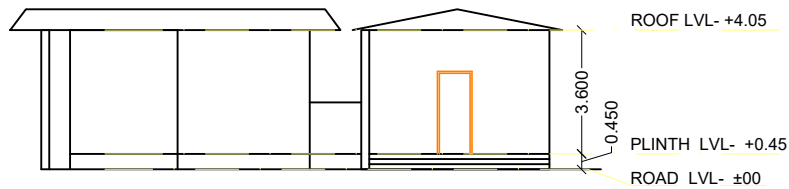
SCHOOL	DRAWN BY:	TOPIC:	SHEET CONTENT:	GUIDE:	SHEET NO.:
BBDU	SYED MOZAHIR ABBAS	ECO RESORT AT KALAGARH , PAURI GARHWAL ,	OPEN AIR THEATRE	AR. K.GHANSHYAM YADAV	12



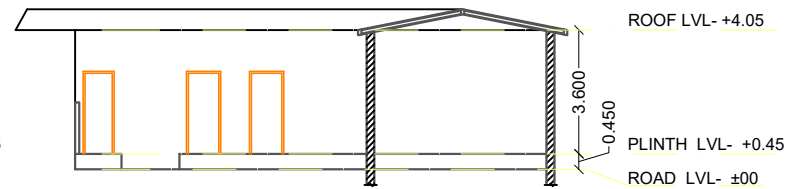
GROUND FLOOR PLAN



ROOF PLAN

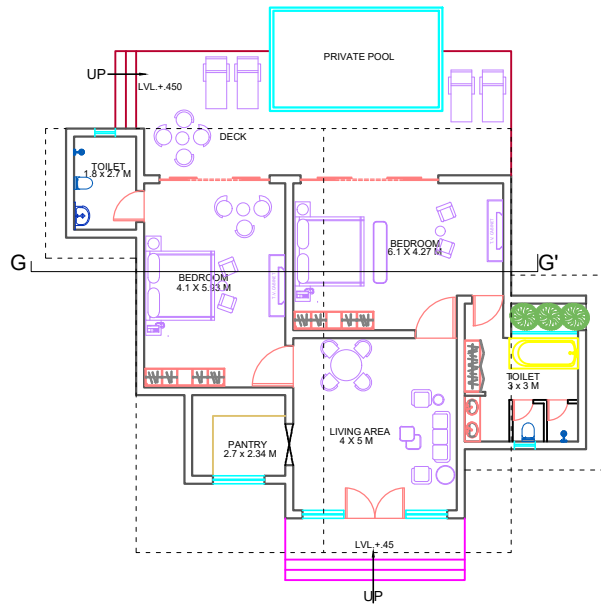


FRONT ELEVATION

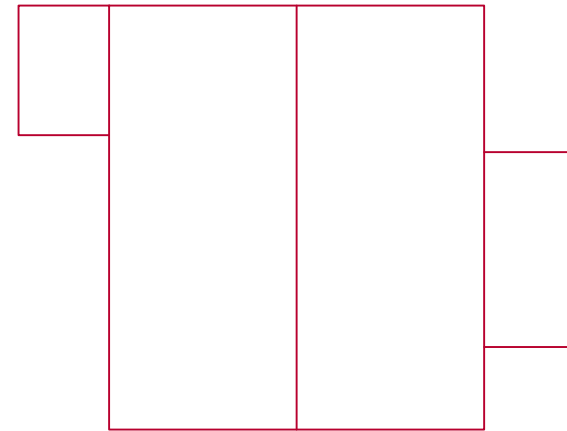


SECTION - HH'

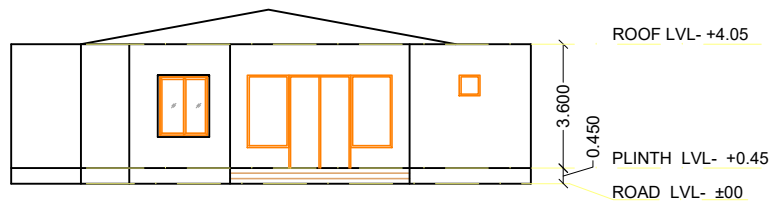
SCHOOL	DRAWN BY:	TOPIC:	SHEET CONTENT:	GUIDE:	SHEET NO.:
BBDU	SYED MOZAHIR ABBAS	ECO RESORT AT KALAGARH , PAURI GARHWAL ,	VILLA B	AR. K.GHANSHYAM YADAV	15



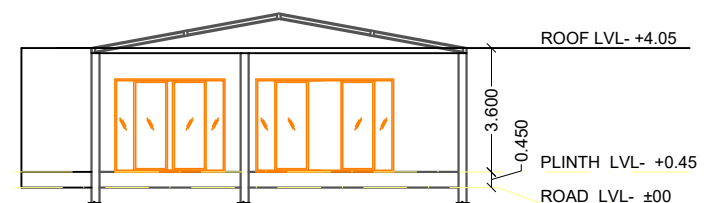
GROUND FLOOR PLAN



ROOF PLAN

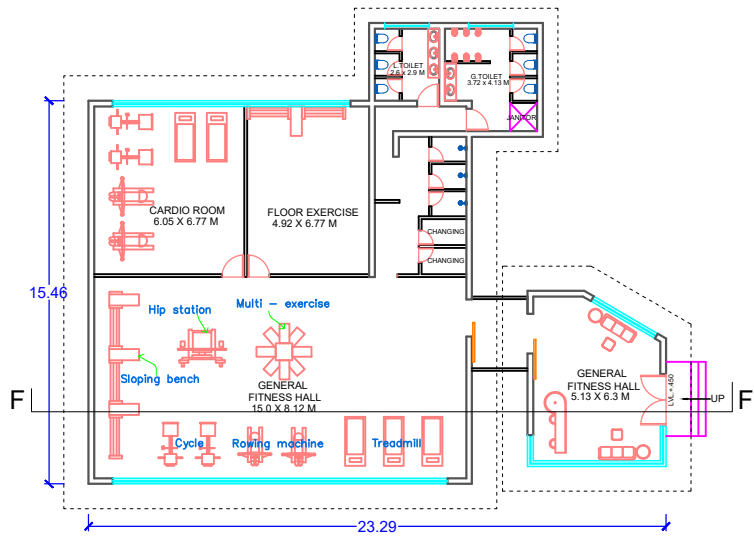


FRONT ELEVATION

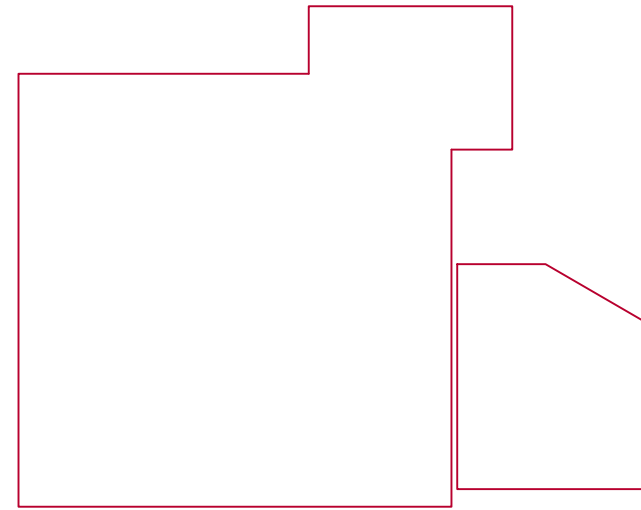


SECTION - FF'

SCHOOL	DRAWN BY:	TOPIC:	SHEET CONTENT:	GUIDE:	SHEET NO.:
BBDU	SYED MOZAHIR ABBAS	ECO RESORT AT KALAGARH , PAURI GARHWAL ,	FAMILY SUITE	AR. K.GHANSHYAM YADAV	14



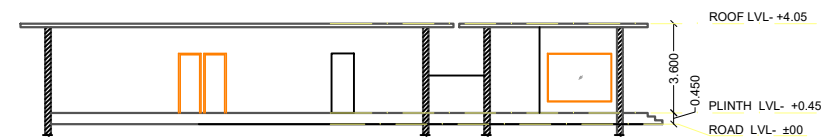
GROUND FLOOR PLAN



ROOF PLAN



ELEVATION

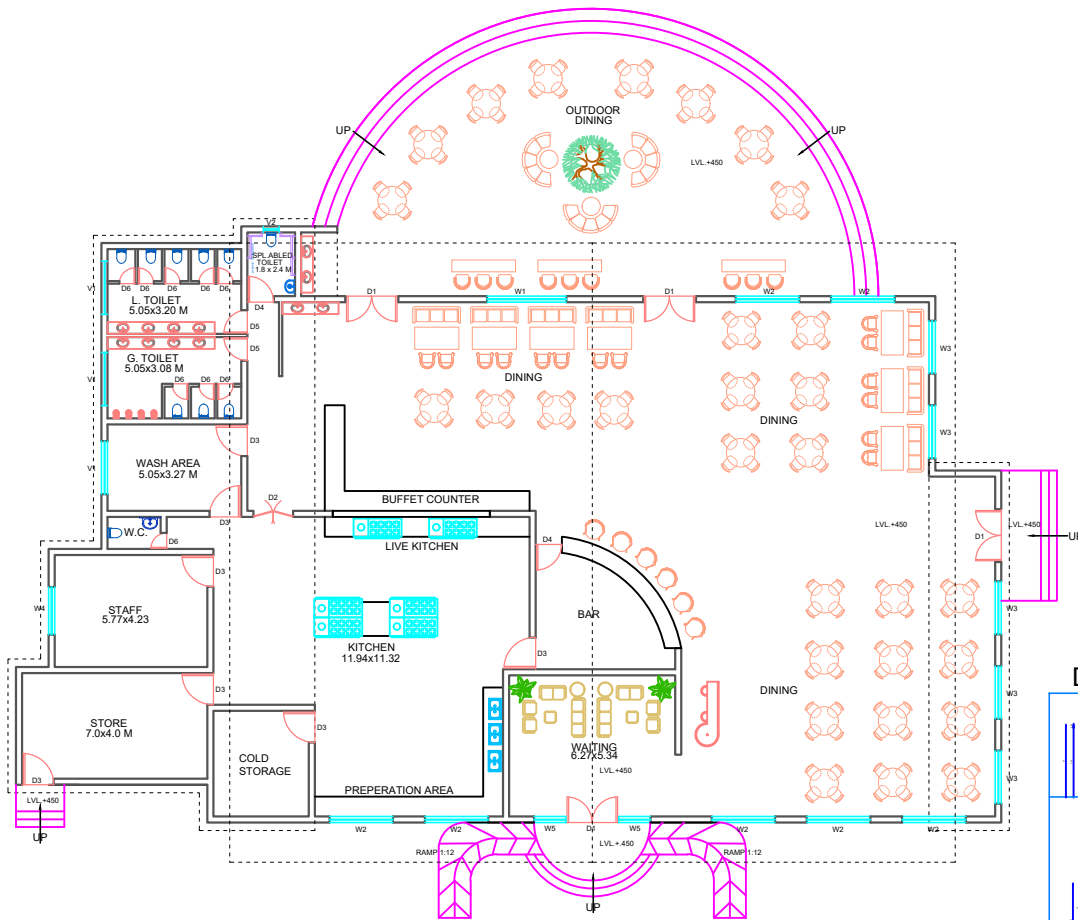


SECTION - FF'

SCHOOL	DRAWN BY:	TOPIC:	SHEET CONTENT:	GUIDE:	SHEET NO.:
BBDU	SYED MOZAHIR ABBAS	ECO RESORT AT KALAGARH , PAURI GARHWAL ,	GYM	AR. K.GHANSHYAM YADAV	13





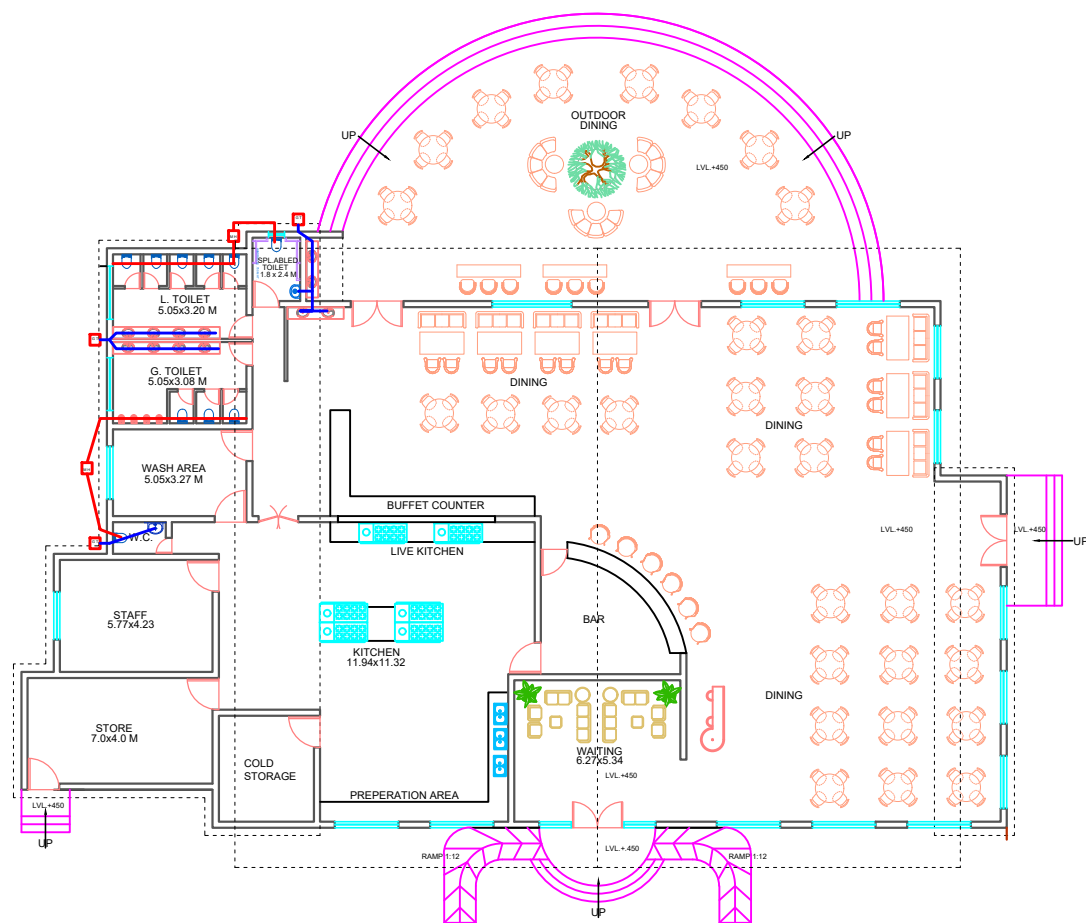


GROUND FLOOR PLAN

### DOOR-WINDOW SCHEDULE

DOOR NAME = D1 SILL = 1.50 LINTEL = 2.7 M D1 COUNT : 04	DOOR NAME = D2 SILL = 1.50 LINTEL = 2.7 M D2 COUNT : 01	DOOR NAME = D3 SILL = 1.50 LINTEL = 2.7 M D3 COUNT : 07	DOOR NAME = D4 SILL = 1.50 LINTEL = 2.7 M D4 COUNT : 02	DOOR NAME = D5 SILL = 1.50 LINTEL = 2.7 M D5 COUNT : 02	DOOR NAME = D6 SILL = 1.50 LINTEL = 2.7 M D6 COUNT : 09
WINDOW NAME = W1 SILL = 0.9 LINTEL = 2.7 M W1 COUNT : 01	WINDOW NAME = W2 SILL = 0.9 LINTEL = 2.7 M W2 COUNT : 07	WINDOW NAME = W3 SILL = 0.9 LINTEL = 2.7 M W3 COUNT : 05	WINDOW NAME = W4 SILL = 0.9 LINTEL = 2.7 M W4 COUNT : 01	WINDOW NAME = W5 SILL = 0.9 M LINTEL = 2.7 M W5 COUNT : 02	VENTILATOR = V1 SILL = 2.1 M LINTEL = 2.7 M V1 COUNT : 03
				VENTILATOR = V2 SILL = 2.1 M LINTEL = 2.7 M V2 COUNT : 01	VENTILATOR = V3 SILL = 2.1 M LINTEL = 2.7 M V3 COUNT : 01

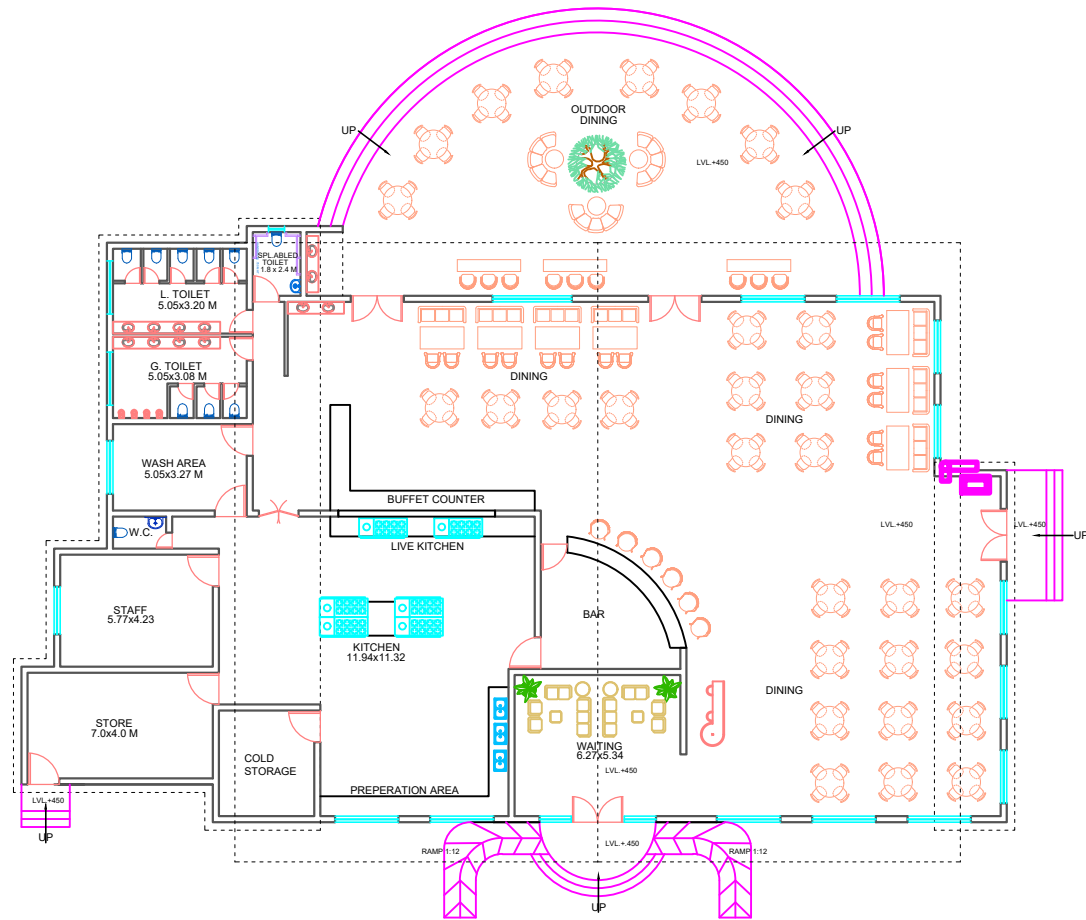
SCHOOL	DRAWN BY:	TOPIC:	SHEET CONTENT:	SYED MOZAHIR ABBAS	SHEET NO.:
BBDU	SYED MOZAHIR ABBAS	ECO RESORT AT KALAGARH , PAURI GARHWAL ,	DOOR -WINDOW SCHEDULE	AR. K.GHANSHYAM YADAV	24



LEGEND	
SYM.	NAME
MH	MANHOLE
GT	GULLY TRAP
—	PIPE LINES

GROUND FLOOR PLAN

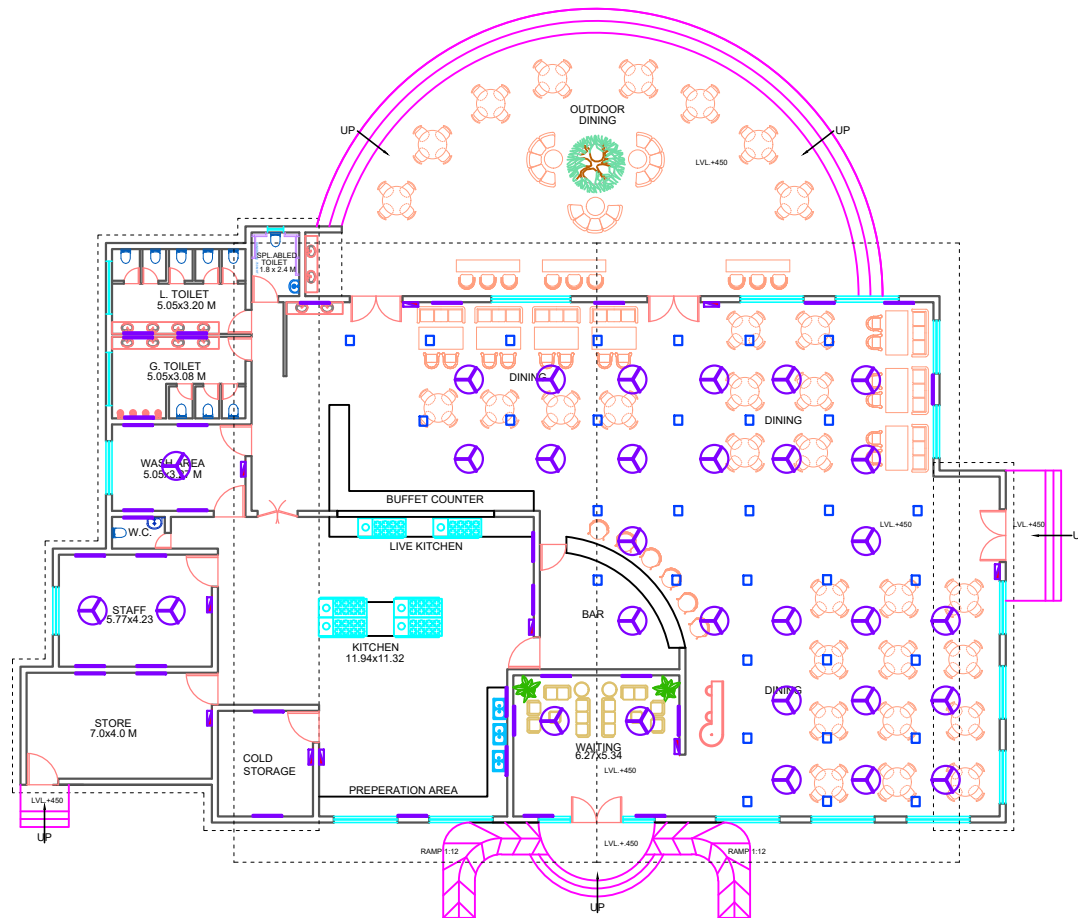
SCHOOL	DRAWN BY:	TOPIC:	SHEET CONTENT:	GUIDE:	SHEET NO.:
BBDU	SYED MOZAHIR ABBAS	ECO RESORT AT KALAGARH , PAURI GARHWAL ,	SERVICES PLUMBING DRAWING	AR. K.GHANSHYAM YADAV	19



LEGEND	
SYM.	NAME
	FIRE HYDRANT
	HOSE REEL BOX

## GROUND FLOOR PLAN

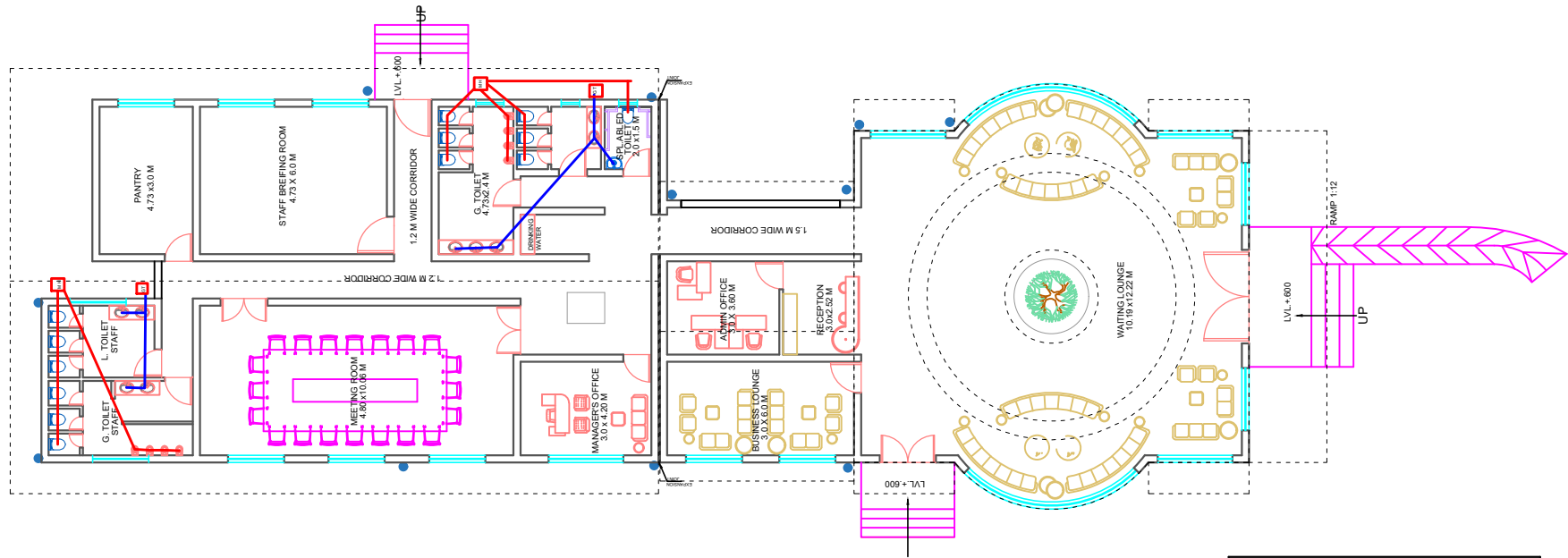
SCHOOL	DRAWN BY:	TOPIC:	SHEET CONTENT:	GUIDE:	SHEET NO.:
BBDU	SYED MOZAHIR ABBAS	ECO RESORT AT KALAGARH , PAURI GARHWAL ,	SERVICES FIRE FIGHTING	AR. K.GHANSHYAM YADAV	18



LEGEND	
SYM.	NAME
	FAN
	SWITCH BOARD
	TUBE LIGHT

GROUND FLOOR PLAN

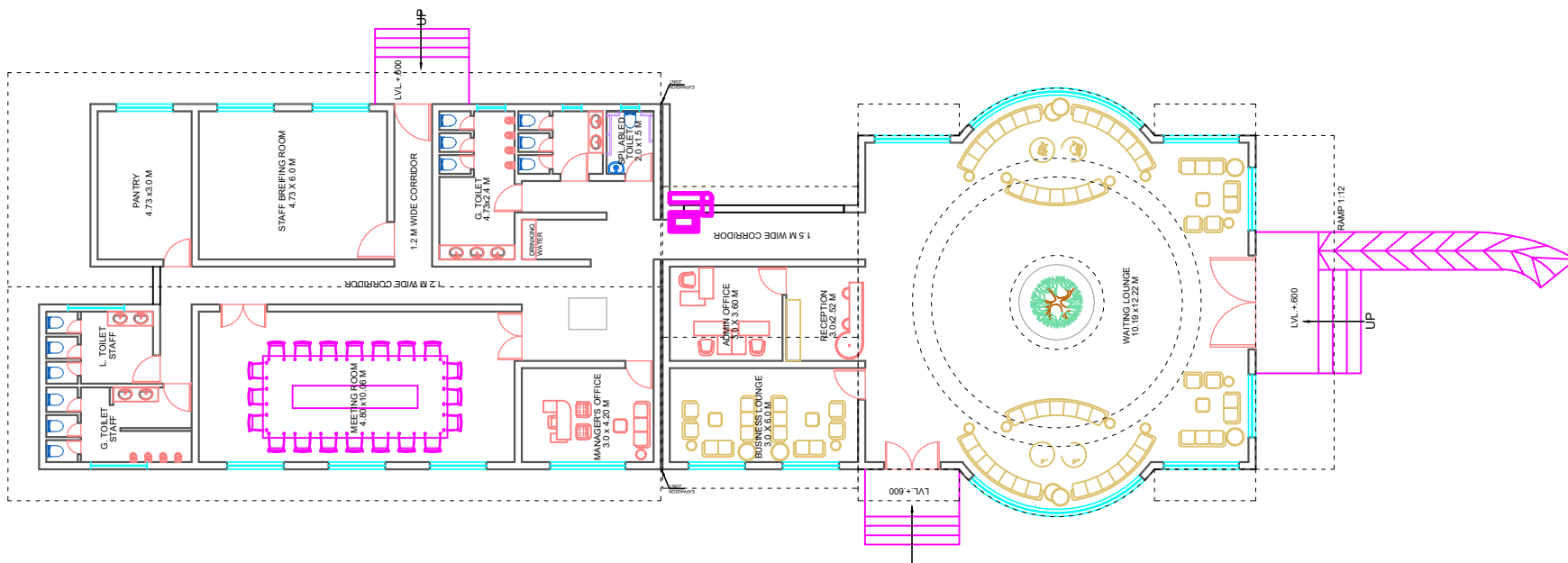
SCHOOL	DRAWN BY:	TOPIC:	SHEET CONTENT:	GUIDE:	SHEET NO.:
BBDU	SYED MOZAHIR ABBAS	ECO RESORT AT KALAGARH , PAURI GARHWAL ,	SERVICES ELECTRICAL DRAWING	AR. K.GHANSHYAM YADAV	17



GROUND FLOOR PLAN

LEGEND	
SYM.	NAME
<span style="border: 1px solid red; padding: 2px;">MH</span>	MANHOLE
<span style="border: 1px solid red; padding: 2px;">GT</span>	GULLY TRAP
<span style="color: red;">—</span> <span style="color: blue;">—</span>	PIPE LINES

SCHOOL	DRAWN BY:	TOPIC:	SHEET CONTENT:	GUIDE:	SHEET NO.:
BBDU	SYED MOZAHIR ABBAS	ECO RESORT AT KALAGARH , PAURI GARHWAL ,	SERVICES PLUMBING DRAWING	AR. K.GHANSHYAM YADAV	22

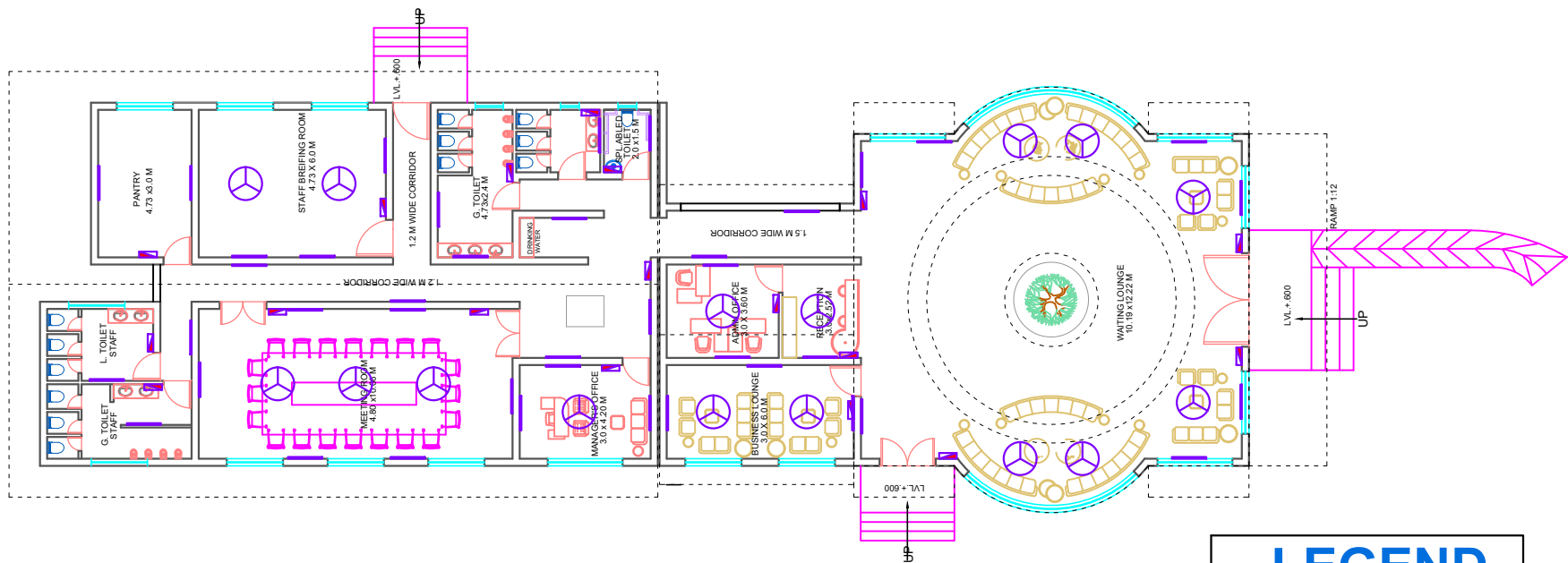


GROUND FLOOR PLAN

LEGEND	
SYM.	NAME
	FIRE HYDRANT
	HOSE REEL BOX

SCHOOL	DRAWN BY:	TOPIC:	SHEET CONTENT:	GUIDE:	SHEET NO.:
BBDU	SYED MOZAHIR ABBAS	ECO RESORT AT KALAGARH , PAURI GARHWAL ,	SERVICES FIRE FIGHTING	AR. K.GHANSHYAM YADAV	21





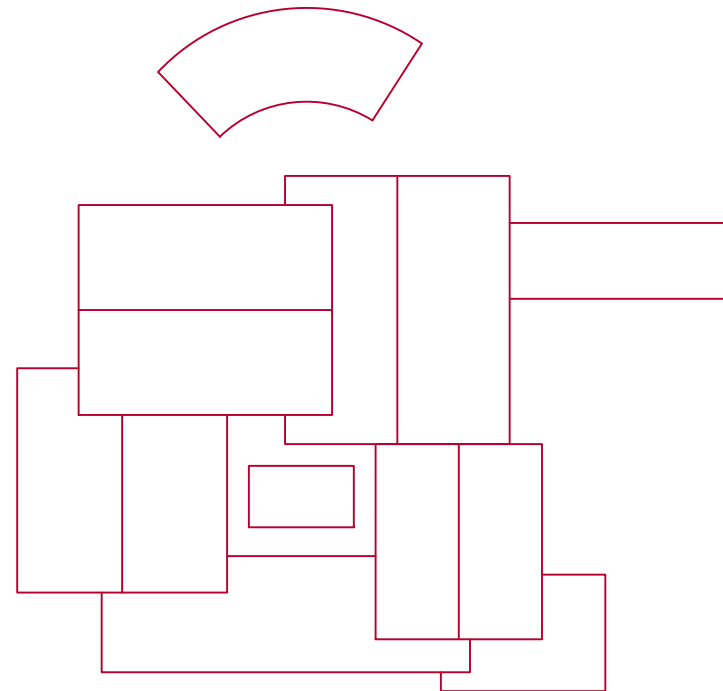
GROUND FLOOR PLAN

LEGEND	
SYM.	NAME
	FAN
	SWITCH BOARD
	TUBE LIGHT

SCHOOL	DRAWN BY:	TOPIC:	SHEET CONTENT:	GUIDE:	SHEET NO.:
BBDU	SYED MOZAHIR ABBAS	ECO RESORT AT KALAGARH , PAURI GARHWAL ,	SERVICES ELECTRICAL DRAWING	AR. K.GHANSHYAM YADAV	20



GROUND FLOOR PLAN



ROOF PLAN

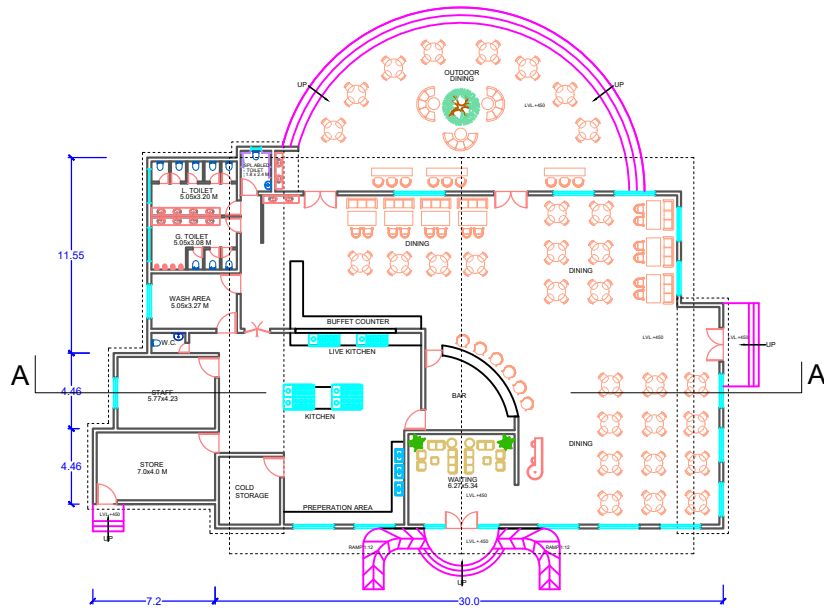


FRONT ELEVATION

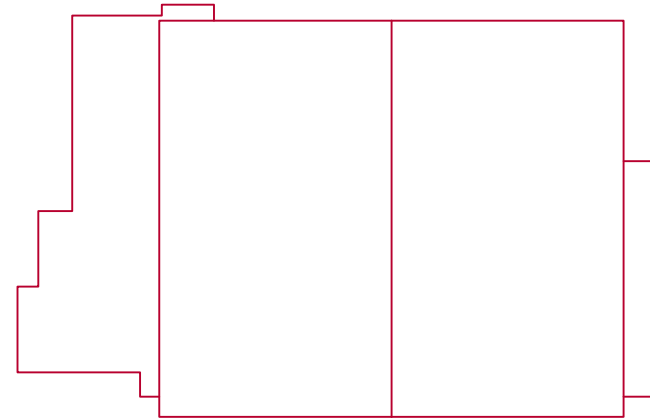


SECTION - CC'

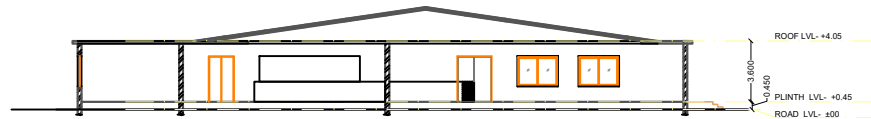
SCHOOL	DRAWN BY:	TOPIC:	SHEET CONTENT:	GUIDE:	SHEET NO.:
BBDU	SYED MOZAHIR ABBAS	ECO RESORT AT KALAGARH , PAURI GARHWAL ,	RECREATION ACTIVITY BLOCK	AR. K.GHANSHYAM YADAV	10



GROUND FLOOR PLAN



ROOF PLAN

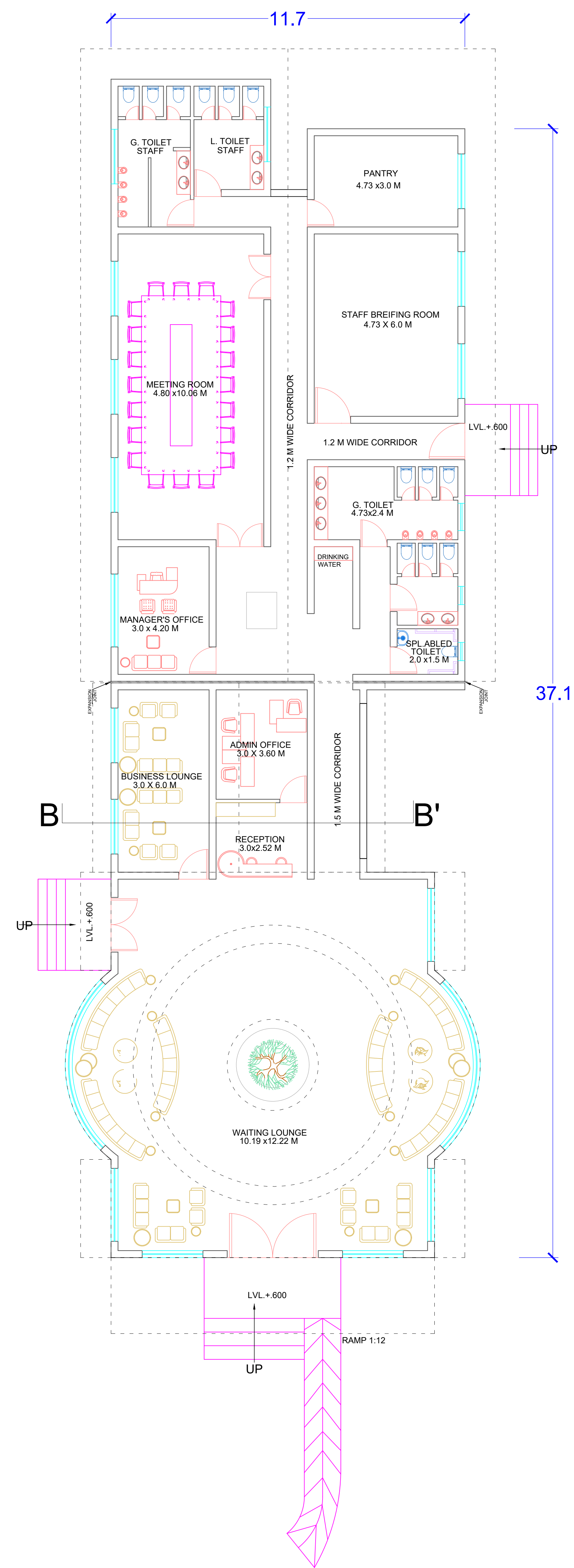


SECTION- AA'

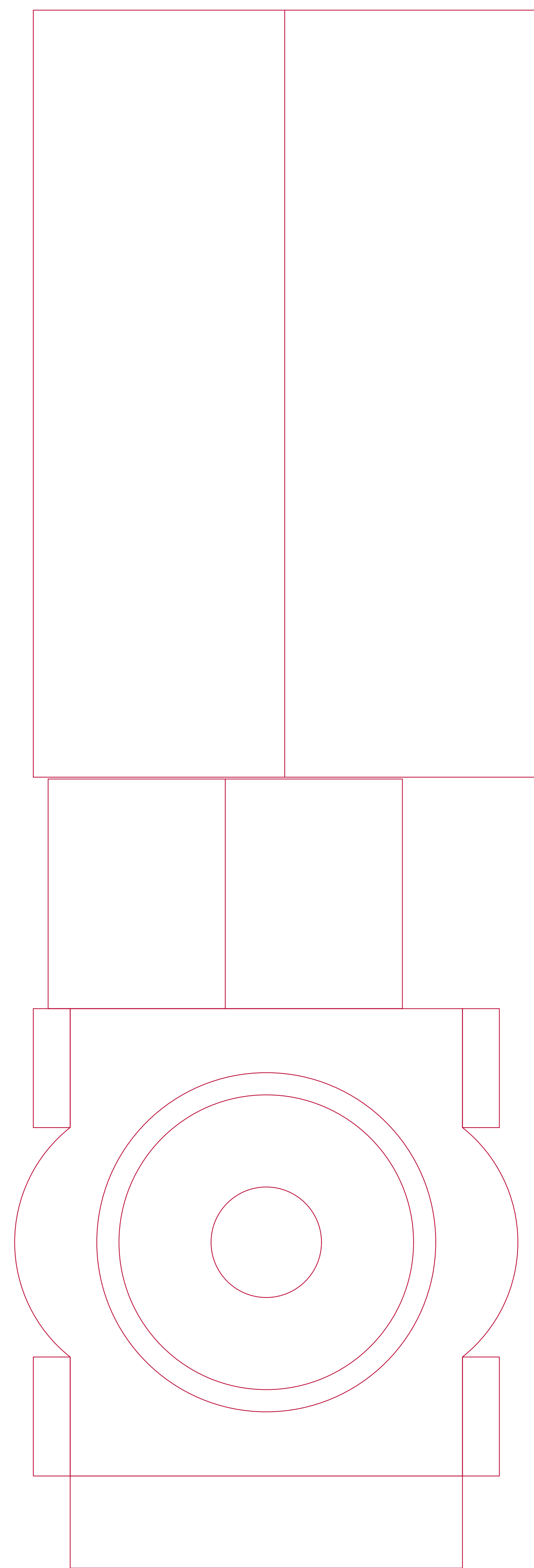


ELEVATION

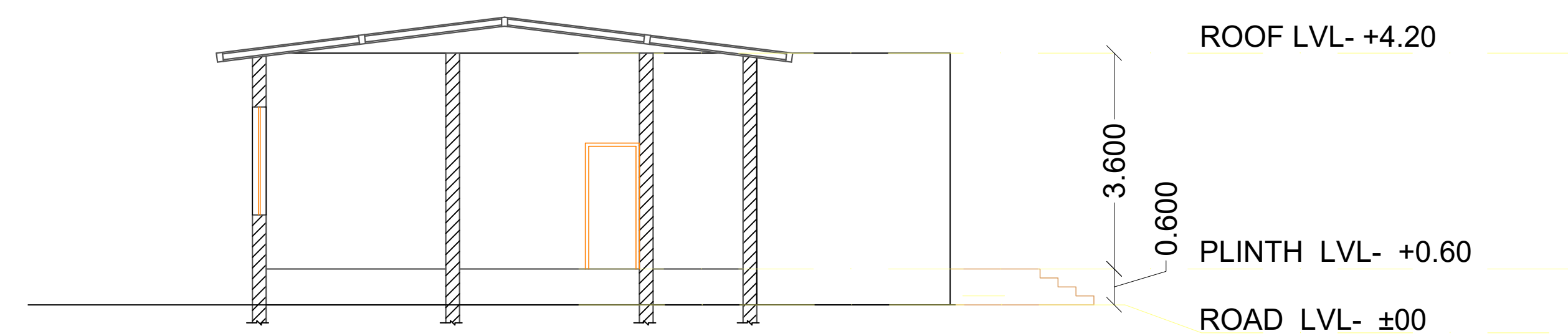
SCHOOL	DRAWN BY:	TOPIC:	SHEET CONTENT:	GUIDE:	SHEET NO.:
BBDU	SYED MOZAHIR ABBAS	ECO RESORT AT KALAGARH , PAURI GARHWAL ,	RESTAURANT BLOCK	AR. K.GHANSHYAM YADAV	09



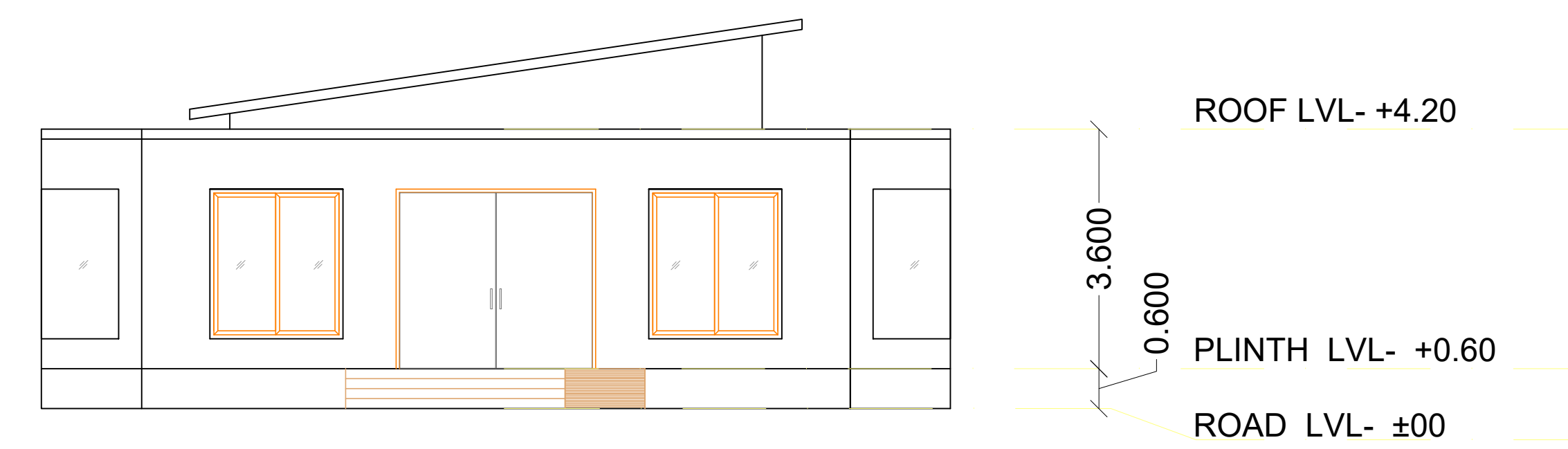
GROUND FLOOR PLAN



ROOF PLAN



SECTION - BB'



FRONT ELEVATION

SCHOOL	DRAWN BY:	TOPIC:	SHEET CONTENT:	GUIDE:	SHEET NO.:
BBDU	SYED MOZAHIR ABBAS	ECO RESORT AT KALAGARH , PAURI GARHWAL ,	ADMINISTRATION BLOCK	AR.K.GHANSHYAM YADAV	08





# ECO RESORT AT KALAGARH, PAURI GARWAL, UTTARAKHAND

## TAJ BEKAL RESORT & SPA, KERALA

The Taj Bekal Resort & Spa is a luxurious eco resort located in Kerala, India. Situated in the serene and picturesque destination of Bekal, the resort offers a unique blend of luxury, sustainability, and cultural immersion. Some key features and highlights of the Taj Bekal Resort & Spa:

**Location:** Kappil Beach, Kasargod, Kerala.

**Sustainable Design:** Sustainable design principles to minimize its environmental impact. The architecture seamlessly blends with the natural surroundings, incorporating local materials, traditional craftsmanship, and eco-friendly construction techniques.

**Luxurious Accommodations:** The resort offers a range of luxurious accommodation, including villas and rooms with contemporary design and modern amenities.

**Ayurvedic Spa:** The Jiva Spa offers healing therapist, yoga treatments and traditional Indian massages.

**Cultural Immersion:** Provides opportunities for guests to immerse themselves in the local culture and heritage.

**Eco-friendly Practices:** The resort is committed to sustainable practices, including energy conservation, waste management, and water efficiency. It utilizes renewable energy sources, implements recycling programs, and emphasizes responsible water usage to minimize its ecological footprint.

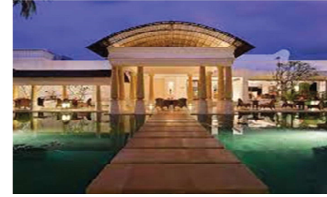
**Recreational Activities:** Activities like boating in the backwaters, exploring nearby villages, visiting historic sites, cycling, and experiencing traditional fishing techniques.

The Taj Bekal Resort & Spa in Kerala exemplifies the combination of luxury, sustainability, and cultural immersion. With its stunning location, sustainable design, luxurious amenities, and commitment to responsible practices.

**Location:** BEKAL, KERALA

**Distance from Mangalore Airport :** 76 km (approx.)

**Distance from Kasaragod Railway Station:** 12 km (approx.).



## ARCHITECTURAL FEATURES

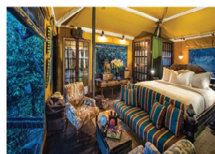
The architectural features of Taj Bekal Resort & Spa in Kerala showcase a harmonious blend of traditional elements, local materials, and contemporary design. Here are some notable architectural features of the resort:

1. **Vernacular Architecture:** The resort's design draws inspiration from the traditional architecture of Kerala, known as "Nalukettu," characterized by sloping roofs, wooden pillars, and intricate carvings.
2. **Courtyard Design:** The resort follows a courtyard layout, reminiscent of traditional Kerala homes. This design approach creates a central open space surrounded by the different wings of the resort, natural ventilation, ample daylight.
3. **Sustainable Materials:** Local materials, such as laterite stone, wood, and bamboo are used in construction.
4. **Water Features:** Water features like ponds, reflecting pools, and cascading waterfalls.
5. **Open Spaces and Panoramic Views:** Resort's design maximizes the use of open spaces and offers panoramic views of the surrounding. Large windows, balconies, and terraces provide unobstructed views of the backwaters, lush greenery, and the Arabian Sea, creating a seamless connection between the indoors and outdoors.
6. **Eco-friendly Design:** Eco-friendly design principles passive cooling techniques, such as cross-ventilation and shading devices, are incorporated to reduce the reliance on artificial cooling systems.
7. **Integration with Nature:** The resort's architecture seamlessly integrates with the natural surroundings.

## SHINTA MANI WILD, COMBODIA

Shinta Mani Wild is a unique and extraordinary eco-resort located in Cambodia, nestled within the lush and untouched wilderness of the Cardamom Mountains. Designed by renowned architect Bill Bensley, this resort offers a one-of-a-kind experience that combines luxury with a deep commitment to conservation. Here are some notable features of Shinta Mani Wild:

1. **Tented Camp Concept:** Shinta Mani Wild embraces a tented camp concept, where guests stay in luxurious and beautifully designed tents that blend seamlessly with the natural surroundings.
  2. **Sustainable Design:** Reflects a strong emphasis on sustainability. The resort's structures are built using locally sourced materials. The design seamlessly integrates with the surrounding landscape, ensuring a minimal carbon footprint and preserving the natural beauty of the area.
  3. **Remote Location:** Shinta Mani Wild is located in a remote and untouched part of the Cardamom Mountains, providing guests with a truly secluded and immersive experience. The resort is accessible only by a zipline or a scenic boat ride along the river, enhancing the sense of adventure and exclusivity.
  4. **Conservation Focus:** Shinta Mani Wild is dedicated to the conservation and protection of the Cardamom Mountains' unique ecosystem.
  5. **Wildlife Encounters:** The resort offers a range of activities like Guided hikes, boat safaris, and wildlife spotting excursions provide opportunities to encounter rare and endangered species, including gibbons, Asian elephants, and a variety of bird species.
  6. **Adventure Experiences:** That allow guests to immerse themselves in the natural surroundings. Activities such as kayaking, paddleboarding, and trekking offer a chance to explore the pristine wilderness and discover hidden gems.
  7. **Culinary Excellence:** The resort offers exceptional dining experiences with a focus on sustainability and locally sourced ingredients.
- Shinta Mani Wild is a testament to the harmonious coexistence of luxury and environmental conservation. Its unique design, commitment to sustainability, remote location, conservation focus, wildlife encounters, adventure experiences, and culinary excellence make it a truly remarkable and unforgettable eco-resort in Cambodia.



- Location - COMBODIA
- Distance from Sihanouk International Airport : 98 km (approx.)
- Distance from Sihanoukville Railway Station: 9.8 km (approx.).

## ARCHITECTURAL FEATURES

Shinta Mani Wild is a unique luxury eco-lodge located in the wilderness of Cambodia. Here are some of the architectural features of Shinta Mani Wild:

1. **Tented Camp Design:** The lodge consists of 15 luxurious tents, each designed with a contemporary yet rustic aesthetic. The tents are raised above the ground on stilts to minimize the impact on the surrounding environment.
2. **Natural Materials:** The architectural design incorporates the use of natural materials such as bamboo, locally sourced stone, and recycled wood. These materials blend seamlessly with the natural surroundings, creating a harmonious and eco-friendly atmosphere.
3. **Canopy Walkways:** To navigate the challenging terrain of the wilderness. These walkways connect the tents to various facilities and allow guests to explore the diverse flora and fauna without disturbing the environment.
4. **Water Features:** Water is a central element in the design of Shinta Mani Wild. The lodge is built along the banks of the Tmor Rung River, and various water features, including waterfalls and ponds, are incorporated into the architecture.
5. **Sustainable Practices:** Shinta Mani Wild is committed to sustainability and minimizing its environmental footprint. The lodge utilizes solar power for electricity, employs water recycling systems, and implements eco-friendly waste management practices.
6. **Open-air Living Spaces:** Open-air living spaces that allow guests to connect with nature. Large balconies and verandas provide panoramic views of the surroundings.
7. **Integration with Nature:** The architectural design of Shinta Mani Wild focuses on seamlessly blending with the natural environment. The lodge is nestled among trees, and the tents are strategically positioned to maximize privacy while still offering stunning views.

