

# **THESIS REPORT**

on

## **POD THEME HOTEL IN RAEBAREILY, UTTAR PRADESH**

A THESIS SUBMITTED IN PARTIAL FULFILLMENT OF THE  
REQUIREMENT FOR THE DEGREE OF

## **BACHELOR OF INTERIOR DESIGN**

BY

**ANUSHKA RAJ**

(ROLL.NO - 1190107005)

SESSION : 2022 - 2023

UNDER THE GUIDANCE OF  
**PROF. SANGEETA SHARMA**



SCHOOL OF ARCHITECTURE & PLANNING

**BABU BANARASI DAS UNIVERSITY, LUCKNOW**

**CERTIFICATE**

NAME OF STUDENT: ANUSHKA RAJ  
ROLL NO : 1190107005

DEPARMENT : .....

THESIS TITLE : POD THEME HOTEL IN RAEBAREILY, UTTAR PRADESH  
THESIS GUIDE : PROF. SANGEETA SHARMA (HEAD OF DEPARTMENT)

REMARKS : SATISFACTORY / NOT SATISFACTORY (IN CASE OF NOT SATISFACTORY GIVE COMMENTS) :  
.....  
.....  
.....

\_\_\_\_\_  
SIGN OF THESIS GUIDE

\_\_\_\_\_  
SIGN OF EXTERNAL EXAMINER 1

\_\_\_\_\_  
THESIS COORDINATOR

\_\_\_\_\_  
SIGN OF EXTERNAL EXAMINER 2

\_\_\_\_\_  
SIGN OF HEAD OF DEPARTMENT

\_\_\_\_\_  
SIGN OF DEAN OF SCHOOL

## **ACKNOWLEDGEMENT**

First and foremost, praises and gratitude to God, for his blessings throughout my research work to strengthen me to complete the research successfully.

I am overwhelmed in all humbleness and gratefulness to acknowledge my depth to all those who have helped me to put my ideas into something above the level of simplicity and into something concrete. I want to thank School of Architecture & Planning, for allowing me to go forward with this topic, thereby providing me with all necessary documents and books.

In completing this thesis report on project titled “**POD THEME HOTEL IN UTTAR PRADESH**”, I had to take the help and guidance of a few respected people, who deserve my greatest gratitude.

I would acknowledge my guide, **Prof. Sangeeta Sharma**, for her constant motivation and for helping me decipher problems and possible solutions for my commission. Her guidance, indulgence, dynamism, optimism, vision, sincerity and encouragement have deeply inspired and helped me in completing my thesis in a productive manner.

I would like to show my gratitude to \_\_\_\_\_ and \_\_\_\_\_ as my thesis coordinators, for keeping me well-informed about the methodology to carry out the study and to present the thesis works as clearly as possible. I would also extend my gratitude to all jurors for their invaluable suggestions and advice to achieve a better approach and proceed in the right direction.

Any attempt at any level can't be satisfactorily completed without the support and guidance of my parents. With that I am extremely grateful for their love, prayers, care and sacrifice and also for educating and preparing me for my future.

Here, I thank all people for their direct and indirect help in completing project report.

## TABLE OF CONTENTS

1. CERTIFICATE.....	2
2. ACKNOWLEDGEMENT.....	3
3. INTRODUCTION.....	5
4. HISTORY & BACKGROUND.....	6
5. AIM & OBJECTIVE.....	6
6. PROGRAMME BRIEF.....	7
7. SCOPE & LIMITATION.....	8
8. METHODOLOGY.....	9
9. PROJECT REQUIREMENT.....	10
10. SITE ANALYSIS.....	11 - 15
11. CASE STUDY.....	16 - 20
12. LITERATURE STUDY 1 .....	21 - 27
13. LITERATURE STUDY 2 .....	28 - 31
14. THESIS WORK .....	32
15. CONCEPT.....	32
16. WORKING DRAWINGS 2D .....	33 - 38
17. SKETCHUP 3D DRAWINGS .....	39 - 52



## **INTRODUCTION**

- A pod hotel is a very dynamic social space with a comfortable design and attractive features.
- It has a capsule kind of a chamber to the length and width of a single bed with a sufficient height for a hotel guest to crawl in and sit up on the bed.
- The chamber walls of pod is made up of wood, metal or any rigid material but mostly of fibreglass or plastic.
- Each pod includes a small television, air conditioning and electronic console and power sockets with free Wifi and toiletries.
- The hotel also consists of luggage room, small locker, mirror, reading lights in addition to interior light, mobile charging, smoke detector etc.
- There might be a pleasant lounge with cushioned seats, newspaper and reading materials.
- It was divided into 3 categories : 38 classic pods, 10 private pods, 2 pods for differently abled.
- The pod hotels are also known as capsule hotels.

## **HISTORY AND BACKGROUND**

The word pod initially came from Japan and so a pod hotel is a form of Japanese hotel that consists of multiple small bed sized rooms known as pods with all the facilities in it.

In 1979, Osaka became the first city to build a pod hotel in Japan that is very cheap in cost .

When the hotel is invented many people did not like the idea of living in a small cage after paying also so firstly the pods are used by the labors in starting and after some time more pods are opened and people of the city started liking the concept.

The hotel ranges in size of 50-150 pods according to the area of the space.

## **AIM AND OBJECTIVE**

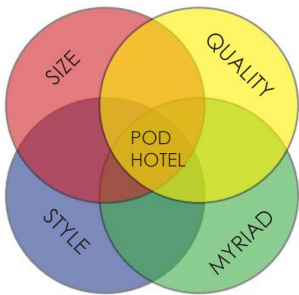
These long cube like pods are around 6 - 7 feet long and 3 feet tall. The aim is to provide just enough room for individuals to feel at ease and enjoy a decent night's sleep without all the unnecessary frills that takes space and waste the time and money.

It offers basic lodging and is in budget for the customers who do not want or afford bigger rooms or traditional hotels.

**The pod hotel was chosen because of its excellent facilities with a pleasant stay. This hotel is mostly afforded by the people who are business travellers that only stay for a day.**

# PROGRAMME BRIEF

## HOTEL THEME



## TARGET AUDIENCE



Solo  
Traveller



Group  
Traveller



Sleep + Workplace = POD



Business  
Traveller



CHECK-IN



LOCKER



SHOWER



SLEEP



FREE  
WI-FI



MAP  
GUIDING



CAFETERIA

- Small cafe or restaurant provides tea, snacks, lunch, dinner etc.
- Seating area provided
- Opens 24 x 7 for the service.
- Small rooms are provided with all the amenities.
- Separate pods are also divided according to their use.

## **SCOPE**

A pod theme hotel is made for a guest who is looking for an affordable room without any extra facilities. .

These kind of hotels have come a long way from its beginnings and are gaining recognition not only in Japan and other Asia Pacific countries but also all around the world. A rising trend in budget travel inevitably increased the demand for capsule hotels.

Hotel enterprises and owners are revolutionizing the hospitality industry overall by providing an innovative design that is still cost-effective and flexible.

Hotel businesses try to attract more and more guest to this comparatively novice concept and their efforts have started to reveal colors of success over the last few years.

## **LIMITATION**

The focus is on the interiors only so the architectural details are out of the scope .

As major focus is on the interiors, the drawings for services are also out of scope. In depth structural details are not a part of the design.

I will work on the interiors while learning and implementing the elements and principles of designing in the suitable ways.

The user of the space & their needs are the first priority while designing the space

# METHODOLOGY

## Understanding the project

- To study the impact of different designing elements & principles on human psychology for the hotel theme.
- To study the ergonomics of the furniture incorporated in the hotel.

## Site Analysis

- Selection of site
- Site area and plans
- The climate & surroundings.
- Area analysis

## Literature Study

Data collection through books, generals, research, virtual study, etc.

## Case Study

To study other pod type hotels with respect to interior.

## Final Design

## Elective

- Electrical and Lightening
- Furniture Design and Layout

## View

## **TENTATIVE PROJECT REQUIREMENT**

Reception

Waiting Area

Lobby Area

Manager's room

Common washroom

Locker room

POD Rooms

Ladies Room

Duo pod room

Cafeteria

Working Area

Seperate washrooms

Group pods

## SITE ANALYSIS

Raebareli is a city in Indian state of Uttar Pradesh. It is the administrative headquarters of Raebareli district and a part of Lucknow Division. The city is situated on the banks of the Sai river, 82 km (51 mi) southeast of Lucknow. It possesses many architectural features and sites. As of 2011, Raebareli has a population of 191,316 people, in 35,197 households.

Location Space : RAIBARELY ROAD, UTTAR PRADESH

Area : 600sqmt. or 6450sqft

Space : Commercial space

### Introduction to the Site

**AIM** - To design a pod hotel. The aim is to provide just enough room for individuals to feel at ease and enjoy a decent night's sleep without all the unnecessary frills that takes space and waste the time and money.

**OBJECTIVE** - The pod hotel was chosen because of its excellent facilities with a pleasant stay. This hotel is mostly afforded by the people who are business travelers that only stay for a day.

**SCOPE OF WORK** - The design includes design concept, design development, zoning, connectivity etc.

**PROJECT FOCUS** - It offers basic lodging and is in budget for the customers who do not want or afford bigger rooms or traditional hotels.

**HISTORY AND BACKGROUND** : The word pod initially came from Japan and so a pod hotel is a form of Japanese hotel that consists of multiple small bed sized rooms known as pods with all the facilities in it. Osaka became the first city to build a pod hotel in Japan that is very cheap in cost . The hotel ranges in size of 50-150 pods according to the area of the space.

## **SITE STUDY AND SURROUNDING**



## **BACHHRAWAN, RAEBARELI**



### SITE ACCESSIBILITY

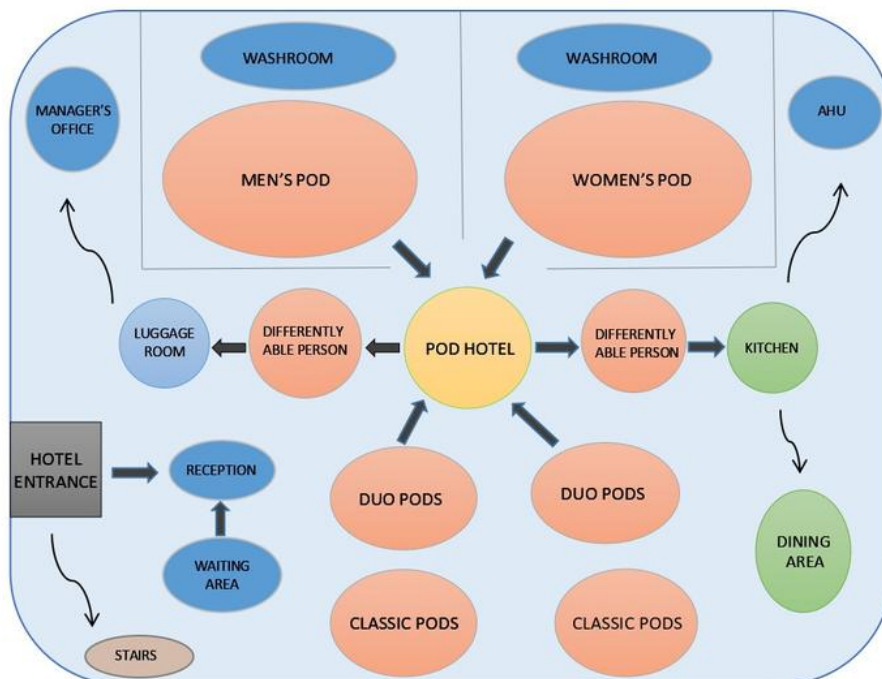
- The site is situated at Churwa road, Raebareli. Churwa is an area in Bachhrawan block of Rae Bareli district, Uttar Pradesh, India. It is located 6km from Bachhrawan .
- The site is taken for the construction of hotel here .
- The main road passing from the area is Raebareli-Lucknow road.
- The site is accessible to all nearby areas and utilities .

### COORDINATES OF THE SITE

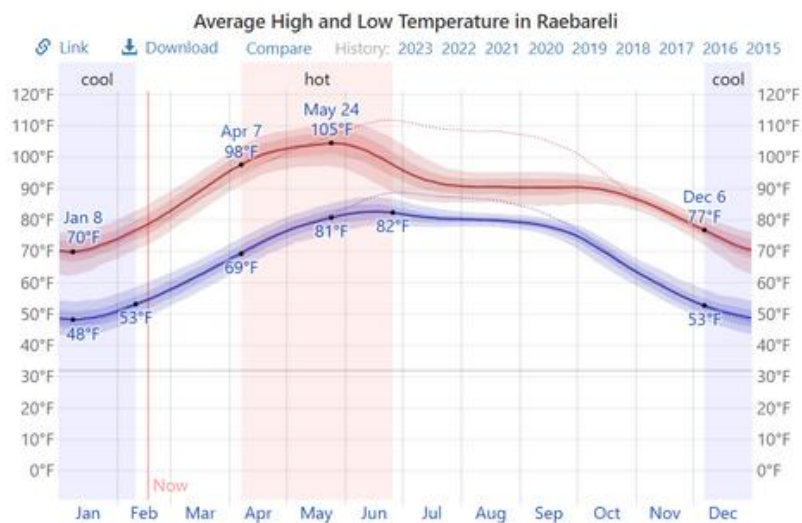
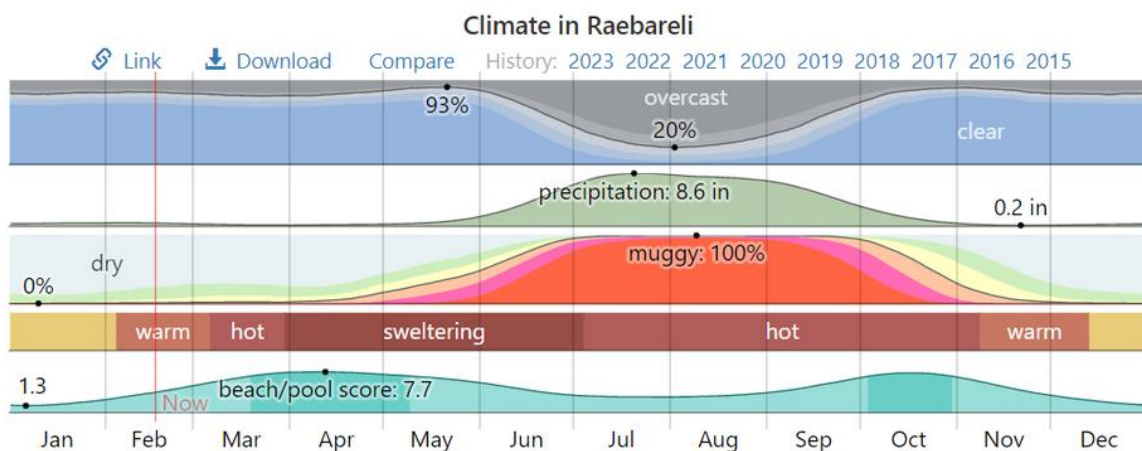
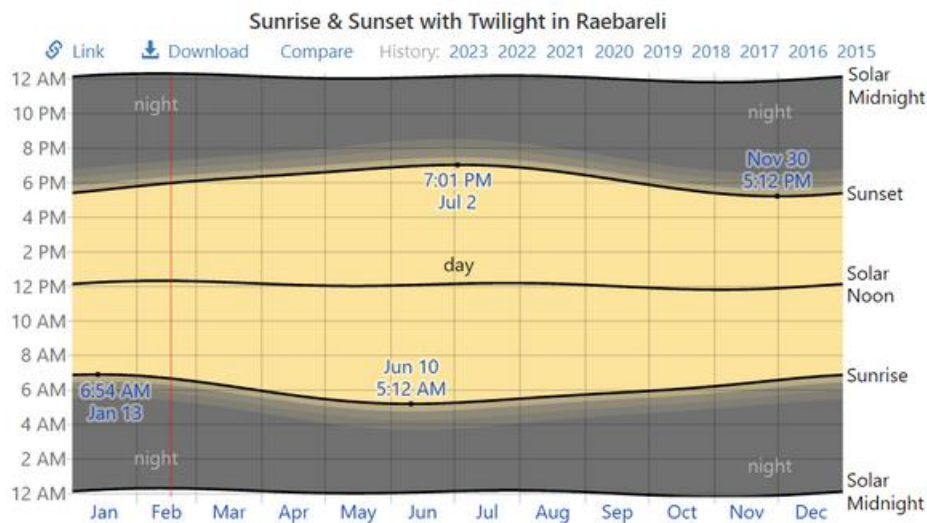
LONGITUDE - 81°04'14.9"E

LATITUDE - 26°31'03.1"N

### BUBBLE DIAGRAM

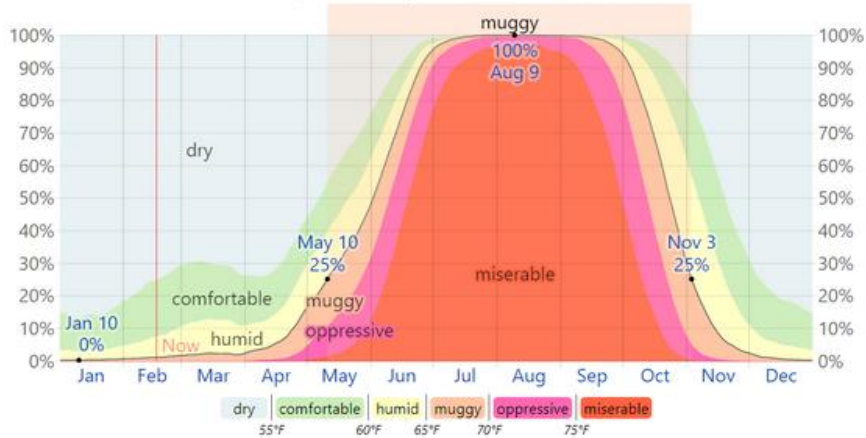


# CLIMATE GRAPH



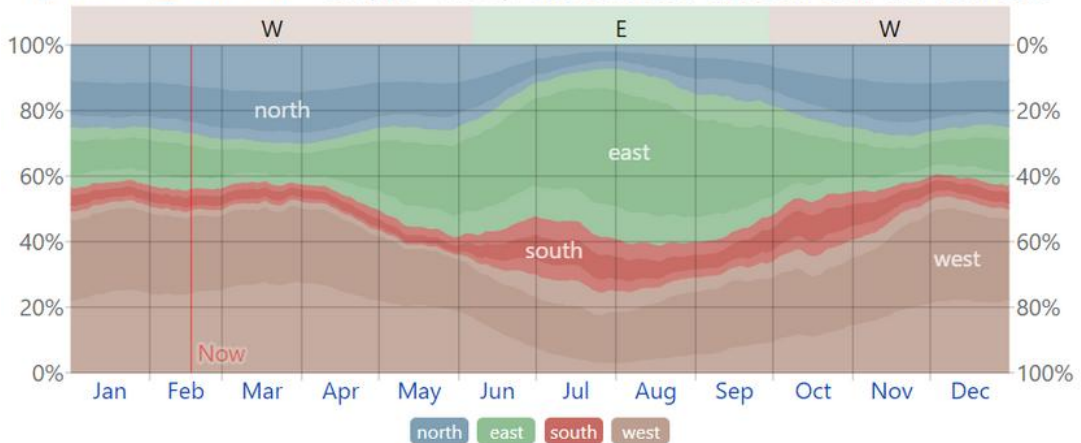
### Humidity Comfort Levels in Raebareli

[Link](#) [Download](#) [Compare](#) History: 2023 2022 2021 2020 2019 2018 2017 2016 2015



### Wind Direction in Raebareli

[Link](#) [Download](#) [Compare](#) History: 2023 2022 2021 2020 2019 2018 2017 2016 2015



### NEAR BY UTILITIES FROM SITE



#### Airport

Nearest airport is Chaudhary  
Charan Singh International Airport  
70KM - 1 Hour



#### Gas Station

Nearest gas station is  
Bharat Petroleum.  
650M - 8min



#### Railway Station

Nearest railway station is Charbagh  
railway station - 73KM - 1 Hr 12 min  
Bachrawan station - 6KM - 12min



#### Hospital

Nearest hospital is  
ARADHYA hospital  
6.2 KM - 10 min



#### Bus Station

Nearest bus station is Bachrawan  
bus stand.  
82KM - 15 min



#### ATM

Nearest ATM machine is  
435M - 5 min

# CASE STUDY

## URBANPOD HOTEL, MUMBAI CENTRAL RAILWAY STATION

**INTRODUCTION** - The pod hotels provide guests with private enclosed spaces, beds and basic amenities for a much lesser price than the hotel rooms.

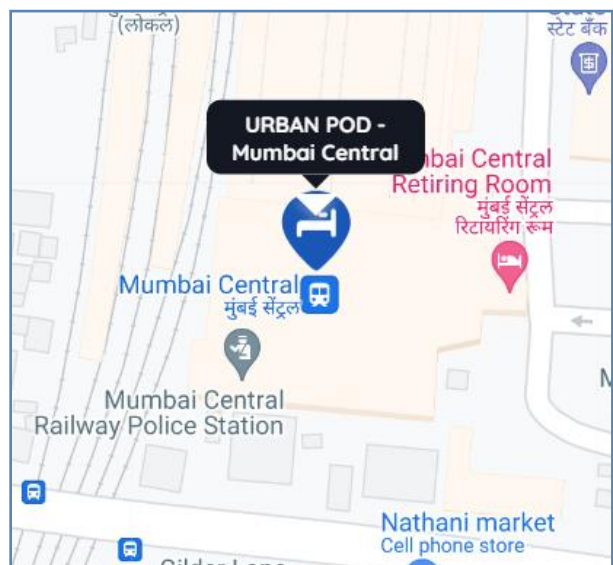
**Site** - MUMBAI RAILWAY STATION

**Area** - 4000 sqft.

**Project** - COMMERCIAL SPACE

**Architect** - Formwerkz, a Singapore-based architecture firm

**Client** - Satyen Ashwin Gandhi and Hiren Ashwin Gandhi.



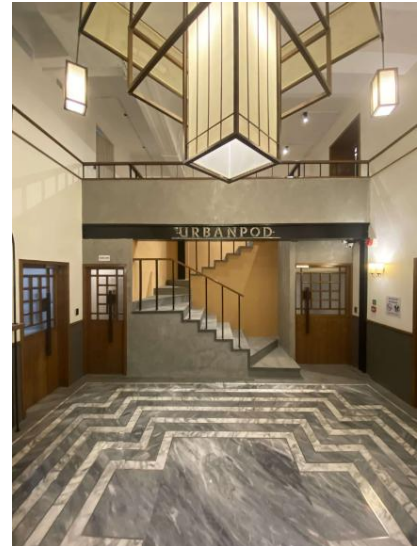
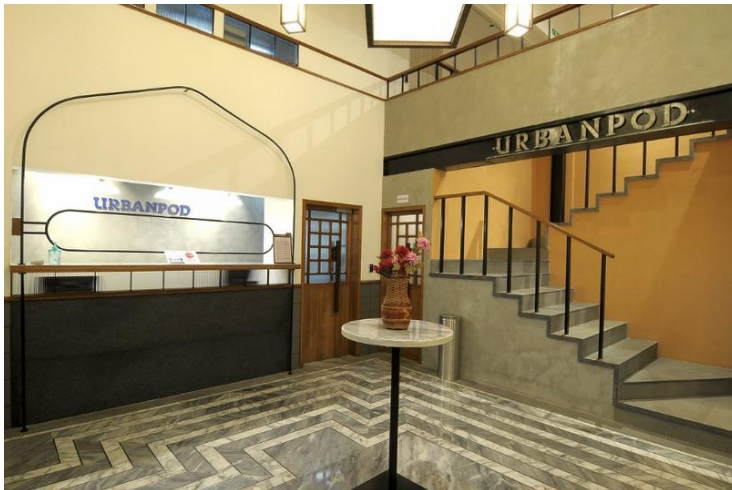
Urban Pod is located at the Mumbai Central Railway Station. Located in Andheri East, the urban pod in Mumbai is the first pod hotel in India.

This hotel features modern capsule spaces namely pods in the variants of classic, private, ladies and differently-abled. All the available pod room in Mumbai comes with complimentary breakfast. It also provides lockers and WIFI to people.

Concept and catering to the new-age traveler's , business & leisure, Urban pod is modern, stylish & minimalistic. The concept of capsule hotels in Mumbai is more popular among solo travelers

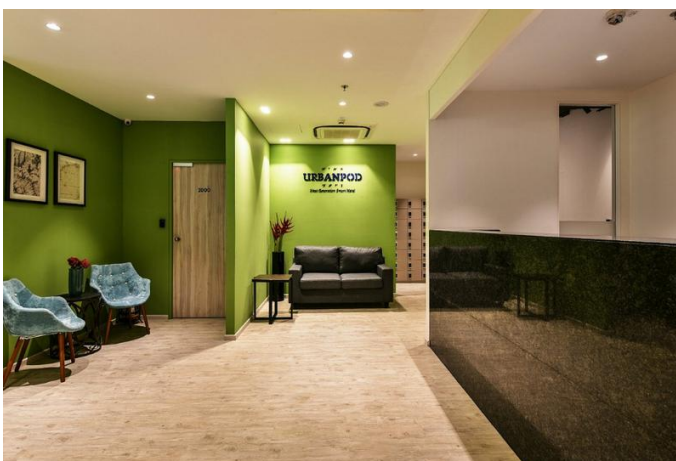


These capsule hotels near Mumbai airport or train station also offers a quick nap package for those who want to book a place for a few hours to sleep or shower. These nap packages start from Rs. 250 (the price could vary).



It spreads over an area of 4000 square feet with a mezzanine floor, and has 50 capsule-like rooms including classic pods, private pods, separate pods for women and differently-abled .

The pods are of 3 categories - 30 classic pods, 8 ladies, 11 private pods and 1 differently abled passenger. The classic and ladies pods are for a single guest while the private pod has extra space within. The differently abled pod can fit up to two guests easily.



The prime thing to be happy and notice is that - this hotel costs one-third of what you had pay in other hotels .



**Classic Pod** - A classic pod at Mumbai pod hotel comes up with complimentary Wi-Fi, inbuilt satellite TV, power sockets, USB ports, and lighting. The pod spaces are also fully secured to provide personal safety to the guests.

**Ladies Pod** - The Ladies pod stay in Mumbai is a unique space exclusively designed for female guests only. The space is provided with the most advanced safety features to enhance the privacy of female travelers. The standard facilities provided at a female pod are - Full privacy inside the pod, free baggage lockers outside pod, Satellite TV, Complimentary Wi-Fi, Mood Lightings, etc .

**Private Pod** - Private pods are specifically designed for people who need privacy or don't want any external disturbance. The room is provided with a personal space within the pod to avoid any outer disturbance. People can select from a wide range of affordable private pods for basic night .





## **Advantages of Staying in a Pod Hotel in Mumbai**

**Extra cost saving** - The pod hotel Mumbai price ranges from Rs. 599 for 12 hours to Rs. 1199 for 24 hours with bed and shower facilities included. Thus when you are travelling then pods spaces are a good deal.

**24 hours check-in** - The most spectacular feature of a capsule hotel in Mumbai is that it is based on a 24-hour front desk assistance format. It is important for people who want to save some extra money by flying during some odd hours.

**Quiet environment** - Guests can experience a sound sleep just like at the comfort of their home. Pod spaces are made free from any loud noises but the lounge area is kept open for any social interaction needed.





# LITERATURE STUDY- 1

## Nine Hours Capsule Hotel, Osaka, Japan

### Site Details

Category : Shared Space

Location : Osaka, Japan

Area : 994 sqmt.

Architects : Naruse Inokuma Architects

Lead Architects : Yuri Naruse, Yohei Yamagata

Project completion : 2019 April



A pod hotel is a very dynamic social space with a comfortable design and attractive features. These hotels are also known as capsule hotels. They are originating from Japan with a new trend of quirky and affordable stays. Their compact design allows many people to stay in the same room, with different capsule pods and with the added privacy of fully closing doors to them.

The first capsule hotel in the world opened in 1979 in the Osaka region of Japan. It provides cheap, basic overnight accommodation for guests who do not require or who cannot afford the services offered by more conventional hotels. The idea behind this trendy capsule hotel chain in Kyoto, Narita, Japan and Tokyo is that you get to sleep for 9 hours peaceful sleep after a stressful day.

## **Aim and Objectives**

These long cube like pods are around 6 - 7 feet long and 3 feet tall. The aim is to provide just enough room for individuals to feel at ease and enjoy a decent night's sleep without all the unnecessary frills that takes space and waste the time and money. It offers basic lodging and is in budget for the customers who do not want or afford bigger rooms or traditional hotels.

The pod hotel was chosen because of its excellent facilities with a pleasant stay. This hotel is mostly afforded by the people who are business travelers that only stay for a day



## **History and Background**

The word pod initially came from Japan and so a pod hotel is a form of Japanese hotel that consists of multiple small bed sized rooms known as pods with all the facilities in it. In 1979, Osaka became the first city to build a pod hotel in Japan that is very cheap in cost .

When the hotel is invented many people did not like the idea of living in a small cage after paying also so firstly the pods are used by the labors in starting and after some time more pods are opened and people of the city started liking the concept. The hotel ranges in size of 50-150 pods according to the area of the space.

The 9h Capsule hotels have everything we need and with their outstanding locations are a great place to stay for a night. Paired with beautiful design and an unusual experience they are a must-visit .

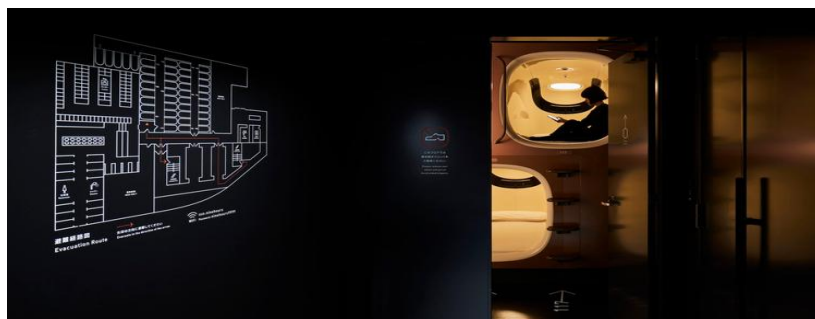
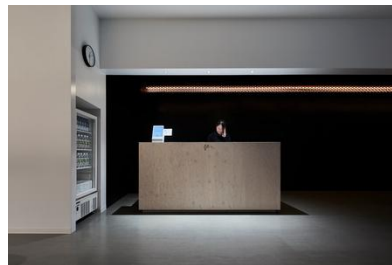
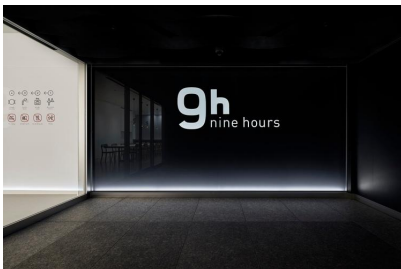
## Interior Details

Tokyo-based architecture studio Naruse Inokuma Architects has designed this 9hour capsule hotel in Osaka, Japan, pushing the boundaries of traditional capsule hotels with more functionality, a rich comfort and staying experience.

The 994-square-metre hotel has been designed as a project that revolutionizes capsule hotel concept, setting a new standard for these types of hotels.

It features a large number of extremely small ‘rooms’ (capsules) intended to provide cheap, basic overnight accommodation for guests who do not require or who cannot afford the services offered by more conventional hotels.

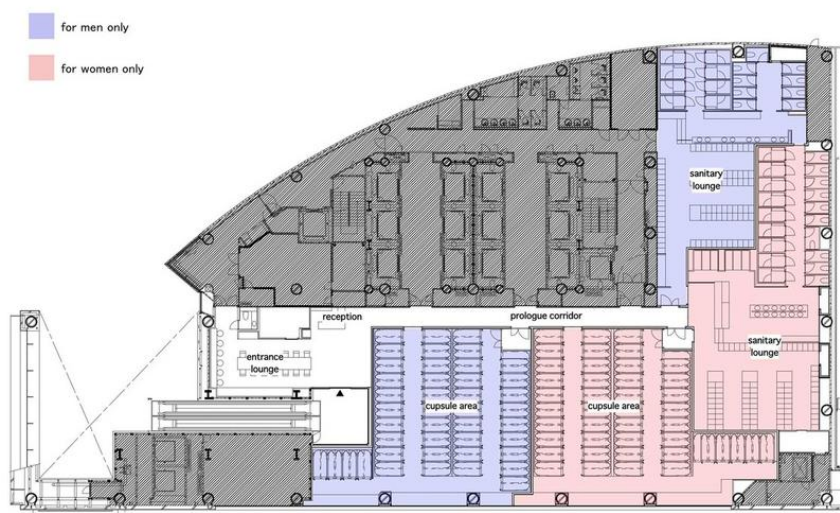
These long cube like pods are around 6 - 7 feet long and 3 feet tall. It is designed to provide just enough room for individuals to feel at ease and enjoy a decent night’s sleep without all the unnecessary frills that takes space and waste the time and money.



The hotel plan includes reception, entrance lounge, prologue corridor, sanitary lounge, capsule area (separate men's pod and separate women's pod), sanitary lounge, kitchen area, AHU, locker area, working area, etc.

It has a capsule kind of a chamber to the length and width of a single bed with a sufficient height for a hotel guest to crawl in and sit up on the bed.

The hotel has different separate sections and floors for men's only pods and women's only pods . Therefore it also includes duo pods, group pods, pod rooms for a group of people of the same category.



Each pod includes a small television, air conditioning an electronic console and power sockets with free Wifi and toiletries. The hotel also consists of luggage room, small locker, mirror, reading lights in addition to interior light, mobile charging , smoke detector etc.

The Pods itself are minimalistic. As you enter you will find a blanket and their signature pillow (available for purchase) and that is it. The small dashboard at the end of the Capsule features 1 USB dock as well as a knob to dim the light and another one playing Ocean sound. There are also two small alcoves where you can put your phone or other small items. And that is it!

The 125-room 9 Hours Capsule Hotel is a five-minute walk from Kawaramachi Train Station in the Shimogyo-Ku district

Inside, stark black decorations and furniture that were contrast of the minimalist whitewashed interiors, as it reduces stress and gets you well-rested.

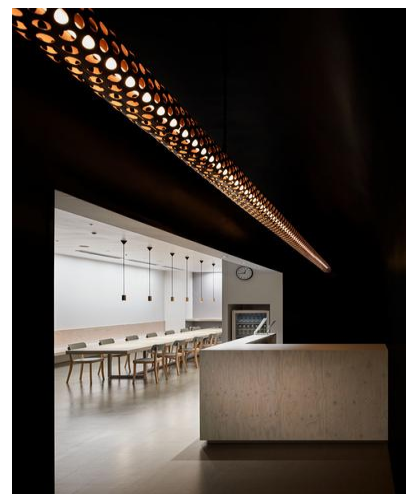
The gender-segregated rooms each have a dedicated elevator. Separating males from females is still an essential part of Japanese culture.



Nine Hours offers spacious pods with sufficient ceiling height to avoid a claustrophobic feel. So you can sit up when you are awake without hitting your head .

A sliding screen to shut the pod - with a traditional touch for a modern space. You can stay in a luxury pod with an en-suite shower for a little more money.

The communal bathrooms follow the clean, state-of-the-art design of the rest of the capsule hotel's premises. Here the shared bathrooms are stylish and clean.

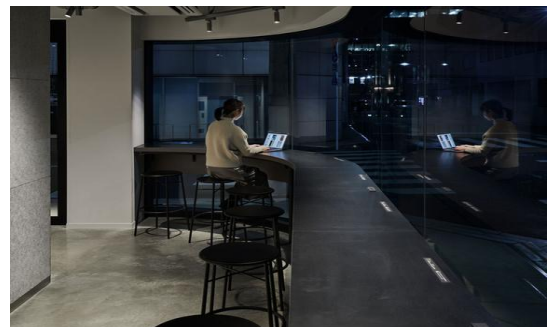




There is plenty of dedicated storage for your luggage and personal items. And there is a separate locker to keep your shoes, as you can't wear them in the rooms. It's another clever solution to keep noise of shoes to every area to a minimum level.

The 4 stages of the capsule hotel stay into 4 scenes comprised of the “reception,” “prologue corridor,” “sanitary lounge” and “sleeping pod” spaces.

By selecting the most suitable colors, materials and lighting for each of these functions, we were able to realize a functional hotel that is also rich in the joys of the hotel stay – from the “welcoming” to the “excitement,” “relaxation” and “ultimate sleep experience



## Signage Details of Pod

Even if you don't speak a word of Japanese, you'll be fine, as everything is cleverly indicated. The two-leveled capsules are numbered and glow at night, so you can find your way even if you arrive late.

On the bright white corridors, stylish pictograms are painted on the floor, indicating the whereabouts of the shoe storage, dormitories, bathrooms, and communal spaces.

Every detail of the pod hotel is correctly mentioned on the walls and floors so that people can easily find a way for everything without coming back to the reception



# CONCEPT SHEET

**THOUGHT PROCESS** - The thought process behind designing is to target the individuals looking for a low budget, single night's stay for a time span of 9hour with all the amenities and variations of different pods



**THE 9HOUR CONCEPT** Nine hours replaces the three basic actions of 1h (washing away sweat) + 7h (sleep) + 1h (getting dressed) with time and named it "9h". The hotel strip away the unnecessary needs and provides what you really need with high quality.

**DESIGN CONCEPT** - Nine hours concept is simple to understand and is divided into 3 categories - hospitality, relaxation, quality sleep .



## MINIMALIST INTERIOR DESIGN

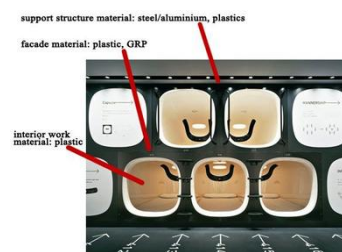
Each capsule includes panasonic's advanced system for good sleeping by computerized control lighting.

Room environment by panasonic / matsushita electric works — according to the time set, the light will wake you up.

## COLOUR SCHEME



**MATERIAL USED** - In capsule hotels prefabricated chambers made of metal, aluminium or fiberglass are stacked vertically and horizontally in a room



## LITERATURE STUDY- 2

### Sleepbox Pods

Sleepbox pods installed at Dulles International Airport

#### Site Details

Category : Shared Space

Location : Dulles International Airport

Area : 1,200 sqft. (111 sqmt.)

Architects : Arch Group, architecture studio //3877



The box-like units were originally designed by Arch Group, and have been installed at Dulles International Airport by local architecture studio //3877.

The 1,200-square-foot (111-square-metre) space in Washington Dulles International Airport, located post-security in the international concourse A, is filled with two rows of the bookable Sleepbox nap rooms.



A sleep pod, also known as nap pod, napping pod, or nap capsule, is a special type of structure or chair that allows people to nap . Users use the pods to take private sleep breaks, often aided by technology and ambient features.

Nap pods have emerged in corporate environments, hospitals, universities, airports and other public places.

Their supposed efficacy is rooted in research that suggests that 20-minute naps could reduce signs of stress, boost energy levels, improve focus, boost productivity, improve mood, enhance learning, and reduce the risk of cardiovascular disease.



Sleepbox has 16 bookable nap rooms that are available for hire for a minimum of one hour, to offers travellers a place to rest in privacy.

They are pre-fabricated with plywood and clad in white and grey veneers. The carpets are made from recycled nylon and the tiny spaces are completed with LED lighting. The units are powered by a wall outlet and are designed as part of a plug-in hotel concept.

The interior pieces are finished with plywood and have a built-in bed with flip-down desk.

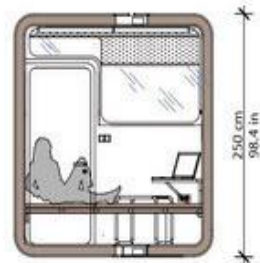
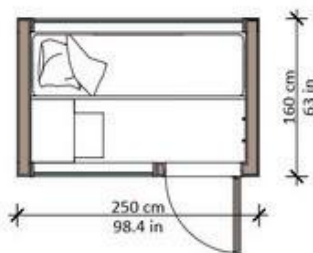


Wireless controls such as temperature control, privacy window tint, colored mood lighting and Bluetooth speakers outfit each unit.

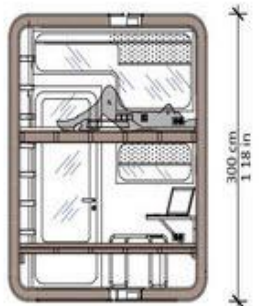
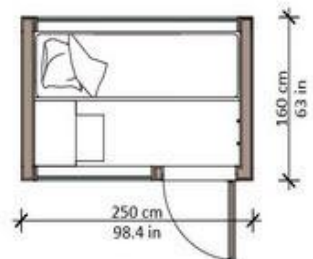
Sleepbox works with an app that allows the rooms to be booked, unlocked and controlled with a mobile device. Rooms can be rented for a minimum of an hour with extensions of available in 15 minutes increments.



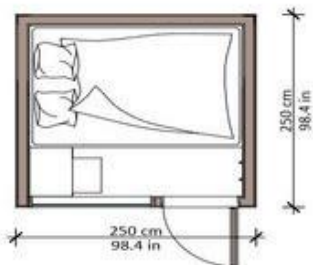
SINGLE



TWIN



DOUBLE



Each of the pods has a closable door, with a standard unit measuring 45 square feet (four square metres) and a compact room being 35 square feet (3.2 square metres).

## **Types of Sleepbox pods**

In addition to the already popular Classic model, now Sleepbox is launching four new products - Signature pods, Residence pods, Premier pods and Grand pods. Sleepbox pods have a bit of class and beauty in every detail, and was designed beyond imagination with a little bit of paradise, just for your style.

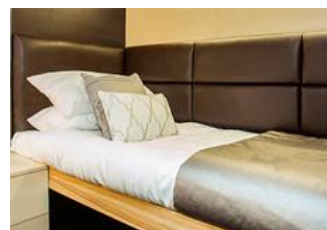
**The Classic** - The Classic is simply an old friend. Its simplicity oozes charm and appeals to a wide range of clients. If you prefer a natural feel, the distinctive beech effect teamed with a dark mahogany finish, the contrasting style only enhances the natural feel adding warmth and coziness to a relaxing environment.



**The Signature** - The contemporary and stylish interior is what makes the Sleepbox Signature so popular with our clients. The trendy combination of duck egg blue and cream interior give a laid back, yet sophisticated feel. From contemporary leather studded headboards to tactile scatter cushions, our Signature look offers the perfect finishing touch to the Sleepbox interior.



**The Residence** - The Sleepbox Residence quickly transforms a standard Sleepbox into a world of convenience. Fitted as standard is the luxury 3 sided leather effect quilted headboard which doubles up as a dayboard together with complimentary scatter cushions.



**The Premier** - The Sleepbox Premier isn't a classic Sleepbox, It combines a rich, yet exceptional interior which oozes poise and grace. It's curvaceous shape, gun metal and vibrant red interior quickly entices you into the tranquil setting.



**The Grand** - Every minute detail of the Sleepbox Grand has been carefully crafted. From its emphatic, curvaceous structure to its luxury and sumptuous interior, all features serve a purpose. The Sleepbox Grand Single is simply the perfect setting to kick back, relax and rejuvenate.



# THESIS : POD THEMED HOTEL



## CONCEPT



THE CONCEPT AND DESIGN OF THE POD HOTEL WAS INSPIRED FROM THE **APPLE AIRPOD** . SO THE FLOOR PLAN OF THE HOTEL WILL HAVE THE SHAPE OF AN AIRPOD.

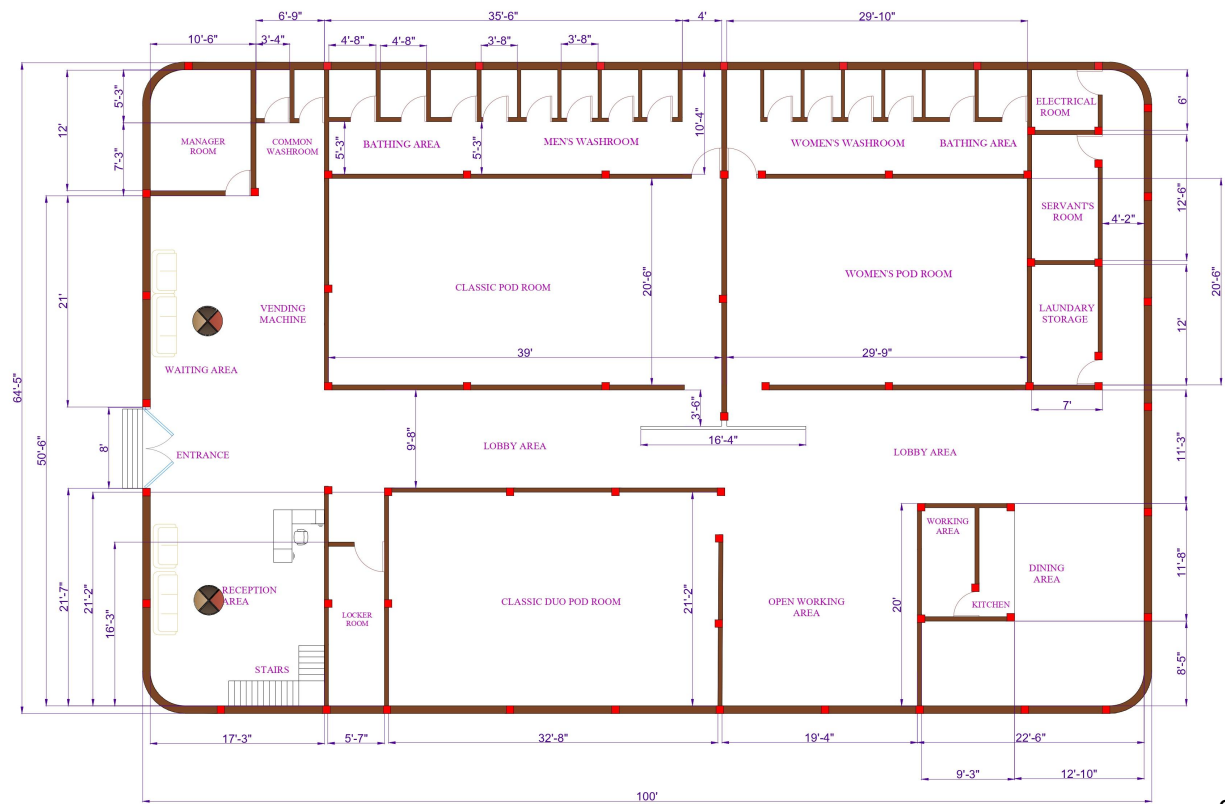
JUST AS THE AIRPOD HAVE 2 SECTIONS THE POD HOTEL IS ALSO DIVIDED IN 2 SECTIONS THAT PROVIDES PRIVACY AS WELL AS COMFORT FOR TRAVELLERS.

THE COLOR SCHEME WILL BE OF NEUTRAL ACHROMATIC COLOUR FOR SMART AND FUTURISTIC TYPE OF ACCOMODATION

# GROUND FLOOR

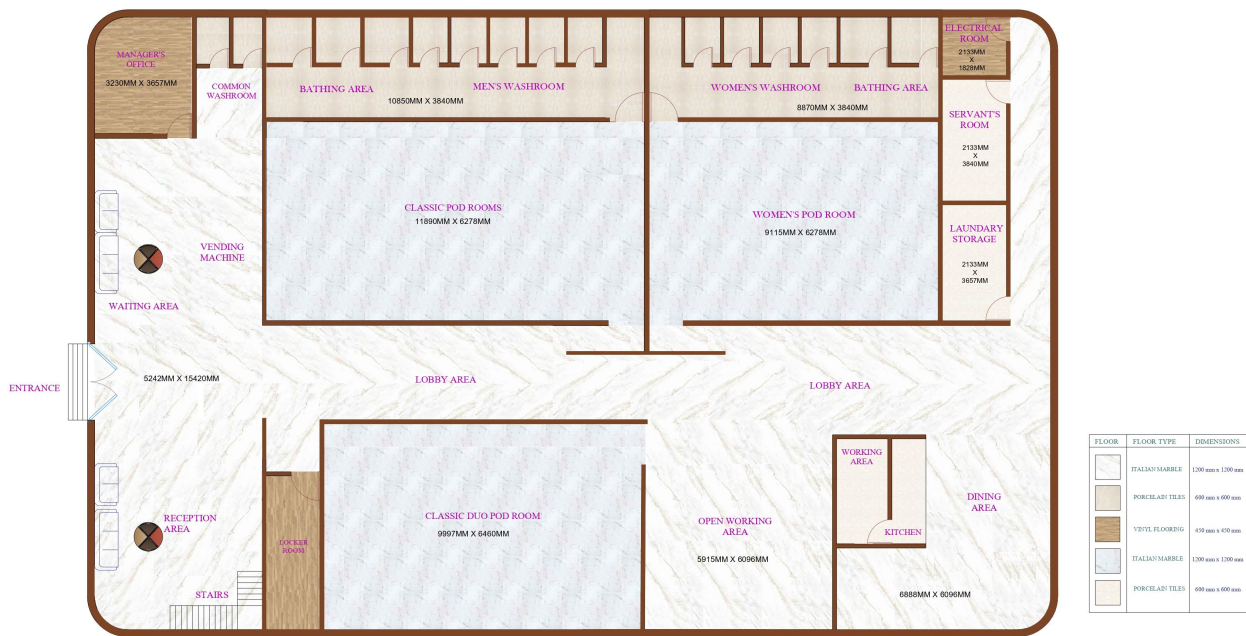


GROUND FLOOR PLAN WITH FURNITURE



COLUMN LAYOUT WITH DIMENSIONS

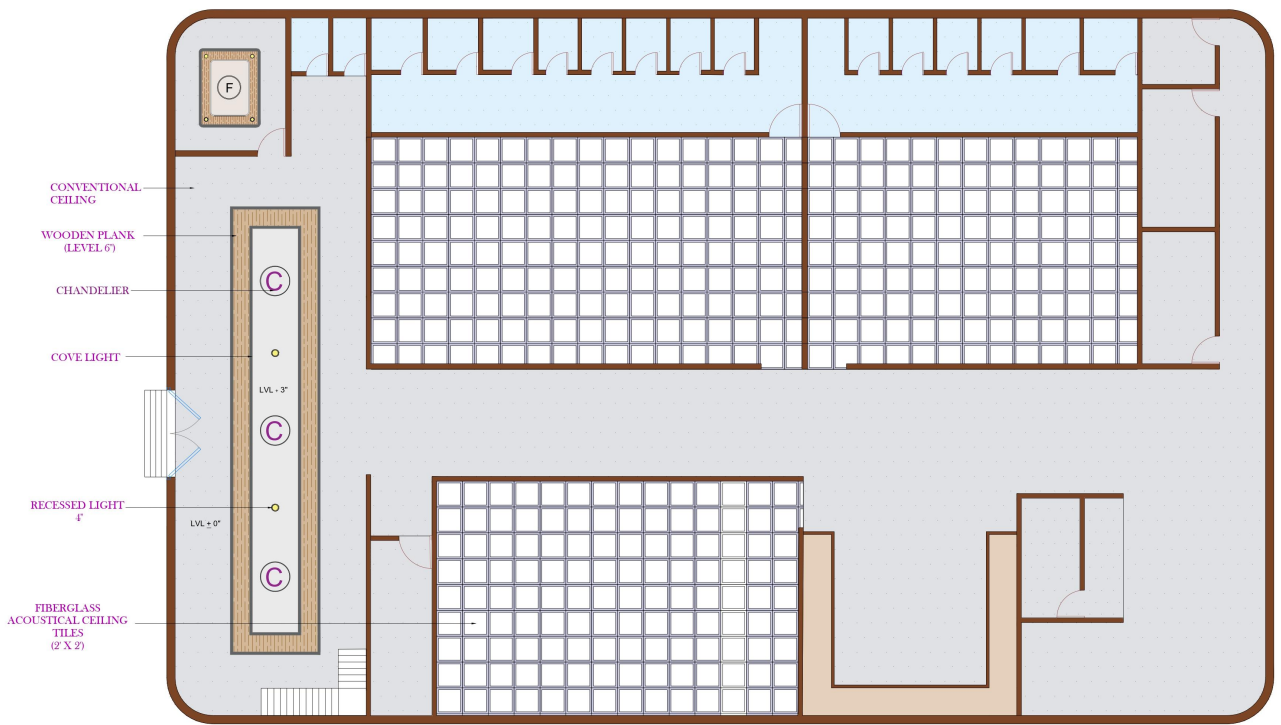




**FLOORING LAYOUT**

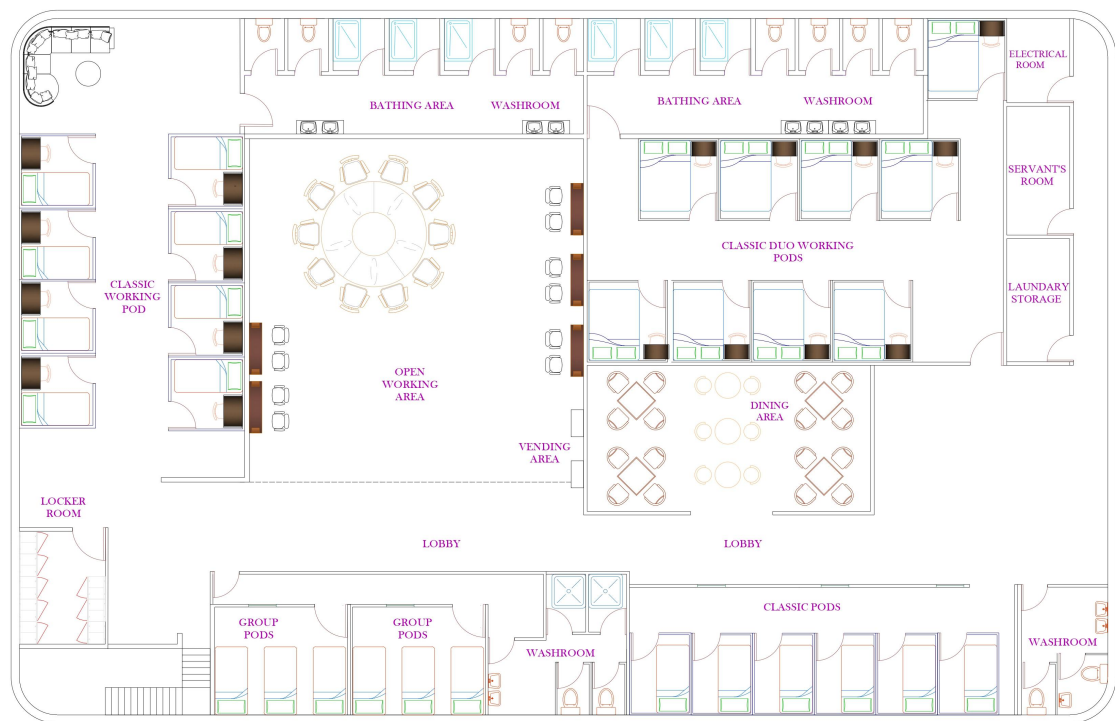


**LIGHTING LAYOUT**

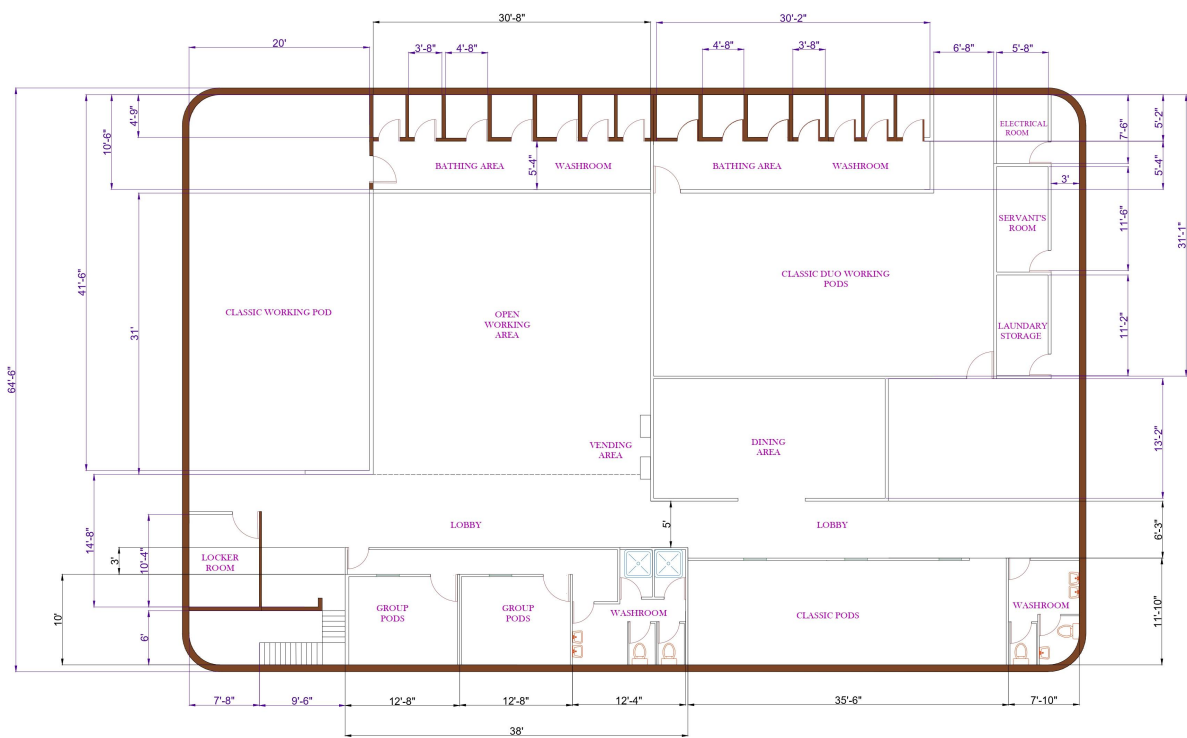


**FALSE CEILING LAYOUT**

FIRST FLOOR



SECOND FLOOR PLAN WITH FURNITURE



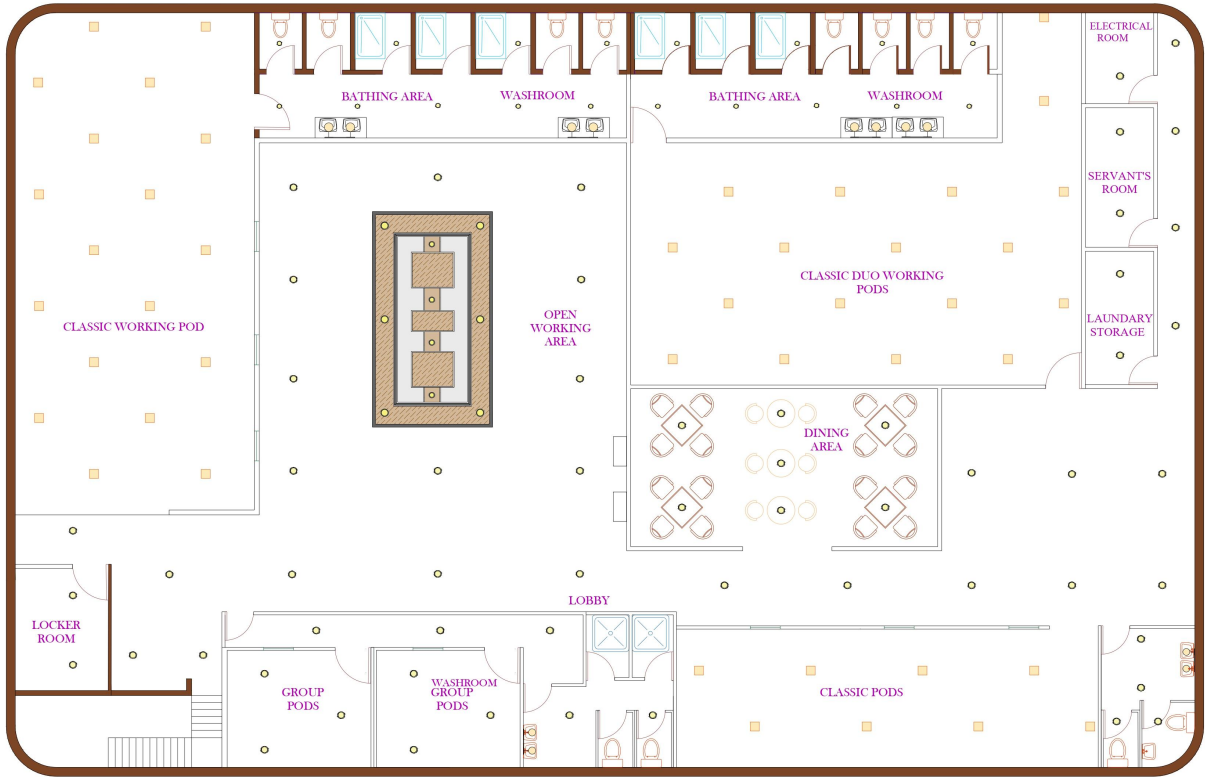
FLOOR PLAN DIMENSIONS



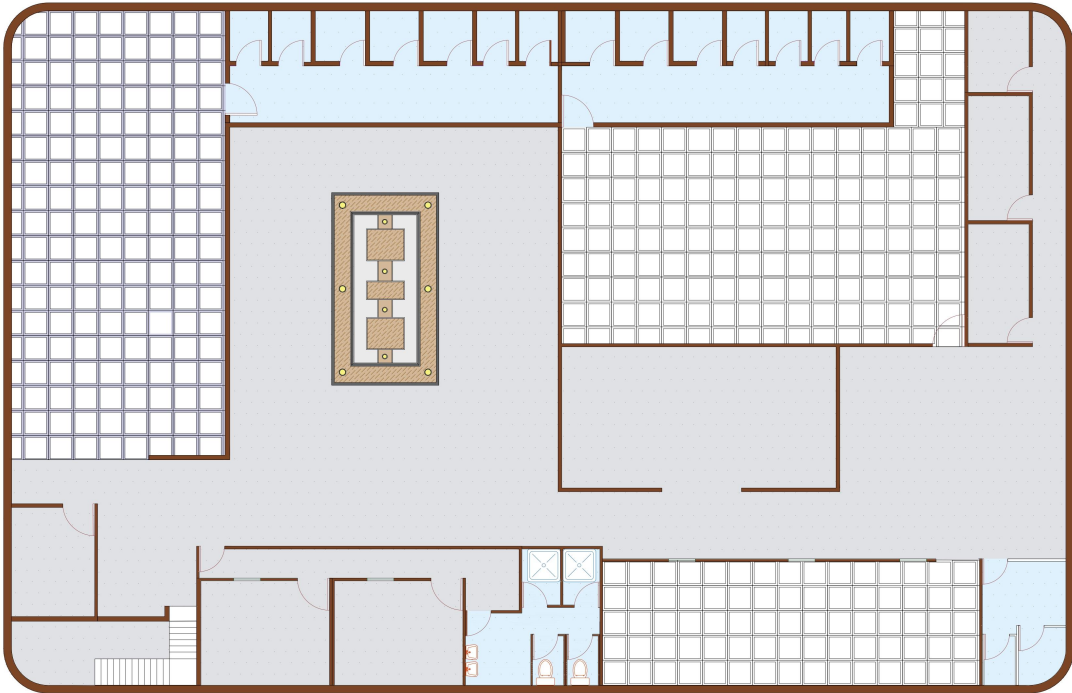


FLOOR	FLOOR TYPE	DIMENSIONS
	ITALIAN MARBLE	1300 mm x 1300 mm
	PORCELADO TELES	600 mm x 600 mm
	VENYL FLOORING	450 mm x 450 mm
	ITALIAN MARBLE	1300 mm x 1300 mm
	PORCELADO TELES	600 mm x 600 mm

**FLOORING LAYOUT**

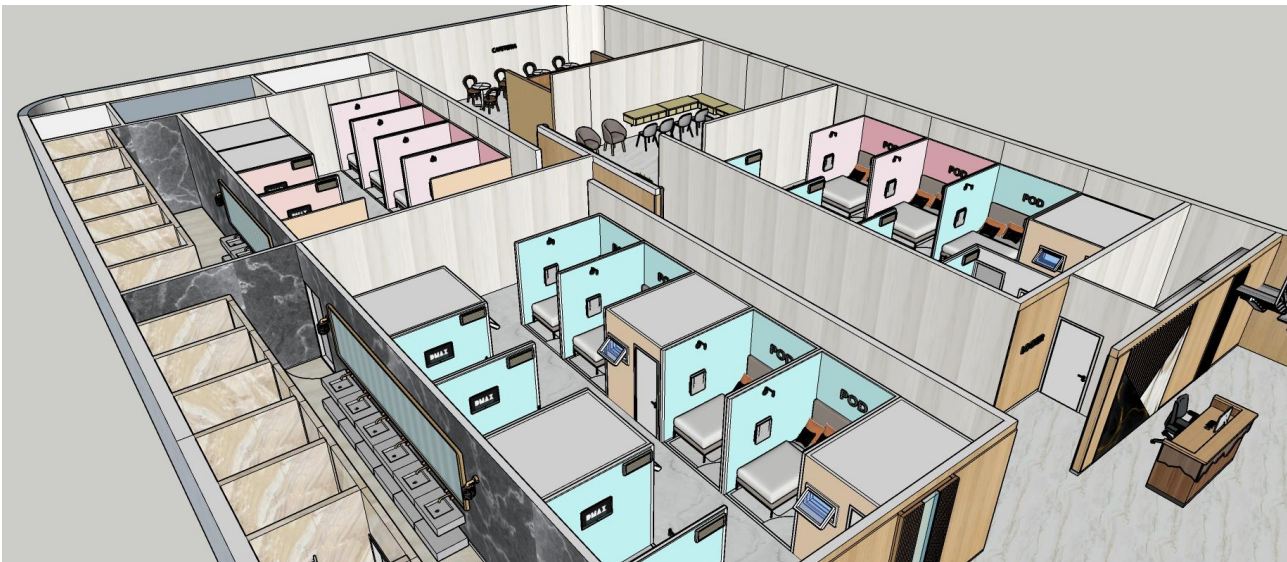


**LIGHTING LAYOUT**



**FALSE CEILING LAYOUT**

**3D - WORK    GROUND FLOOR**





## RECEPTION AREA

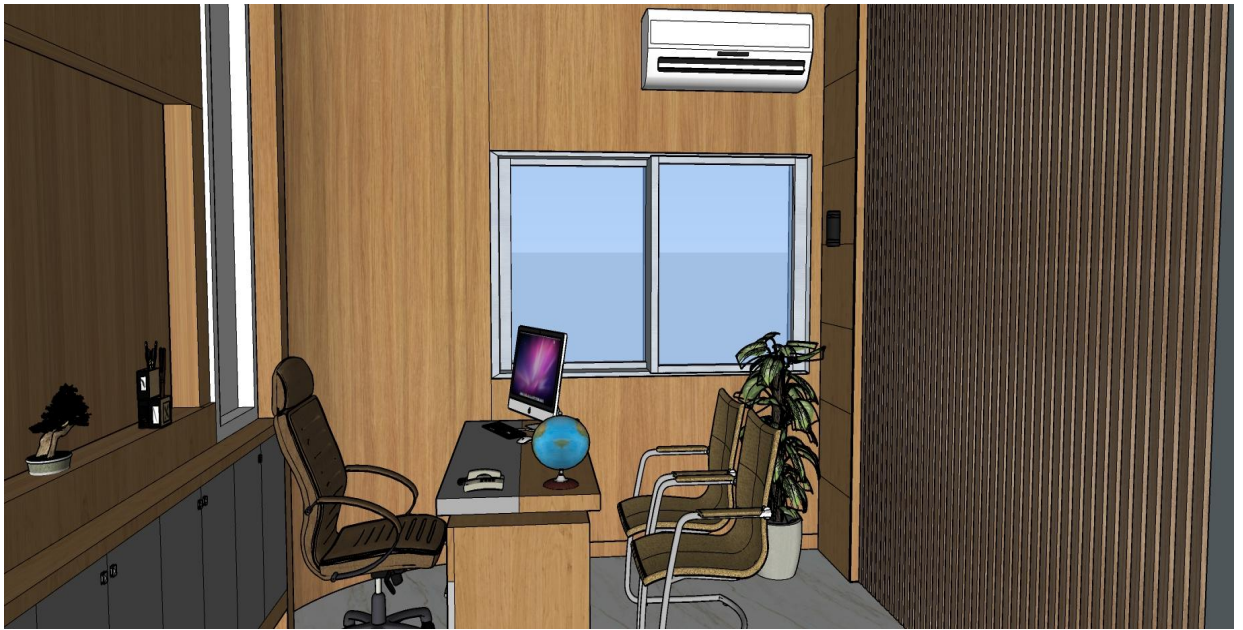






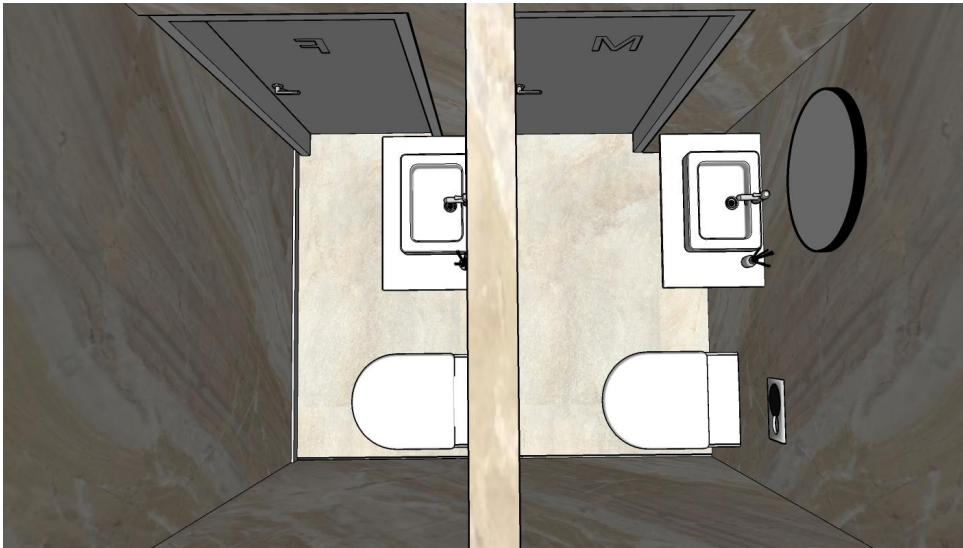
## MANAGER'S OFFICE





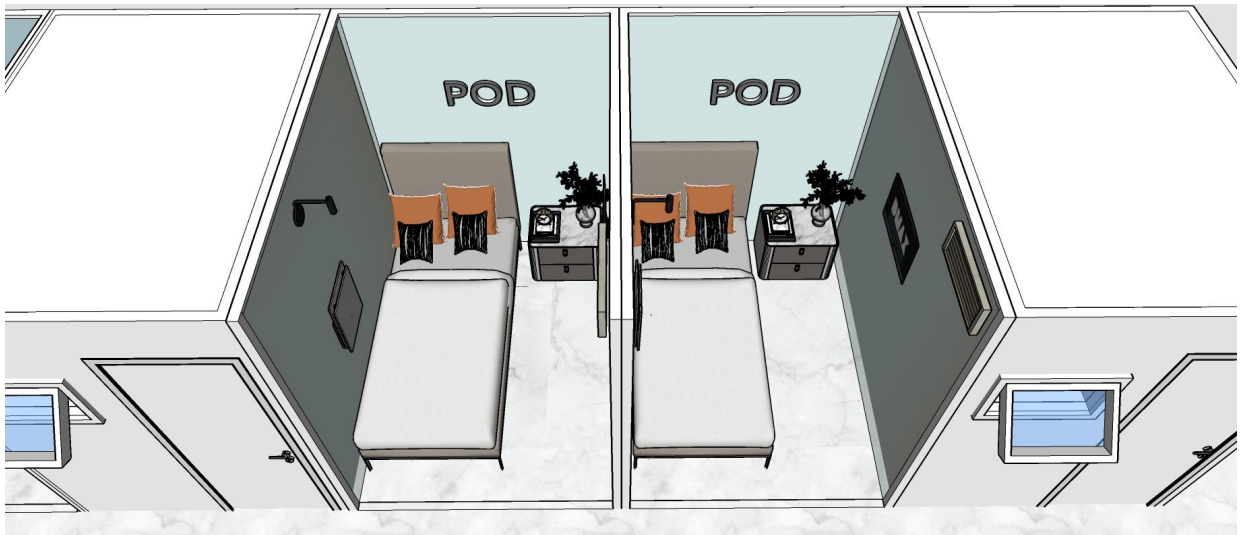


COMMON WASHROOM



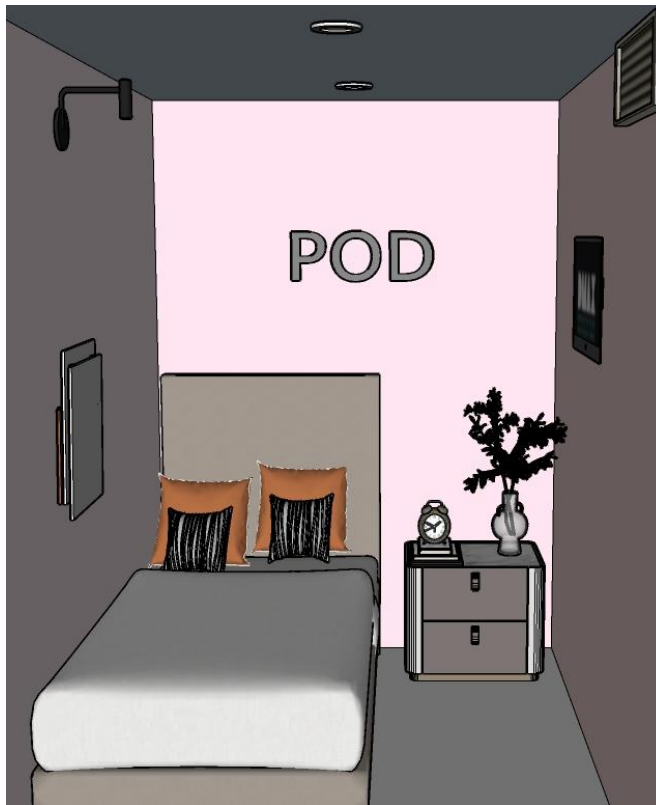


## CLASSIC POD ROOMS

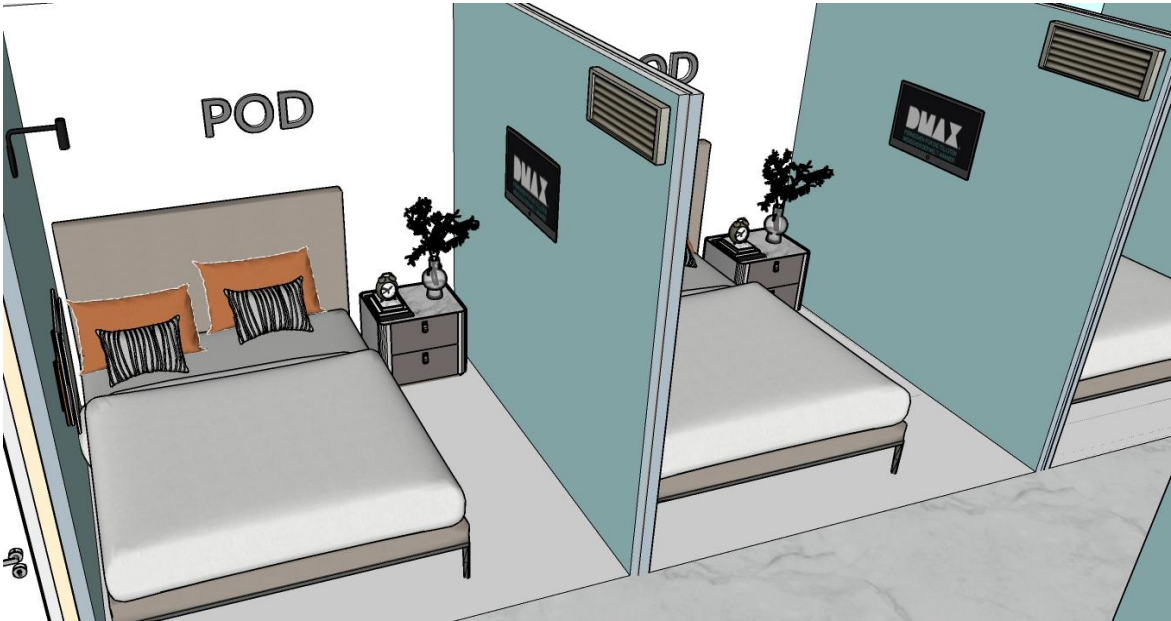




## WOMEN POD ROOM



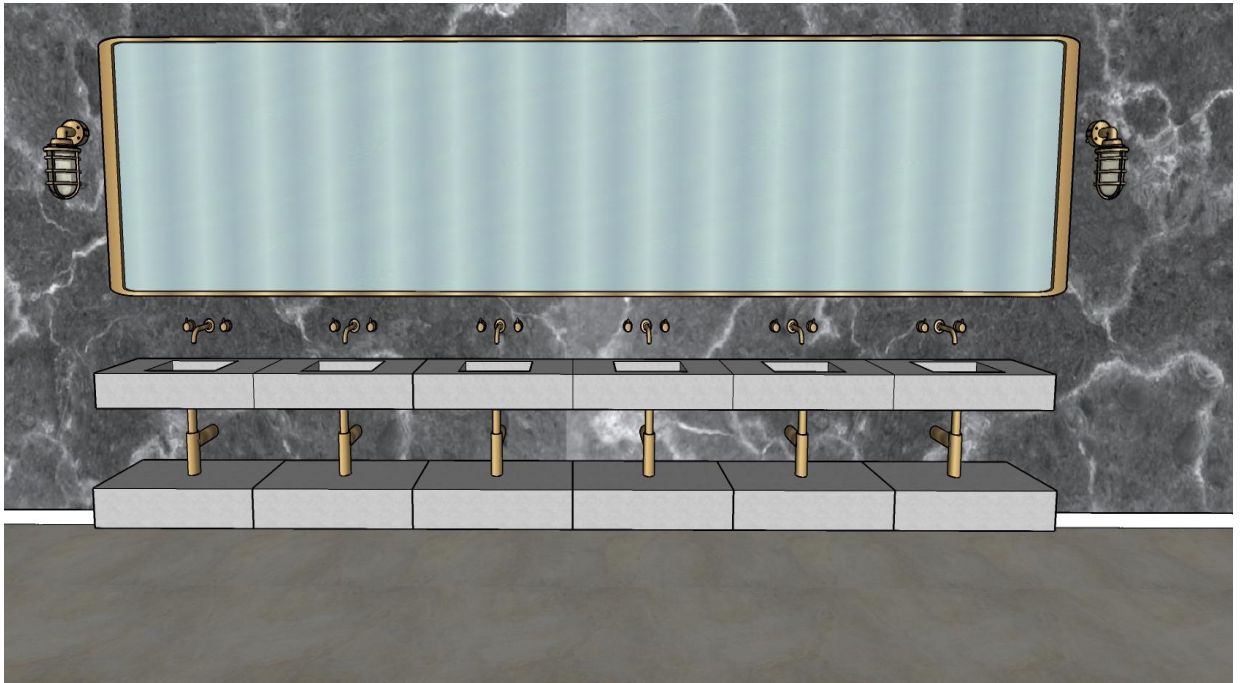
DUO POD ROOM





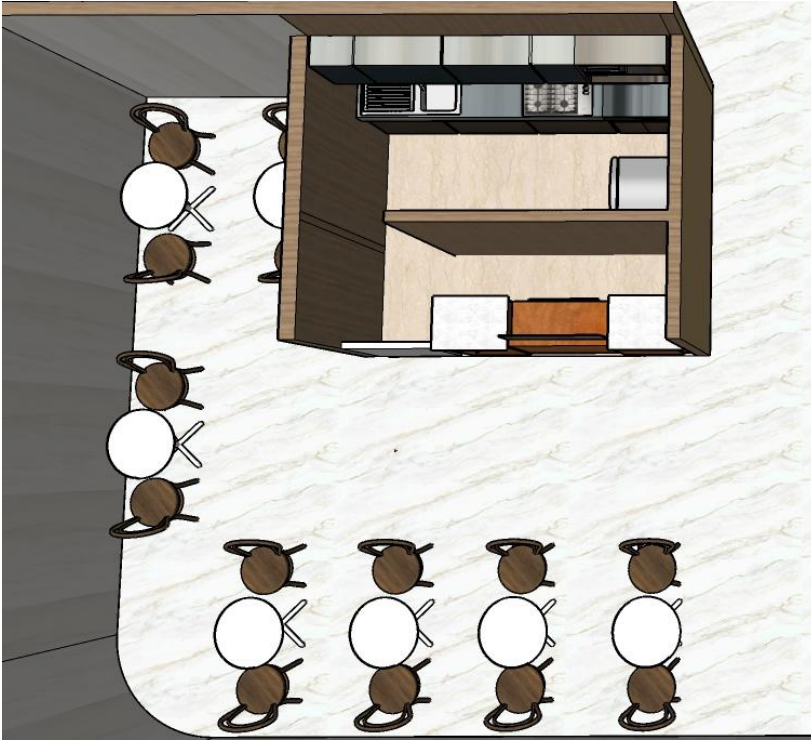
## WASHROOM







## CAFETERIA



## OPEN WORKING AREA

