

**THESIS REPORT ON
“CORPORATE OFFICE,
GURUGRAM HARYANA SECTOR 39”**



**A THESIS SUBMITTED IN PARTIAL FULFILLMENT OF THE REQUIREMENT FOR
THE DEGREE OF:**

BACHELOR OF INTERIOR DESIGN

BY

RASHID AHMAD

(1180107023)

THESIS GUIDE

**PROF. SANGEETA
SHARMA**

SESSION

2021-22

**TO THE
SCHOOL OF ARCHITECTURE AND PLANNING BABU
BANARASI DAS UNIVERSITY LUCKNOW.**

**SCHOOL OF ARCHITECTURE AND PLANNING
BABU BANARASI DAS UNIVERSITY, LUCKNOW (U.P.).**

CERTIFICATE

I hereby recommend that the thesis entitled“**CORPORATE OFFICE,
GURUGRAM HARYANA SECTOR 39** “ under the supervision, is the bonafide
work of the students and can be accepted as partial fulfillment of the requirement
for the degree of Bachelor’s degree in interior design, school of Architecture and
Planning, BBDU, Lucknow.

Prof. Mohit Kumar
Agarwal
Dean of Department

Prof. Sangeeta Sharma
Head of
Department

Recommendation Accepted

Not Accepted

External Examiner

External Examiner

**BABU BANARASI DAS UNIVERSITY,
LUCKNOW (U.P.).**

Certificate of thesis submission for evaluation

1. Name : RASHID AHMED

2. Roll No. : 1180107023

**3. Thesis : CORPORATE OFFICE
Title**

4. Degree for which the thesis is submitted: B I D

5. Faculty of University to which the thesis is submitted: Yes / No

6. Thesis preparation guide was referred to for preparing the thesis. Yes / No

7. Specification regarding thesis format have been closely followed. Yes / No

8. The content of the thesis have been organized based on the guidelines. Yes / No

9. The thesis has been prepared without resorting to plagiarism Yes / No

10. All the sources used have been cited appropriately Yes / No

11. The thesis has not been submitted elsewhere for a degree. Yes / No

12. Submitted 3 hard bound copied plus one CD Yes / No

.....
(Signature(s) of the supervisor)
Name:

.....
(Signature of the Candidate)
Name: RASHID AHMED
Roll No.: 1180107023

ACKNOWLEDGEMENT

I acknowledge my sincere thanks to my guide **PROF. SANGEETA SHARMA** who guided me through active participation in discussions and gave his kind cooperation throughout the process. My sincere thanks to our Thesis coordinator Mr. **Ar. SAURABH SAXENA** for his cooperation and understanding at every stage of the study, which gave my study a new direction and made it more meaningful. I am thankful to our Dean, Prof. Ar. Mohit Aggarwal, for his cooperation and invaluable support. I am also thankful to the persons concerned to my studies for their cooperation and devoting their valuable time for discussing with me.. Above all, thanks to my friends for their sincere help throughout, without which this report would not have been in its present shape. Last but not the least I thank my Parents for their forever support and blessings.

RASHID AHMAD

INDEX

S. No	CONTENT	PAGE No
-------	---------	---------

1	SITE ANALYSIS	1-9
---	---------------	-----

2	LITERATURE STUDY 1	10-18
---	--------------------	-------

3	LITERATURE STUDY 2	19-25
---	--------------------	-------

4	CASESTUDY 1	26-32
---	-------------	-------

5	CASE STUDY 2	33-38
---	--------------	-------

6	CONCEPT AND AREA ANALYSIS	39-50
---	---------------------------	-------

7	SITE PLAN –FLOOR PLAN- SECTION- ELEVATION-ELECTIVE	51-74
---	---	-------

--	--	--

SITE ANALYSIS

UNITECH CYBER PARK

INTRODUCTION OF CORPORATE OFFICE



Unitech Cyber Park

An **office** is a space when an [organization's employs](#) perform [administrative work](#) in order to support and realize objects and [goals](#) of the [organization](#). The word "office" may also denote a position within an organization with specific duties attached to it (see [officer](#), [office-holder](#), [official](#)); the latter is in fact an earlier usage, office as place originally referring to the location of one's duty. When used as an [adjective](#), the term "office" may refer to [business](#)-related tasks.

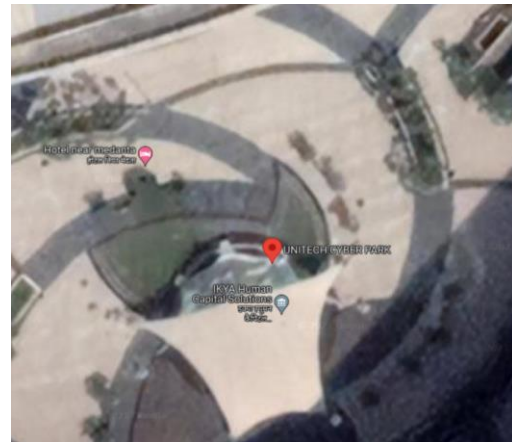
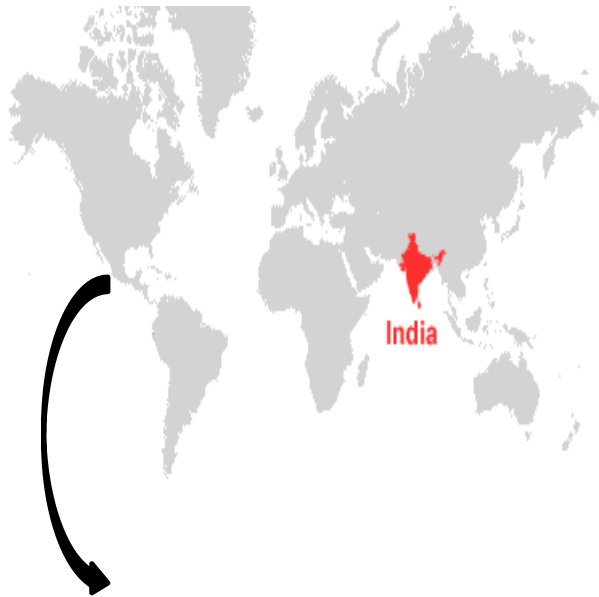
SITE LOCATION

location : Unitech **Cyber Park Sector 39**
Gurugram Haryana

SITE AREA: 1425sqm

LONGITUDE: 79424746E

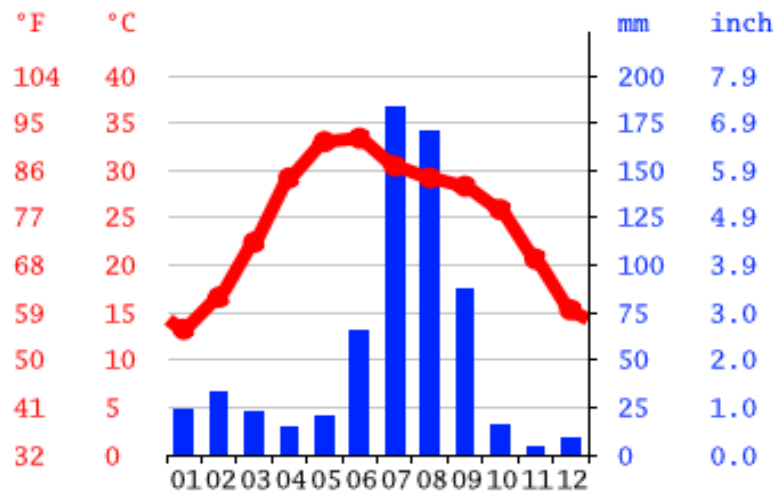
LATITUDE: 2596403N



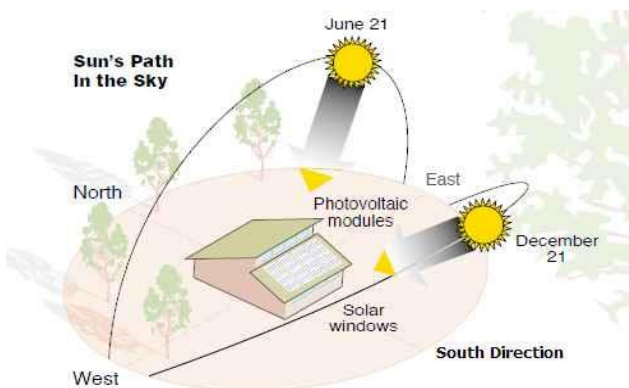
CLIMATE ANALYSIS

Most of the year, the climate of Haryana is of a pronounced continental character, very hot in summer and markedly cold in winter. In between are the pleasant months of spring.

The rainfall in the region is low and erratic except in parts of Karnal, Kurukshetra and Ambala Districts



SUN PATH DIAGRAM

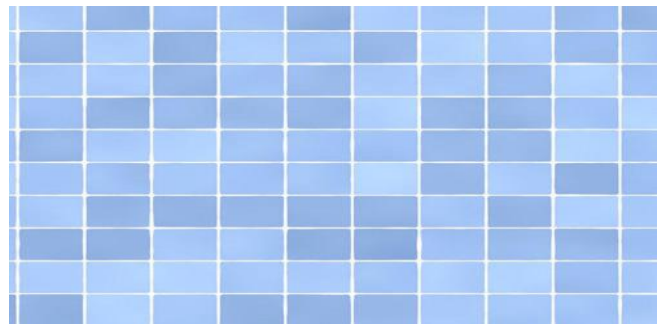


MATERIAL USED IN FLOORING

- ❖ WOODEN TILE
- ❖ VERTIFIED TILE
- ❖ CERAMIC TILE
- ❖ VINAYL TILE



VERTIFIED TILE



VINAYL TILE



CERAMIC TILE



WOODEN TILE

PLAN



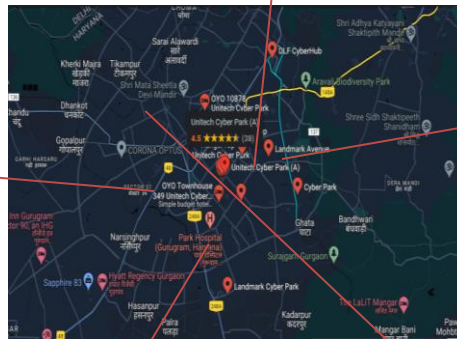
LANDMARK



Unitech cyber park landmark



Oyo townhouse



Worldmark gurgaon



Park Hospital Gurgaon



Sheetla mata mandir

SIITE PLAN



FRAME INTERIOR SPACE REQUIRMENT

S.NO	REQUIREMENT	NO.OF UNITS	OCCUPANCY
1	RECEPTION		1
2	WAITING ROOM	1	20
3	TRAINING ROOM	2	40
4	CONFERENCE ROOM	1	12
5	WORK STATION	2	
6	CANTEEN	1	35
7	PHONEBOOTH	4	4
8	MEETING ROOM	4PERSON-1 6PERSON-1	10
9	DIRECTOR CABIN		1
10	VENDOR SHOP		2
11	RECREATION AREA	1	
12	CRECHE		1
13	INTERVIEW ROOM	1	4
14	LIBRARY	1	35
15	HUDDLE ZONE		2
16	STORE ROOM		2
17	SERVER ROOM		1
18	PARKING	1	500
19	BOARD ROOM	12	120

LITERATURE STUDY –I

STOCKHOLM SWEDEN

INTRODUCTION



SHTML TOWER

This project initiates the transformation of a former harbour area in the south of [Stockholm](#) into the new ecological district of Hammarby Sjöstad.

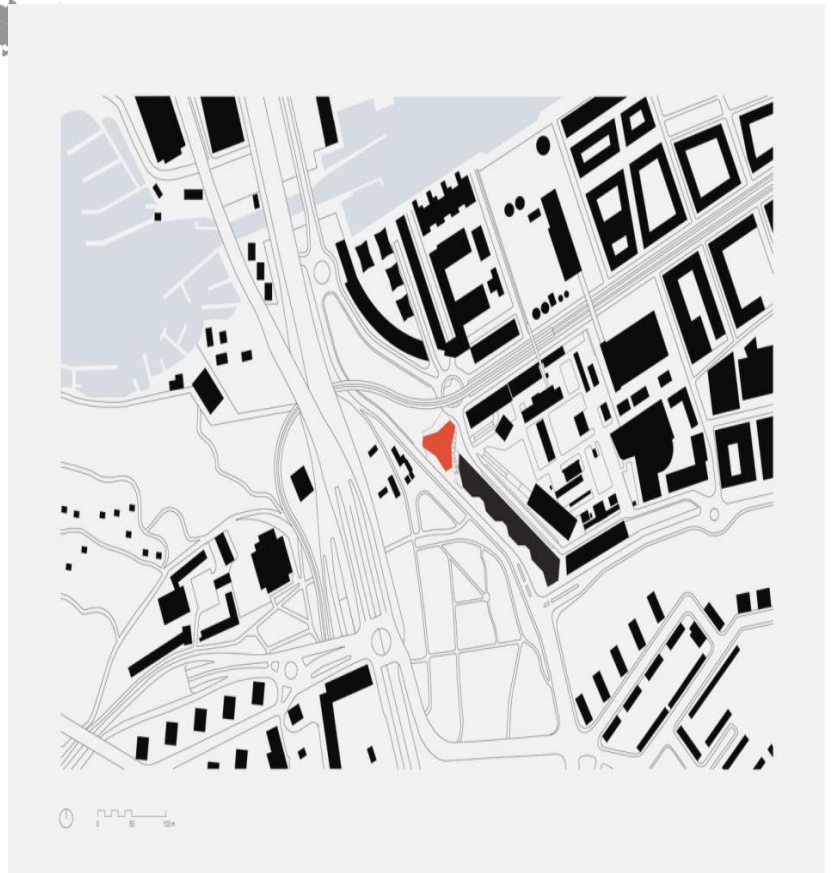
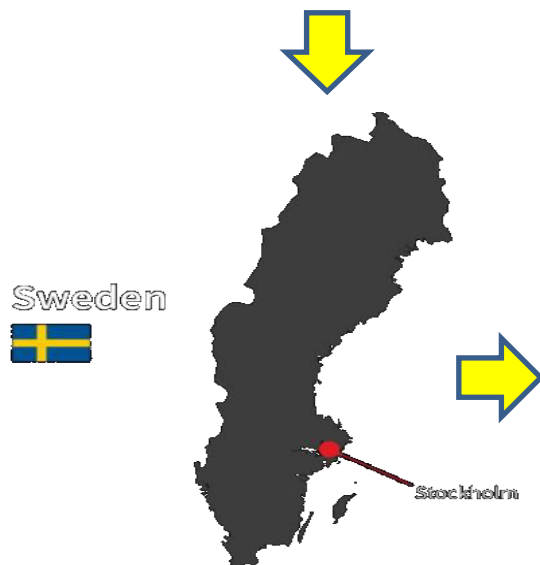
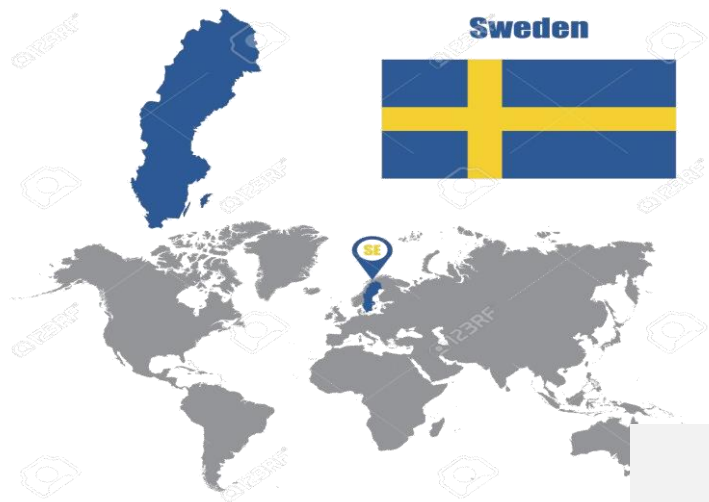
The emblematic geometry of the tower – a conical star that gradually extends its perimeter as it rises into the sky – minimises its footprint on this limited site while providing flexible office space that benefits from long-distance views and an abundance of daylight. On the two different ground levels the high rise houses commercial units while a restaurant and sky bar on the top level offer spectacular views of the city.

Situated along the western edge of the redevelopment area, south of the bridges over Hammarby canal and beside a major road into [Stockholm](#), the ensemble comprises a tower and a low-rise building with heights of 100 and 25 metres respectively. Together, these two distinct volumes reconcile the divergent scales and conditions of the context, at the interface between the wide arterial road and a narrow park to the west and, to the east, the new city district that lies some 16 metres lower.

LOCATION:

STOCKHOLM, SWEDEN

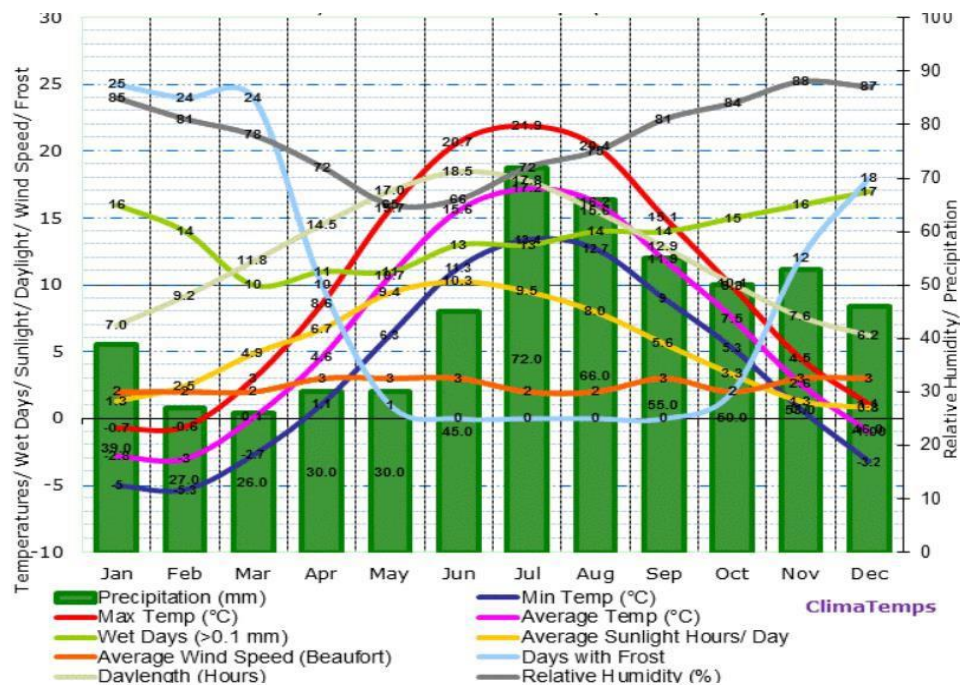
Site area- (35,200 sq mtr).



SITE MAP

CLIMATE

Winter and summer temperature differences in Sweden are extreme, but generally the country enjoys a temperate climate, thanks to the Gulf Stream. Above the Arctic Circle, winter is severe with temperatures going below -30°C , while summer Temperatures here, and in the rest of the country, regularly hit $+20^{\circ}\text{C}$.



SITE DESCRIPTION

Architects: [Sauerbruch Hutton](#) Area: [35200](#) m²

Year: [2020](#)

Photographs: [Anders Bobert](#)

Manufacturers: [Daloc](#), [EGE](#), [Höganäs](#), [Rockfon](#)

Between the two buildings, a sweeping flight of steps extends the local pedestrian network to provide an additional route to and from the nearby underground railway station and the new housing area by the water.

The façade of the tower presents a striking chromotope, which gives identity to the new district and provides a landmark for orientation, in keeping with the building's name: [Stockholm](#) One. This project is LEED Platinum certified.



MATERIALS

In Sweden, common constructions for exterior walls in multi-dwelling buildings which should be used for further studies are insulated wood infill walls with clay brick façades, lightweight concrete walls with rendered façades and concrete sandwich walls.

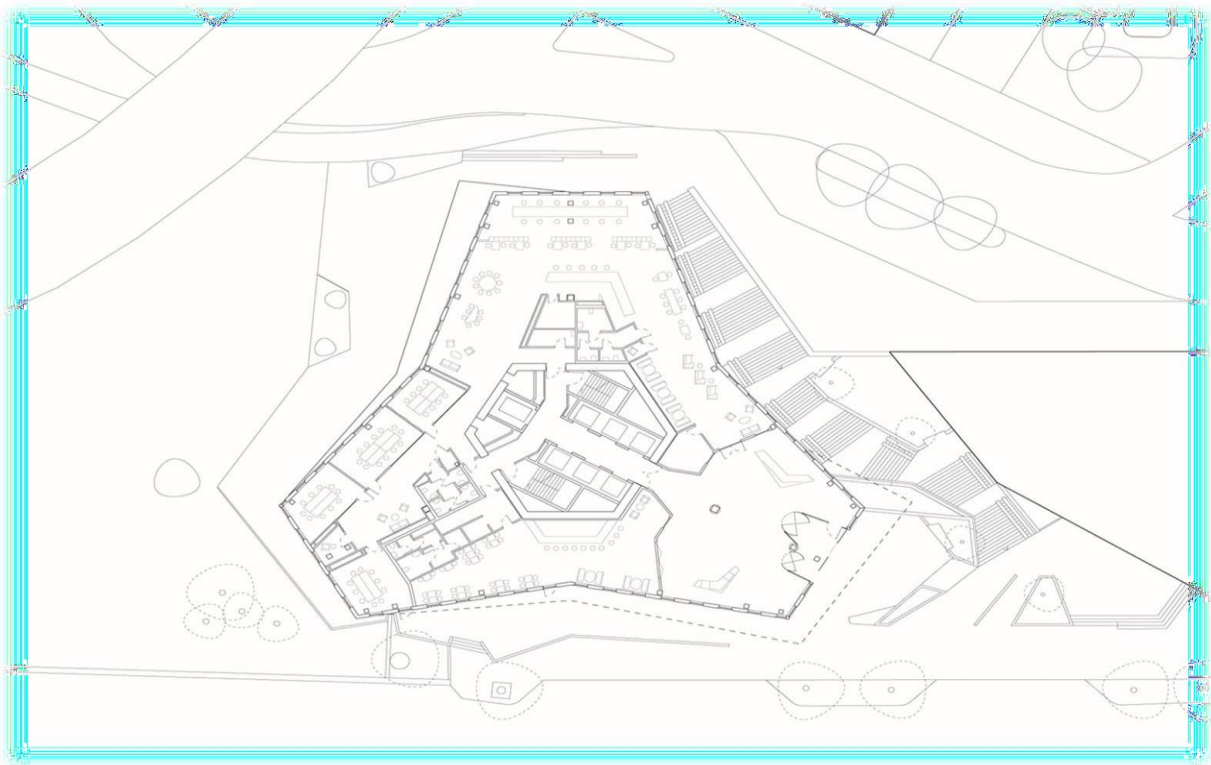
INTERIORS VIEWS



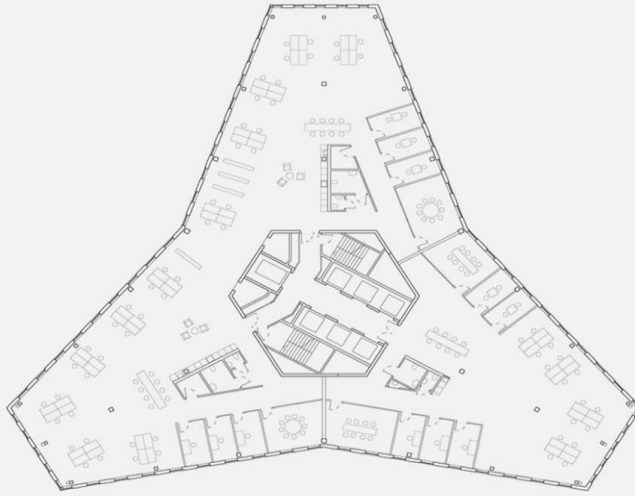
PLAN,ELEVATION AND SITE SECTION



0-2 LVL FLOOR PLAN



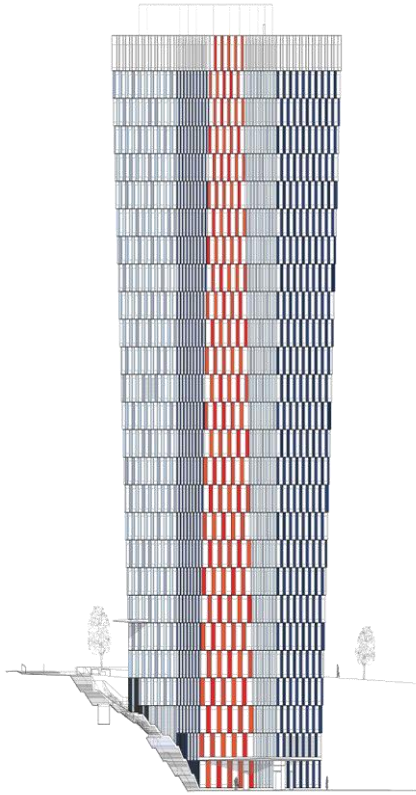
3-6 LVL FLOOR PLAN



PLAN 7-23 LVL FLOOR

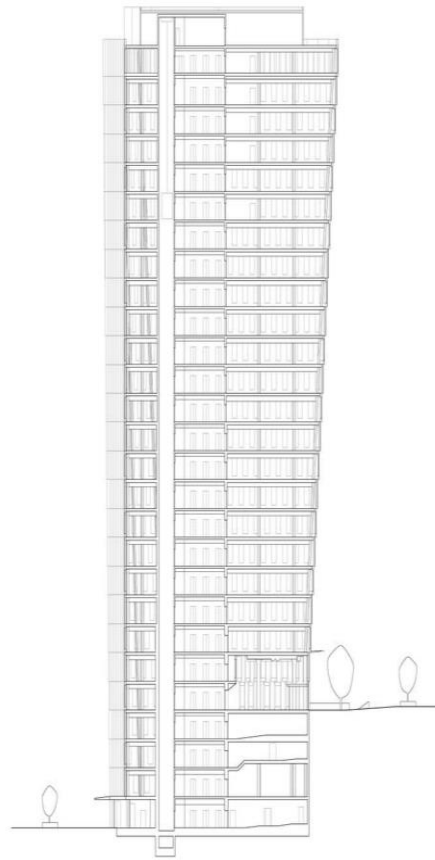


24-28 LVL FLOOR PLAN

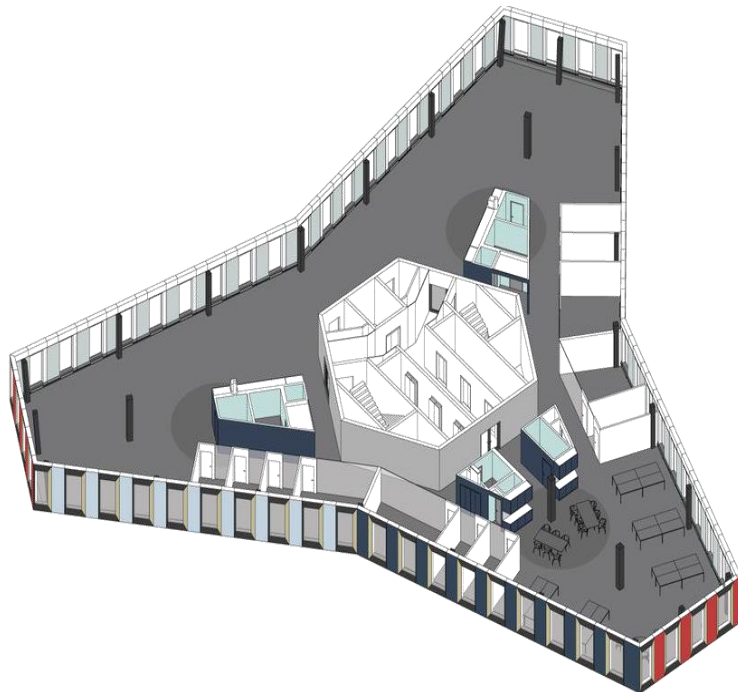


ISOMETRIC MODEL
NORTH ELEVATION

!
SO
OFP
MFL
EIA
TCN
RE
!
C



FRONT SECTION



LITERATURE STUDY –II

BEIJING,CHINA

INTRODUCTION



Erected in the early 1970s, before China opened its economy, the building was designed to house manufacturing activities for metallurgy spare parts. As with most factories of the time, the utilitarian rectilinear structure is laid with red bricks in a common bond, well-fenestrated with evenly spaced windows. Plenty of steel-concrete columns, truss, and beams throughout the interior remain to this day to support the building. Its last occupant, a local architecture company, moved into the factory 20 years ago and added floor areas by extra mezzanine levels and a second story. Referencing historical architectural elements, the last designer blew up a circular frame traditionally seen in Chinese courtyards, asserting a cultural character right across the lobby.

The new headquarter will not only be an office. Partners of BetterLife will visit to foster long-lasting business relationships, and employees will be here to explore the potentials of a dynamic business environment.

LOCATION: BEIJING, CHINA



SITE DISCRIPTION

BEIJING,

[CHINA](#)

Architects:

[TEMP](#)

Area:

[2600](#) m²

Year: [2020](#)

Photographs: [Weiqi Jin](#)

Design Team: Francesca Tongxin Guan, Tony Cong Zhou

The Client : Better Life Group

City :Beijing Country: China

CLIMATE

In Beijing, the capital of China, located in the northeast of the country, 140 km (85 mi) away from the Bohai Sea Coast, the climate is continental, with cold but sunny winters, and hot, sultry, and rainy summers. ... Although the **winter is a dry season, sometimes it can snow.**

Beijing - Average temperatures

Month	Jan	Feb	Mar	Apr	May	Jun	Jul	Aug	Sep	Oct	Nov	Dec	Year
Min (°C)	-8	-6	0	8	14	19	22	21	15	8	0	-6	7.3
Max (°C)	2	5	12	20	26	30	31	30	26	19	10	4	17.9
Min (°F)	17	22	33	46	56	66	72	69	59	46	32	22	45.1
Max (°F)	35	41	53	69	79	86	88	85	78	66	50	39	64.2

Precipitation amounts to 570 mm (23 inches) per year: the rains are not abundant, but they are concentrated in the summer months. Here is the average precipitation.

Beijing - Average precipitation

Month	Jan	Feb	Mar	Apr	May	Jun	Jul	Aug	Sep	Oct	Nov	Dec	Year
Prec.(mm)	3	6	10	25	30	70	175	180	50	20	6	2	580
Prec.(in)	0.1	0.2	0.4	1	1.2	2.8	6.9	7.1	2	0.8	0.2	0.1	22.8
Days	2	3	4	5	6	9	14	12	7	5	3	2	72

SOIL TYPE

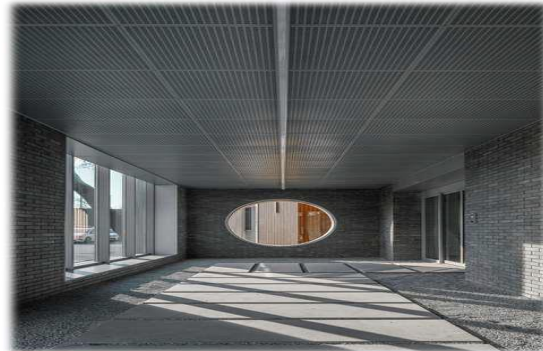
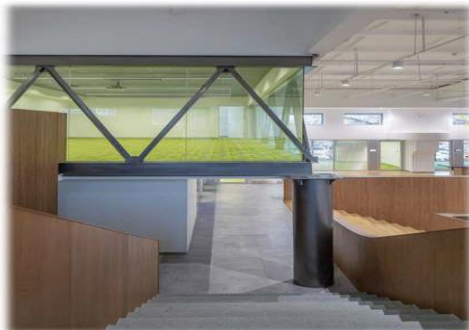
The paddy soil is a unique type of cultivated soil, formed over a long period of time under the specific conditions of intensive rice cultivation. Along the coast of North China are belts of saline and alkaline soil.

MATERIALS

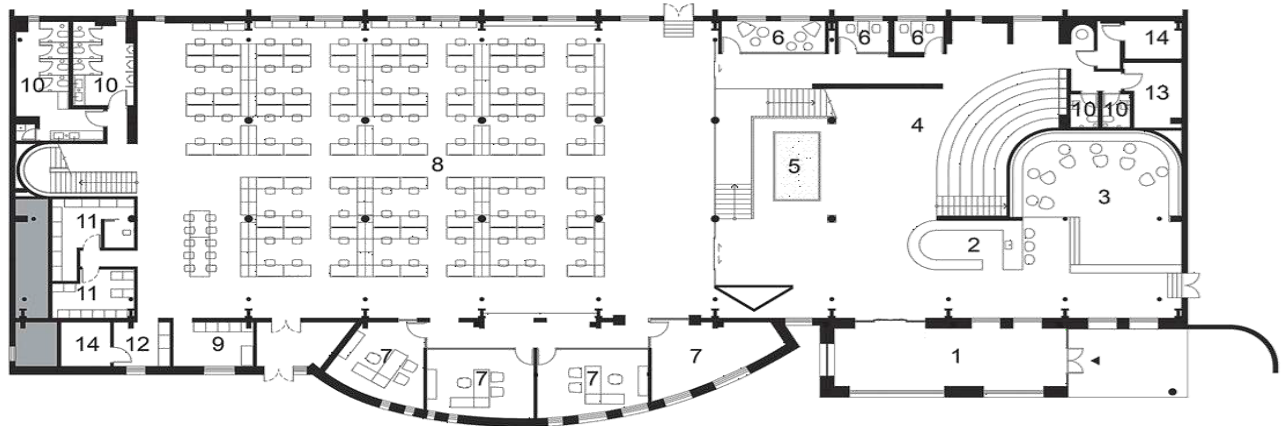
Concrete, sand, gravel, brick, and cement were the main **materials** used. Spatially, **construction** activities expanded country. from east **China** into the central part of the



INTERIORS VIEWS



PLAN

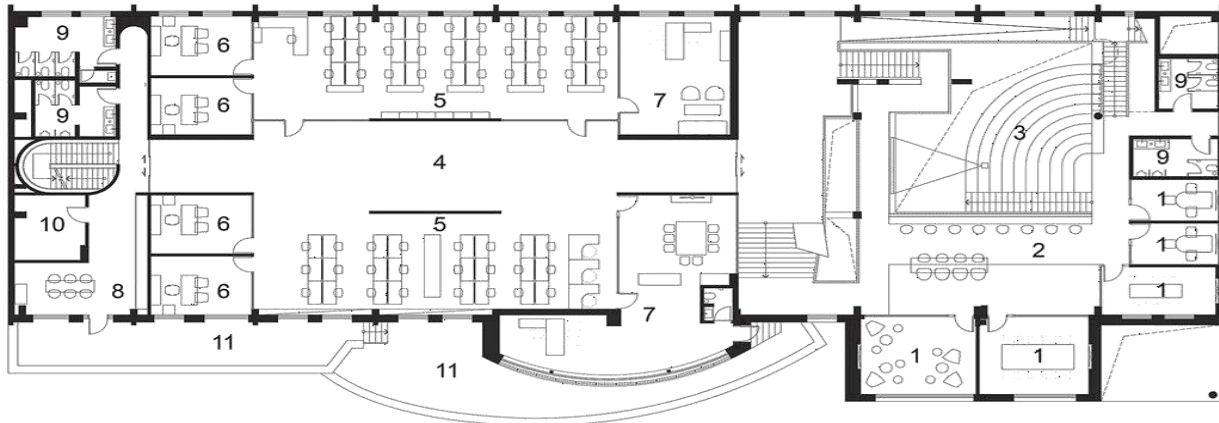


0 2 4 10m

LEVEL 1

- | | | |
|-------------------|---------------------|------------------|
| 1 Entrance | 6 Phone Booth | 11 Changing Room |
| 2 Front Desk | 7 Manager's Office | 12 Printing Room |
| 3 Cafeteria | 8 Open Floor Office | 13 Storage |
| 4 Stepped Seating | 9 Pantry | 14 Machine Room |
| 5 Reflecting Pool | 10 Toilet | |

temp.

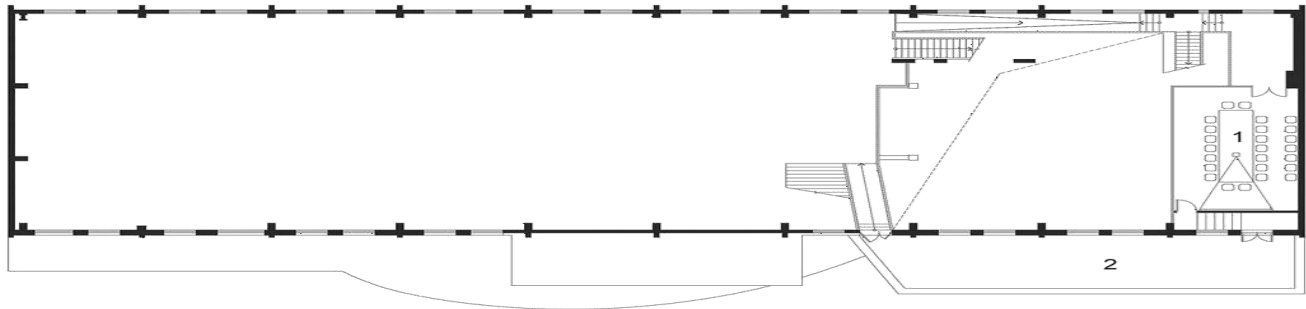


0 2 4 10m

LEVEL 2

- | | | |
|---------------------|--------------------|------------|
| 1 Meeting Room | 6 Manager's Office | 11 Balcony |
| 2 Co-working Space | 7 Executive Office | |
| 3 Stepped Seating | 8 Pantry | |
| 4 Gallery | 9 Toilet | |
| 5 Open Floor Office | 10 Storage | |

temp.

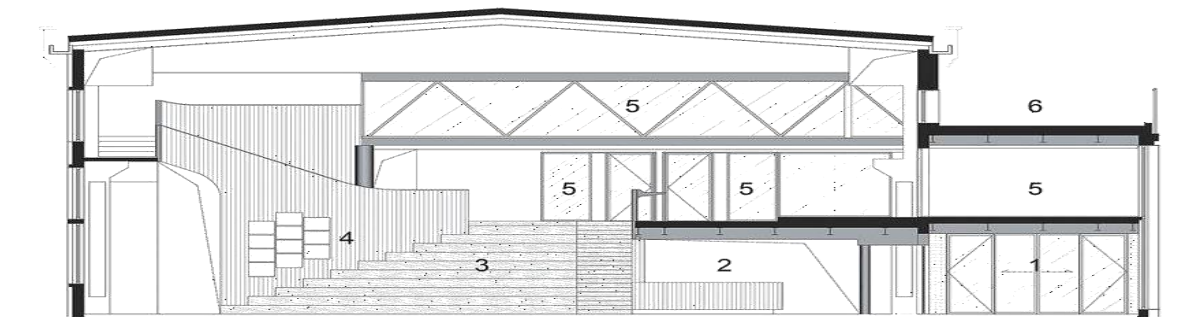


0 2 4 10m

LEVEL 3

1 Meeting Room
2 Balcony

temp.



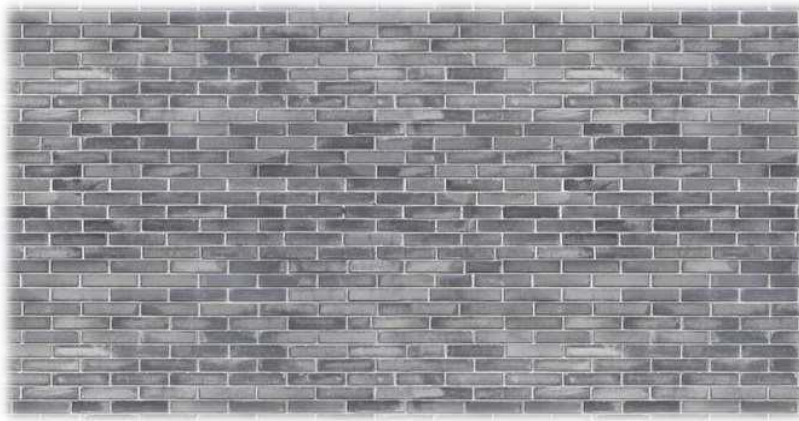
0 1 2 5m

1 Entrance
2 Front Desk
3 Stepped Seating
4 Book Shelf
5 Meeting Room
6 Balcony

temp.

MATERIAL ANALYSIS

To adapt, the entrance is refurbished with a reflective stainless-steel box and column hang, under which a curvilinear wall band of grey bricks and step stones roll out beyond the building's original boundaries to draw attraction.



Reflective stainless steel



CASE STUDY 1

DLF INFINITY TOWERS

GURGAON

INTRODUCTION

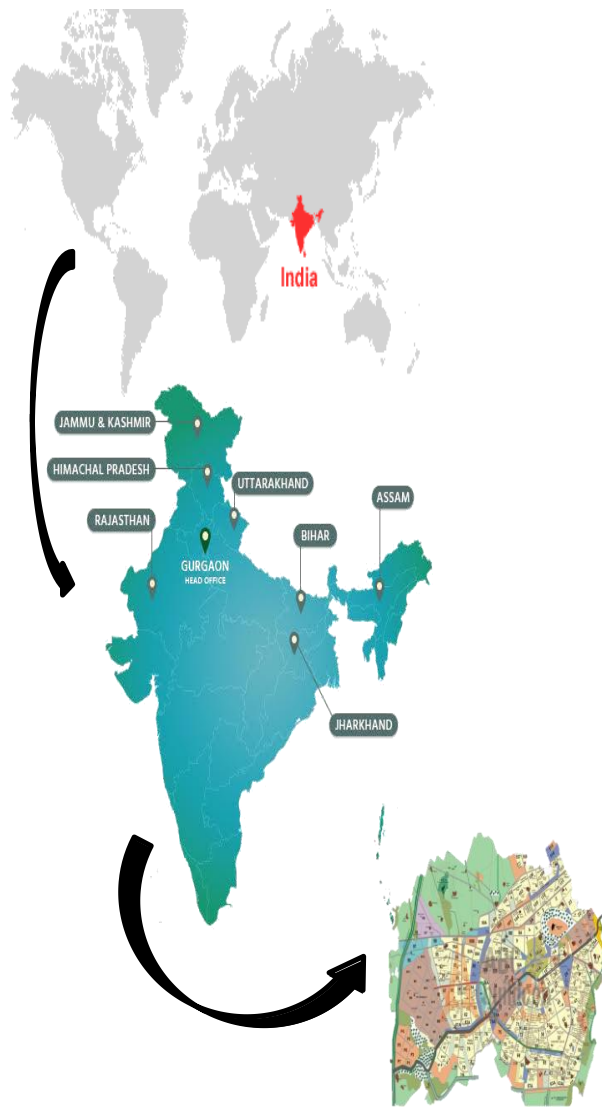


DLF INFINITY TOWER

The majesty of DLF Infinity Towers is spread over three interconnected towers; A (G+9 Floors), B (G+8 Floors) and C (G+12 Floors) in DLF Cyber City (Gurgaon). Each tower has at least 8 floors and cumulatively spreads across 12,00,000 sq. ft. of space. The scalability of this flexible space ranges from 38,000 sq. ft. right up to 52,000 sq. ft. This meticulous kind of construction has purposefully given way to contiguous space of about 1,35,000 sq. ft. on every single floor. The smartness of design can only be matched by its chic yet professional look on the outside.

DLF Infinity Tower An is one of the unmistakable IT/ITeS structures in DLF Cyber City, Gurgaon. It is a negligible five-minute stroll from DLF Rapid Metro Station Phase II and IndusInd Bank Metro Station and has great access by means of the continuous 16-path interstate associating MG Road, Golf Course Road, NH-8 and Airport.

LOCATION - GURGAON



CLIMATE

The prevailing climate in Gurgaon is known as a local steppe climate. There is little rainfall throughout the year. This climate is considered to be BSh according to the Köppen-Geiger climate classification. The temperature here averages 24.9 °C 76.8 °F. Precipitation here is about 670 mm 26.4 inch per year .

	January	February	March	April	May	June	July	August	September	October	November	December
Avg. Temperature °C (°F)	13.5 °C (56.4) °F	17 °C (62.6) °F	22.8 °C (73) °F	29.4 °C (85) °F	33.1 °C (91.6) °F	33.4 °C (92.1) °F	30.2 °C (86.4) °F	29 °C (84.2) °F	28.2 °C (82.7) °F	25.8 °C (78.4) °F	20.8 °C (69.4) °F	15.5 °C (59.9) °F
Min. Temperature °C (°F)	7.6 °C (45.6) °F	10.5 °C (50.9) °F	15.3 °C (59.6) °F	21.2 °C (70.1) °F	25.6 °C (78.1) °F	28 °C (82.4) °F	26.9 °C (80.4) °F	26 °C (78.8) °F	24.1 °C (75.4) °F	19.3 °C (66.8) °F	14.3 °C (57.7) °F	9.2 °C (48.6) °F
Max. Temperature °C (°F)	20.1 °C (68.2) °F	23.8 °C (74.8) °F	30.2 °C (86.3) °F	37 °C (98.6) °F	40 °C (104) °F	38.7 °C (101.6) °F	34.1 °C (93.4) °F	32.6 °C (90.7) °F	32.7 °C (90.9) °F	32.4 °C (90.4) °F	27.8 °C (82) °F	22.4 °C (72.3) °F
Precipitation / Rainfall mm (in)	23 (0.9)	31 (1.2)	20 (0.8)	13 (0.5)	19 (0.7)	71 (2.8)	197 (7.8)	180 (7.1)	90 (3.5)	14 (0.6)	5 (0.2)	7 (0.3)
Humidity (%)	66%	59%	45%	27%	30%	45%	69%	75%	69%	52%	52%	60%
Rainy days (d)	2	3	2	2	4	7	14	15	8	2	1	1

The precipitation varies 192 mm | 8 inch between the driest month and the wettest month. The variation in temperatures throughout the year is 19.8 °C | 67.7 °F.

KEY HIGHLIGHTS

Power Supply: • High Quality & uninterrupted power supply to DLF Infinity Tower from Gas based 100 MW captive power plant located at DLF Building 5 & 10.

Security at DLF Infinity Tower / DLF Cyber City: •

Peripheral / Ring Security for Cyber City - by CISF - Contract signed

•Location Connected thru 16 lane express way - NH

8 as well as MG Road Readily accessible from both South & Central Delhi India's Integrated Business District - 125 acres Cyber City In close vicinity to many residential catchment areas

•Metro Connectivity DMRC Metro line connected to entire Delhi Cyber City's own Rapid Metro line with 5 dedicated stations To be operational in Q2, 2013

•Infrastructure 100 MW Captive Power Plant operational - offers 40% energy savings Dedicated Fire Station for Cyber City Buildings – Operational 90 mtrs high Sky lift for emergencies - First & Only 1 in India – Operational 16 lane Toll Free Road - from NH 8 to Sec 56 - Works commenced Advanced BMS of Siemens in all DLF buildings – Installed Skywalks connecting Cyber City buildings to metro stations - by Q1, 2015 Retail Hub designed by International Architect - by Q1, 2013

Access to Location

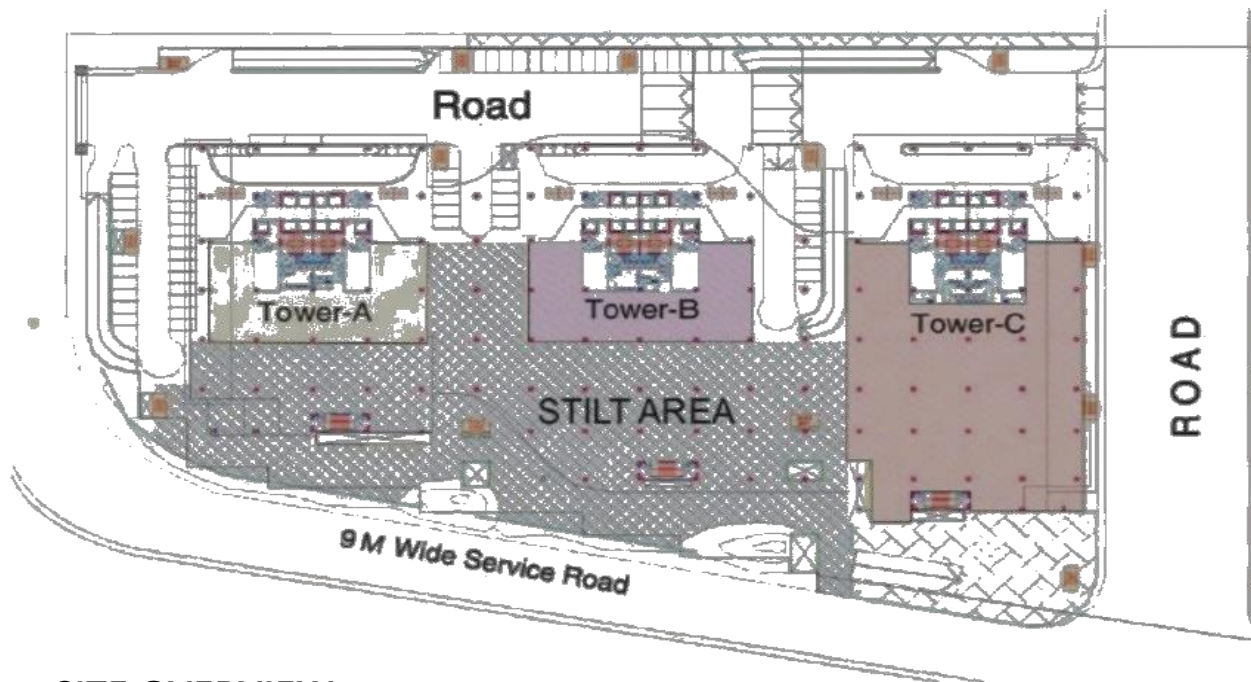
- Right in the midst of DLF Cybercity Park
- 350m to 500m away from IndusInd Bank Rapid Metro Station
- Distance from IGI Airport: 14.1 kms
- Distance from Delhi-Jaipur Highway: 1.8 kms
- Distance from Ambience Mall, Gurgaon: 4.1 kms

INTERIOR

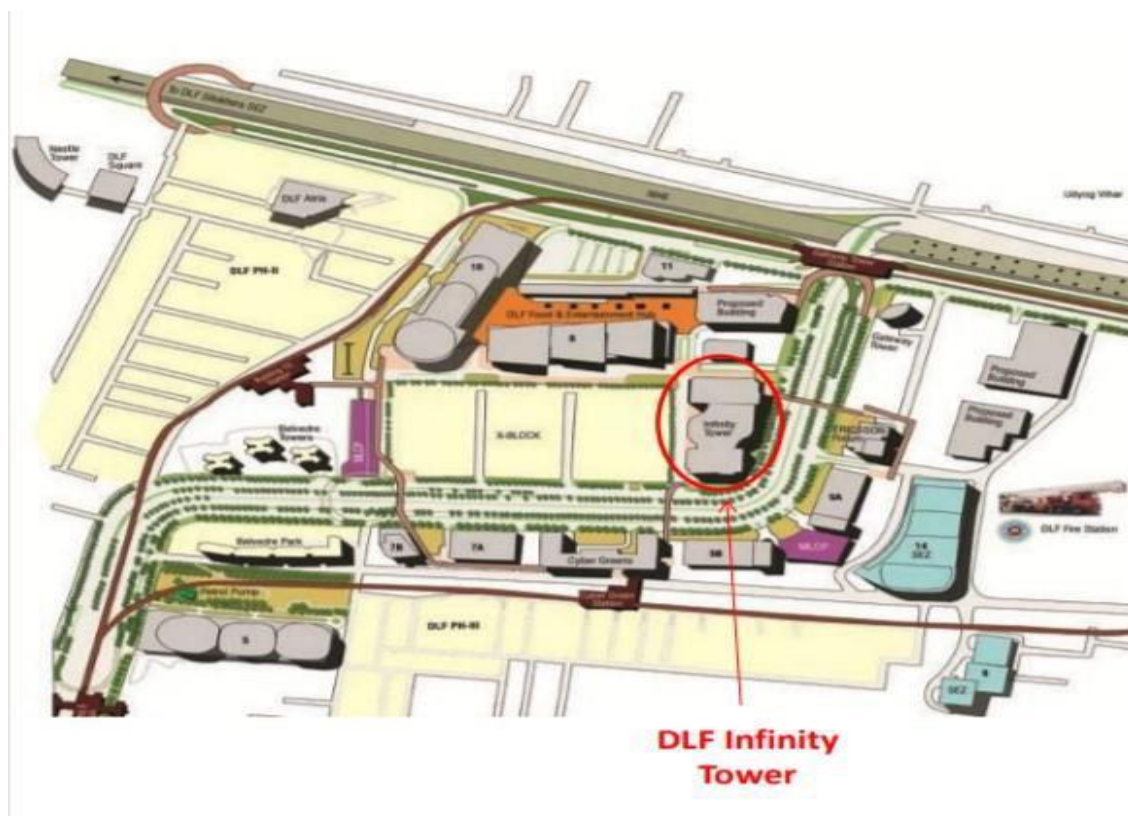


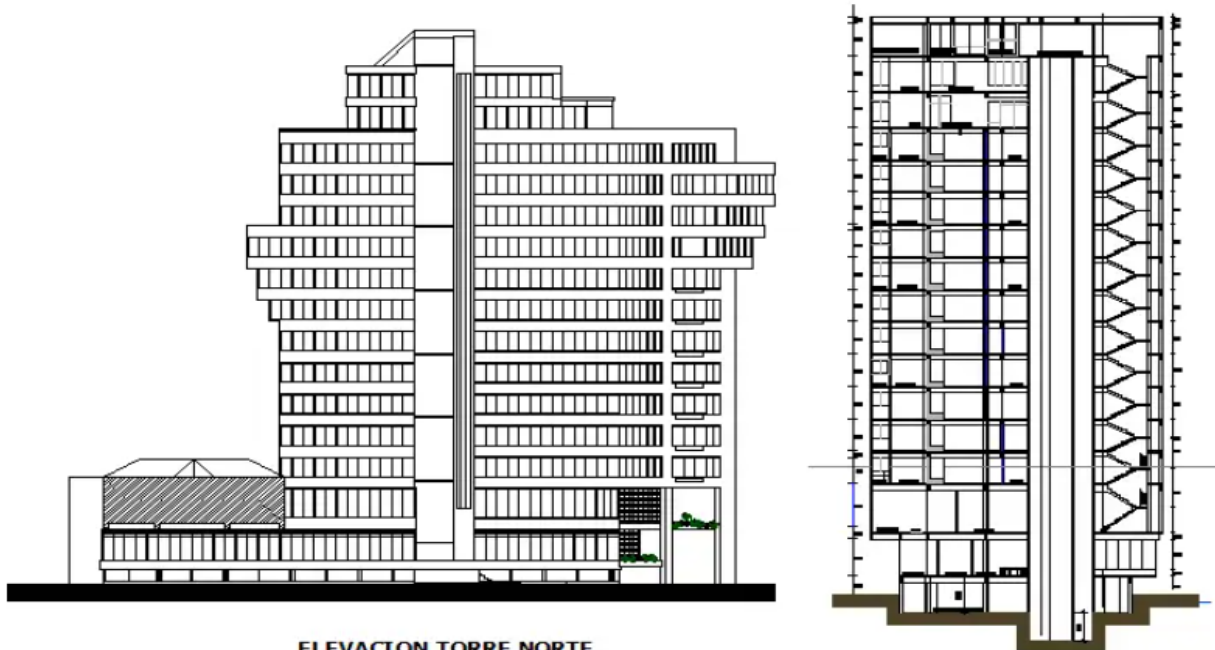
PLAN ELEVATION AND SITE SECTIONS

PLAN



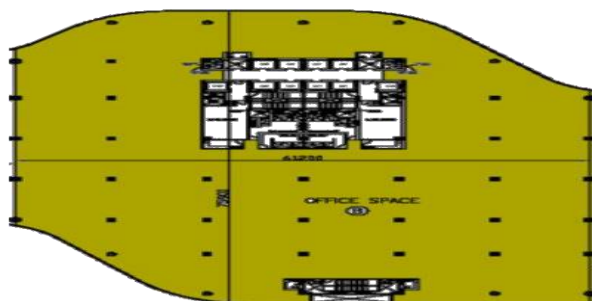
SITE OVERVIEW



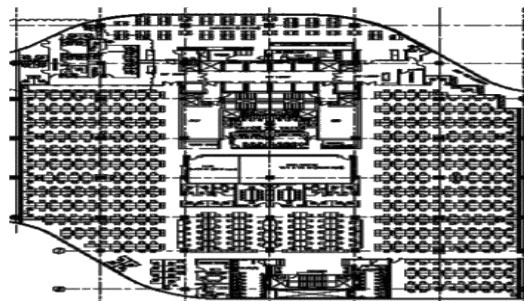


ELEVACION TORRE NORTE

Floor Plan 3rd Floor, Bare Shell & Fitted out @ Tower B



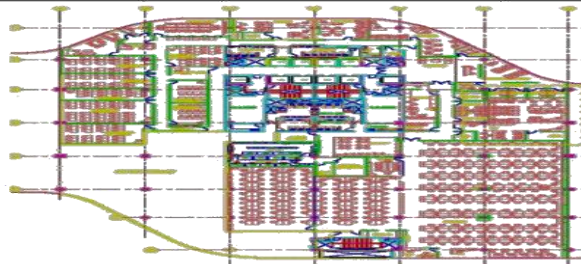
Area: approx. 52,419 sq. ft.
Floor: 3rd Floor, Tower B



Floor Plan 4th Floor, Bare Shell & Fitted out @ Tower B



Area: approx. 41,838 sq. ft.
Floor: 4th Floor, Tower B



CASE STUDY - II

DLF PRIME TOWER

INTRODUCTION



DLF PRIME TOWER

DLF Prime Towers located Okhla Phase 1, New Delhi.

It is being rendered with numerous advantages such as it is comparatively low in price with

LOCATION-NEW DELHI



CLIMATE

The climate of Delhi is an overlap between monsoon-influenced humid subtropical (Köppen climate classification Cwa) and semi-arid (Köppen climate classification BSh), with high variation between summer and winter temperatures and precipitation.

New Delhi - Average temperatures

Month	Jan	Feb	Mar	Apr	May	Jun	Jul	Aug	Sep	Oct	Nov	Dec	Year
Min (°C)	6	10	14	20	26	28	27	26	24	18	11	7	18.1
Max (°C)	21	24	29	36	40	39	35	34	34	34	28	23	31.4
Min (°F)	43	50	57	68	79	82	81	79	75	64	52	45	64.6
Max (°F)	70	75	84	97	104	102	95	93	93	93	82	73	88.6

Rainfall amounts to about 800 millimeters (31.5 inches) per year, but it rains very rarely from October to May. Here is the average precipitation.

New Delhi - Average precipitation

Month	Jan	Feb	Mar	Apr	May	Jun	Jul	Aug	Sep	Oct	Nov	Dec	Year
Prec.(mm)	20	15	10	30	30	55	220	250	135	15	7	15	800
Prec.(in)	0.8	0.6	0.4	1.2	1.2	2.2	8.7	9.8	5.3	0.6	0.3	0.6	31.6
Days	3	2	2	1	1	4	12	11	6	2	0	1	45

The sun in New Delhi often shines in the dry season, while in the rainy season, the sunshine hours decrease a bit, though not as much as in other areas of India. Here are the average sunshine hours per day.

New Delhi - Sunshine

Month	Jan	Feb	Mar	Apr	May	Jun	Jul	Aug	Sep	Oct	Nov	Dec	Year
Hours	7	8	8	9	8	7	5	6	7	9	8	7	2685

FEATURES AND ASSESSIBILITY

Projects Highlights

- 1.The building is air-conditioned and the Possession is in a year's time.
- 2.Built on an expansive 5 acre area
- 3.3 Towers - interconnected with bridge 4.Twin level basement & surface parking
- 5.4 Elevators & 1 service lift in each tower
- 6.Banks/ATM facility in the retail space
- 7.24 hour CCTV security surveillance 8.Suppression systems with sprinklers
- 9.Fire & smoke detectors meeting NBC norms
- 10.100% power backup, Sewerage collection system for complex

Features

Security Features Security Guards
Electronic Security Intercom
Facility Exterior Features
Reserved Parking Servant Quarter
Commercial Features Cafeteria /
Food Court Conference room
ATM
Service / Goods Lift
High Speed Internet / Wi-Fi Other
features
Age of Construction: New
Construction Immediately
Unfurnished

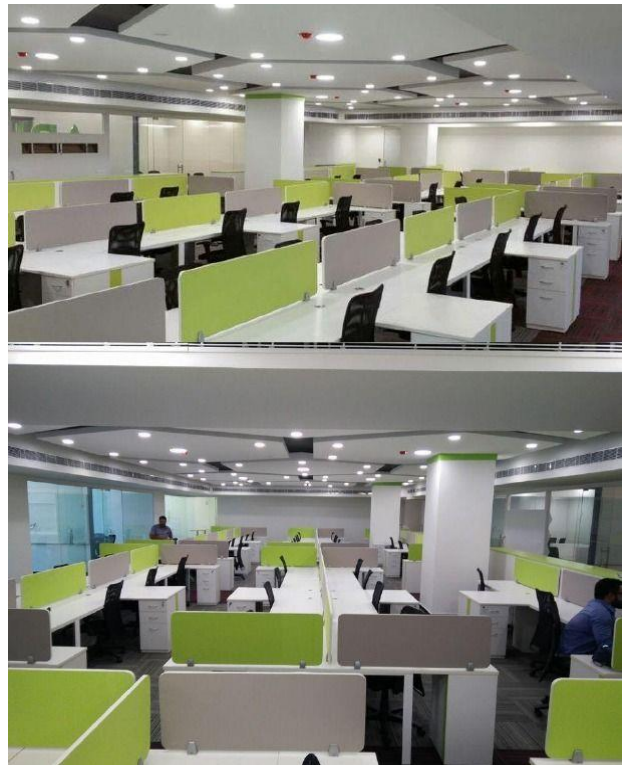
ROAD ASSESSIBILITY

- * Nehru Place: 5 kms
- * Mohan Cooperative: 6 kms
- * Saket: 8 kms
- * ICD Tughlakabad: 3 kms
- * Jasola: 8 kms
- * Noida: 11 kms
- * Faridabad: 5 kms
- * Govindpuri Metro Station: 10 minutes

MATERIALS

Polypropylene is a common plastic used in corporate office furniture because of its dynamic expression of material science that synchronizes every movement while being strong, versatile, and durable. Polymer is another type of plastic material that can be used for indoor corporate office furniture but is also great for furniture used outdoors.

INTERIOR



PLAN



CONCEPT AND **AREA ANALYSIS**

INTRODUCTION

An **office** is a space when an [organization's employees](#) perform [administrative work](#) in order to support and realize objects and [goals](#) of the [organization](#). The word "office" may also denote a position within an organization with specific duties attached to it (see [officer](#), [office-holder](#), [official](#)); the latter is in fact an earlier usage, office as place originally referring to the location of one's duty. When used as an [adjective](#), the term "office" may refer to [business](#)-related tasks

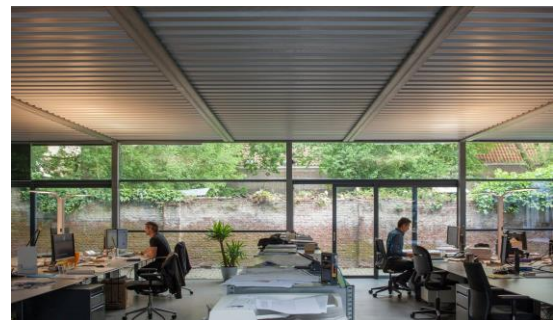
CONCEPT

Another office decor trend that is spreading like wildfire, is an effort to reconnect people with nature by bringing nature to the workspace. This is called a biophilic design. Studies have shown that this design is particularly helpful in improving the health, creativity, concentration, and performance of the employee. Apart from that, in a natural work environment, the psychological health of the employee is effectively enhanced as well as stress and anxiety are reduced.

THIS BIOPHILIC DESIGN IN THE OFFICES CAN BE CREATED WITH THE FOLLOWING ELEMENTS:

NATURAL LIGHTS

We all know that natural lights are healthier than synthetic lights. This is a great source of energy. So to bring sunlight or natural daylight into the workroom, broad glass doors, glass windows, glass walls, glass ceilings, etc. are used.



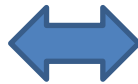
FLOWING WATER

For creating a natural flow of water, fountains, mini-waterfalls are placed in large offices. Flowing water brings a sense of calmness and reduces work-related stress.



BROAD NATURAL VIEW

Offices with broad glass-windows can enable a spectacular view of the natural landscape. If the installation of bigger windows is not possible, the paintings or pictures of nature can also be displayed throughout the offices to bring a natural essence to the office. Indoor gardens with plants, rocks, water, wooden bridge, etc. can also be crafted in the common areas to bring a feeling of nature amid the busy workdays.

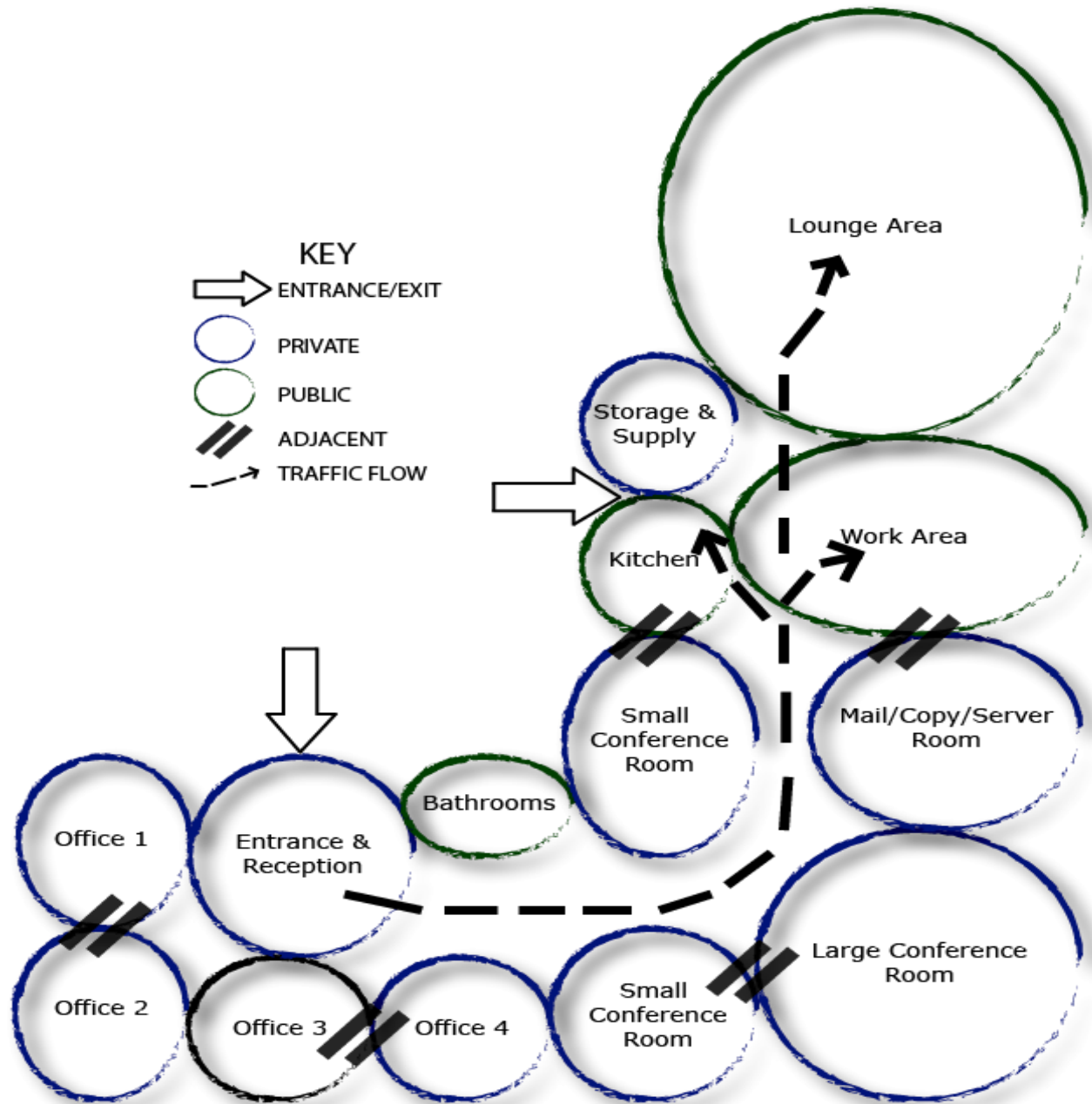


INDOOR PLANTS

Indoor plants at the office areas help to purify the air and improve human health and power to concentrate on the work.



BUBBLE DIAGRAM



PLAN



FRAME INTERIOR SPACE REQUIREMENT

S.NO	REQUIREMENT	NO.OF UNITS	OCCUPANCY
1	RECEPTION	1	
2	WAITING ROOM	1	20
3	TRAINING ROOM	2	40
4	CONFERENCE ROOM	1	12
5	WORK STATION	2	
6	CANTEEN	1	35
7	PHONEBOOTH	4	4
8	MEETING ROOM	4PERSON-1 6PERSON-1	10
9	DIRECTOR CABIN	1	
10	VENDOR SHOP	2	
11	RECREATION AREA	1	
12	CRECHE	1	
13	INTERVIEW ROOM	1	4
14	LIBRARY	1	35
15	HUDDLE ZONE	2	
16	STORE ROOM	2	
17	SERVER ROOM	1	
18	PARKING	1	500
19	BOARD ROOM	12	120

INTERIOR VIEWS WITH MATERIAL NAME

WORKING SPACES



CEILING MATERIALS=GRID CEILING TUFFEN GLASS FRAMING



INTERVIEW ROOM



CERAMICS FLOORING

RECEPTION AREA



GYPSUM CEILING AND LAMINATED FURNITURE



GYPSUM CEILING

SERVER ROOM / SECURITY ROOM



GYPSUM CEILING

CABIN



CUBES SPOTLIGHT & GYPSUM CEILING



GYPSUM CEILING

WAITING AREA



LED STRIPS LIGHTS

VENDOR SHOP



FALSE CEILING



WAFFLA CELING

MEETING ROOM / CONFERENCE ROOM



WAFFLA CEILING

MATERIALS MOOD BOARD

MATERIAL USED FOR CEILING



GRID CEILING



GYPSUM CEILING



FALL CEILING

MATERIAL USED FOR FLOORING



CEREMICS FLOORING



VERTIFIED FLOORING



VINYL FLOORING

MATERIAL USED FOR WALL



WOODEN PATTERN



WALLPAPER



WOODEN PANEL

TYPES OF LIGHT

FLAT PANEL LED LIGHT



- Rectangular: [\(1x4\) LED flat panel](#)
- Rectangular: [\(2x4\) LED flat panel](#)
- Square: [\(2x2\) LED flat panel](#)



RECESSED LIGHTING FIXTURE

MATERIAL USED FOR FURNITURE

POLYPROPYLENE & POLYMER PLASTIC



CARDBOARD PLASTIC SHEETS

MESH UPHOLSTREY & FELT



[Mesh Net Fabric](#)

HIGH PRESSURE LAMINATE



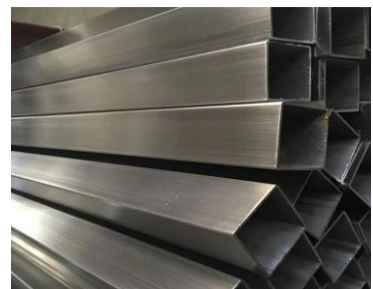
HIGH PRESSURE LAMINATE

WOOD



TIMBER WOOD

METAL



STAINLESS STEEL SQUARE TUBE

INDOOR PLANTS AND THEIR BENEFITS

CACTI

If you're a plant novice, pick up a cactus. These plants thrive in natural light and only have to be watered once a week during the spring and summer, and every three weeks during the fall and winter.



ZZ PLANT

While ZZs thrive in moderate to brighter light environments, they'll still hold up just fine in low light. They also require little water, like a cactus, so you don't have to worry about watering them all the time. Plus, it's a hardy plant. If its leaves start falling off, just give it a good watering. It'll bounce right back!



SUCCULENTS

These waxy plants actually store water in their thick leaves. Therefore, they typically only require weekly waterings and enjoy sunlight and dry air.



AIR PLANT

These spidery guys don't even need soil to survive. All you have to do to water them is dunk them in water for two or three hours every 10 days—a perfect activity while you labor the afternoon away crunching numbers.



SPIDER PLANT

Since these plants prefer to dry out [between waterings](#), you can usually go a few days between sessions. They also like indirect light, so they'll flourish even if you have a dark, windowless office (the actual worst!).



BAMBOO

This "lucky" plant needs very [little light](#), meaning it's basically made for cube desks. Even better? It'll give your workspace a much-needed [Feng Shui](#) boost.



POTHOS

Also known as Devil's Ivy, this sprawling plant is incredibly easy to take care of. It can tolerate the darkest cubicles and the brightest, window-filled offices with ease, and will still survive when you forgot to water it every once in a while. Look for cues on what kind of care it needs—yellow leaves mean it's been overwatered, while a droopy plant is thirsty



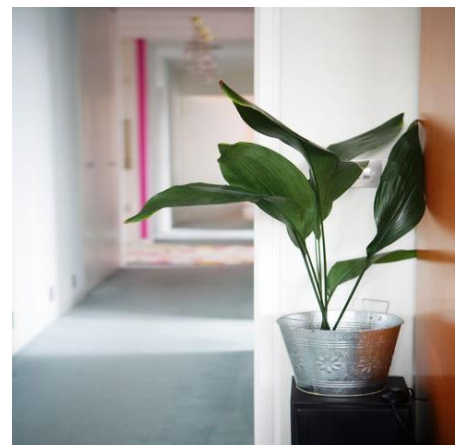
SNAKE PLANTS

Since these [vertical plants](#) can survive low light levels *and* drought, they're basically designed for the kind of office life where you can't find 10 minutes to eat your lunch—let alone water your plants.



PEACE LILY

These beautiful flowering plants are surprisingly easy to grow. Just keep the soil moist (but avoid overwatering!), and mist its leaves regularly. Oh, and while they prefer some light, make sure you keep them out of direct sunlight.



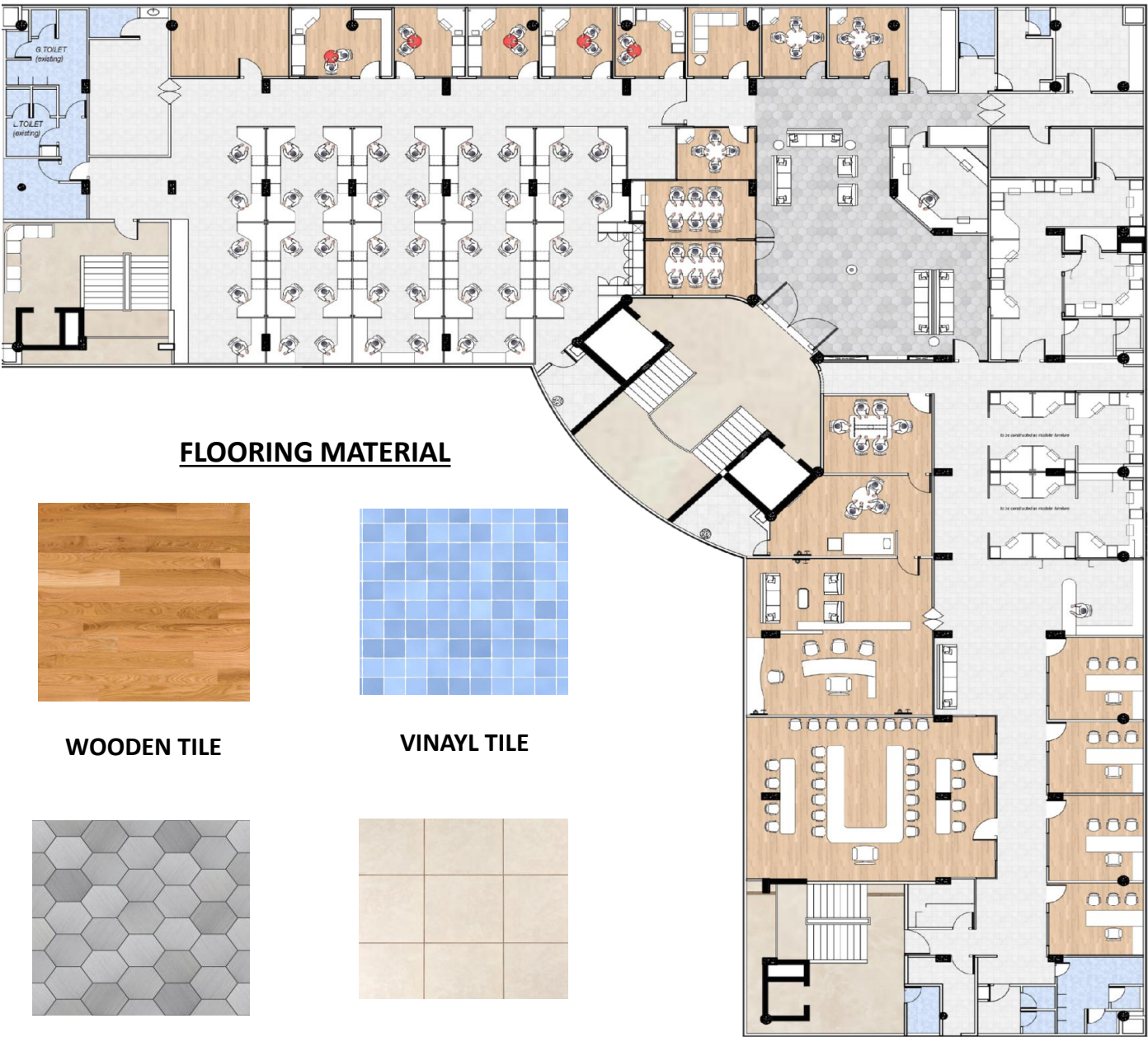
SITE PLAN –FLOOR
PLAN- SECTION-
ELEVATION-ELECTIVE

AREA ANYALISIS

AREA	SIZE
DINNING + KITCHEN	7000X3400
STAFF TOILET	6500X3400
ELECTRIC ROOM	2800X3500
DRIVERS SITTING	5600X3100
RECORD 1 ST ROOM	6200X3200
EXISTING CABIN	3000X3300
EXISTING DISCUSSION R.	3300X2700
EXISTING V.I.P. SITTING	3000X3200
PANTRY 1 ST	2000X4000
VISITER TOILET	3900X3800
SERVIER (EXISTING)	3600X4000
PHOTOCOPY PRINTER	2400X2000
DISCUSSION 1 ST ROOM	2400X3200
DISCUSSION 2 ND ROOM	2700X4600
RECIPTION	4000X5000
RECORD 2 ND ROOM	4300X2200
RECORD 3 RD ROOM	2000X2200
ACCOUNT ROOM	6500X8200
C S.	6500X3200
C A.	6500X3200
P S.	3400X3400
CHAIRMAN ROOM	7800X7300
RECORD 4 TH ROOM	2800X2500
ENTRANCE	5000
RETIRING ROOM	7000X4000
PRIVATE MEETING ROOM	3600X4500
CONFRANCE ROOM\LIBRARY	10.000X7600
RECORD 5 TH ROOM	2700X2200
PANTRY 2 ND	3500X2000
SERVANT DRIVERS TOILET	1200X2100
STAFF TOILET 2 ND	7000X3500
SOCEITY OFFICE	4000X3300
MEETING\CASH ROOM	4000X4000
FUTURE DIRECTOR	4000X3400
DIRECTOR ROOM	4000X4000

MATERIAL	PLACE
CERAMIL TILES+ WOODEN	FLOORING
POP , ACOUSTIC PANNELS	FALSE CEILLING
WOOD + VINER+DECO	CABIN PARTITION
PUTTY+ PAINT	WALLS
MIRROR	DOORS, WINDOW
WOODEN PANNELING	WALLS
FOAM + WOODEN FRAME+ VINER + FOAM+ VELVET	SOFA
LEDS + SPOT LIGHTS+ TUBE LIGHTS	ELECTRICAL FITTINGS
WOOD+VINER+ DECO	CABINETS

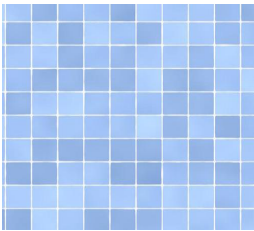
PRESENTATION PLAN



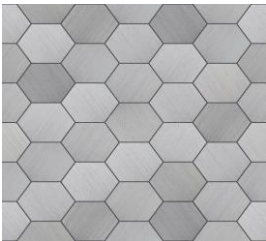
FLOORING MATERIAL



WOODEN TILE



VINAYL TILE



VIRTIFIED TILE



CEREMIC TILE

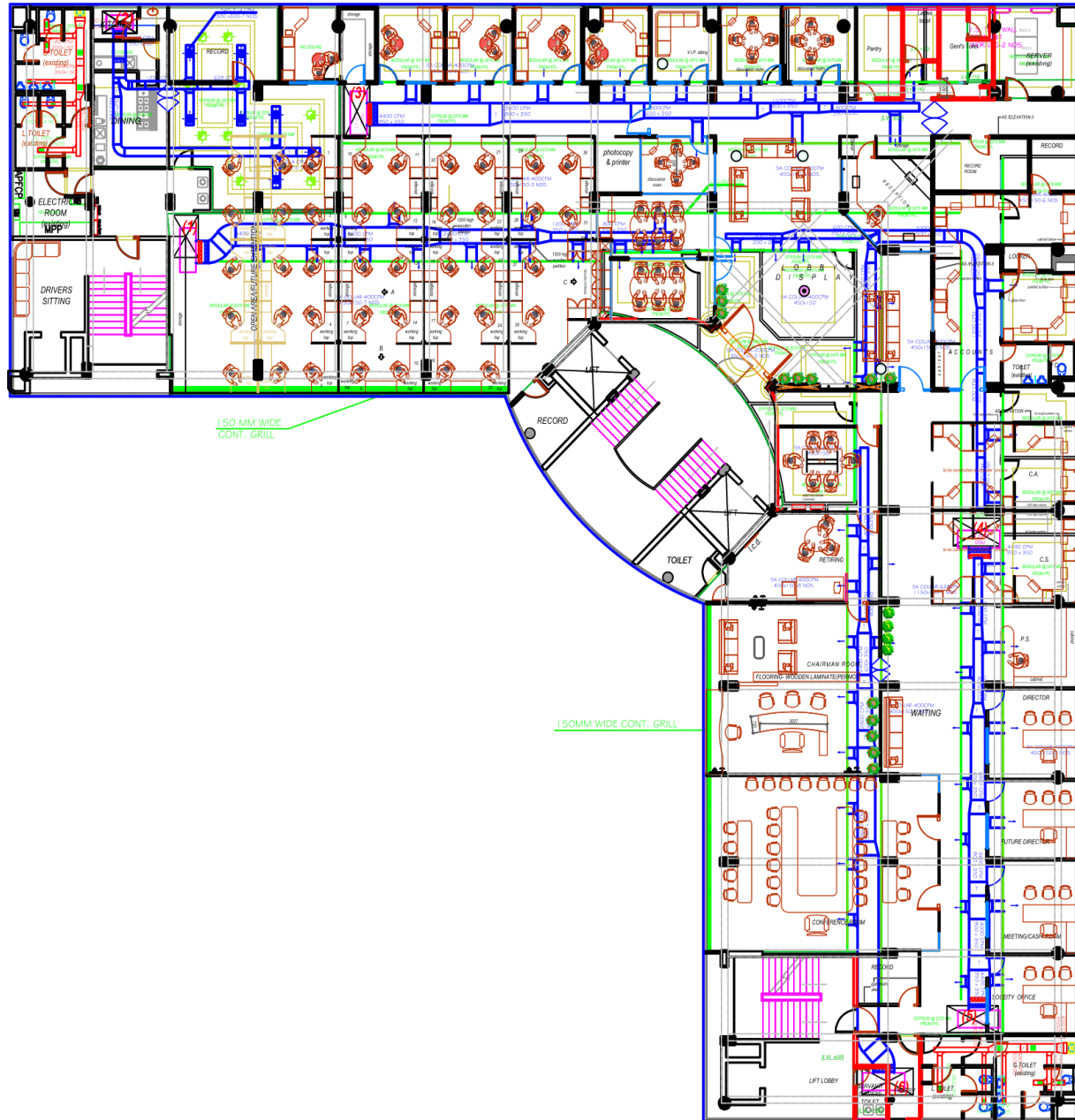
FURNITURE PLAN



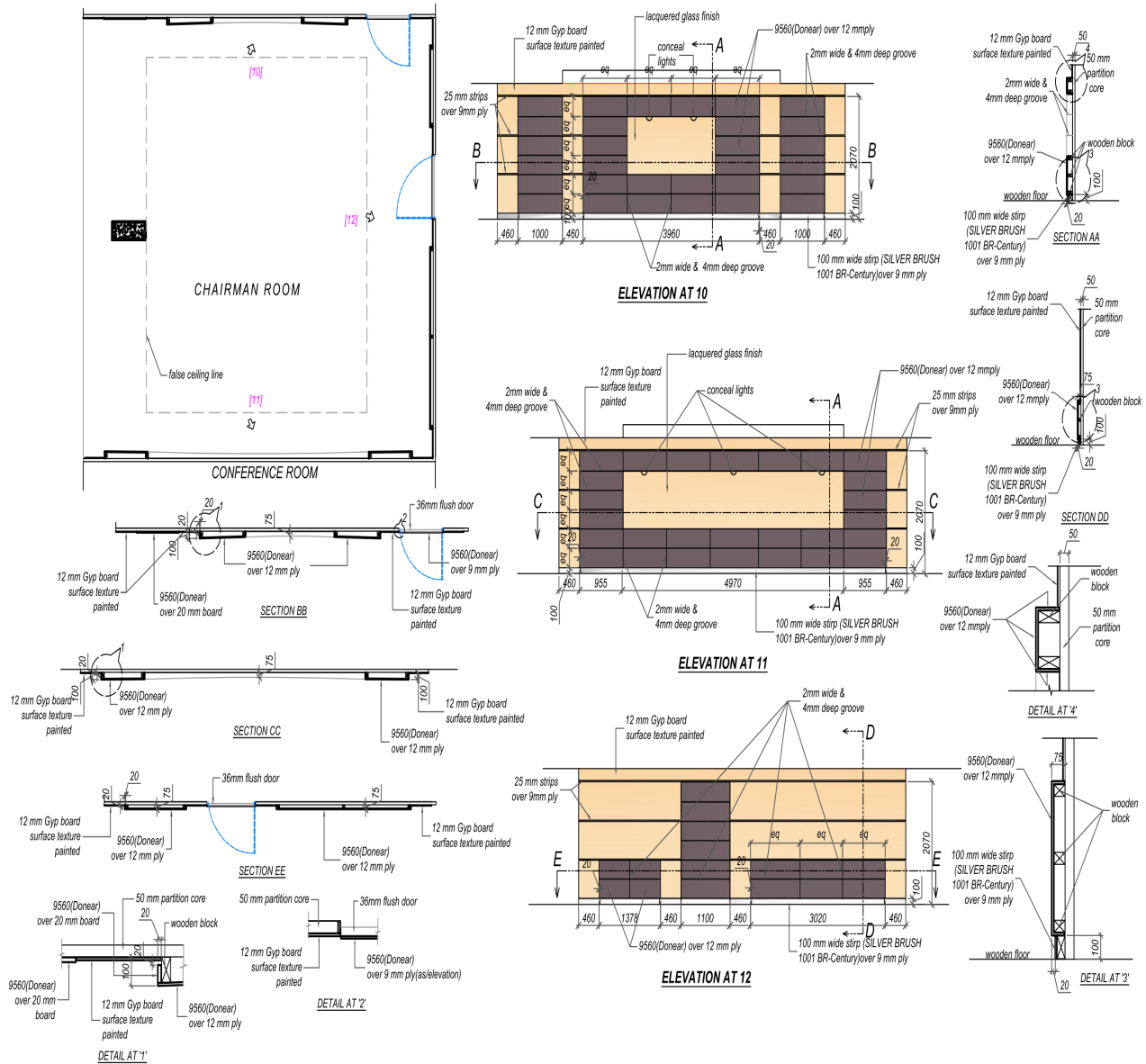
ELECTRIC PLAN



DUCTING PLAN

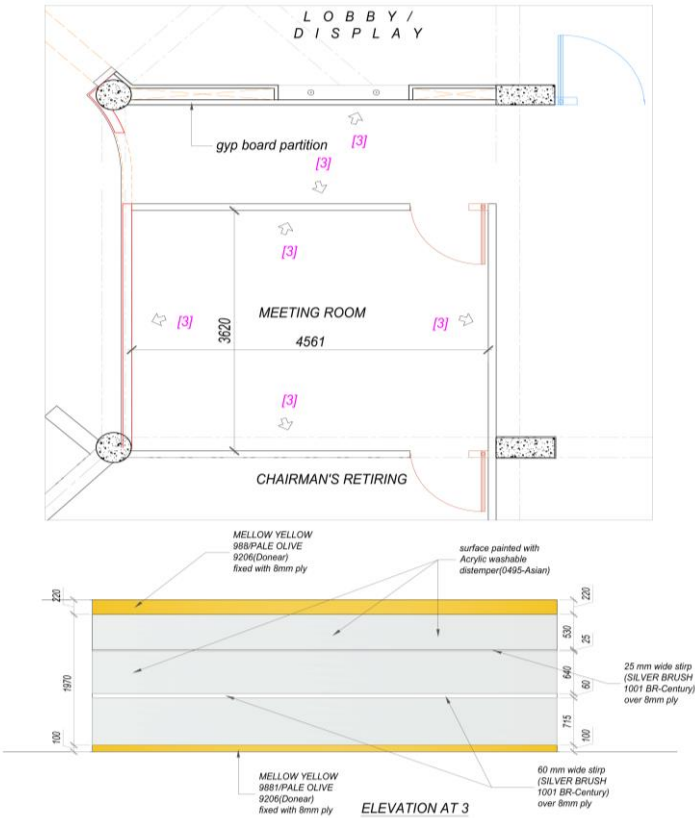


CONFERENCE ROOM





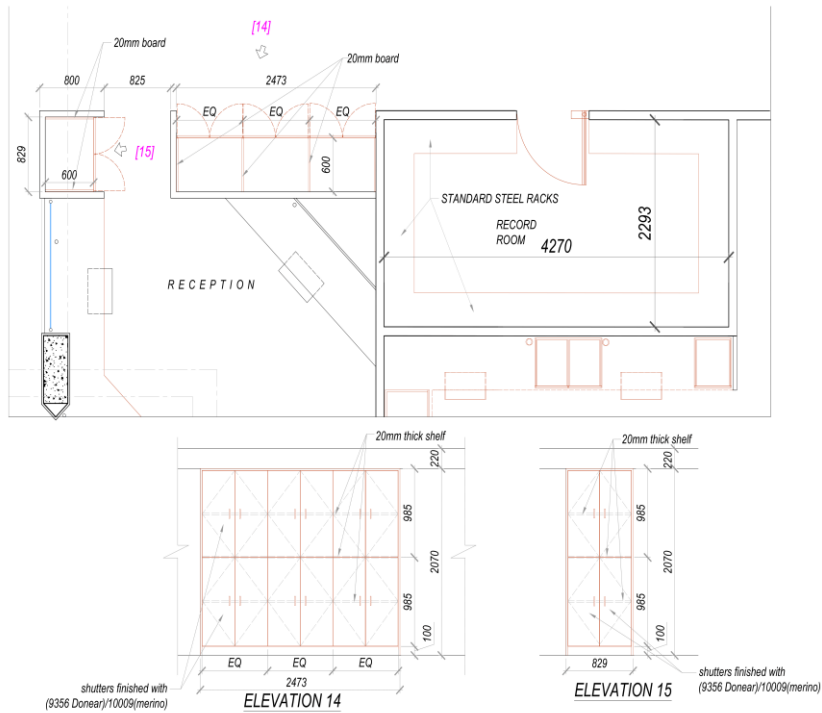
MEETING ROOM



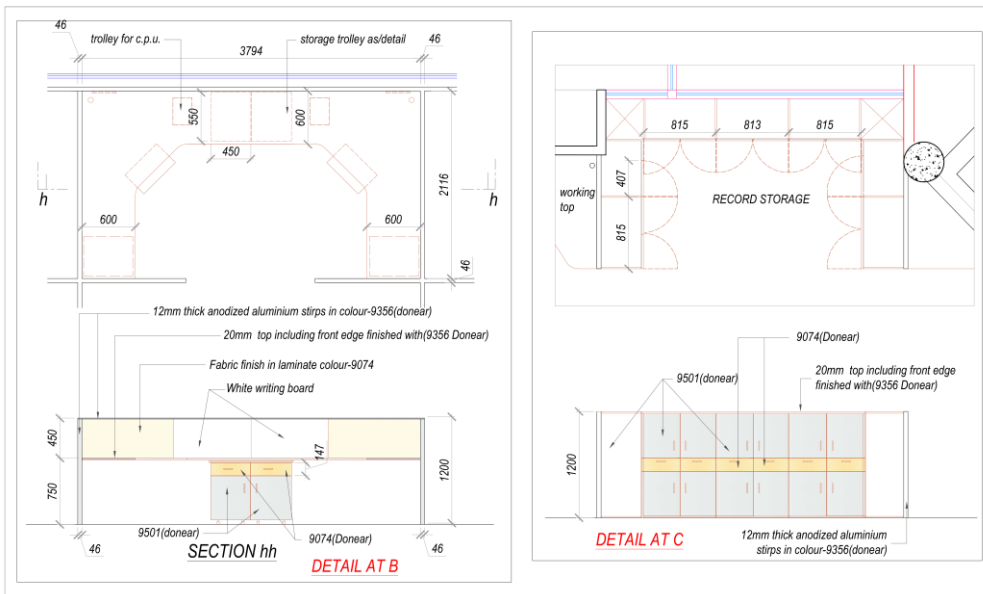
TOILET



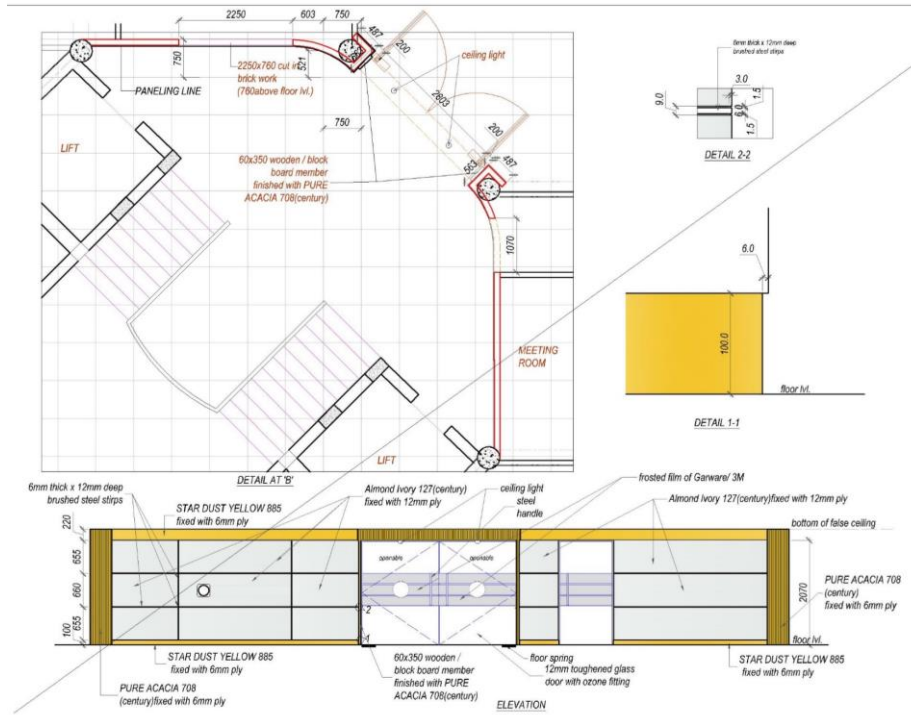
RECEPTION AREA



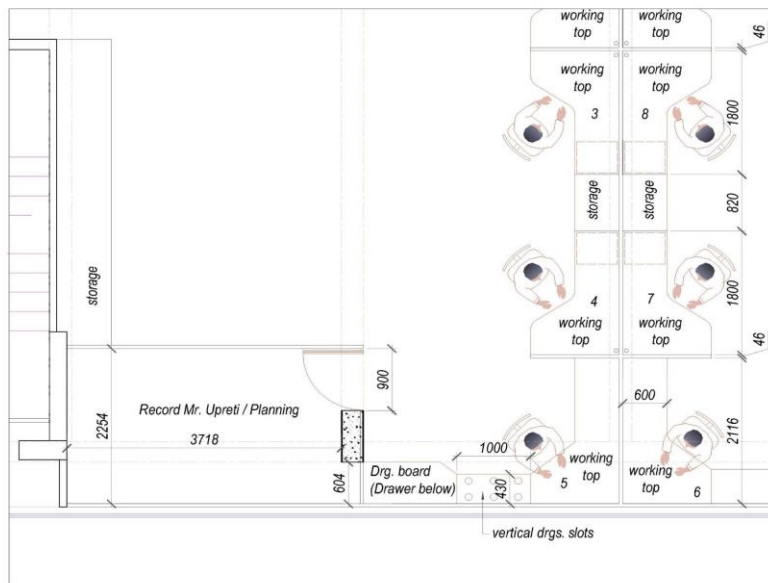
WORKING TABLE



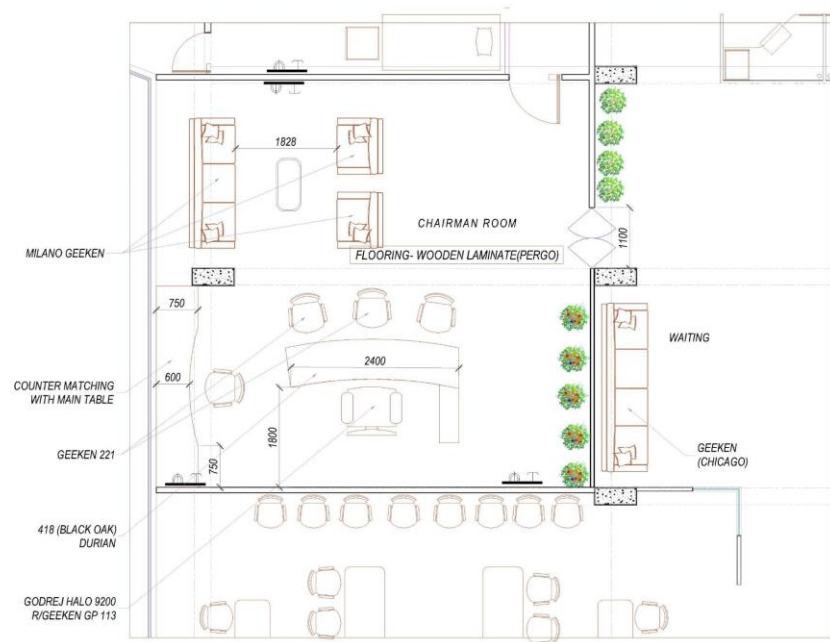
ENTRANCE DETAIL



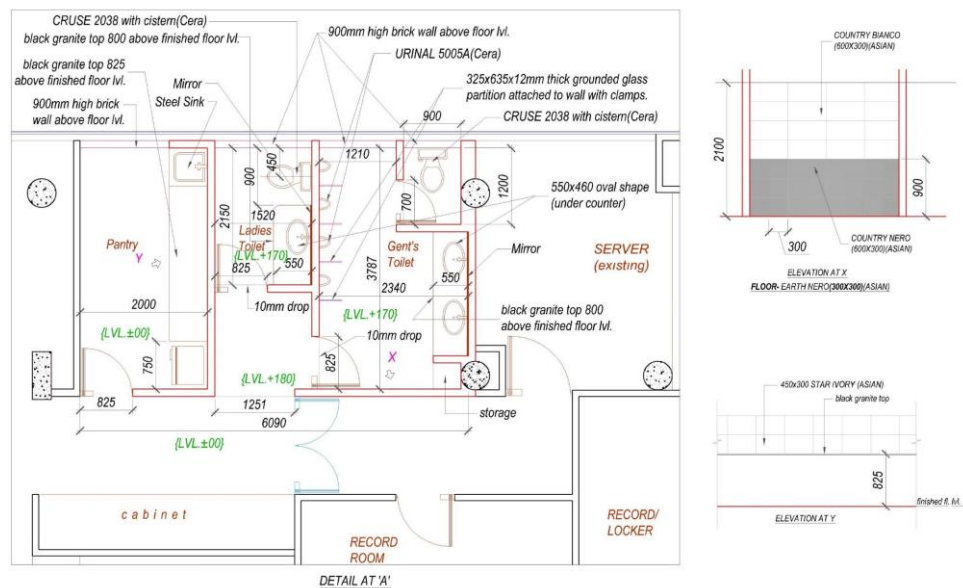
WORKING TABLE DETAIL



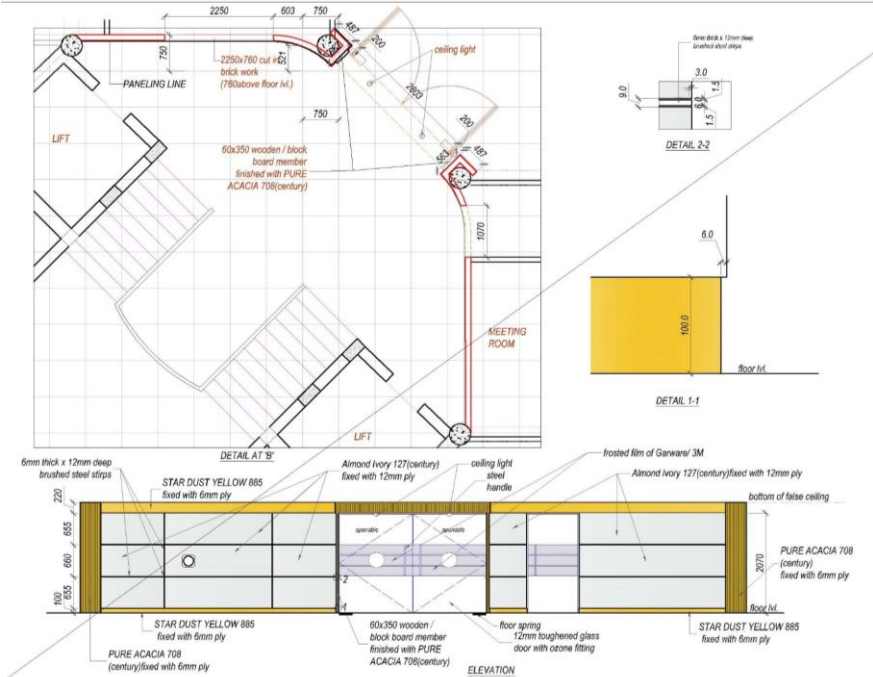
FURNITURE LAYOUT OF CHAIRMAN ROOM



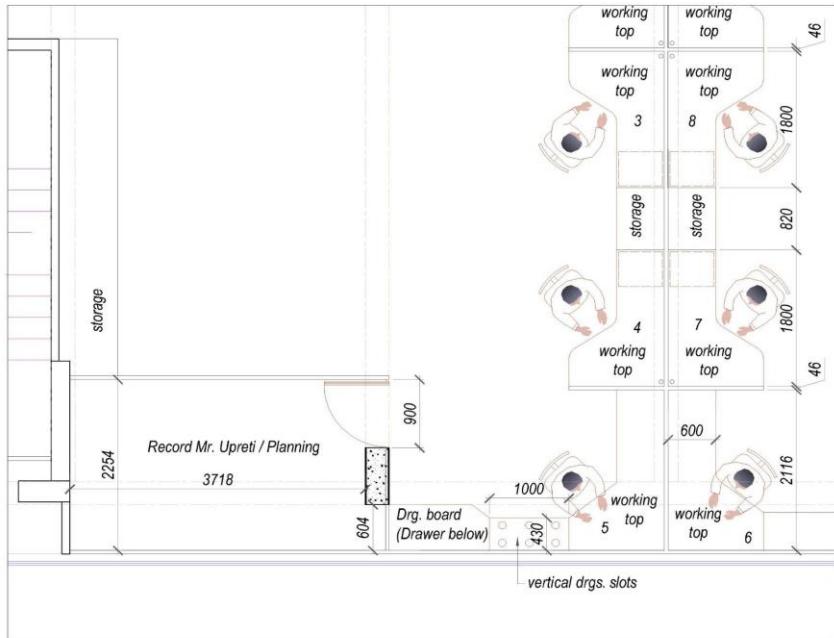
TOILET DETAIL



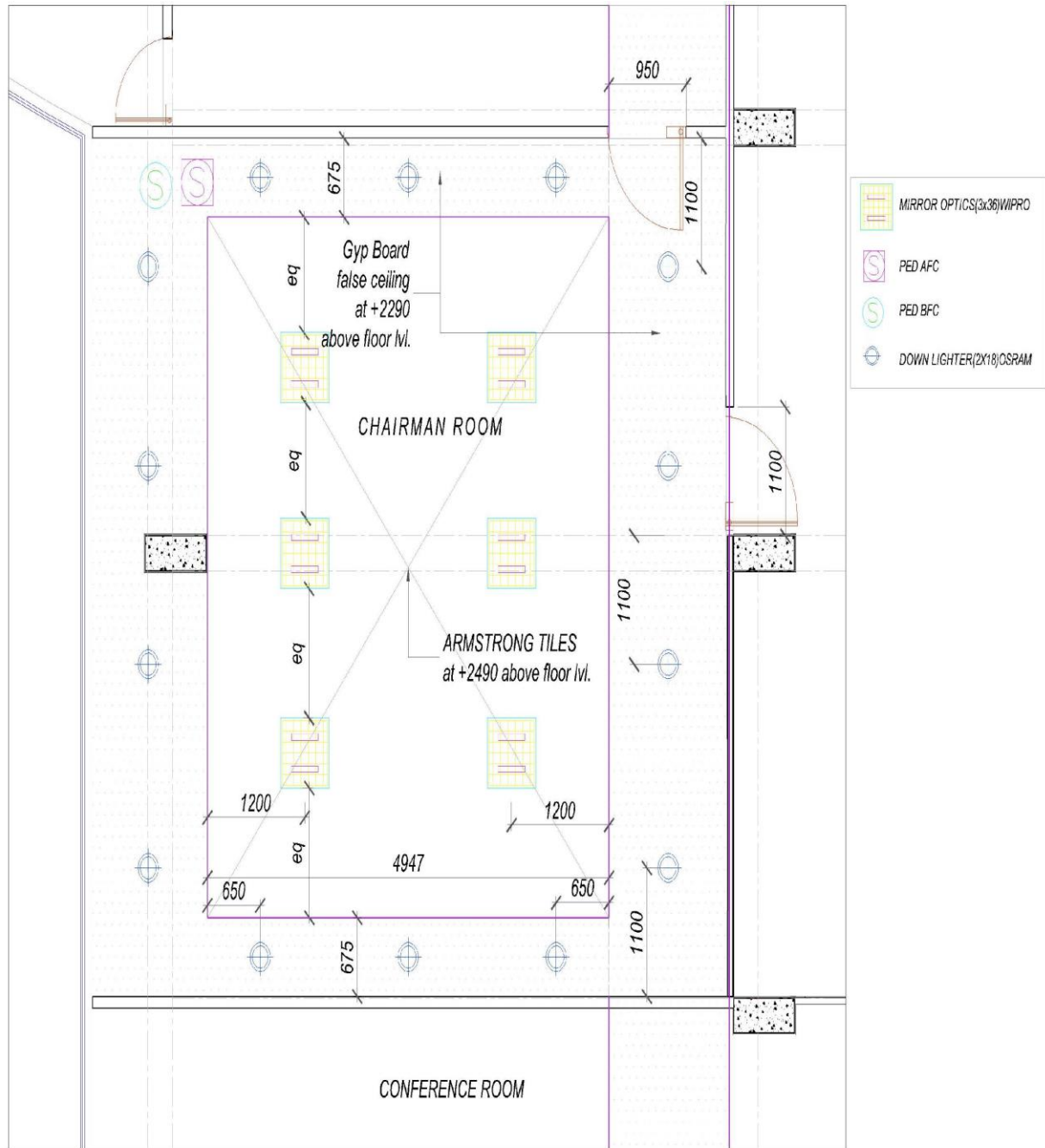
ENTRANCE DETAIL



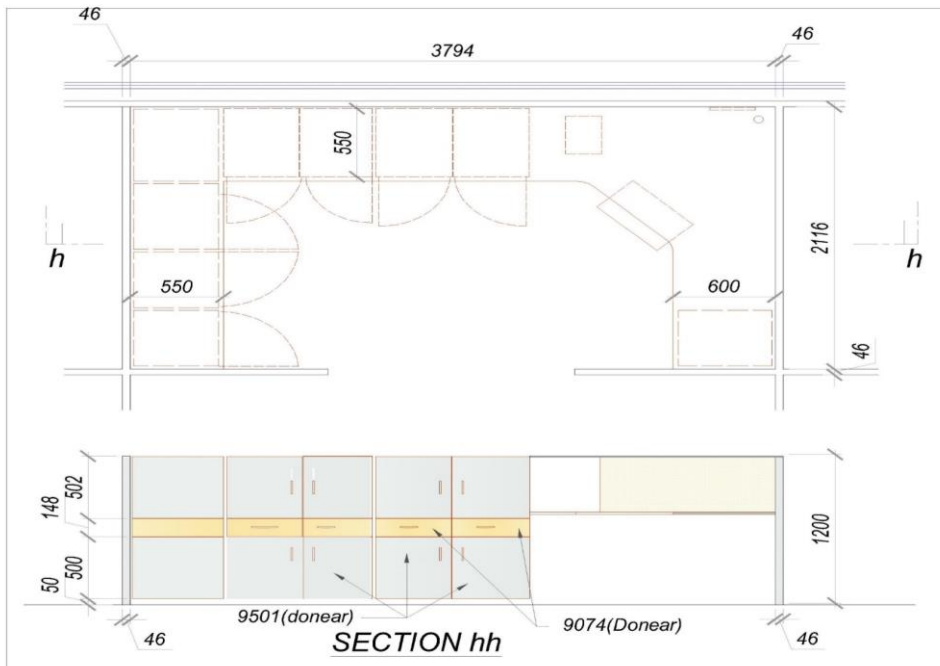
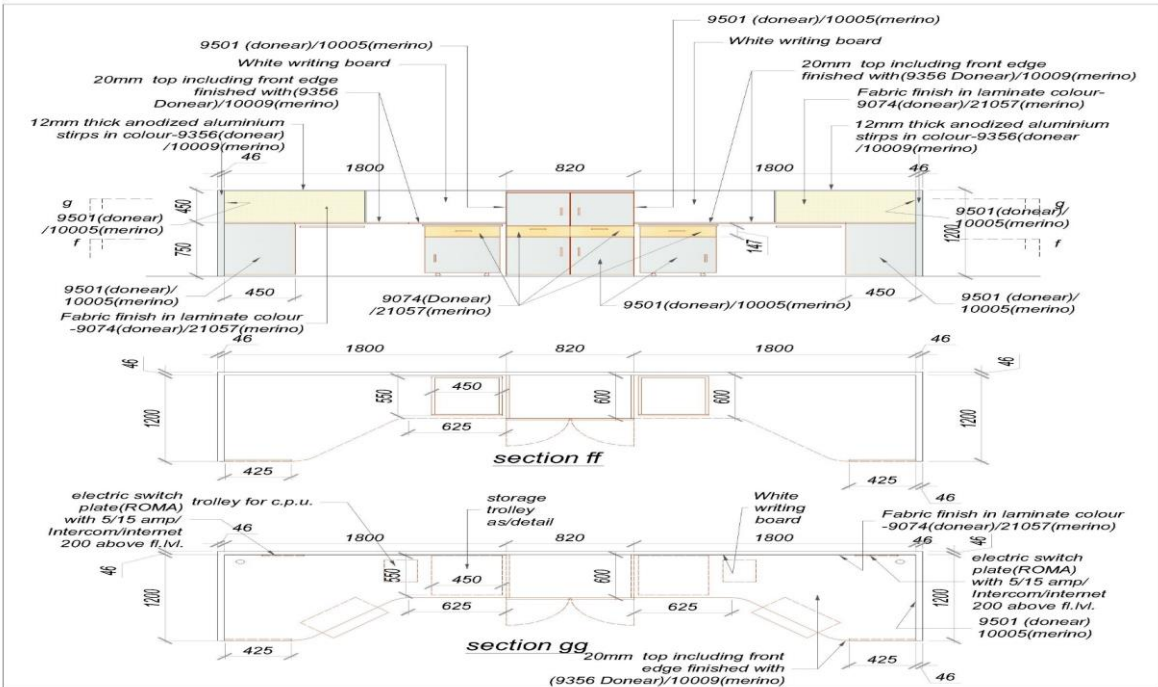
WORKING TABLE DETAIL



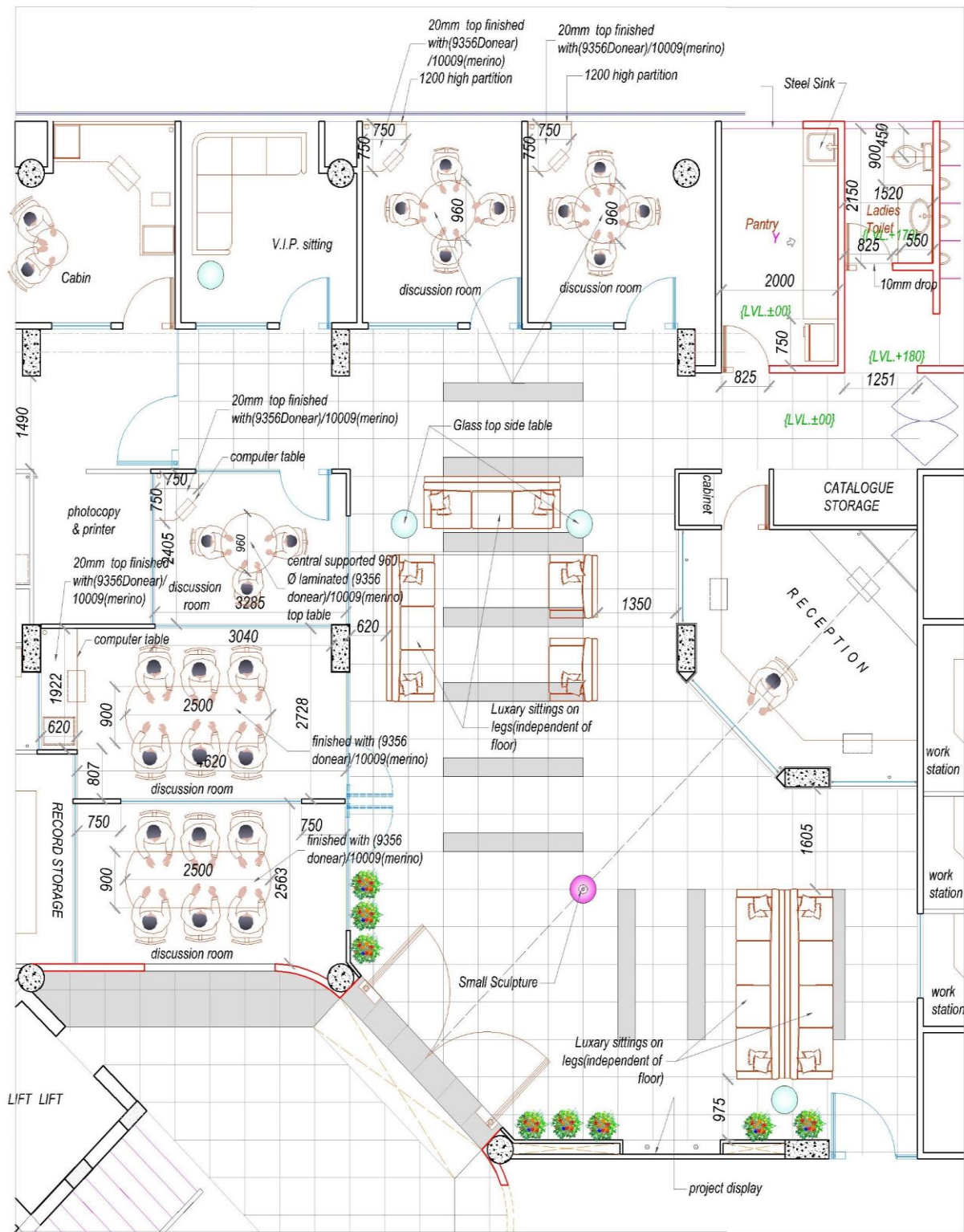
FALL CEILING DETAIL OF CHAIRMAN ROOM



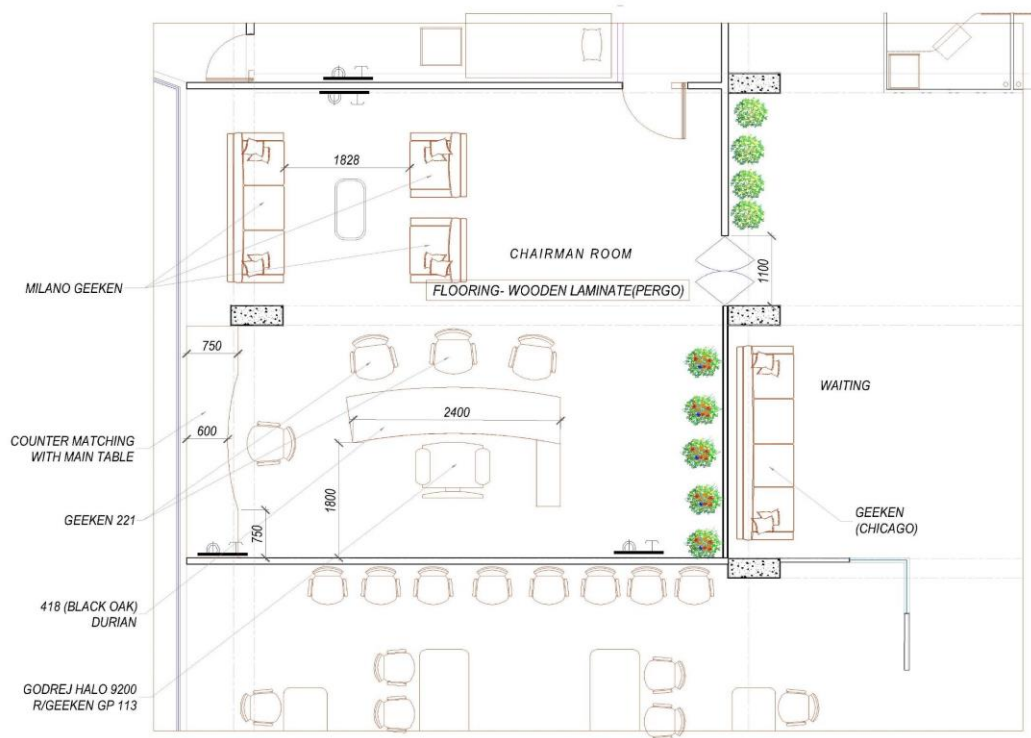
DETAIL OF WORKING TABEL



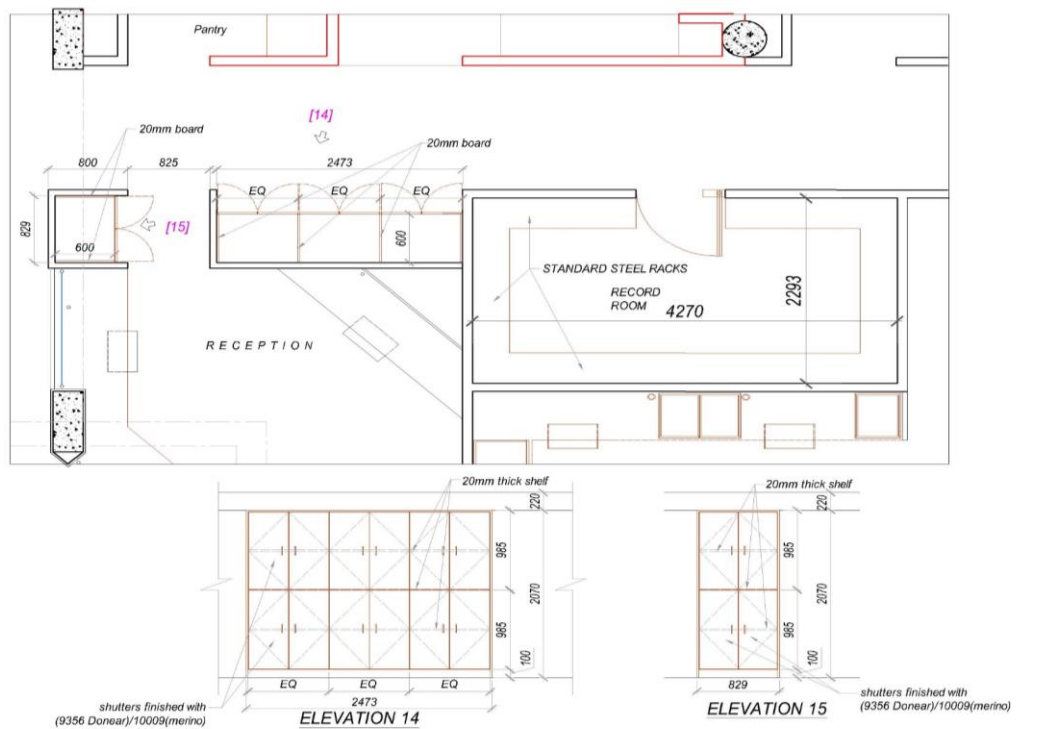
FURNITURE LAYOUT OF ENTRANCE



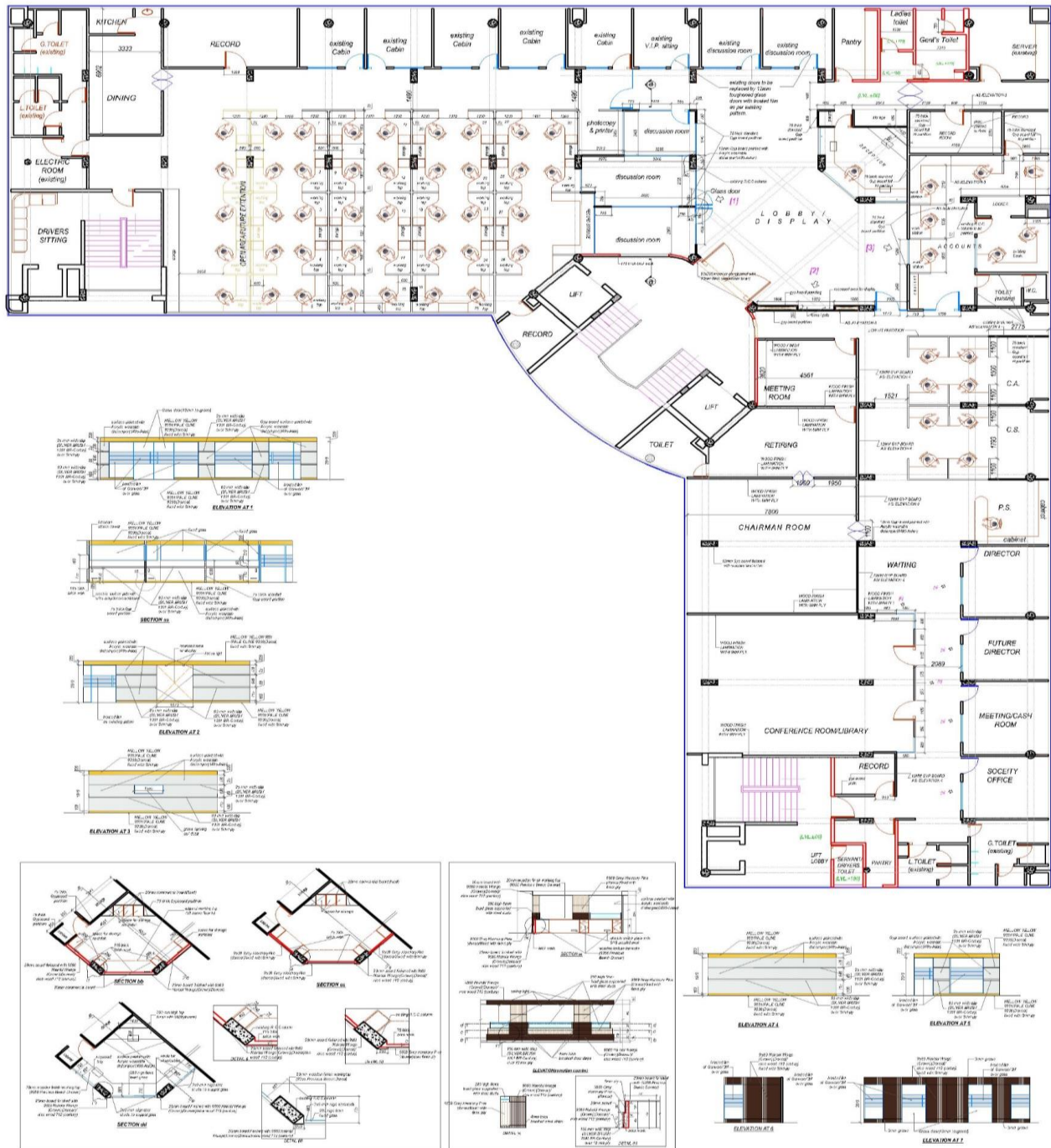
FURNITURE LAYOUT OF CHAIRMAIN ROOM



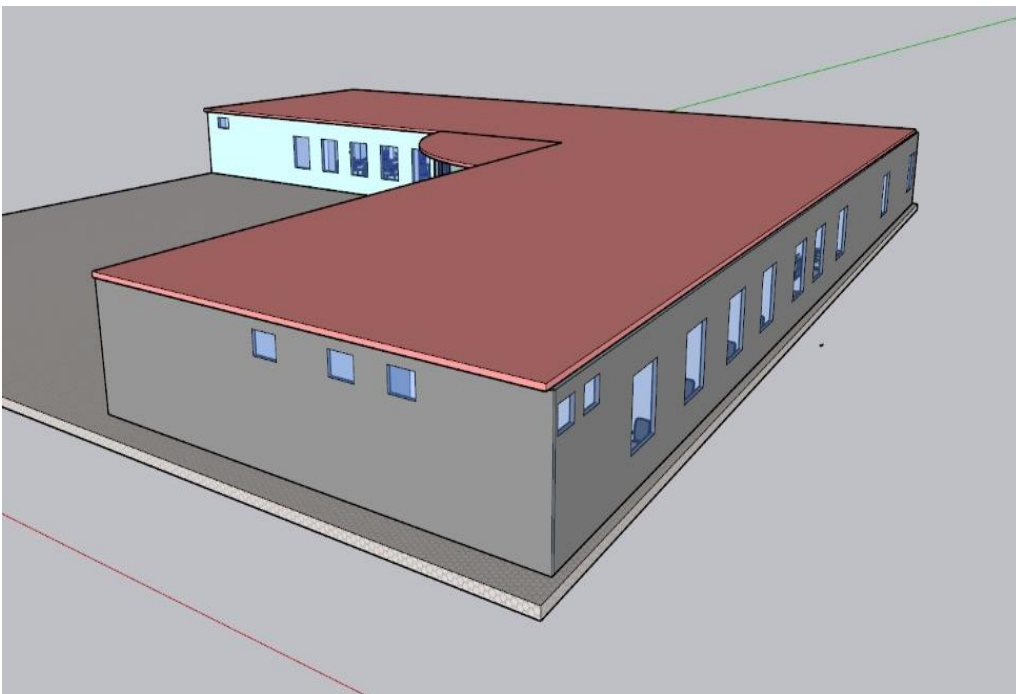
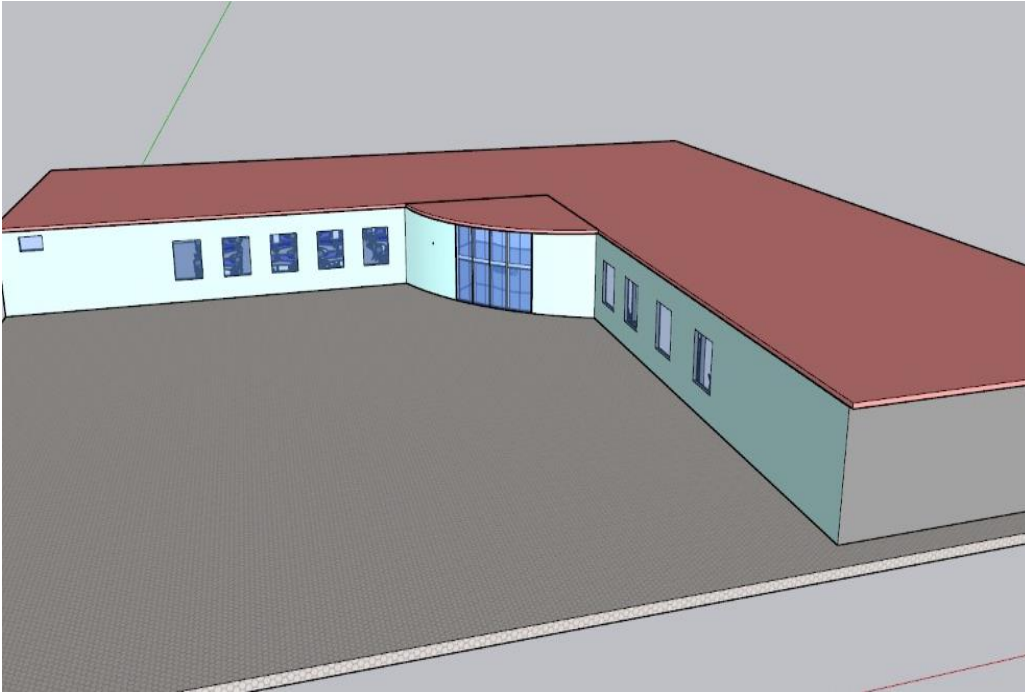
CABINET DETAIL

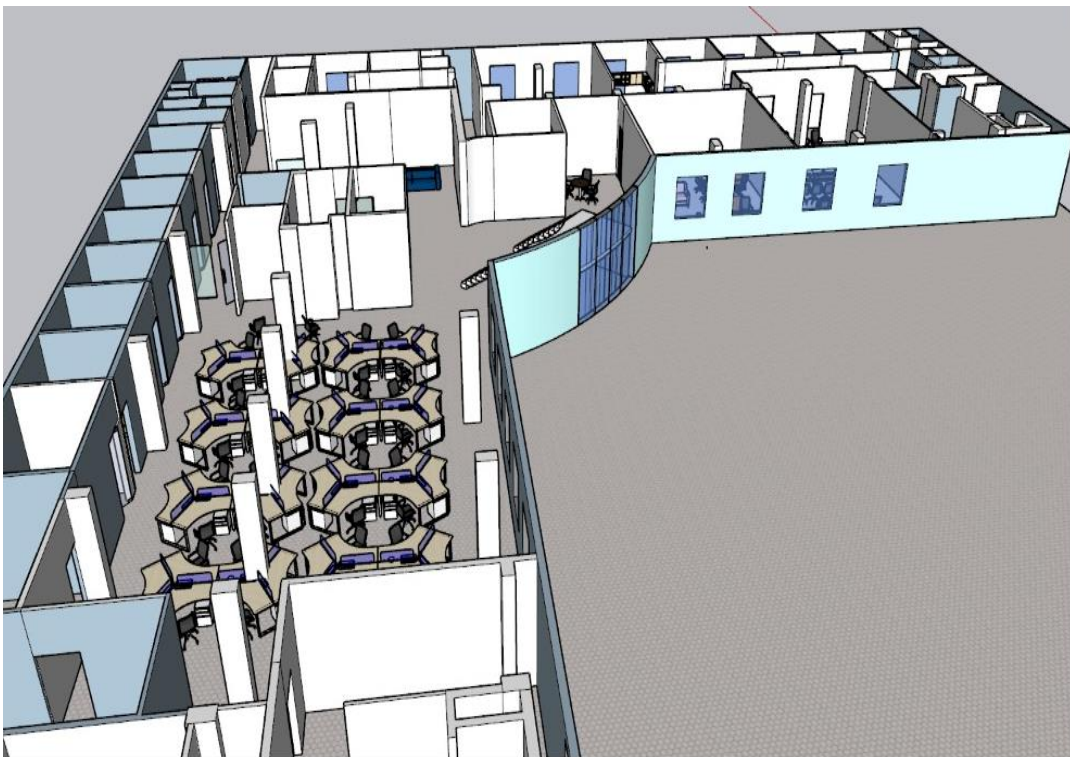


WORKING DRAWING

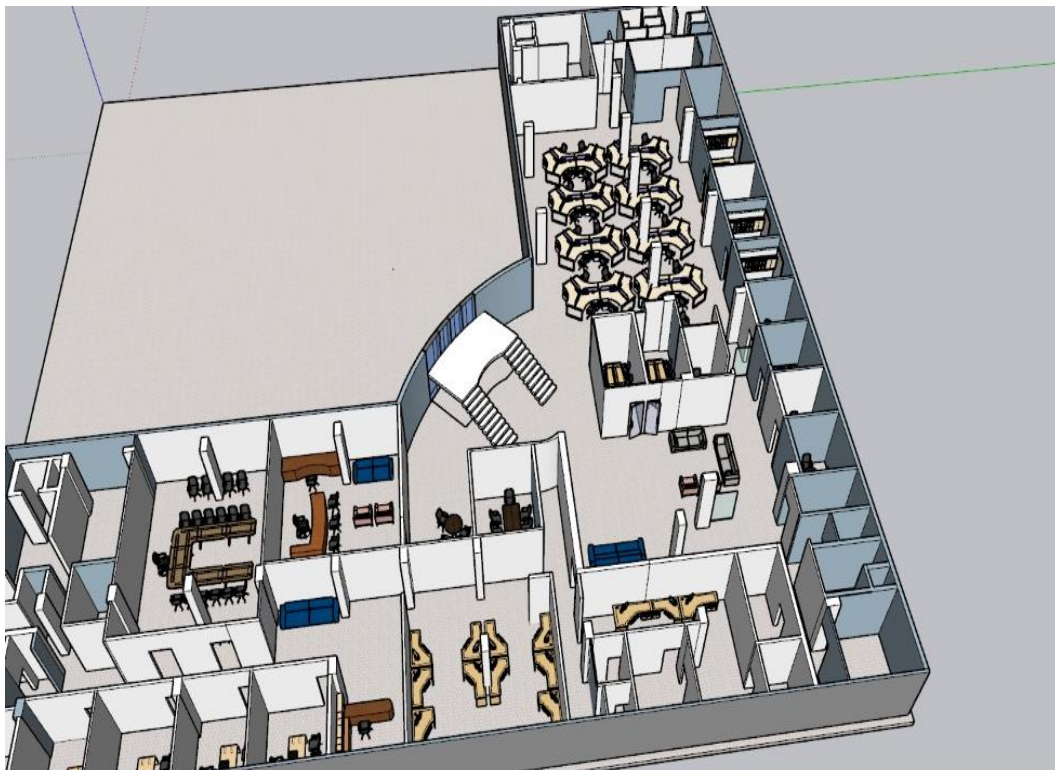


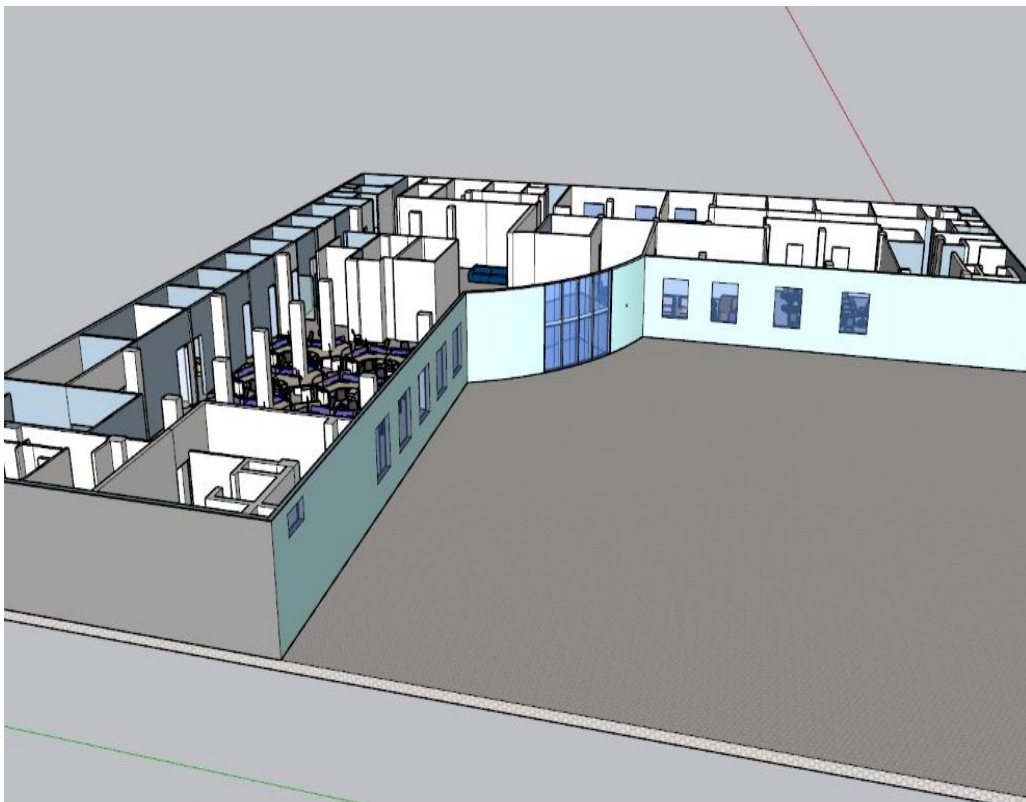
3D VIEWS

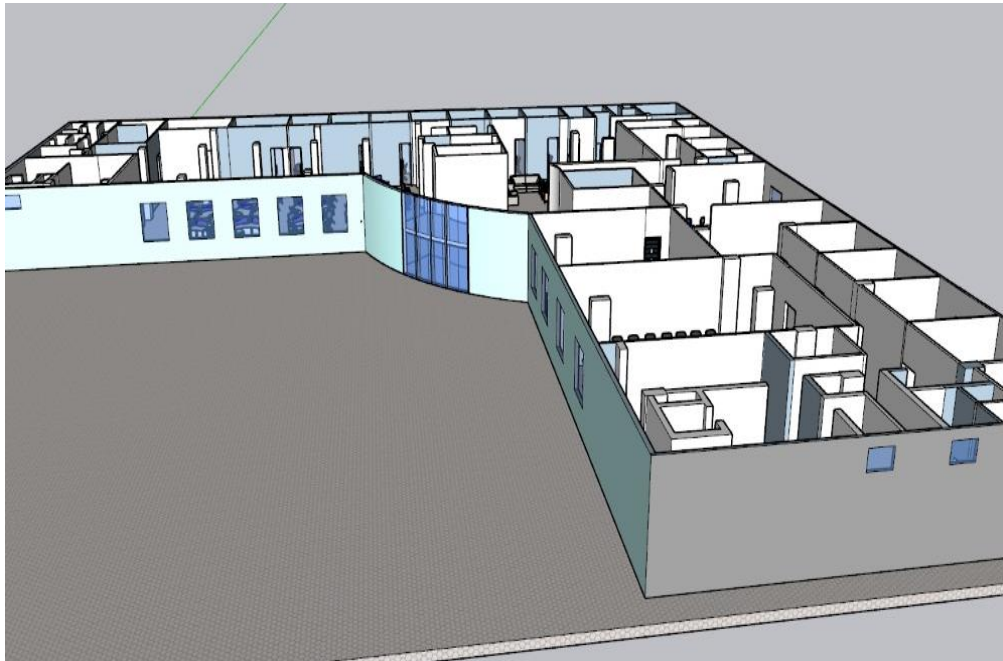












3D RENDER



CORPORATE OFFICE



CORPORATE OFFICE



CORPORATE OFFICE



CORPORATE OFFICE



CORPORATE OFFICE